

# IK-4K

UltraHD 4K video camera  
3840 x 2160 / 1080p

World's smallest  
3-chip UltraHD  
video camera

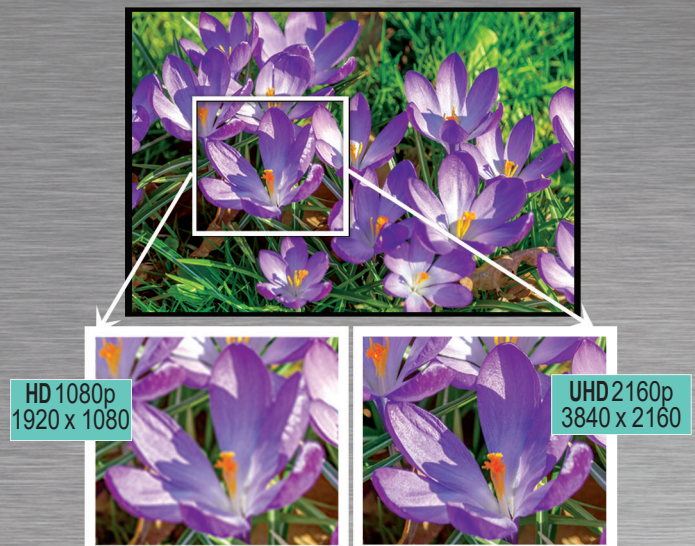


Canon Europe N.V. introduces the world's smallest 3-chip UltraHD 4K video camera providing 8Mp 3840 x 2160 output and showing extraordinary detail with up to 1600 TV lines of resolution. Video output is switchable between 4K, 1080p and 1080i formats to configure to any HD display and application.

## Features

- 3840 x 2160 50/59.94 Hz UltraHD 4K output
- Switchable formats; 4K, 1080p and 1080i
- Amazing details up to 1600 TV lines resolution
- Ultra-compact two piece design
- 4x 3G/HD-SDI output for maximum signal fidelity
- 12-channel color adjustment to achieve exceptional color accuracy and control
- 5 User-configurable settings files to support different operating modes and conditions
- Image flip and mirror
- Freeze frame
- Gen-lock for 3D and multi-camera use
- Remote control via RS232
- C-mount lens mount

With world-class innovation, the IK-4K camera incorporates the latest in CMOS sensors, proprietary prism technology and advanced image processing to provide unprecedented color accuracy, incredible resolution, and the world's smallest 3-chip package.



UltraHD 3840 x 2160 format provides 4x the pixel data of 1080p, resulting in incredibly sharp details and higher resolution.

(Simulated images are for illustration purposes only.)



# Canon



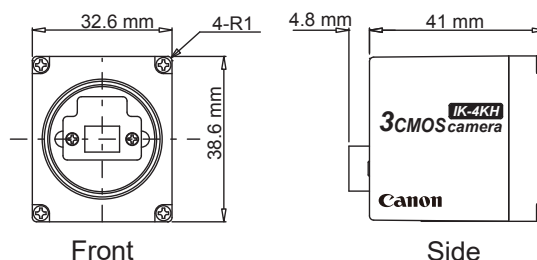
# IK-4K

## Camera Head Specifications

### IK-4KH

Image Sensor	3-CMOS, 1/2.9", progressive
Output Matrix	Horizontal: 3840, Vertical: 2160 UHD 4K mode Horizontal: 1920, Vertical: 1080 HD 1080p/1080i
Output Resolution H/V	1600 TV lines standard UltraHD 4K mode 1000 TV lines or more 1080p/1080i modes
Sensitivity	F5.6 standard (59.94 Hz setting) F6.1 standard (50 Hz setting) (at 2000 lx, 3000K)
Minimum Illumination	19.5 lx (59.94 Hz setting) 16.2 lx (50 Hz setting) at F2.2, 24 dB
S/N Ratio	58 dB standard AGC: OFF, Gamma: OFF, Enhance: OFF Color matrix: OFF, Color temp: 5600K
Operating Temperature	0°C to 40°C / 32°F to 104°F
Operating Humidity	Less than 90% (non-condensing)
Weight	Approx. 70 g (2.5 oz)
Dimensions	W: 32.6 mm H: 38.6 mm D: 41 mm (1.28" x 1.52" x 1.61") Protruding portion is not included

## Camera Head Exterior Dimensions



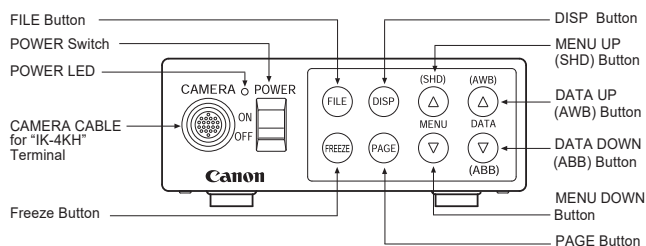
## IK-4KE Controller Specifications

Power Supply	12V DC±10%
Power Consumption	13.8 W
Scanning System	Progressive / Interlaced (Selectable)
Scan Frequency	H: 67.433 kHz, V: 59.94 Hz :1080p / 59.94 Hz 4K / 59.94 Hz 4 division output H: 56.250 kHz, V: 50 Hz :1080p / 50 Hz 4K / 59.94 Hz 4 division output H: 33.716 kHz, V: 59.94 Hz : 1080i / 59.94 Hz H: 28.125 kHz, V: 50 Hz : 1080i / 50 Hz
Operating Temperature	0°C to 40°C / 32°F to 104°F
Operating Humidity	Less than 90% (non-condensing)
Weight	Approx. 800 g (1.76 lbs.)
Dimensions	W: 110 mm, H: 40 mm, D: 196 mm (4.33" x 1.58" x 7.72")
Scene Files	5 User-configurable scene files
White Balance	Auto / Manual (Selectable)
Gain	Auto (-6 dB to 24 dB); Manual (-6 dB to 24 dB), OFF
Output Signal	4x 3G/HD-SDI
Electronic Shutter	Auto / Manual / OFF 1/60 – 1/10,000

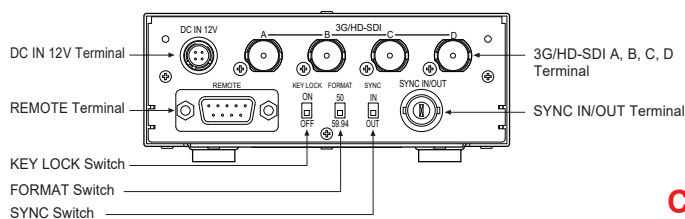
This product is marked with "CE" and complies therefore with the applicable harmonized European standards listed under the Directive 2014/30/EU and 2011/65/EU.

## Controller Front and Back Panels

### IK-4KE FRONT



### IK-4KE REAR



## System Components

For further details, contact your Toshiba ME/FA distributor.

### CAMERA HEAD

IK-4KH
--------

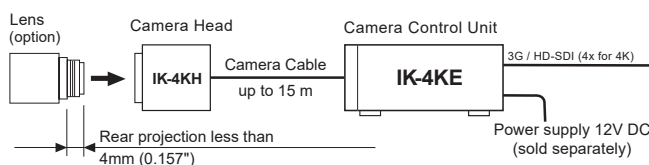
### CAMERA CONTROL UNIT

IK-4KE
--------

### CAMERA CABLE

Model	Length
EXC-3HD03	3 m
EXC-3HD06	6 m
EXC-3HD10	10 m
EXC-3HD15	15 m

## Connection



**Canon**  
Canon Europa N.V.

Bovenkerkerweg 59  
1185 XB Amstelveen  
The Netherlands

© 2019 Canon Europa N.V. (CENV) All rights reserved. All products and names mentioned are the property of their respective owners. While CENV has made every effort at the time of publication to ensure the accuracy of the information provided herein, product specifications, configurations, prices, system/component/options availability are all subject to change without notice.

When used for medical imaging applications, the customer assumes full responsibility and liability to determine suitability for use as well as responsibility for documentation and testing to comply with relevant medical device standards. CENV assumes no liability for such applications.

REFER TO OUR WEBSITE FOR THE LATEST UPDATES.