



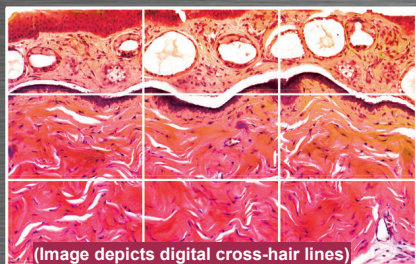
JCS-HR5U

FULL HD, ULTRA-COMPACT
DUAL-OUTPUT VIDEO CAMERA

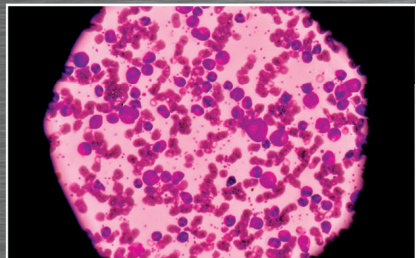
HDMI® & USB 3.0



(Lens not included)



(Image depicts digital cross-hair lines)



Features

- HDMI 1080p / 1080i output at 59.94Hz
- USB 3.0 1080p output at 59.94 fps maximum
- Simultaneous live view and USB output
- F10 sensitivity rivals three-chip camera performance
- 1/2.8" progressive-scan color CMOS sensor
- 12-color channel matrix adjustment
- Gamma correction
- Ultra-compact (approx 1.75" x 1.75" x 3") one-piece system
- 5 User-programmable settings files
- Integrates with PC for image capture and streaming (not provided)
- C-mount lens mount
- Digital crosshair lines

Applications

- Microscopy
- Bio imaging
- Scientific imaging
- Live tissue imaging

Real-Time 60 fps Full HD USB 3.0 Video Camera

The new JCS-HR5U camera represents an important advancement in clinical microscopy imaging applications. The ultra-compact, full HD video camera features both HDMI and SuperSpeed USB image outputs for *simultaneous*, real-time live viewing from a monitor plus high-res image capture to a computer. It is optimal for color documentation systems integration in the fields of bio imaging, scientific imaging, and live tissue imaging.

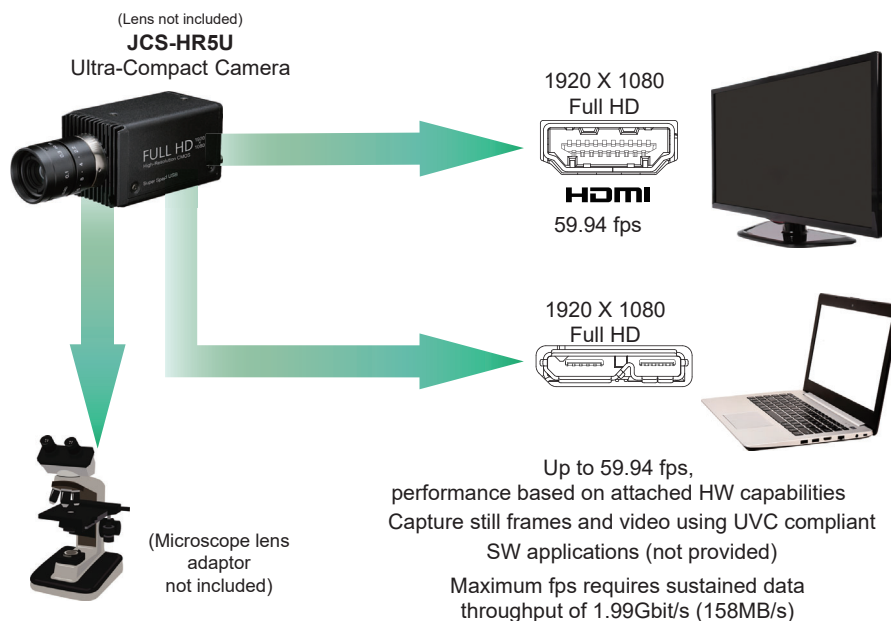
Canon

PERFORMANCE SPECIFICATIONS

Image sensor	1/2.8 inch color CMOS sensor (progressive scan, rolling shutter)
Lens mount	C mount
Image output	HDMI 1.4a 4:4:4 : 1920 x 1080 / 59.94Hz USB 3.0 (UVC1.1 compliant YUV4:2:2 : USB 3.1 Gen 1) 1920 x 1080 / 59.94fps (USB 3.0 mode theoretical maximum) 1920 x 1080 / 10fps (USB 2.0 mode theoretical maximum)
Sensitivity	F10 standard (2000lx, 3100K, gain OFF, gamma OFF, 59.94Hz); F11 standard (2000lx, 3100K, gain OFF, gamma OFF, 50Hz)
Minimum illumination	4lx standard (F1.4, 3100K, gain +20dB, gamma OFF, 59.94Hz) 3.3lx standard (F1.4, 3100K, gain +20dB, gamma OFF, 50Hz)
Power requirements	DC12V± 10%, power consumption approx. 4.5W
Environmental	0°C ~ + 40°C (32°F ~ +104°F) operating -20°C ~ + 60°C (-4°F ~ +140°F) non-operating Humidity 90° or less non-condensing
Gain	AUTO / MANUAL : 0 ~ 20dB / OFF
White balance	AWB (Automatic White Balance) / MANUAL
Shutter	AUTO / MANUAL (OFF ~ 1/10000s)
Image optimization function	MATRIX color correction (12 colors), gamma correction, detail gain, master pedestal chroma gain setting, knee correction
Special function	Flip / mirror, digital crosshair lines

This product is marked with "CE" and complies therefore with the applicable harmonized European standards listed under the Directive 2014/30/EU and 2011/65/EU.

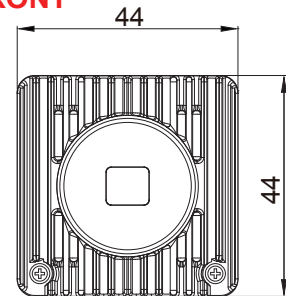
CONNECTIONS



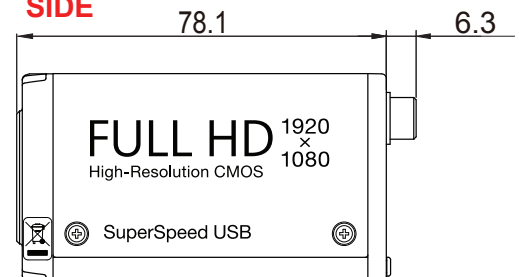
DIMENSIONS

Measurements in Millimeters [Inches]

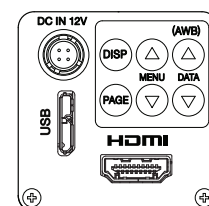
FRONT



SIDE



REAR



Weight approx. 170 g
[0.375 lbs]

Output & connector format;
HDMI 1.4a Type A terminal
USB Video Class, UVC 1.1 Micro-B connector
USB 3.1 Gen 1

© 2019 Canon Europa N.V. (CENV) All rights reserved. All products and names mentioned are the property of their respective owners. While CENV has made every effort at the time of publication to ensure the accuracy of the information provided herein, product specifications, configurations, prices, system/component/options availability are all subject to change without notice.

When used for medical imaging applications, the customer assumes full responsibility and liability to determine suitability for use as well as responsibility for documentation and testing to comply

REFER TO OUR WEBSITE FOR THE LATEST UPDATES.

Canon

Canon Europa N.V.

Bovenkerkerweg 59
1185 XB Amstelveen
The Netherlands

IK-JCS5U 20190810