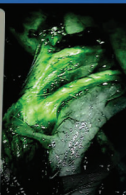


IK-HD5

3-CMOS 1080p
HD VIDEO CAMERA

Now with **USB3.0** option



Features

- 3-CMOS HD Sensors, 2.1MP, progressive, 1/2.9"
- 3G-SDI/HD-SDI and DVI-D output, 1920 x 1080
- Switchable between 1080p and 1080i
- Up to 1,000 TV lines resolution
- 5 User-configurable scene files
- Binning mode for 4x increase in sensitivity
- Image flip and mirror
- Gen-lock for 3D and multi-camera use
- Remote control via RS232
- C-mount lens mount

For enhanced near-infrared applications

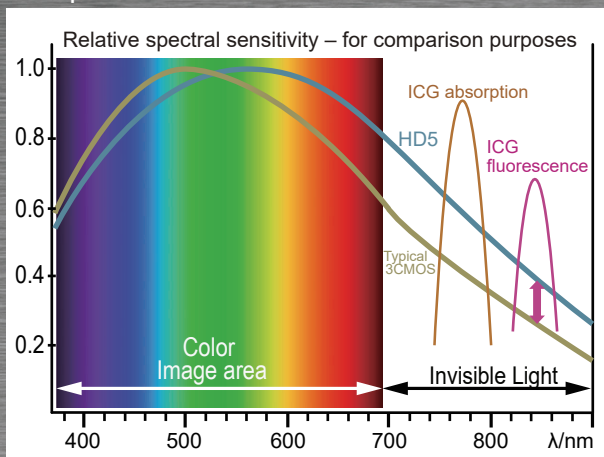
- Removable optical low pass filter
- Provides switchable output between full-HD video in visible and near-infrared spectrums
- Approximately 3dB increased sensitivity in near IR
- Expanded menu functions for red filter IR mode

IK-HD5U configuration

- USB3.0 and DVI-D outputs
- 1920x1080 at 59.94fps via USB3.0 or 10fps in USB2.0
- Addition of front panel freeze frame
- Long exposure made up to 60frames, (1 second)

USB output model is newly added to IK-HD5 series, 3G-SDI / HD-SDI output model and USB output model can be selected according to the application, of course DVI-D output is provided in both and removable optical low pass filter (OLPF) for dual-mode imaging applications switchable between visible light and near-infrared visualization. This HD camera can be used for any HD video application as well as applications which use fluorescing agents. Its imaging capabilities are well-suited as a component of surgical microscopy, endoscopy, IR inspection and defense imaging systems.

* Note: As IK-HD5 does not acquire the medical standard of IEC60601, it is necessary for the customer to cope.



Incorporating Canon's innovative three-chip technology, the IK-HD5 provides approximately 3dB increased sensitivity in the near-infrared spectrum through 700-870 nm. When equipped with the appropriate optics and filters, the IK-HD5 can be used for both visible light and near IR imaging applications such as indocyanine green (ICG) and other fluorescing agents.



Canon

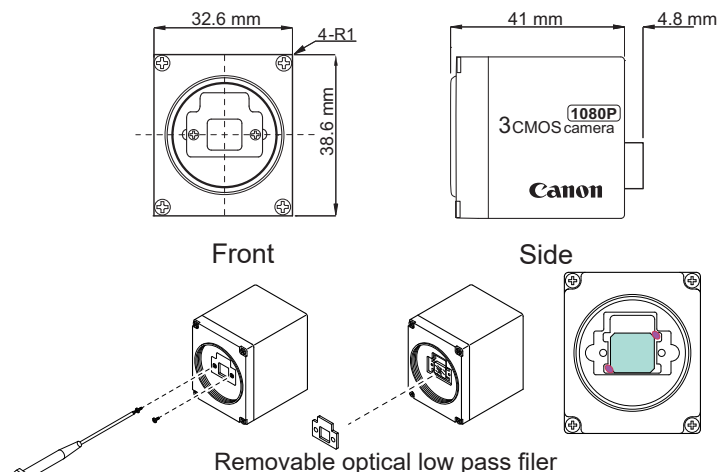
IK-HD5

Camera Head Specifications

IK-HD5H

Image Sensor	3-CMOS, 1/2.9 inch, 2.1MP progressive
Output Resolution	Horizontal : 1920, Vertical : 1080
Resolution : H : V	1000 TV lines standard 1000 TV lines standard
Sensitivity	F10 standard (59.94 Hz setting) F11 standard (50 Hz setting) (at 2000 lx, 3000 K)
Minimum Illumination	4.8 lx (59.94 Hz setting) 4.0 lx (50 Hz setting)) at F2.2, 20 dB, BINNING: ON 9.6 lx (59.94 Hz setting) 8.0 lx (50 Hz setting) at F2.2, 20 dB, BINNING: OFF
S/N Ratio	56 dB standard AGC: OFF, Gamma: OFF, Enhance: OFF
Operating Temperature	0°C to 40°C / 32°F to 104°F
Operating Humidity	Less than 90% (non-condensing)
Weight	Approx. 93 g (3.3 oz)
Dimensions	W: 32.6 mm H: 38.6 mm D: 41 mm (1.28" x 1.52" x 1.61") Protruding portion is not included

Camera Head Exterior Dimensions



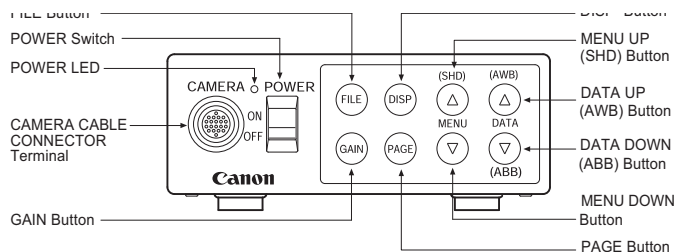
IK-HD5E / IK-HD5U Controller Specifications

Power Supply	12V DC±10%
Power Consumption	10.3 W
Scanning System	Progressive / Interlaced (Selectable)
Scan Frequency	H: 67.433 kHz, V:59.94 Hz :1080p / 59.94 Hz H: 56.250 kHz, V:50 Hz :1080p / 50 Hz H: 33.716 kHz, V:59.94 Hz : 1080i / 59.94 Hz H: 28.125 kHz, V:50 Hz : 1080i / 50 Hz
Operating Temperature	0°C to 40°C / 32°F to 104°F
Operating Humidity	Less than 90% (non-condensing)
Weight	Approx. 600 g (1.32 lbs.)
Dimensions	W: 110 mm, H: 40 mm, D: 186 mm (4.33" x 1.58" x 7.32")
Scene Files	5 User-configurable scene files
White Balance	Auto / Manual (Selectable)
Gain	Auto (-15dB to 20dB); Manual (-15dB to 20 dB), OFF
Output Signal	DVI-D / 3G-SDI or HD-SDI (IK-HD5E) DVI-D / USB micro-B (IK-HD5U) 1920 x 1080 / 59.94fps max. USB3.0 1920 x 1080 / 10fps max. USB2.0
Electronic Shutter	Auto / Manual (OFF 1/60 - 1/10,000) / Syncro Scan

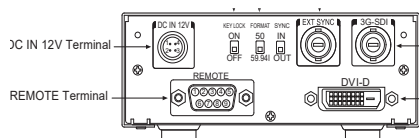
This product is marked with "CE" and complies therefore with the applicable harmonized European standards listed under the Directive 2014/30/EU and 2011/65/EU.

Controller Front and Back Panels

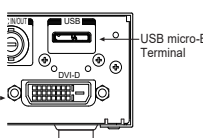
IK-HD5E FRONT



IK-HD5E REAR



IK-HD5U REAR



System Components

For further details, contact your Toshiba ME/FA distributor.

CAMERA HEAD

IK-HD5H

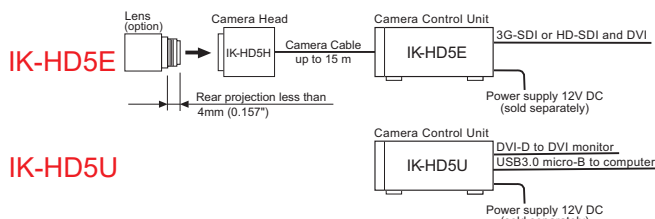
CAMERA CABLE

Model	Length
EXC-3HD03	3 m
EXC-3HD06	6 m
EXC-3HD10	10 m
EXC-3HD15	15 m

CAMERA CONTROL UNIT

IK-HD5E (DVI-D/3G-SDI or HD-SDI)
IK-HD5U (DVI-D/USB3.0 micro-B)

Connection



Compatible display, computer, video output cables, USB3.0 cables and lenses are commercial products, not included.

Canon
Canon Europa N.V.
 Bovenkerkerweg 59
 1185 XB Amstelveen
 The Netherlands

© 2019 Canon Europa N.V. (CENV) All rights reserved. All products and names mentioned are the property of their respective owners. While CENV has made every effort at the time of publication to ensure the accuracy of the information provided herein, product specifications, configurations, prices, system/component/options availability are all subject to change without notice.

When used for medical imaging applications, the customer assumes full responsibility and liability to determine suitability for use as well as responsibility for documentation and testing to comply with relevant medical device standards. CENV assumes no liability for such applications.

REFER TO OUR WEBSITE FOR THE LATEST UPDATES.