



**TAKE CONTROL OF YOUR  
BUSINESS-CRITICAL DOCUMENT PROCESSES**

---

[www.syshub.global](http://www.syshub.global)

# Experience the power and flexibility of uniFLOW sysHUB

uniFLOW sysHUB can equip your enterprise with a secure, unified and well-managed document input and output processing system. It can help you embrace digital delivery systems, enhance your information and integrate all your critical document processes into one streamlined system with bidirectional communications to monitor, check and validate - improving your competitive edge and shortening customer response times.

"With uniFLOW sysHUB, we have fundamentally restructured and centralized our output management based on SAP. Our specialist departments are thus able to compile the extensive documentation and accompanying documents for the coating systems that we sell much faster. The communication channels in the solution were defined and adapted according to our specific requirements. This solution simplifies the maintenance and adjustments as well as the troubleshooting."

*Sylvio Reh, Head of Integrated Business Services  
Von Ardenne*

"Flexibility, security and reliability characterise the central printing and document service that we have built with uniFLOW sysHUB. The process standards that we have developed are reliable, powerful and future-proof."

*Rudolf Wolf, DMS Service and Print Output Manager  
WWK Lebensversicherung a.G.*



# Your business challenges

Successfully creating and delivering critical documents that support your business processes (e.g. contracts, statements, invoices, airline tickets etc.), is essential for your company – both from a commercial and a brand reputation perspective.

But to deliver the right information, in the right format, at the right place, at the right time, to the right people and at the right price you need to meet the challenges of modern information logistics. Typical challenges include:

## **Exposing and overcoming process obstacles and bottlenecks**

Are you aware of weak-points in your document delivery processes and do you know how to solve them in the most efficient way?

## **Creating a closed loop system**

Do you have a system that checks, measures and validates the outcome of each stage of the document delivery process?

## **Providing proof of delivery**

Does your ERP system receive a confirmation and provide proof to any system or person of choice (eg initiator or owner) when a document is delivered according to plan?

## **Ensuring visibility of document progress via the delivery process**

Does your system log progress status through the stages of any given delivery process, providing continuous updates on throughput, error rates, speed, and other key insights?

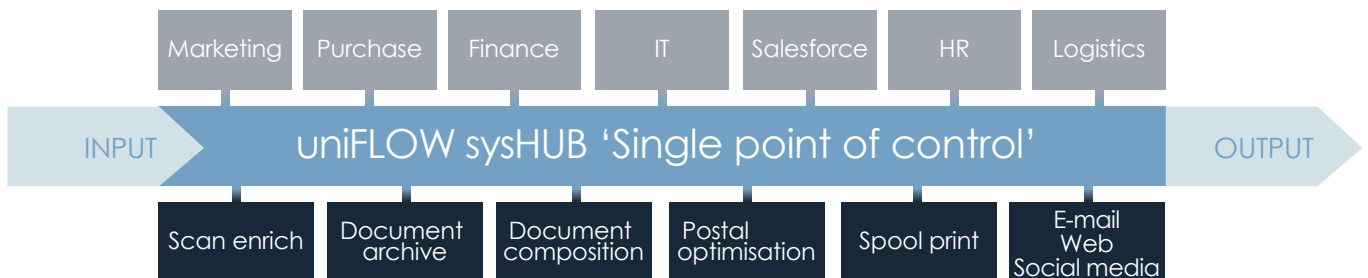
## **Delivering an automated error handling process**

Is your business able to respond in the best way when things go wrong? Do you have an automated error detection and response workflow to help your business formalise the most effective response to any given problem or situation?



# Certified SAP integration

The best way to overcome your information logistics challenges is by automating your document intensive processes with uniFLOW sysHUB. A powerful and flexible solution.



## Single point of control

uniFLOW sysHUB gives you an easily integrated single point of control for configuring, monitoring and managing the entire lifecycle of your organisation's businesscritical documents.

## Automated workflows

With uniFLOW sysHUB we can design automated systems and workflows that streamline the creation and processing of your electronic or paper documents. A fit-forfuture platform solution, it offers the flexibility to meet both your current and future needs - from automation of simple process steps to orchestration of a complete document process.

## A wide range of applications

uniFLOW sysHUB is ideal for applications across a wide range of industries. Examples include:

**Manufacturing** – providing labels of highest quality in a timely manner

**Logistics** – production of packing and shipping documentation

**Banking** – sending and tracking print jobs to external print service providers

**Insurance** – automation of claim/ refund handling process

**SAP<sup>®</sup> Certified**  
Integration with SAP S/4HANA<sup>®</sup>



# The uniFLOW sysHUB advantage

uniFLOW sysHUB can help you to manage the complete life-cycle of your business-critical documents; installing a single point of control to streamline and govern your high risk processes.

## uniFLOW sysHUB offers great flexibility and seamless integration with existing systems

- It integrates seamlessly with your legacy IT systems - so you can protect your existing investments. You won't need to burn resources to replace existing systems or integrate with them or build additional capabilities externally.
- It enables easier configuration management thanks to one central platform for configuration and management of document workflows and integrations.
- It offers a quicker response to changing workflows, processes or business needs thanks to centralised control by one key application, using one language and logic in an easy-to-use interface.
- It is ready to meet your plans for future expansion thanks to the flexible uniFLOW sysHUB software platform that enables you to connect/ disconnect applications to your business architecture through a central platform.
- It supports variable data printing and on demand options.

## uniFLOW sysHUB delivers complete end-to-end process control and transparency

- It ensures fewer failures, removes the threat of human errors and facilitates a quicker response to failures in document delivery, thanks to built in automated failover mechanisms and process trigger notifications.
- It enables full process visibility with track and trace capability for monitoring and logging process steps.
- It ensures proof of delivery by building a robust document delivery process including bi-directional feedback loops with external applications – all managed by uniFLOW sysHUB.

## uniFLOW sysHUB process automation offers reduced costs and increased efficiency

- It effectively saves on labour costs, and thanks to automated error-correction, which reduces the levels of human intervention required, enables you to resolve issues quickly.
- It dramatically increases uptime of your core business processes. A uniFLOW sysHUB streamlined and integrated system reduces the chances of failure and increases the ability to intervene if required.

# How uniFLOW sysHUB works

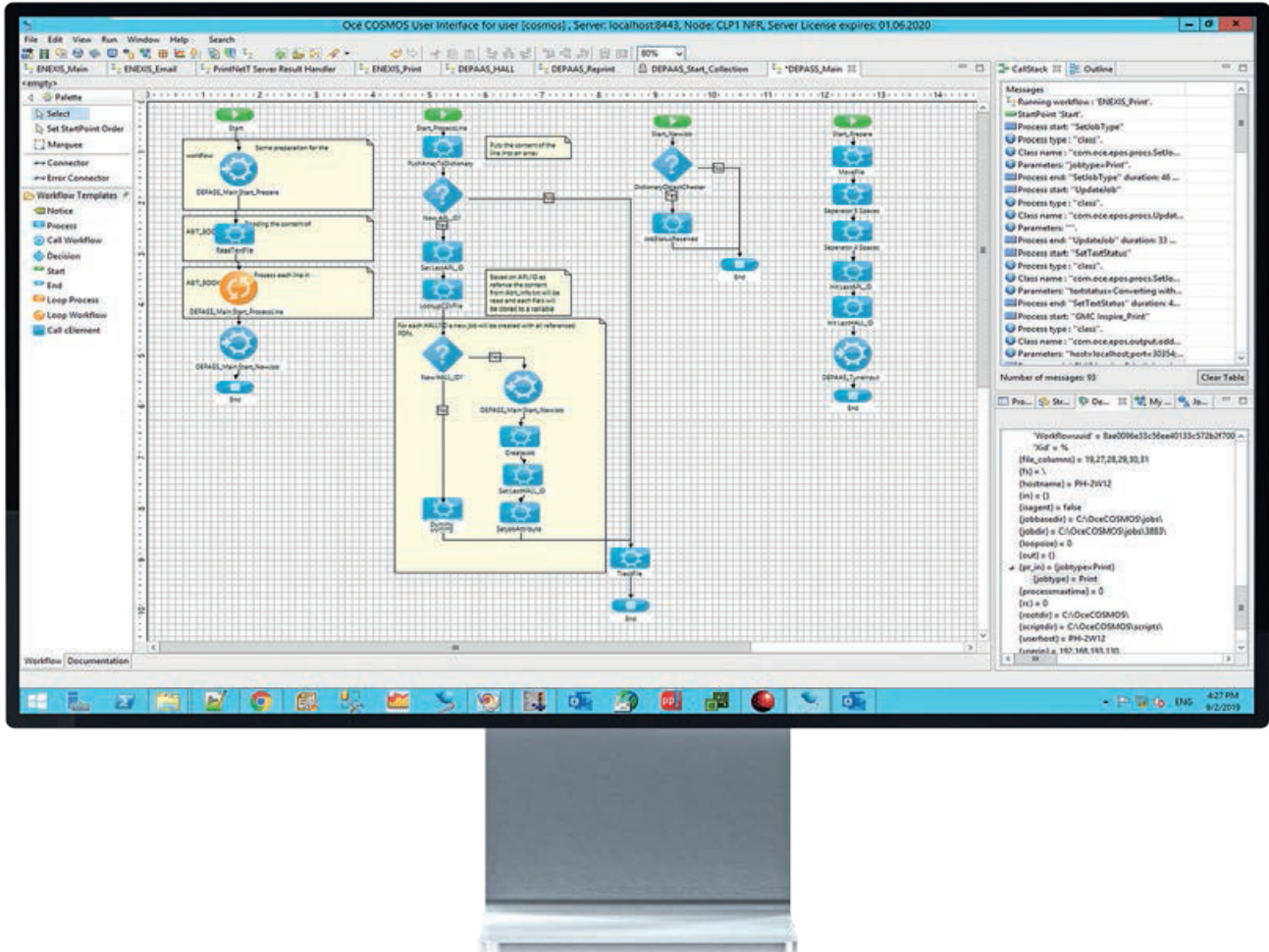
uniFLOW sysHUB solves your information logistics challenges by integrating and managing individual applications in one platform with a single point of control and by automating repetitive processes in configurable workflows. It comprises two major application areas:

## Automation and integration toolbox

- Easy workflow configuration
- Pre-defined connectors
- Based on industry standards
- Economic and efficient customisation

## Document process platform

- Unmatched Performance and scalability
- Central process monitoring
- Track and trace
- Integrating isles of automation





# uniFLOW sysHUB capabilities at a glance

## Real-time visibility

uniFLOW sysHUB automates every step in your document management workflow, giving you real-time visibility of all job statuses and complete control over every process.

- Automated and on-demand reports on every aspect of your document workflows - from historical logs and throughput performance to error rate and costs.
- Automated error-correction reduces the need for human intervention, while intelligent resource monitoring ensures optimal use of all available resources.

## Easy to integrate

uniFLOW sysHUB acts as a standardised central hub for all applications involved in your document management workflow, handling a wide range of inputs and outputs while managing connected applications. If an application is added or removed, uniFLOW sysHUB can be adapted to suit any new processes, applications or middleware.

## Maximum compatibility

No matter what platforms your organisation uses or however many different applications it runs, uniFLOW sysHUB talks their language. It is built on the Java programming language, an industry standard that's light on system resources yet flexible enough to communicate with any number of applications - even in the most complex document management workflows.

## Robust system architecture

uniFLOW sysHUB offers the scalability and high availability your business needs to ensure resilient business-critical document management processes.

- Multiple uniFLOW sysHUB servers can be linked in a 'grid' to work seamlessly together. This ensures the entire platform remains functional.
- The number of job processors can be enhanced to increase throughput
- uniFLOW sysHUB can also load balance multiple other applications to ensure high throughput and guarantee uptime should any of these applications fail.

## Fully customisable interface

You can quickly create or amend workflows using the intuitive uniFLOW sysHUB interface - an easy-to-use drag-and-drop environment with quick-start shortcuts. Working with your trusted Canon systems integration partner, you can tailor the intuitive user interface to suit any scenarios - all with a consistent design that helps operators complete tasks quickly and easily.

## Certified SAP connections

uniFLOW sysHUB integrates seamlessly with your organisation's SAP ERP system to improve your whole document output process. It can accept, analyse and transfer any data output from the SAP Output Management System and convert it into nice looking documents before being sent for printing or email distribution - all accurately routed and tracked by uniFLOW sysHUB.



[www.syshub.global](http://www.syshub.global)  
[www.uniflow.global](http://www.uniflow.global)  
[www.uniflowonline.com](http://www.uniflowonline.com)