

REDUCE YOUR ENVIRONMENTAL IMPACTS WITH CANON

共生

OUR ETHOS

Canon operates according to the philosophy of Kyosei, a Japanese word meaning 'living and working together for the common good'. The 'common good' is defined by the UN Sustainable Development Goals (SDGs) and provide a framework for Canon to manage its environmental and social impacts.



OUR COMMITMENTS HELP YOU MEET YOURS

We've aligned our practices with the SDGs, a blueprint to achieve a better and more sustainable future for all. They address the global challenges we face, including those related to poverty, inequality, climate change, environmental degradation, peace and justice.

INDUSTRY RECOGNITION

Our environmental initiatives have been recognised by the international environmental non-profit organisation CDP since 2014, in the fields of climate change and water security. We are listed on the CDP's A- List in both categories. The CDP evaluates major companies worldwide on their efforts to tackle climate change.



1. RESPONSIBLE MANUFACTURING

Our products meet industry standards for manufacturing quality and sustainability in the supply chain.

Canon aims to achieve net-zero CO2 emissions from its business activities by 2050 and will deliver this by taking account of environmental impacts at each stage of the product lifecycle and working to reduce them. Global environmental and social procurement standards, lifecycle assessment (LCA) methodology and globally ISO14001 certified EMS have been introduced to enable reductions of lifecycle CO2 emissions of our products by 43% since 2008 (an average of improvement of 4.1% per year).



2. LOGICAL LOGISTICS

We are reducing environmental impacts from logistics, supporting your goals for a sustainable supply chain.

By replacing EPS with pulp-mold in hardware packaging and by changing consumable blister packages from PE and PET plastic to cardboard we will remove circa. 209 tonnes of plastic waste per year.



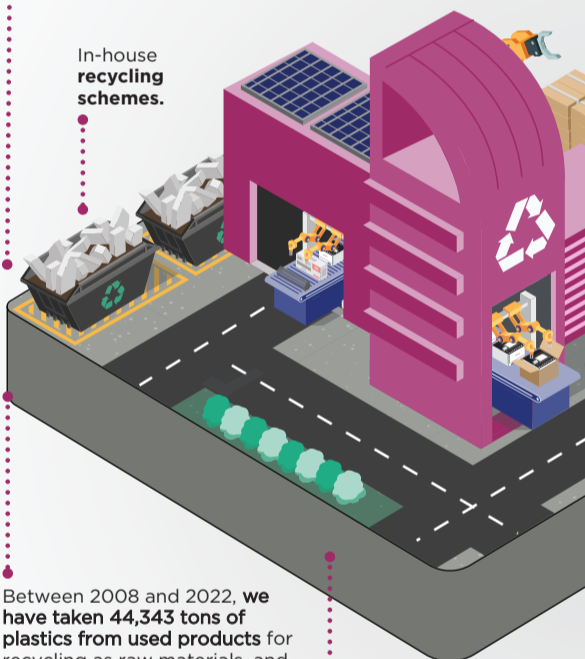
We have saved around 135,000 shipments of individual toners annually in Europe, by consolidating around 40,000 single device stock locations into around 2,300, and applying a forward looking view to toner delivery.

When delivering toner, we use a recyclable material called AIR SHELL, which uses air pressure to improve cushioning, reducing packaging volume by 30% and carbon emissions during transportation by 20%.

4. END OF LIFE AND BEYOND

Canon promotes the repair, reuse and recycling of used products and parts, helping your business support the circular economy.

In-house recycling schemes.



Between 2008 and 2022, we have taken 44,343 tons of plastics from used products for recycling as raw materials, and another 35,126 tons of products and parts were reused directly.

We remanufacture our best-selling Multifunction Printers (MFPs) into new condition, in purpose-built factories, using 80% of the original MFP.

Between 2006 and 2022 we have collected and recycled 2,731 tons of inkjet cartridges from 30 countries.

Between 1990 and 2022 we have collected, reused and recycled 454,000 tons of laser toner cartridge from 24 countries achieving a cumulative reduction in the use of new resources linked to the manufacture of new laser toner cartridges by approximately 322,000 tons.

Canon EMEA National Sales Offices repair over 80,000 products returned from customers in and out of warranty each year.

Our media products are sourced from responsibly managed forests, certified by the FSC or PEFC.

These certifications ensure that our paper is produced from sustainable forests, where replanting equals extraction levels - ensuring the prevention of biodiversity and habitat loss through deforestation.

Customers will have the ability to compensate for unavoidable CO2 emissions arising from product use phase of the lifecycle through our Climate Project Contribution offering where available.

Implementing a well-designed Optimisation Plan, we can reduce paper consumption by 50% by mandating double sided print.

'Toner save', when selected, ensures that half the usual amount of toner is used during printing, whilst My Print Anywhere guarantees that documents sent to the printer are only printed if released to do so.

The imageRUNNER ADVANCE DX C5860i achieves a 13% reduction in CO2 emissions during customer use compared to the previous model due to low melting-point toner and a motor that optimally controls the electric current.

A4 monochrome laser printer LBP162/161 achieves the lowest electric power consumption for its range, at 0.6W.

3. PRODUCTS IN ACTION

Canon is driving forward energy-efficient design across a wide range of product types for the workspaces of the future. Thanks to energy-saving technologies used in office equipment, Canon products achieved cumulative energy savings of 66,858 GWh between 2008 and 2022. This is expected to result in a CO2 reduction of 30,780,000 tons.

DID YOU KNOW?

Following the principle of 'universal design', our products include a wide range of features to make them accessible to all, including individuals with mobility, sight, hearing and cognition impairments such as:



Audio Instructions



Access handles - allowing printer operation from a seated position



Voice controls

