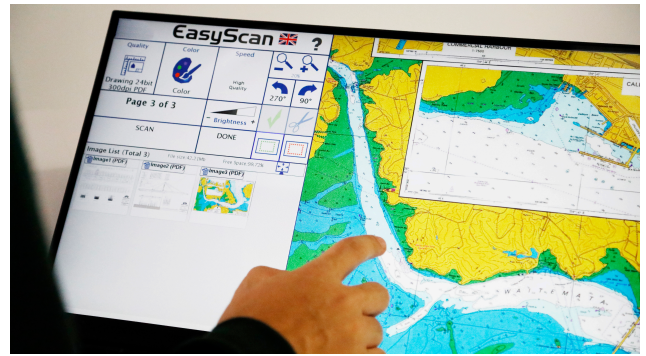


EASY PRODUCTIVE HIGH QUALITY

SCANNER PROFESSIONAL II

First class productive scanning for professionals

The Scanner Professional II is a highly productive scanner that generates superb images. The Scanner Professional II is based on CCD technology, common in high-end scanners. The Scanner Professional II is standard a 44-inch wide scanner, but can be upgraded to 48 inch, to enable A0/E-size landscape scanning. The Linux-based embedded controller is highly secure, and has sufficient power and storage to support productive, high quality scanning in combination with the latest PlotWave and ColorWave printer series. The 22-inch colour touch screen provides users an intuitive scan workflow with detailed scan previews.



SCANNER PROFESSIONAL II

For demanding, complex Large Format scan and copy jobs, you need a scanner that produces impressive results every time.

The Scanner Professional II makes scanning simple with its large, intuitive user interface.



TECHNICAL SPECIFICATIONS

SCANNER PROFESSIONAL II

PRODUCT SPECIFICATIONS	
Maximum document size	1270 mm (50 inches) width
Maximum scan width	1118 mm (44 inches)
Upgrade option to 48 inch	max. 1220 mm (48 inches)
Document thickness	Max. 2.5 mm (0.1 inches)
Scanner resolution / optical	1200 x 9600 dpi / 1200 x 600 dpi
Speed	150 dpi – 23 m/min (15.1 inches/sec) 200 dpi – 23 m/min (15.1 inches/sec) 600 dpi – 7,7 m/min (5 inches/sec) 1200 dpi – 3,8 m/min (2,5 inches/sec)
Color depth	48 bit colour, 16 bit grayscale
Scan output	24 bit colour, 8 bit grayscale, bitonal, enhanced halftone
File formats	Multipage PDF (PDF/A) and TIFF, JPEG, JPEG 2000, PNM, PNG, BMP, TIFF (Raw, G3, G4, LZW, JPEG) AutoCAD DWF, JBIG, DjVu, DICOM, PCX, Postscript, EPS, Raw data
Batch scanning	Optional Batch Scan Wizard license, for professional management of large scanning volumes and jobs
Camera	Four Tri-colour CCD cameras, 90,000 pixels, encapsulated and dust-proof
Light source	Two lamps with 204 white LEDs each, no IR/UV emission
Embedded controller	64 bit Linux, Intel® Core™ Gen 9 processor, 250GB SSD, 16GB RAM for very long scans
Touchscreen / Monitor	7 inch colour touchscreen / 22 inch colour touchscreen (standard included)
USB	1 USB 3.0 port
Interface	1 GBit Fast Ethernet with TCP/IP based
Dimensions (scanner, stand and touch screen)	1515 x 1425 x 507 mm (59,6 x 56.1 x 20 inches) (H x W x D)
Weight (scanner, stand and touch screen)	90,5 kg / 200 lbs
Shipping weight	140,5 kg / 310 lbs
Electrical connection	100-240 V AC, 47 - 63 Hz, (external power supply, complies with ECO standard CEC level VI)
Power consumption	< 0.5 W (Sleep) / 4.7 W (Standby) / < 60 W (Ready to scan) / < 120 W (Scanning)
Operating temperature	5 to 40 °C, 40 to 105 °F
Relative humidity	20 to 80 % (non-condensing)
Sound	< 35 dB(A) (Scanning) / < 25 dB(A) (Standby)

© 2024 Canon Production Printing No part of this publication may be copied, modified, reproduced or transmitted in any form or by any means, electronic, manual, or otherwise, without the prior written permission of Canon Production Printing. Illustrations and printer output images are simulated and do not necessarily apply to products and services offered in each local market. The content of this publication should neither be construed as any guarantee or warranty with regard to specific properties or specifications nor of technical performance or suitability for particular applications. The content of this publication may be subject to changes from time to time without notice. Canon Production Printing shall not be liable for any direct, indirect or consequential damages of any nature, or losses or expenses resulting from the use of the contents of this publication.