

STREAMLINED WORKFLOW YEARS AHEAD

Canon



PRISMA
Tech Suite

STREAMLINED WORKFLOW YEARS AHEAD

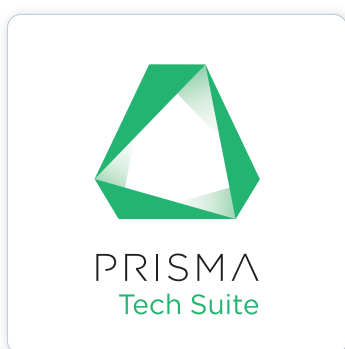
The PRISMA Tech Suite is a set of software solutions that helps customers in the market of large format technical drawings and designs to streamline their workflow in an easy way and to stay in control of their print operations.

Build on proven heritage

The PRISMA Tech Suite is developed based on years of expertise in the architecture, engineering and construction community, and helps customers to stay years ahead.

Print users benefit from solid job preparation and increased productivity with a powerful workflow application designed to help with their day-to-day print operations.

The selected printer tools are designed and tailored to optimize the performance of a diverse range of Canon printers.





PRISMA Tech Suite

Create breathtaking applications while staying in control of your printer, with a powerful workflow application and printer tools that are designed to help you with your day-to-day print operations.



PRISMAproduce Tech

Compose, manage and submit complex sets of documents from your web browser to one or more printers at a time.



PRISMAlytics Dashboard

Get comprehensive overviews to monitor and maximise the production of your print operations with this secure cloud-based management information tool.



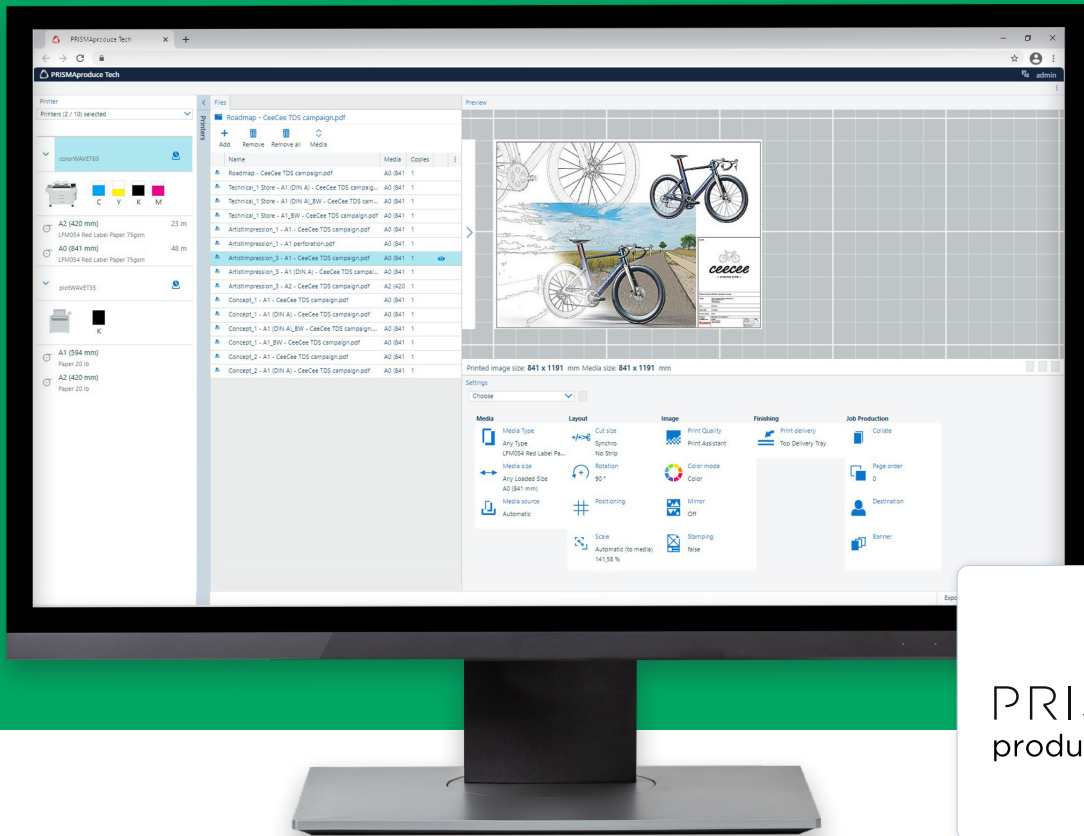
PRISMAlytics Accounting

Capture data for cost charging and usage monitoring with this cloud-based reporting tool.



PRISMAservice

Maximise your uptime with a central platform for all service activities. Provide faster, more efficient and more effective customer support. For Canon's Service and Support organisations and servicing partners.



PRISMAPRODUCE TECH

A powerful workflow application and a user-friendly way to create document sets of dozens of files and submit them easily to your plotWAVE, colorWAVE and a selection of imagePROGRAF printers.

- ➔ An **easy-to-use** workflow application built on our years of expertise in developing large-format technical document plotters, printers, copy and scan systems
- ➔ With the new, easy-to-use server concept you can **submit print jobs to up to 50 connected printers** from a browser on any computer in your network
- ➔ Benefit from a **more consistent print process** with more reliable print quality, using dedicated templates and with a more easy IT maintenance

PRISMALYTICS DASHBOARD

An easy-to-use cloud-based printer tool that provides comprehensive overviews of a diverse range of Canon printers, to help you maximise the productivity of your print operations.



- ➔ Empowers users with **factual insights into the performance** of their engine fleet. By that, it enables managers to optimise productivity and helps to reduce operational costs
- ➔ **Analyse the performance of your plotWAVE, colorWAVE** and a diverse range of other Canon printers (including a selection of imagePROGRAF printers), all in one place. It allows you to monitor KPIs with information that is retrieved straight from the plotWAVE and colorWAVE POWERSync or POWERSync+ controller
- ➔ **Easily accessible via PRISMA Home:** the central platform and 'home' of our cloud-based PRISMA workflow applications and print management tools
- ➔ **Clear and easy-to-use dashboard** to collect KPI data and display this information in a clear time-based dashboard. This easy-to-use dashboard provides insights and comparisons of engine activities like printed volume, idle time or toner and media usage
- ➔ **Collecting, and reporting on critical KPI data,** and groups as well as visualises them over time. Data can be exported as a CSV file, allowing further processing in other management applications and usage in management reports

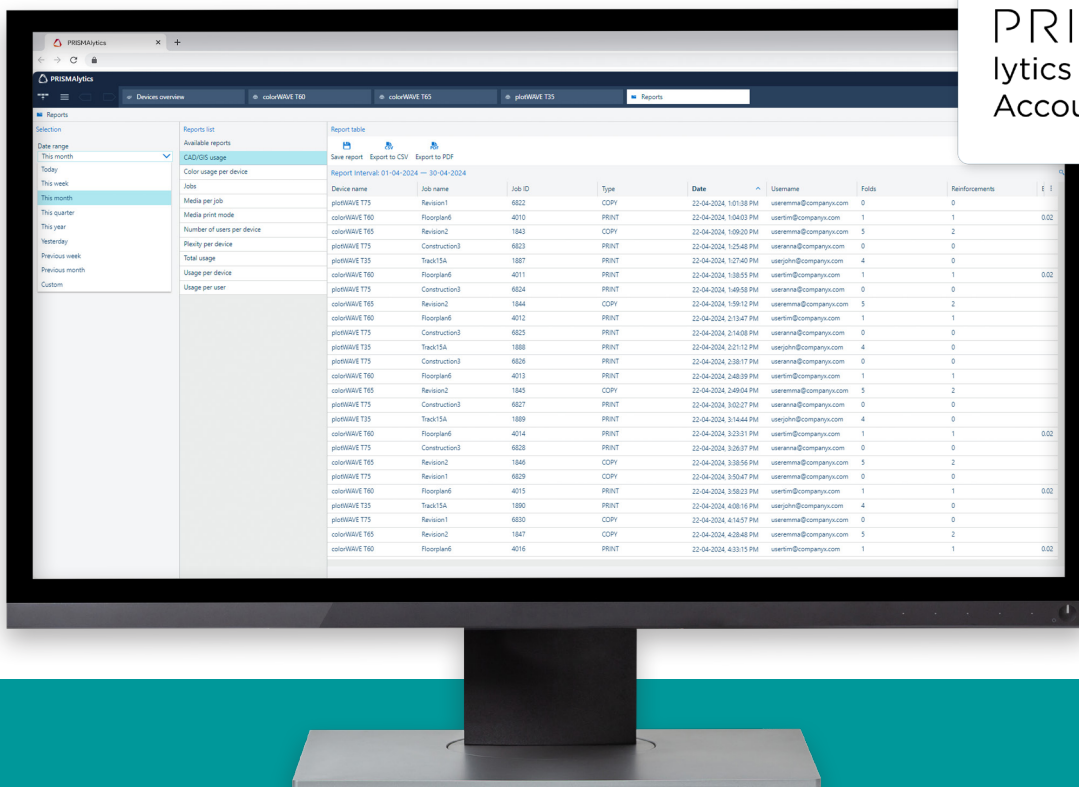


PRISMA
lytics
Dashboard

PRISMALYTICS ACCOUNTING

An easy-to-use cloud-based printer tool that offers detailed reports of a diverse range of Canon printers to facilitate cost allocation.

- ➔ **Monitor costs** of your connected plotWAVE, colorWAVE and a diverse range of other Canon printers, all in one place. Keep track of all print jobs, printed square meters or feet, mediatype and toner/ink usage and folding behaviour
- ➔ **Setup your own accounting dialogue** with up to 10 customizable fields to match your accounting needs. This will collect the required accounting information via either Driver Select, Publisher Express or PRISMAproduce Tech
- ➔ **Gather costs of the print production** from multiple locations, all in one place. It allows companies to gather cost-related data from different locations
- ➔ **Customizable reporting** via standard- and engine-related reports, where you can remove or reorder columns or filter by values. Additional reports related to users and consumption are optional
- ➔ **Quick & easy implementation;** connect your plotWAVE, colorWAVE and other Canon printers to PRISMA Home, activate your PRISMA Home subscription and start using PRISMALytics Accounting without additional training



PRISMASERVICE

The central knowledge platform that helps to provide faster, more efficient and more effective customer support.



➔ **Provide information and insights** to make performance-critical decisions, also for your plotWAVE, colorWAVE and a selection of imagePROGRAF printers

➔ Find the **related printer information** based on product type or serial numbers

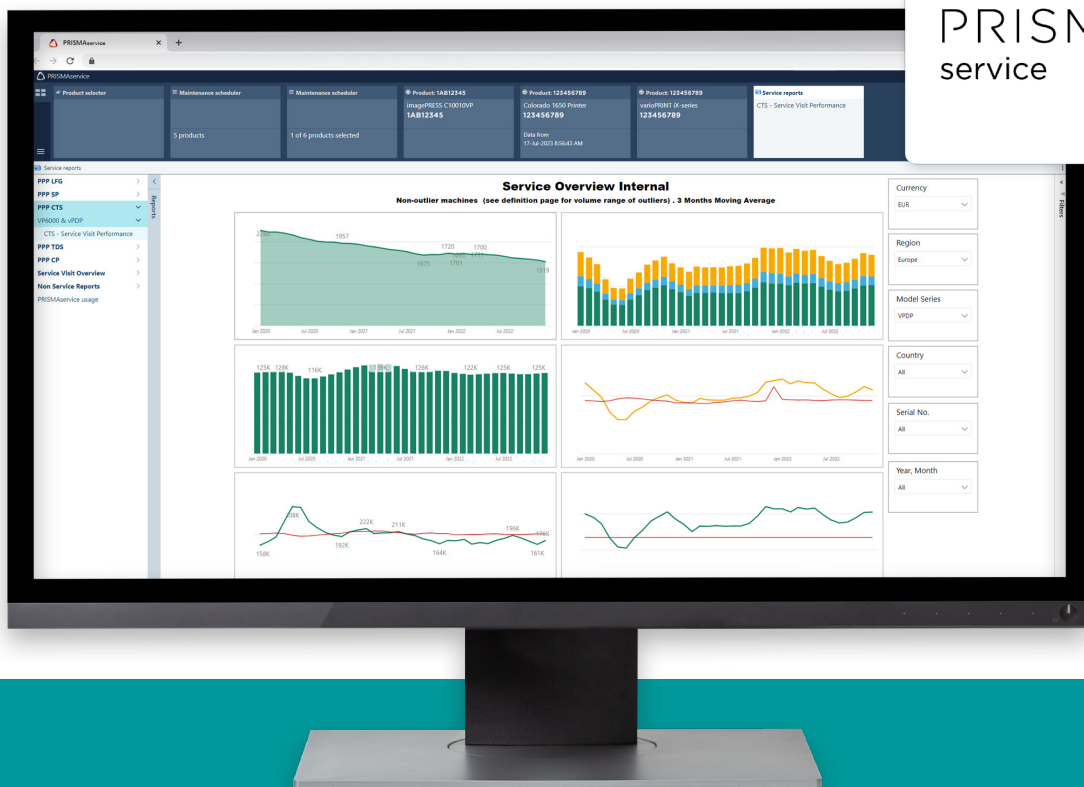
➔ **View and adapt maintenance activities** to prepare service visits and remote service activities

➔ **Analyze important usage and performance data** available per device and installation

➔ **Provide insights** on toner-, ink- and media usage, service clicks and printer performance

➔ Access the **latest service documentation** and modification- and information bulletins

➔ **Download** all relevant billing **meter readings** and get updates emailed automatically if needed



© 2024 Canon Production Printing. Canon and imagePROGRAF are registered trademarks of Canon Inc.. plotWAVE and colorWAVE are registered trademarks of Canon Production Printing Netherlands B.V. All other trademarks are the property of their respective owners and hereby acknowledged. No part of this publication may be copied, modified, reproduced or transmitted in any form or by any means, electronic, manual, or otherwise, without the prior written permission of Canon Production Printing. Illustrations and printer output images are simulated and do not necessarily apply to products and services offered in each local market. The content of this publication should neither be construed as any guarantee or warranty with regard to specific properties or specifications nor of technical performance or suitability for particular applications. The content of this publication may be subject to changes from time to time without notice. Canon Production Printing shall not be liable for any direct, indirect or consequential damages of any nature, or losses or expenses resulting from the use of the contents of this publication.

The Canon logo is displayed in a bold, red, sans-serif font.

Canon Europe
canon-europe.com
English edition