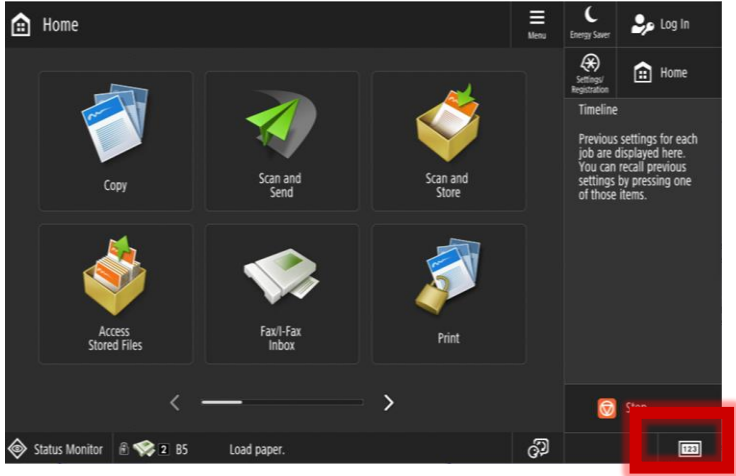


HOW TO PERFORM A COMMUNICATION TEST ON YOUR IMAGERUNNER ADVANCE DX

This guide shows you how to perform a communication test on your Canon ImageRUNNER Advance DX

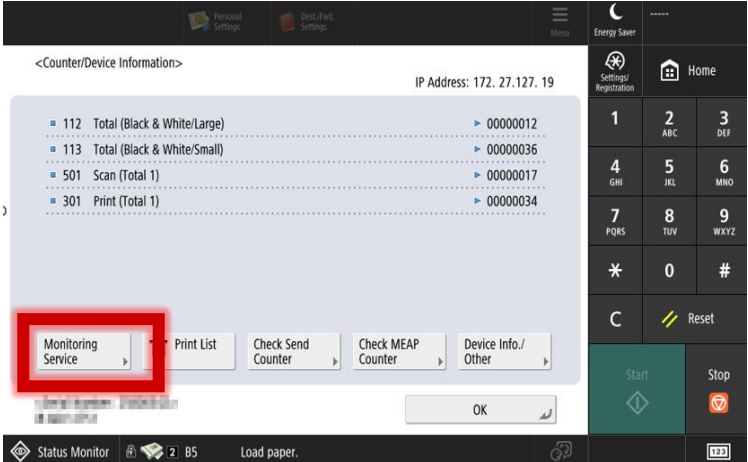
1

Press the 123 key



2

Select Monitoring Service from the menu

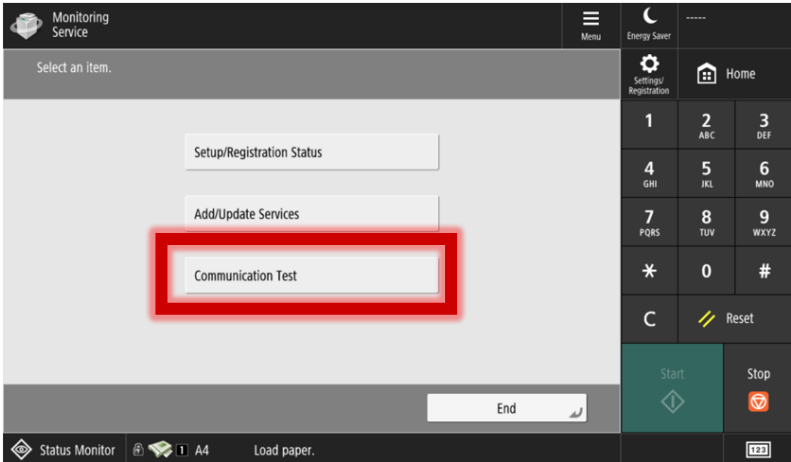
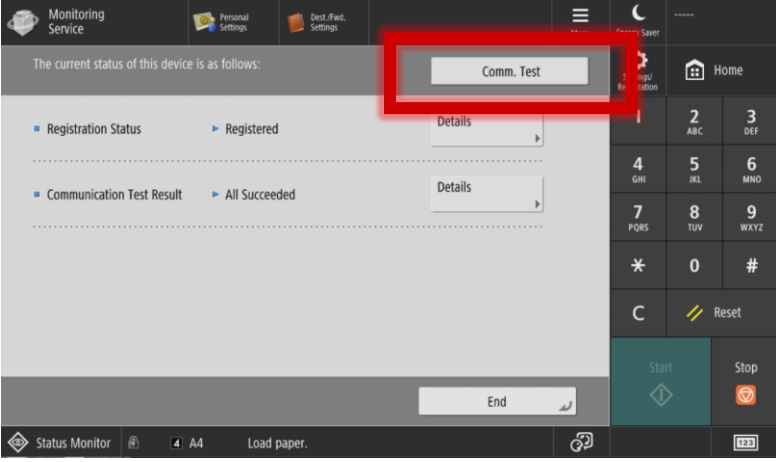
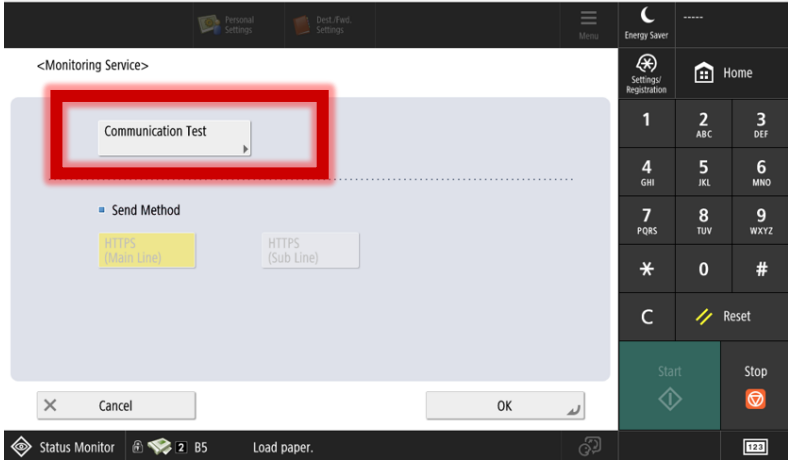


HOW TO PERFORM A COMMUNICATION TEST ON YOUR IMAGERUNNER ADVANCE DX

This guide shows you how to perform a communication test on your Canon ImageRUNNER Advance DX

3

Press the Communication Test \ Comm. Test button.
(This may vary depending on the software version of your device. You will see one of the 3 screens below)



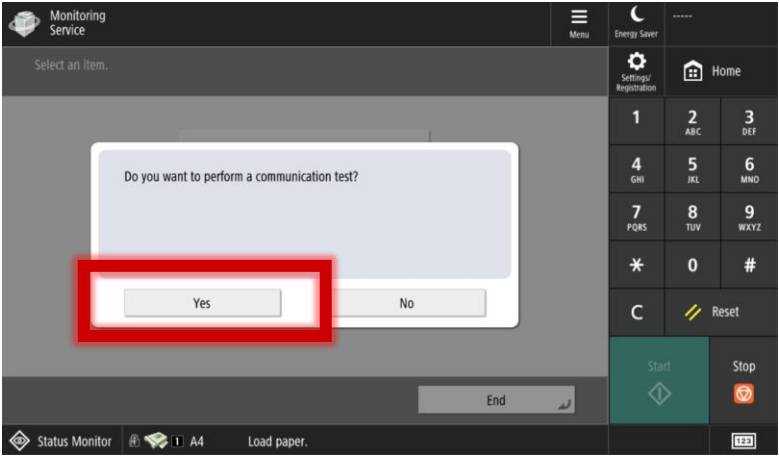
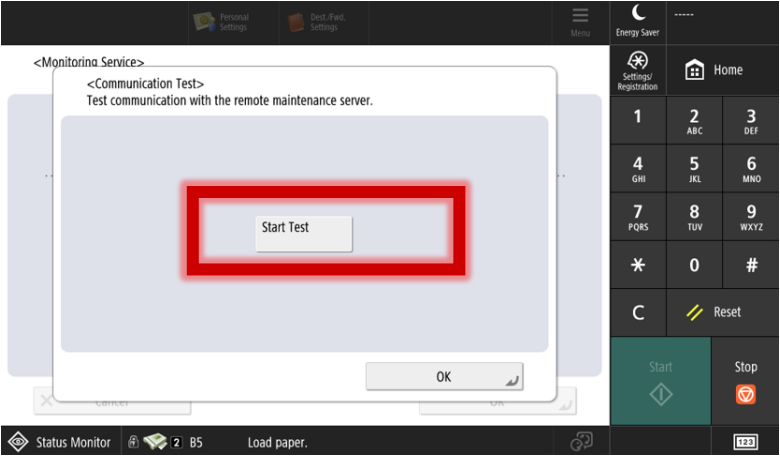
HOW TO PERFORM A COMMUNICATION TEST ON YOUR IMAGERUNNER ADVANCE DX

This guide shows you how to perform a communication test on your Canon ImageRUNNER Advance DX

4

If you get a Start Test Button, please press it and then press Yes to perform your communication test.

On some devices you will not need to do this in which case skip to Step 5

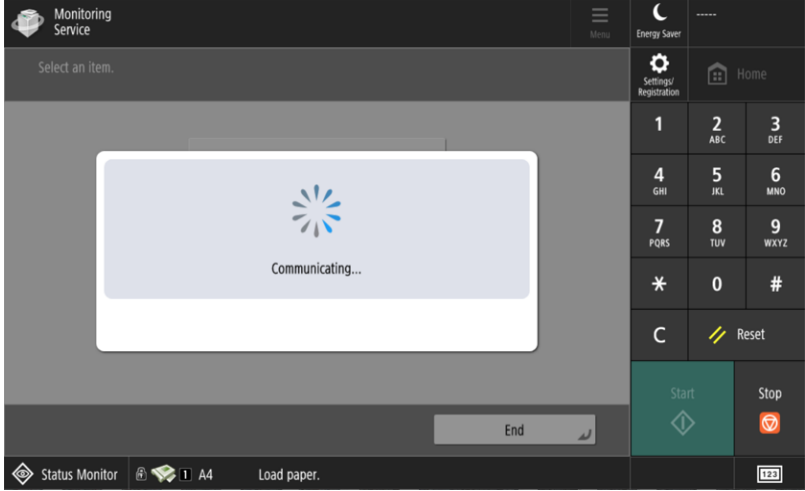
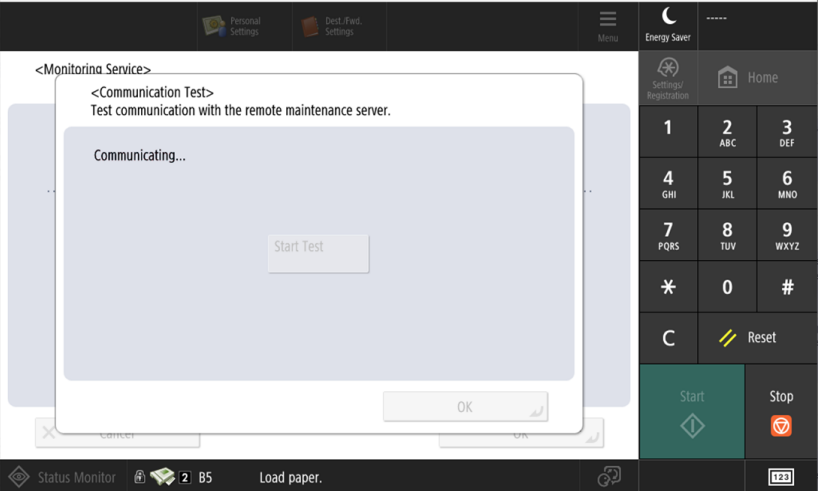


HOW TO PERFORM A COMMUNICATION TEST ON YOUR IMAGERUNNER ADVANCE DX

This guide shows you how to perform a communication test on your Canon ImageRUNNER Advance DX

5

Your communication test will now be performed and whilst this is happening you will get one of the following screens.

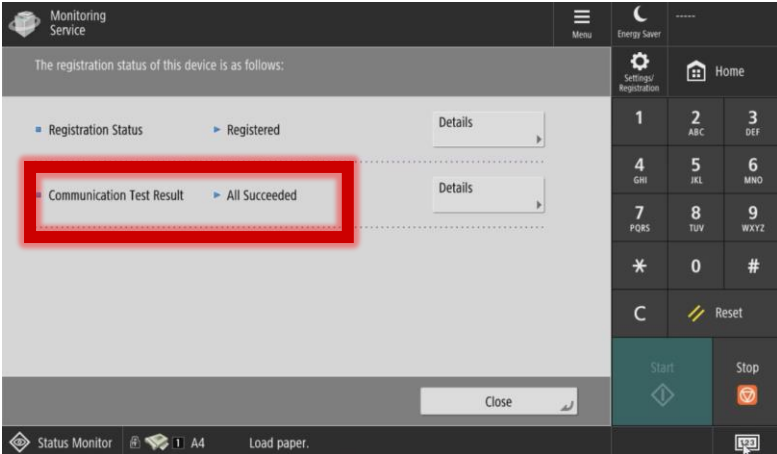
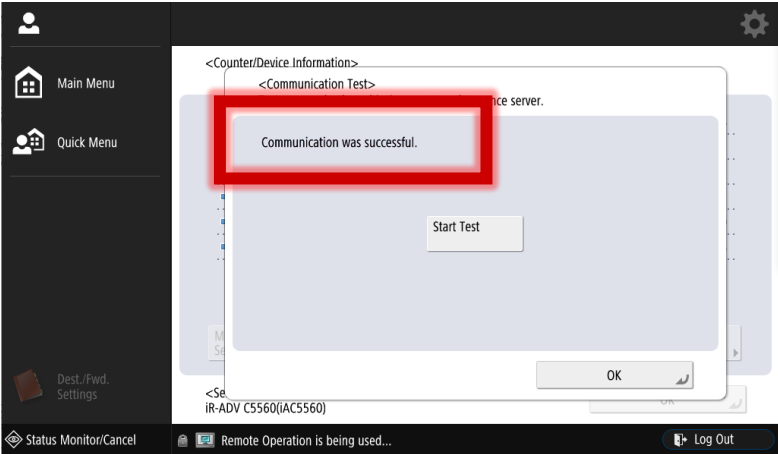


HOW TO PERFORM A COMMUNICATION TEST ON YOUR IMAGERUNNER ADVANCE DX

This guide shows you how to perform a communication test on your Canon ImageRUNNER Advance DX

6

Once the communication test is completed you will get a message saying Communication was Successful \ Communication Test Result > All Succeeded.



HOW TO PERFORM A COMMUNICATION TEST ON YOUR IMAGERUNNER ADVANCE DX

This guide shows you how to perform a communication test on your Canon ImageRUNNER Advance DX

7

If you get any errors, you will need to contact your IT department to ensure that your device is allowed to communicate with Canon.

