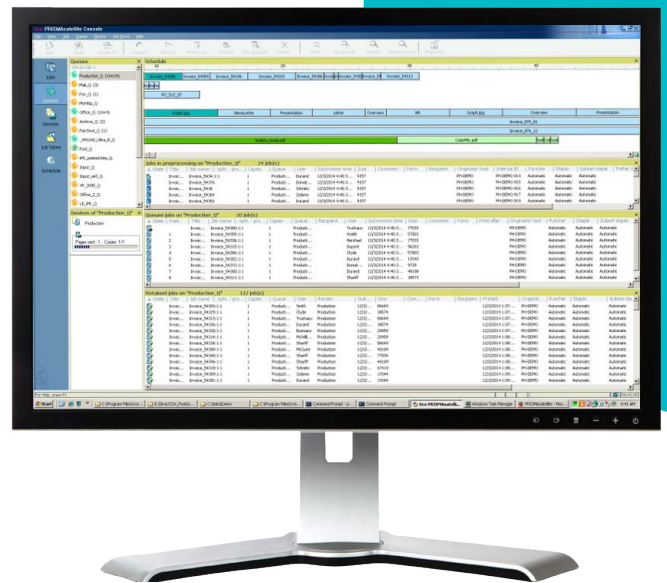


Océ PRISMA satellite

Document spool management system

An intelligent spool management system for ERP, CRD and converging environments, which enables the easy control and management of an entire document output process.



Efficient spooling and scheduling

- Highly productive spooling and scheduling of jobs in ERP, CRD or convergent ERP/CRD environments
- Optimised and automated document production scheduling
- Powerful load balancing
- Schedule alterations can be made at any time to reflect business requirements.
- Jobs can be scheduled in parallel, for printing multiple copies at the same time on different printers
- BestChoice Printing automatically chooses the optimal device to deliver required output in the shortest possible timeframe
- Multi channel output supported with separate queues for print and digital
- Easy reprinting of regular jobs without the need to resubmit job details

Intuitive operator control

- Easily manage jobs, devices and queues with single point of control
- Effectively monitor device status and job progress
- Schedule view clearly shows the load per queue and allows simple task planning
- Simple drag and drop control for easy job redirection
- Easy to use software wizard ensures the most efficient printing of multiple copies on multiple printers
- Dashboard helps to monitor, identify and avoid errors
- Track documents from submitting applications and update client hosts on job progress
- Easily re-run jobs without resubmission from the client host
- Full cost transparency with detailed reporting of accounting information

Océ PRISMA satellite

Effective job processing

- Process documents in different formats from multiple input channels
- Incoming documents are identified on arrival and automatically directed to the right schedule and queue
- Handle documents as a single job or as multiple jobs in parallel for a variety of processing
- Convert, compose or separate documents without modification of existing back-office applications
- Multi-channel output options include paper, e-mail, fax or archive
- Smooth transition from paper to digital output
- Automated sorting and bundling helps save on manual labour costs

Technical Specifications

Submission

Multi channel input LPD, Raw socket, Hot Folder, FTP, SAP (Océ PrintKey), JDF/JMF, command line

Data Line data, PS, PCL, XML, CSV

Delivery

Multi channel output Printer, eMail, Fax, Archive, Output folder

Data PostScript, PCL, PDF

Multiple output Multiple outputs per incoming jobs

Accounting One record per output

Scheduling

Control Input channel, queue, device and job management

Job scheduling FIFO, Priority, custom

Load balancing Round robin, bestchoice printing

Redirection job, device

Processing

Recognition Job properties, metadata

Routing Rule based

Processings split, data conversion, workflow, multiple processings per incoming job

Eform Applications Inspire (GMC), PlanetPress(Objectif Lune), Transform (BottomLine)

PDF/PCL-FormMerge (Océ)

Sort and merge Job store

Monitoring

Console Native, remote

Dashboard Monitor one or more systems running PRISMA satellite

Monitoring agent

Job tracking agent

SNMP agent

Minimum System Requirements

Processor

System Memory

Hard Drive

Ethernet Capability

Display

Input Devices

Software requirements

Operating System

Virtualisation

Data base

Take automatic action on job error

Track modification of job status

Report about input channel, queue and device status

Intel quad core, hyper threading - maximum 4 CPUs

8 GB DDR3 or more

SSD SATA3 or equivalent. 30 GB to install the software and run production; additional space required for customer data

100/1000 Mb/sec

LCD Monitor

Keyboard and Mouse

Windows Server 2003 SP2 Standard Edition (32-bit and x64), 2008 Standard Edition (32-bit and x64), Windows Server 2012 R2

Vmware ESX 4, Vmware ESX 5

MS SQL server Express 2008 R2, MS SQL server Express 2012 R2

Footnotes

^[1] Océ, Océ PRISMA satellite are registered trademarks of Océ-Technologies

^[2] Adobe®, Adobe® PDF and PostScript® 3™ are either registered trademarks or trademarks of Adobe Systems Incorporated in the United States and/or other countries.

^[3] Microsoft and Windows are either registered trademarks or trademarks of Microsoft Corporation in the United States and/or other countries.

All other trademarks are the property of their respective owners.

All specifications subject to change without notice

Canon Inc.
canon.com

Canon Europe
canon-europe.com

UK English edition
© Canon Europa N.V, 2015

Canon (UK) Ltd
Woodhatch
Reigate
Surrey RH2 8BF
Telephone no 01737 220000
Facsimile 01737 220022
canon.co.uk

Canon Ireland
3006 Lake Drive
Citywest, Saggart
Co.Dublin, Ireland
Telephone No: 01 2052400
Facsimile No: 01 2052525
canon.ie