



CANON SOFTWARE SOLUTIONS FOR ARCHITECTURE, ENGINEERING, AND CONSTRUCTION (AEC) WORKFLOWS



imagePROGRAF TZ series



imagePROGRAF TX series



imagePROGRAF TM series



imagePROGRAF TC series

Canon



Whether your business is a small office or a large corporate, we understand that quality, speed and accuracy is essential when it comes to your CAD prints. But it's not just the printer itself that delivers these factors.

For a productive business printing daily CAD images in different sizes and quality, our software can help prevent misprints, create efficient workflows and give you greater control over your costs.

EVERYDAY CHALLENGES OF THE AEC INDUSTRY:



Lack of insight into printing costs, meaning administration and finance departments don't have a total view of company outgoings



Frequent misprints such as accidental crops, sizing issues or lost layers in complex CAD drawings



Time wasted waiting for CAD images to load at the printer and adjusting complex device settings

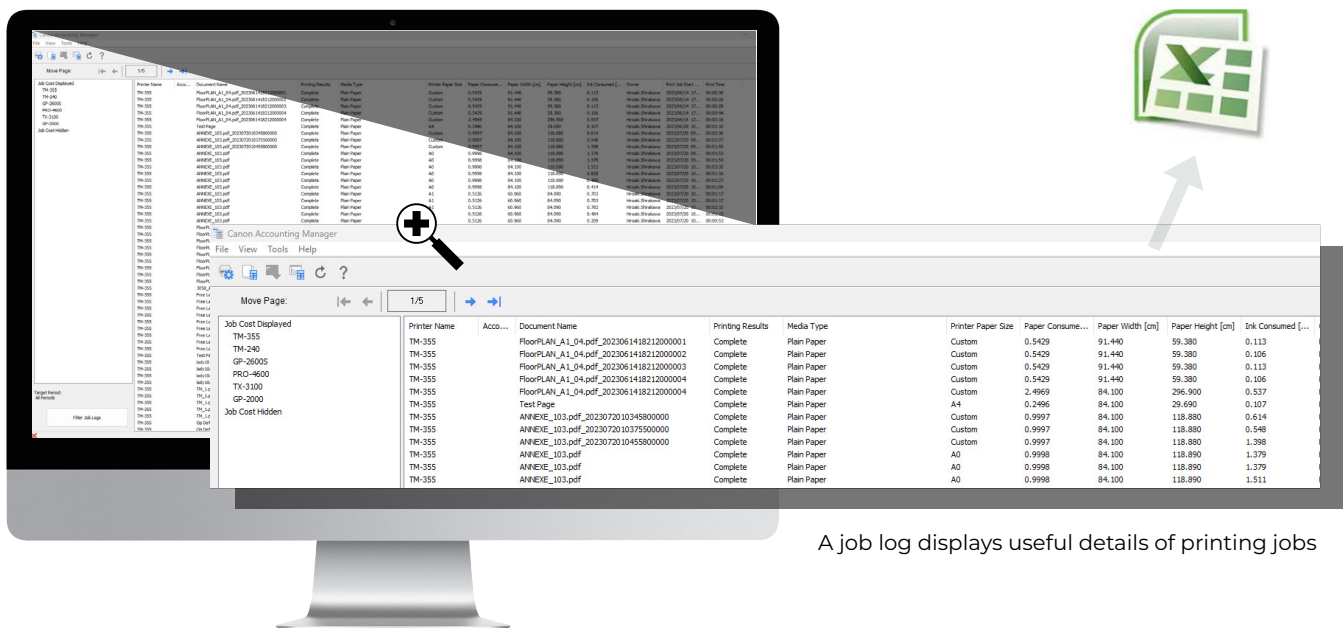


Lack of warning and visibility of printer issues, causing the printer to be inoperative when it is needed

ACCOUNTING MANAGER

Stay on top of print costs with this monitoring software. Accounting Manager connects to your printers and collects detailed information, including the media type and consumption, the ink consumed and date of prints.

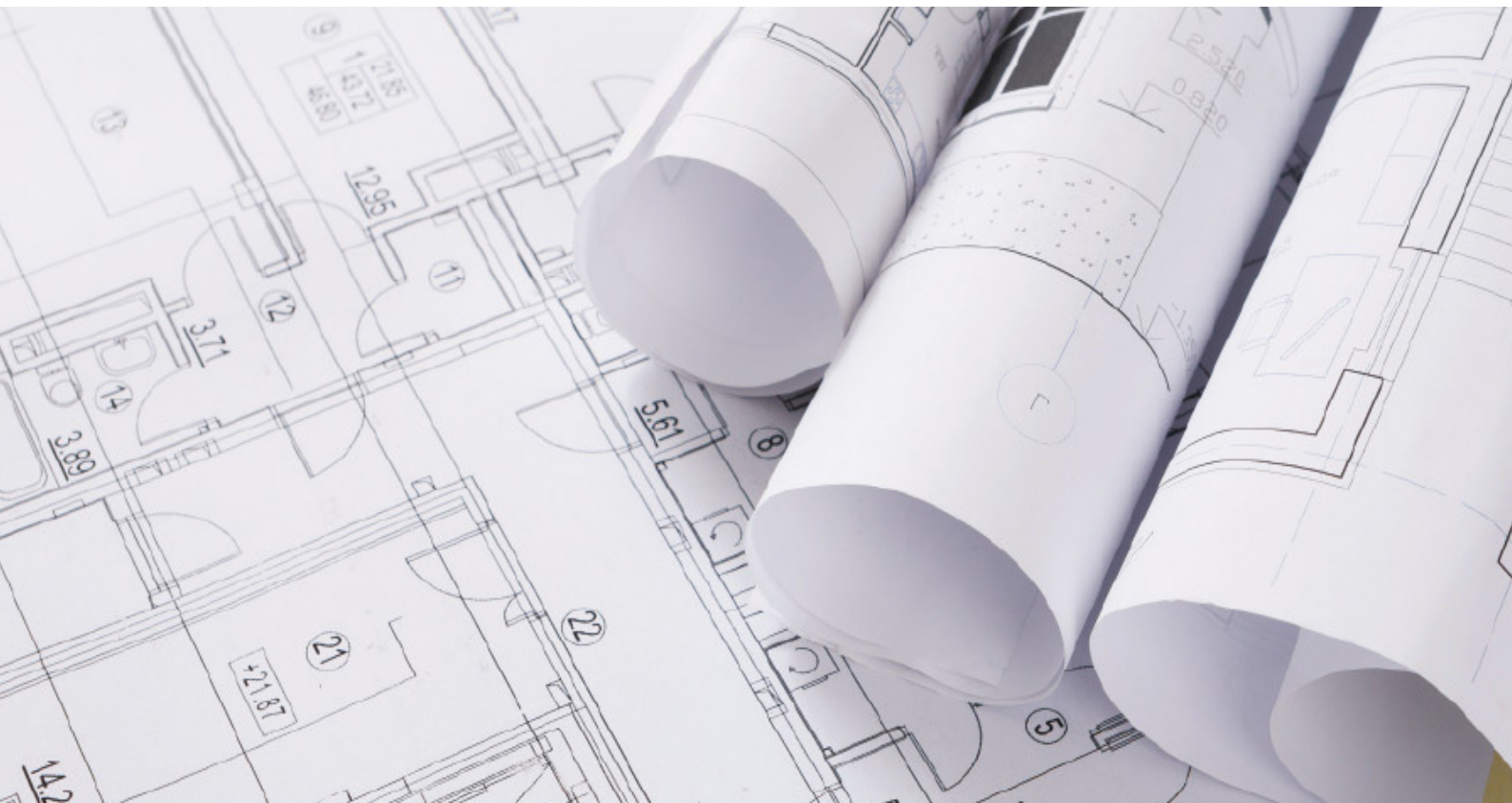
Data is collected in a job log which can be filtered depending on your needs and exported to Excel in CSV format, to make it easier to analyse. The software provides a centralised overview, allowing you to compare users, departments, or devices; up to 50 separate devices can be monitored across your business.



The screenshot displays the Accounting Manager software interface. The main window shows a table of printing jobs. A magnifying glass icon is positioned over the 'Job Cost' column header. To the right of the main window, there is a green icon representing a spreadsheet (Excel) with an arrow pointing towards it, indicating the export functionality.

Job Cost	Printer Name	Document Name	Printing Results	Media Type	Paper Size	Paper Consumption	Paper Width [cm]	Paper Height [cm]	Ink Consumed [ml]
1.50	TM-355	FloorPLAN_A1_04.pdf_2023061418212000001	Complete	Plain Paper	Custom	0.5429	91.440	59.380	0.113
1.50	TM-355	FloorPLAN_A1_04.pdf_2023061418212000002	Complete	Plain Paper	Custom	0.5429	91.440	59.380	0.106
1.50	TM-355	FloorPLAN_A1_04.pdf_2023061418212000003	Complete	Plain Paper	Custom	0.5429	91.440	59.380	0.113
1.50	TM-355	FloorPLAN_A1_04.pdf_2023061418212000004	Complete	Plain Paper	Custom	0.5429	91.440	59.380	0.106
1.50	TM-355	FloorPLAN_A1_04.pdf_2023061418212000004	Complete	Plain Paper	Custom	2.4969	84.100	296.900	0.537
1.50	TM-355	Test Page	Complete	Plain Paper	A4	0.2496	84.100	29.690	0.107
1.50	TM-355	ANNEXE_103.pdf_2023072010345800000	Complete	Plain Paper	Custom	0.9997	84.100	118.890	0.614
1.50	TM-355	ANNEXE_103.pdf_2023072010375900000	Complete	Plain Paper	Custom	0.9997	84.100	118.890	0.549
1.50	TM-355	ANNEXE_103.pdf_2023072010455800000	Complete	Plain Paper	Custom	0.9997	84.100	118.890	1.398
1.50	TM-355	ANNEXE_103.pdf	Complete	Plain Paper	A0	0.9998	84.100	118.890	1.379
1.50	TM-355	ANNEXE_103.pdf	Complete	Plain Paper	A0	0.9998	84.100	118.890	1.379
1.50	TM-355	ANNEXE_103.pdf	Complete	Plain Paper	A0	0.9998	84.100	118.890	1.511

A job log displays useful details of printing jobs

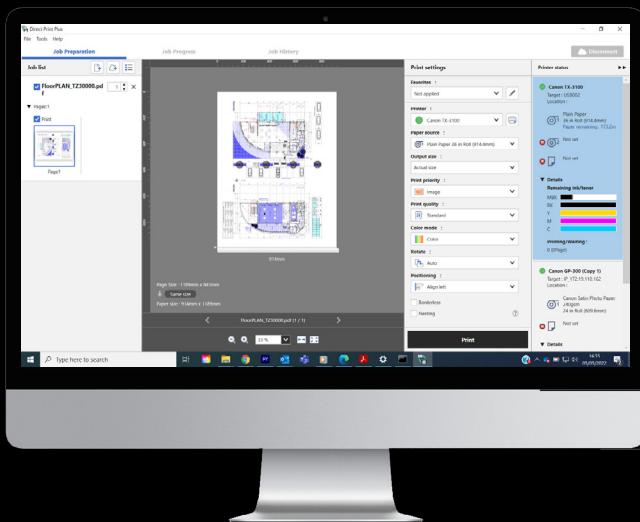


DIRECT PRINT PLUS

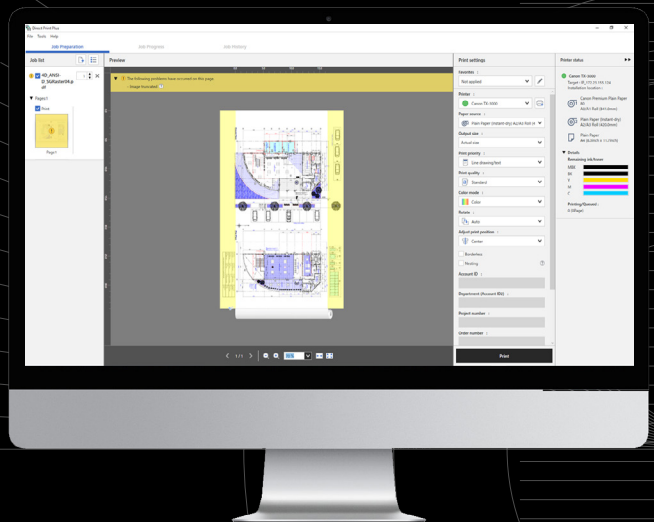
A job submission software, specifically designed for processing CAD files (PDF, JPEG, TIFF, HP-GL/2), to help you save time and prevent wasting paper on misprints.

- ▶ **Fast, accurate processing:** Simply drag and drop CAD files into Direct Print Plus and files are loaded quickly and accurately thanks to newly developed PDF engine by Canon. All layers of your file are transferred, no matter how complex the image.
- ▶ **Avoid misprints:** Use a preview window to get an accurate view of how your print will look, including alerts if images exceed the paper size, allowing you to spot and correct alignment and layout issues before you waste paper.

Preview window for printout preview, print settings and printer status.



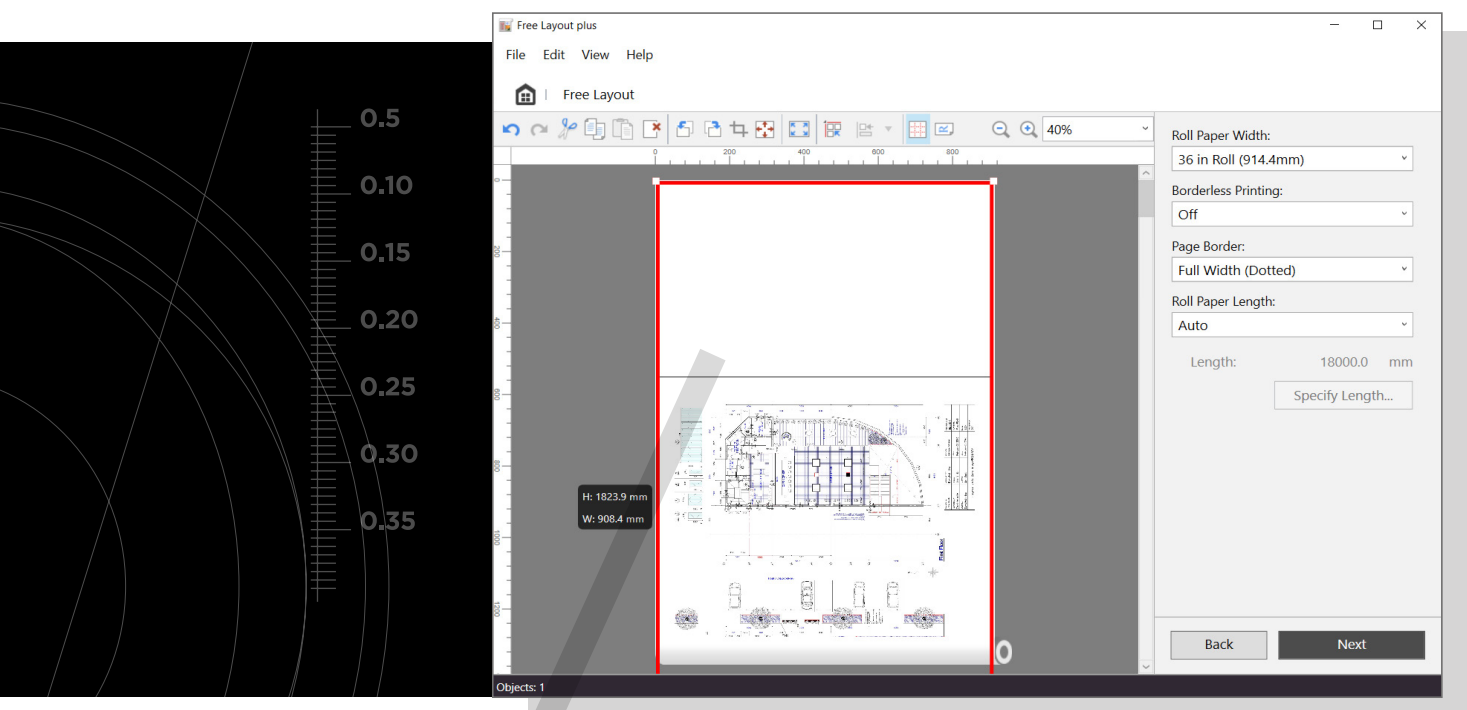
Warnings displayed to eliminate errors in printouts.



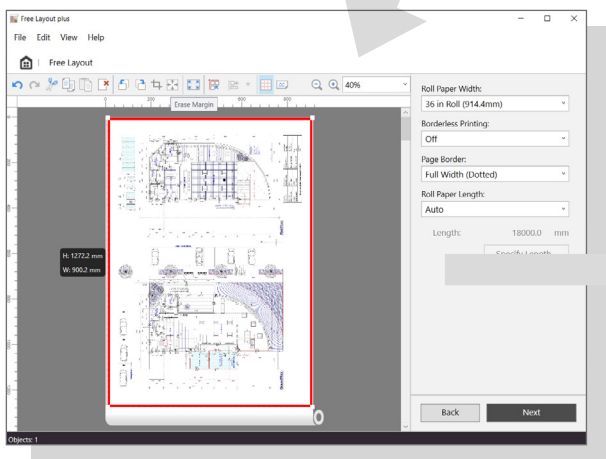
FREE LAYOUT PLUS

Free Layout Plus is an easy-to-use software that lets you fully visualise and control how your prints are arranged on roll paper. Arranging prints on-screen gives you the peace of mind that you won't end up with the wrong sized prints or any accidental cropping.

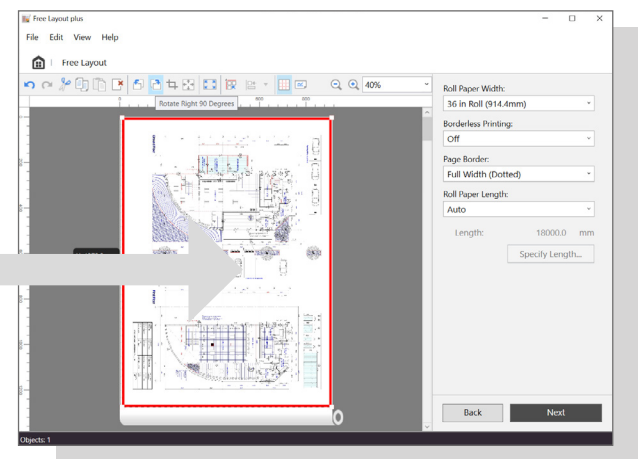
- ▶ **Erase margins:** Click to have your CAD drawings automatically fitted efficiently on the paper, eliminating white space around your image.
- ▶ **Choose your orientation:** Rotate your image so it's best suited for your use. For example, ensuring your title block stays on the top page after it has been through the paper folding machine, making it easier to identify your document.



Occasionally CAD images may not fit well on the roll paper



White space can be eliminated with CAD drawings fitting efficiently



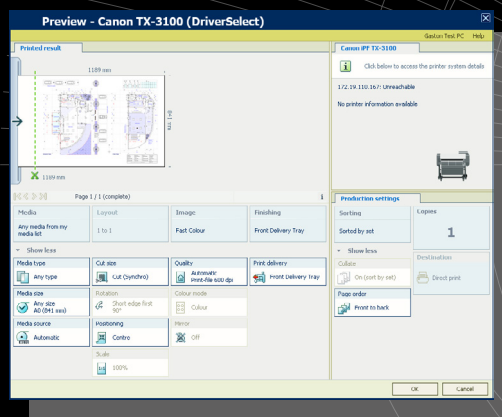
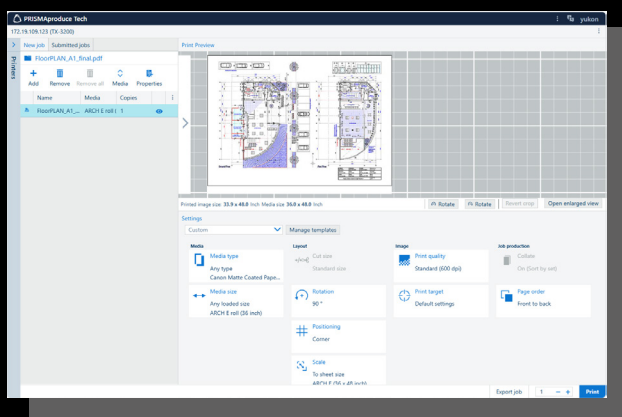
CAD drawings can be rotated to the required orientation

PRISMAproduce TECH AND DRIVER SELECT*

These two pieces of job submission software help to improve the overall efficiency of your print workflows. Normally, setting up your print might take multiple complex steps to adjust separate settings.

With PRISMAproduce Tech and Driver Select this process is simplified, with a simple user interface displaying all print options – from your choice of media to the layout – in one window, to save time on setting up jobs.

Simple user interface displaying all print options



Resolving your challenges

Canon software can help you address and resolve the challenges you face around printing in architecture, engineering or construction environments. With Canon:

- ▶ You have total control and oversight of print costs
- ▶ Complex CAD drawings are loaded instantly to the device and are always printed accurately, avoiding wasted paper
- ▶ You're able to access simple and efficient print workflows



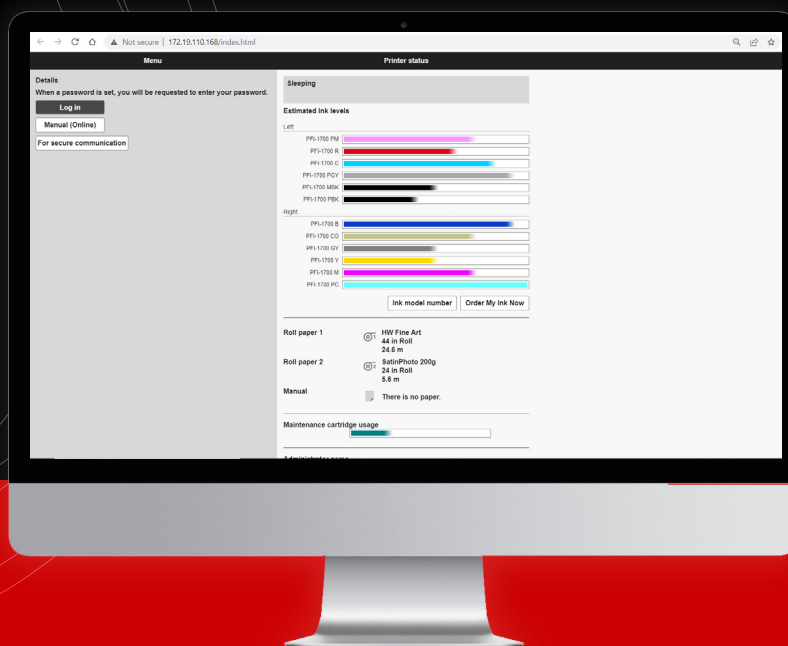
*applicable to imagePROGRAF TZ and TX series

DEVICE MANAGEMENT CONSOLE

This software makes it easier for administrators to remotely monitor and manage their device fleet, all through one platform. Once the Device Management Console is linked with a printer, it collects data on their status, including:

- ▶ Remaining ink volume
- ▶ Media type and remaining volume
- ▶ Maintenance cartridge usage

Even if administrators aren't on-site, they can remotely access a list of any issues or warnings before they impact the functioning of the device, avoiding downtime and delays for users.



The software links with several printers and is able to show the status individually for remote monitoring

Compatible Canon Devices



imagePROGRAF TZ series



imagePROGRAF TX series



imagePROGRAF TM series



imagePROGRAF TC series**

** imagePROGRAF TC series is not compatible with Accounting Manager, PRISMAproduce Tech and Driver Select.



- Talk to your local Canon representative to find out how our software can improve your business, or to get a demo.

Canon

CONTACT

Canon Inc.
Canon.com

Canon Europe
canon-europe.com

English Edition
© Canon Europa N.V. 2025

Canon Europe Ltd
4 Roundwood Avenue
Stockley Park
Uxbridge
UB11 1AF