



LARGE FORMAT FOLDING SERIES

Folding done right

Canon

THERE'S MORE TO FOLDING THAN YOU MIGHT THINK

This is why you need a partner who understands your entire workflow: from preparing and printing your large format documents, right through to folding and getting them ready for immediate use or for archiving.

FOLDERS: AN INTEGRAL PART OF OUR PORTFOLIO

As a one-stop-shop partner, Canon offers and fully supports a complete range of inline and standalone folding solutions. Our technical document printers are developed with folding in mind: as a core component of our portfolio of print workflow solutions. So, you can rely on a printer and folder combination that's both intuitive and reliable.

#1

A FOLDING SOLUTION FOR EVERY NEED

Whatever the size of your business or projects, the Large Format Folding series offers a complete range of fully integrated inline folders as well as standalone devices.

#2

JUST PRINT AND FOLD

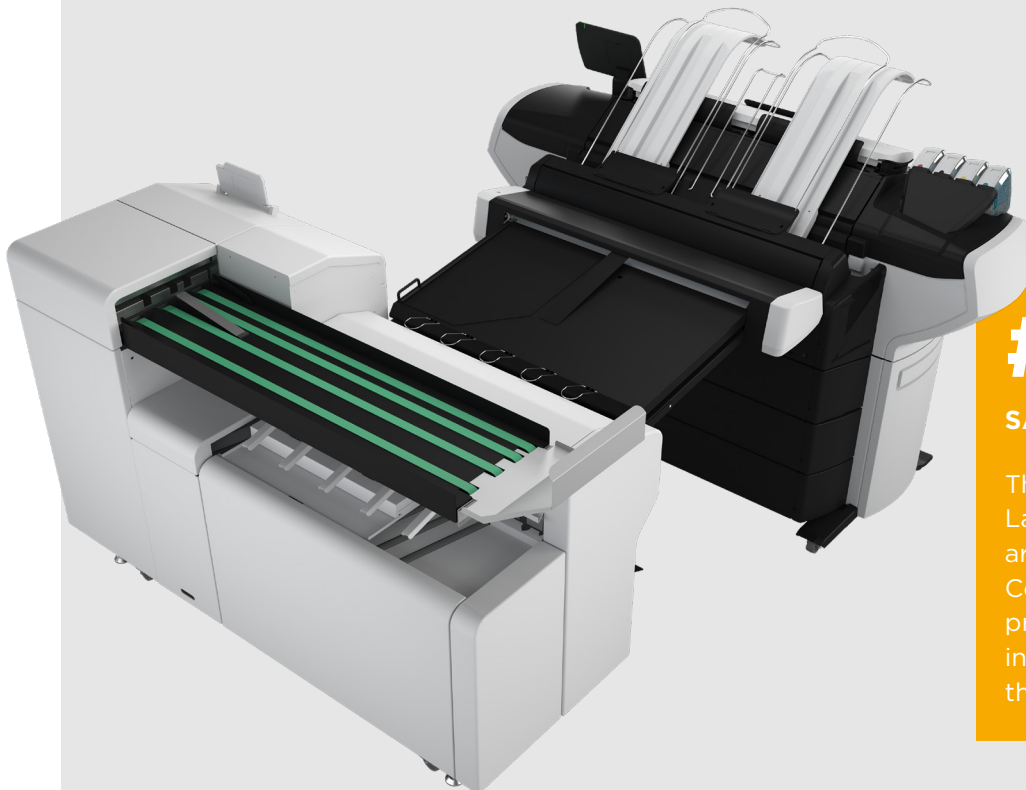
Because we develop our printers with folding in mind, the entire process is logical, and intuitive. So, you can print and fold first time right, every time.

THE RIGHT FOLDING SOLUTION

#3

SAFE INVESTMENT

The integrated folders in the Large Format Folding series are fully compatible with ColorWave and PlotWave printers. Making them a safe investment for use long into the future.



#1

A FOLDING SOLUTION FOR EVERY NEED

Whatever the size of your business or projects, the Large Format Folding series offers a complete range of highly efficient folding solutions.

FOR ALL DOCUMENT SHAPES AND SIZES

The challenge is to prepare neatly folded documents of various shapes and sizes. The Large Format Folding series has the choice of devices you need to fold your documents professionally and efficiently. Whether you want to integrate an inline folder or are looking for an effective standalone device, you can choose from a complete range of high-quality, easy-to-use folding options.

A COMPLETE PORTFOLIO

Choose from entry-level fan-folds to an extensive range of high-volume, full-fold documents, with or without tabs.

Whether you need a compact standalone device or a fully integrated, highly productive inline solution, the Large Format Folding series offers a complete range of options. These also include the choice of manual or automatic feed, or a combination of both.

FOLD PACKAGES

Choose from a myriad of fold packages, including international fold standards such as DIN A, DIN B, DIN C, fan fold, AFNOR, JPN, ANSI, ARCH, Mailer or Ericson.

Produce high-quality folded GIS maps, thanks to the ability to productively achieve even the narrowest of folds.

Prepare fan-folded long plots of unlimited length. Or create your own custom-made fold programs in WebTools Express, and then alter and retain specific folding settings for future use.





#2 JUST PRINT AND FOLD

Optimise workflow efficiency and productivity with fully integrated or standalone folding devices, for reliable, high-quality document folding.

UNINTERRUPTED WORKFLOW

All your documents are automatically folded: quickly and efficiently, without slowing down your workflow. Thanks to the highly productive folding technology and common interface between our printers and folders. You can rely on your inline folders keeping up with the high productivity of your Canon ColorWave and PlotWave printers.

RELIABILITY THANKS TO SEAMLESS INTEGRATION

You need to be able to rely on the quality of your folded documents, without having to check stacks manually. The Large Format Folding series ensures the first document set looks as neat and professional as the last.

CLEARCONNECT

Manage both your printer and your folder workflows from one simple interface. The integrated ClearConnect software has an intuitive, common user interface for all devices, minimising your learning curve and maximising productivity.

Whether you print from a CAD platform, or submit PDFs via job submitter, the result is always the same: neatly and correctly folded documents. Time after time.

SMART FEATURES

ClearConnect includes many smart features, such as:

- What-You-See-Is-What-You-Get' previewing
- Legend placement recommendations
- Automatic legend detection
- Easy-to-access pre-defined folding templates
- Fold template creation tools

EFFICIENT ERROR RECOVERY

Locate and quickly correct any errors, such as unsuitable paper or paper jams. The rapid job recovery and error recovery process between the printer and folder, combined with the clear instructions for users enable you to resume production at the correct fold job or print file straight away. Ensuring, you don't miss prints, or produce more than required.

#3

SAFE INVESTMENT

We develop our printers with folding in mind. As a result, our technical document portfolio represents a safe investment for a long lifetime of performance and reliability.

FULLY SUPPORTED

Canon has a long and successful track record in supplying folding solutions as an integral part of our portfolio. Our sales and service organisations have the necessary expertise to fully support and maintain not only our printers, but also our Large Format Folding series. So, you can rely on the uptime and productivity you need at every stage of your document creation and print process.

BIDIRECTIONAL COMMUNICATION

Components are tuned to work together, with full bidirectional communication between printer, and folder. This significantly reduces waste from incorrectly folded documents and gives clear error tracing to resolve any issues quickly. Which means, you can keep productivity high.

FULLY COMPATIBLE

Folders in the Large Format Folding series are fully compatible with practically all our ColorWave and PlotWave printers. Use your existing folder when you buy a new printer, or continue to use your existing printer when you buy a new folder. This long-term approach to printing and folding represents a safe investment well into the future.

RELIABLE & HIGH QUALITY

All of the devices in the Large Format Folding series use durable, robust components, for a long lifetime of use, with the ability to fold thousands of documents annually. Moreover, you can rely on exceptional results for years on end.

OFFICE COMPANION

Folders in the Large Format Folding series are quiet and low energy consuming. This means they are suitable for use in any office environment.

REDUCE COSTS AND WASTE

Automatic folders, including offline devices, reduce the costs of skilled employees, and save valuable time.



Folder Express 3000

Efficient small-footprint offline folder:

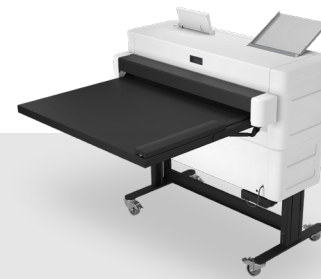
- Position this compact offline folder conveniently anywhere in the office or onsite, for quick and accurate high-quality folding wherever and whenever you need it
- Easy-access and simple interface to produce the fold package you need
- Select your favourite fold templates, for one-click folding



Folder Express 3001

Efficient and flexible small-footprint, entry-level folder for online use or a combination of online and offline:

- Excellent choice if you have a limited budget and lower folding volume
- Easy-access and simple interface to produce the fold package you need
- Select your favourite fold templates on the folder user panel, for offline folding
- Access templates via ClearConnect, for one-click inline folding



Folder Express 3011

Robust compact folder for fully automated inline package folding:

- The first step to fully folding higher volumes
- Fully automated package folding
- Offers the most frequently required folding methods
- Easy-access and simple interface to produce the fold package you need
- With ClearConnect, for one-click folding



WHICH FOLDER IS BEST FOR YOUR BUSINESS?

COMBINE THE RIGHT PRINTER WITH THE RIGHT FOLDER

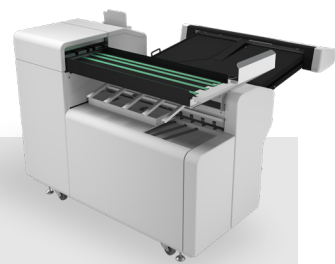
The Large Format Folding series offers flexible fold solutions for print volumes: from small to large, for inline and offline use, with manual and/or automatic input. Our comprehensive portfolio means you can combine the right printer with the right folder.

Here, we highlight just a few of the key features of the various models. The overview table summarises the most important aspects of the different specifications, to help you assess which of our folding solutions best suits your business.

Folder Professional 6011

Comprehensive and robust inline solution offering all the benefits of our other inline folders and more, for highly productive workflows:

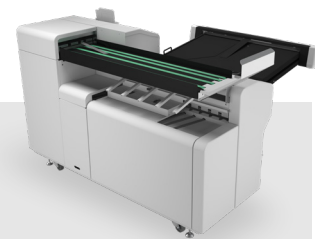
- For the most demanding producers of folded drawings
- With the greatest range of drawings and folding methods
- Large stacking capacity of folded documents on the ergonomically positioned output conveyor belt
- Stacking possibility for unfolded documents
- Handle unfolded originals via manual feed



Folder Professional 6013

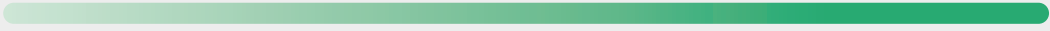
Comprehensive and robust inline solution for highly productive workflows, with the same features as the Folder Professional 6011, plus an integrated tab unit:

- Automatically add tabs/reinforcement strips with precision, for convenient document handling and clear archiving
- End-of-roll warning for the reinforcement strip roll on the printer UI



The Folder Professional 6013 includes an integrated tab unit, for convenient document handling and clear archiving.

SPECIFICATIONS

	Folder Express 3000	Folder Express 3001	Folder Express 3011	Folder Professional 6011	Folder Professional 6013
Manual input	✓	✓ ¹		✓	✓
Automatic input		✓	✓	✓	✓
Automatic fullfold			✓	✓	✓
Unlimited fold	✓	✓		✓*	✓*
Map fold ²	✓*	✓*		✓*	✓*
Reinforcement (or tab) unit					✓
Catch bag for unfolded special media				✓	✓
Stacking of unfolded sheets				✓	✓
Maximum speed [m/min]	30	12	12	18 ³	18 ³
Delivery capacity [A0 packages]	15 ⁴	15	80	150	150
Footprint [m ²]	0.8 ⁵	0.9	1.5	3.0	3.5
Fold Standards	DIN A, DIN B, DIN C, Fan Fold, JPN, ANSI, ARCH, Mailer, AFNOR	DIN A, DIN B, DIN C, Fan Fold, JPN, ANSI, ARCH, Mailer, AFNOR, Ericson	DIN A, DIN B, DIN C, Fan Fold, JPN, ANSI, ARCH, Mailer, Ericson	DIN A, DIN B, DIN C, Fan Fold, JPN, ANSI, ARCH, Mailer, AFNOR, Ericson	DIN A, DIN B, DIN C, Fan Fold, JPN, ANSI, ARCH, Mailer, AFNOR, Ericson
Productivity					

- * Optional
- 1 Folder Express 3001 version with manual feed
- 2 Panel width 100-420 mm
- 3 Optional high speed license
- 4 Including optional second catch tray
- 5 Table folded down

© 2023 Canon Production Printing. Canon is a registered trademark of Canon Inc.. ColorWave and PlotWave are registered trademarks of Canon Production Printing Netherlands B.V. No part of this publication may be copied, modified, reproduced or transmitted in any form or by any means, electronic, manual, or otherwise, without the prior written permission of Canon Production Printing. Illustrations and printer output images are simulated and do not necessarily apply to products and services offered in each local market. The content of this publication should neither be construed as any guarantee or warranty with regard to specific properties or specifications nor of technical performance or suitability for particular applications. The content of this publication may be subject to changes from time to time without notice. Canon Production Printing shall not be liable for any direct, indirect or consequential damages of any nature, or losses or expenses resulting from the use of the contents of this publication.

The Canon logo is displayed in a bold, red, sans-serif font.

Canon Europe
canon-europe.com
English edition

