

# imageRUNNER ADVANCE DX 6700 Series

## IMPROVE BUSINESS EFFICIENCY WITH MONO A3 MULTIFUNCTION DEVICES THAT STREAMLINE WORKFLOWS WITH AUTOMATION AND CLOUD CONNECTIVITY

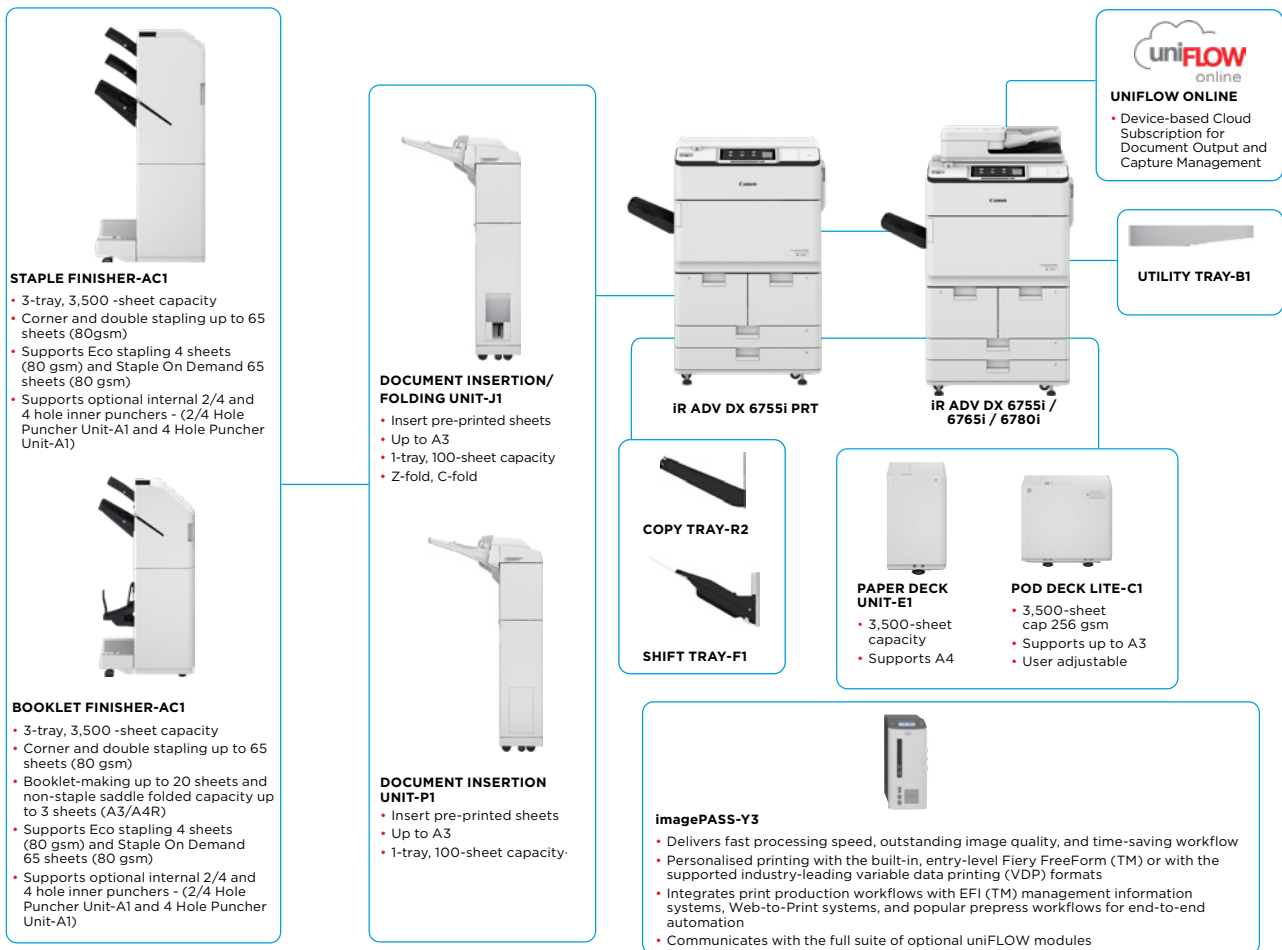
### MAIN CONFIGURATION OPTIONS



Canon uniFLOW Online  
Outstanding Cloud Output/Management Solution



New to the Line



This flat configuration is for illustration purpose only. For a complete list of options and the exact compatibility relationships, please refer to the online [product configurator](#).

The Unified Firmware Platform (UFP) ensures that the latest feature upgrades and protection are available, for an enhanced user experience across the entire iR ADVANCE DX portfolio.



# TECHNICAL SPECIFICATIONS

# imageRUNNER ADVANCE DX 6700 Series

<b>MAIN UNIT</b>	A3 Monochrome Laser Multifunctional	<b>Printing from mobile and cloud</b>	AirPrint, Mopria and Google Cloud Print, Canon PRINT Business, uniFLOW Online
<b>Machine type</b>	Print, Copy*, Scan*, Send*, Store and Optional Fax*		A range of software and MEAP-based solutions are available to provide printing from mobile devices or internet-connected devices and cloud-based services depending on your requirements. Please contact your sales representative for further information
<b>Core functions</b>	*Not available on iR-ADV DX 6755i Printer model		
<b>Processor</b>	1.75GHz Dual Core Processor		
<b>Control Panel</b>	Standard: 10.1" TFT LCD WSVGA Colour Touch panel Optional: 10.4" TFT LCD SVGA Colour Upright Touch panel for MFP Model	<b>Fonts</b>	PS fonts: 136 Roman PCL fonts: 93 Roman, 10 Bitmap fonts, 2 OCR fonts, Andalé Mono WT J/K/S/T <sup>1</sup> (Japanese, Korean, Simplified and Traditional Chinese), Barcode fonts <sup>2</sup>
<b>Memory</b>	Standard: 3.0GB RAM		<sup>1</sup> Optional PCL International Font Set-A1 is required. <sup>2</sup> Optional Barcode Printing Kit-D1 is required.
<b>Hard Disk drive</b>	Standard*: 320GB (available disk space: 250GB), Optional: 250GB, 1TB *A different initial HDD may be used.	<b>Print Features</b>	Secured Print, Secure Watermark, Header/Footer, Page Layout, Two-sided Printing, Mixed Paper Sizes/Orientations, Front/Back Covers, Toner Reduction, Poster Printing, Forced hold printing, Print Date, Scheduled Printing, Printing Using a Virtual Printer
<b>Mirroring Hard Disk Drive</b>	Optional		
<b>Interface Connection</b>	Network Standard: 1000Base-T/100Base-TX/10Base-T, Wireless LAN (IEEE 802.11 b/g/n) Optional: NFC, Bluetooth Low Energy Others Standard: USB 2.0 (Host) x1, USB 3.0 (Host) x1, USB 2.0 (Device) x1; Optional: Serial Interface, Copy Control Interface	<b>Operating System</b>	UFRIL: Windows*7/8.1/10/Server 2008/Server 2008 R2/Server 2012/Server 2012 R2/Server 2016/Server 2019, MAC OS X (10.10 or later) PCL: Windows*7/8.1/10/Server 2008/Server 2008 R2/Server 2012/Server 2012 R2/Server 2016/Server 2019 PS: Windows*7/ 8.1/10/Server 2008/Server 2008 R2/Server 2012/Server 2012 R2/Server 2016/Server 2019, MAC OS X (10.10 or later) PPD: Windows*7/8.1/10, MAC OS X (10.9 or later) McAfee Embedded Control Software As of July, 2019.
<b>Paper Supply Capacity (A4, 80gsm)</b>	Standard: 4 200 sheets 100-sheet Multi-purpose tray x1 550-sheet cassette x 2 1,500-sheet Paper Deck x 2 Maximum: 7,700 sheets (with Paper Deck Unit-E1 or POD Deck Lite-C1)	<b>COPY SPECIFICATIONS</b>	
<b>Paper output capacity (A4, 80gsm)</b>	250 Sheets (with Copy Tray-R2) Maximum: 3,500 Sheets (with Staple Finisher-AC1 or Booklet Finisher-AC1)	<b>Copy Speed</b>	iR-ADV DX 6780i: Up to 80 ppm (A4), up to 40 ppm (A3), up to 58 ppm (A4R), up to 35ppm (A5R) iR-ADV DX 6765i: Up to 65 ppm (A4), up to 32 ppm (A3), up to 47 ppm (A4R), up to 35 ppm (A5R) iR-ADV DX 6755i/6755i PRT: Up to 55 ppm (A4), up to 32 ppm (A3), up to 40 ppm (A4R), up to 35 ppm (A5R)
<b>Finishing capabilities</b>	With options: Collate, Group, Offset, Staple, Saddle Stitch, Hole Punch, Eco Staple, Staple On Demand, Document Insertion, Z-fold, C-fold	<b>First-Copy-Out Time (A4)</b>	iR-ADV DX 6780i: Approx. 3.1 seconds or less iR-ADV DX 6765i: Approx. 3.3 seconds or less iR-ADV DX 6755i/6755i PRT: Approx. 3.3 seconds or less 600x 600
<b>Supported media types</b>	Multi-purpose tray: Thin, Plain, Recycled, Color, Heavy, Bond, Transparency, Label, Pre-punched, Letterhead, Tab, Tracing  Paper Decks (Right/Left): Thin, Plain, Recycled, Color, Heavy, Bond, Pre-punched, Letterhead  Paper Cassettes (Upper/Lower): Thin, Plain, Recycled, Color, Heavy, Bond, Pre-punched, Letterhead, Tab* *Tab Feeding Attachment-B1 is required.	<b>Copy resolution (dpi)</b>	Up to 9,999 copies
<b>Supported media sizes</b>	Multi-purpose tray: Standard size: A3, A4, A4R, A5 <sup>1</sup> , A5R, A6R <sup>2</sup> , B4, B5, B5R Custom size: 100.0 x 148.0 mm to 297.0 x 487.7 mm Free size: 100.0 x 148.0 mm to 297.0 x 487.7 mm *1 Supported media weights: more than 64 gsm *2 Supported media weights: more than 91 gsm	<b>Multiple Copies</b>	Automatic or Manual (9 Levels)
	Paper Decks (Right/Left): Standard size: A4, B5	<b>Copy Density</b>	Variable zoom: 25% to 400% (1% Increments) Preset reduction/enlargement: 25%, 50%, 70%, 100%(1:1), 141%, 200%, 400%
	Paper Cassettes (Upper/ Lower): Standard size: A3, A4, A4R, A5R, B4, B5, B5R Custom size: 139.7 x 182.0 mm to 297 x 487.7 mm	<b>Magnification</b>	Preset R/E Ratios by Area, Two-Sided, Density Adjustment, Original Type Selection, Interrupt Mode, Book to Two Pages, Two-sided Original, Job Build, N on 1, Add Cover, Insert Sheets, Different Size Originals, Page Numbering, Copy Set Numbering, Sharpness, Erase Frame, Secure Watermark, Print Date, Gutter, Print & Check, Negative/Positive, Repeat Images, Merge Job Blocks, Mirror Image, Store in Mail Box, Superimpose Image, Copy ID Card, Skip Blank Pages, Free Size Original, Reserved copy, Copy Sample
<b>Supported media weights</b>	Multi-purpose tray: 52 to 256 gsm Paper Deck(Right/Left): 52 to 220 gsm Paper Cassette(Upper/Lower): 52 to 220 gsm Duplex: 52 to 220 gsm	<b>Copy Features</b>	
<b>Warm-up Time</b>	Quick Start-up Mode: 4 Seconds or less* *Time from device power on to when the copy icon appears and is enabled to operate on the touch panel display  From Sleep Mode: 30 Seconds or Less  From Power On: 30 seconds or less* *Time from device power-on, until copy ready(not print reservation)	<b>SCAN SPECIFICATIONS</b>	
<b>Dimensions (W x D x H)</b>	iR-ADV DX 6780i/6765i/6755i (MFP model): 670 x 770 x 1,185 mm *With optional Upright Control Panel: 1,170 x 770 x 1,252 mm iR-ADV DX 6755i Printer model: 670 x 770 x 1,075 mm	<b>Type</b>	Single-pass Duplexing Automatic Document Feeder [2-sided to 2-sided (Automatic)] *Detect Feeder Multi Sheet Feed is supported.
<b>Installation Space(W x D)</b>	Basic: 1,533 x 1,353 mm (with Multi-purpose tray/upper-right cover open + Front cover open + Copy Tray) Fully configured: 2,436 x 1,353 mm (with POD Deck Lite-C1 + Document Insertion/Folding Unit-J1 + Booklet Finisher-AC1/Staple Finisher-AC1 + Main unit Front cover open)	<b>Document Feeder Paper Capacity (80 gsm)</b>	up to 200 Sheets
<b>Weight</b>	iR-ADV DX 6780i/6765i/6755i: Approx. 219 kg <sup>1</sup> , Approx. 223 kg <sup>2</sup> iR-ADV DX 6755i PRT: Approx. 199kg <sup>3</sup>	<b>Acceptable Originals and weights</b>	Platen: Sheet, Book, and 3-Dimensional Objects Document Feeder media weight: 1-sided scanning: 38 to 220 gsm 2-sided scanning: 38 to 220 gsm *An acceptable weights of A6R or smaller is 50 to 220gsm.
	<sup>1</sup> Including ADF, Flat Touch Panel and the toner bottle. <sup>2</sup> Including ADF, optional Upright touch panel and the toner bottle. <sup>3</sup> Including Flat panel, printer cover and the toner bottle.	<b>Supported media sizes</b>	Platen max. scanning size: up to 297.0 x 431.8 mm Document Feeder media size: A3, A4, A4R, A5, A5R, A6R, B4, B5, B5R, B6R, Custom size: 70.0 x 139.7 mm to 304.8 x 431.8 mm
<b>PRINT SPECIFICATIONS</b>	Including the toner bottle.	<b>Scan Speed (ipm, BW/CL, A4)</b>	1-sided Scanning: 135/135 (300 x 300 dpi, send), 80/80 (600 x 600 dpi, copy) 2-sided Scanning: 270/270 (300 x 300 dpi, send), 160/90 (600 x 600 dpi, copy)
<b>Print Speed</b>	iR-ADV DX 6780i: Up to 80 ppm (A4), up to 40 ppm (A3), up to 58 ppm (A4R), up to 35ppm (A5R) iR-ADV DX 6765i: Up to 65 ppm (A4), up to 32 ppm (A3), up to 47 ppm (A4R), up to 35 ppm (A5R) iR-ADV DX 6755i/6755i PRT: Up to 55 ppm (A4), up to 32 ppm (A3), up to 40 ppm (A4R), up to 35 ppm (A5R)	<b>Scan Resolution (dpi)</b>	Scan for Copy: 600 x 600 Scan for Send: (Push) 600 x 600 (SMB/FTP/WebDAV/IFAX), (Pull) 600 x 600 Scan for Fax: 600 x 600
<b>Print Resolution (dpi)</b>	1,200 x 1,200	<b>Pull Scan Specifications</b>	Colour Network ScanGear2. For both TWAIN and WIA Supported OS: Windows*7/8.1/10/Server 2008/Server 2008 R2/Server 2012/Server 2012 R2/Server 2016
<b>Page description languages</b>	Standard: UFRIL, PCL6, Optional: Adobe®PostScript®3™	<b>Scan Method</b>	Push Scan, Pull Scan, Scan to Box, Scan to Advanced Space, Scan to Network, Scan to USB Memory Key, Scan to Mobile device, Scan to cloud (uniFLOW - Online)
<b>Direct Print</b>	Supported file types: PDF, EPS, TIFF/JPEG, and XPS	<b>SEND SPECIFICATIONS</b>	
		<b>Destination</b>	Standard: E-mail/Internet FAX (SMTP), SMB3.0, FTP, WebDAV, Mail Box Optional: Super G3 FAX, IP Fax
		<b>Address Book</b>	LDAP (2000)/Local (1600)/Speed dial (200)
		<b>Send resolution (dpi)</b>	Push: up to 600 x 600 Pull: up to 600 x 600



# TECHNICAL SPECIFICATIONS

# imageRUNNER ADVANCE DX 6700 Series

<b>Communication protocol</b>	File: FTP(TCP/IP), SMB3.0 (TCP/IP), WebDAV E-mail/Fax: SMTP, POP3	<b>ENVIRONMENTAL SPECIFICATIONS</b>	
<b>File Format</b>	Standard: TIFF, JPEG, PDF(Compact, Searchable, Apply policy, Optimize for Web, PDF/A-1b, Trace & Smooth, Encrypted, Device Signature, User Signature), XPS(Compact, Searchable, Device Signature, User Signature), Office Open XML (PowerPoint, Word)	<b>Operating Environment</b>	Temperature: 10 to 30°C Humidity: 20 to 80 % RH (Relative Humidity)
<b>Universal Send Features</b>	Original Type Selection, Two-sided Original, Book to Two Pages, Different-size Originals, Density Adjustment, Sharpness, Copy Ratio, Erase Frame, Job Build, Delayed Send, Preview, Job Done Notice, File Name, Subject/Message, Reply-to, E-mail Priority, TX Report, Original Content Orientation, Skip Blank Pages	<b>Power Source</b>	220-240V, 50/60Hz, 10A
<b>FAX SPECIFICATIONS</b>		<b>Power consumption</b>	Maximum: Approx. 2,400 W Copying (with DADF continuous scan): Approx. 1,290 W <sup>1</sup> Standby: Approx. 256 W <sup>1</sup> Sleep mode: Approx. 0.9 W <sup>2</sup>
<b>Maximum Number of Connection Lines</b>	2	<b>Typical Electricity Consumption (TEC)*</b>	iR-ADV DX 6780i: 1.61 kWh *As per USA Energy Star 3.0
<b>Modem Speed</b>	Super G3: 33.6 kbps G3: 14.4 kbps	<b>Noise levels</b>	<b>Sound Power Level (LWA,m)</b> Active (1-sided) iR-ADV DX 6780i: 7.3 B, Kv 0.3 B iR-ADV DX 6765i: 7.2 B, Kv 0.3 B iR-ADV DX 6755i/6755i PRT: 7.2 B, Kv 0.3 B *Reference value: measured only one unit with ISO7779, described with ISO9296 (2017)
<b>Compression Method</b>	MH, MR, MMR, JBIG		<b>Sound Pressure (LpAm)</b> Bystander's position: Active (1-sided): iR-ADV DX 6780i: 59 dB* iR-ADV DX 6765i: 58 dB* iR-ADV DX 6755i: 57 dB* iR-ADV DX 6755i PRT: 58 dB* Standby: 37 dB* *Reference value: measured only one unit with ISO7779, described with ISO9296 (2017)
<b>Resolution (dpi)</b>	400x400 (Ultra Fine), 200x400 (Super Fine), 200x200 (Fine), 200x100 (Normal)	<b>CONSUMABLES</b>	
<b>Sending/Receiving Size</b>	Sending: A3, A4, A4R, A5 <sup>1</sup> , A5R <sup>1</sup> , B4, B5 <sup>2</sup> , B5R <sup>1</sup> Receiving: A3, A4, A4R, A5R, B4, B5, B5R <sup>1</sup> Sent as A4 <sup>2</sup> Sent as B4 short	<b>Toner Cartridge</b>	C-EXV 36 Black Toner
<b>FAX memory</b>	Up to 30,000 pages (2,000 jobs)	<b>Toner (Estimated Yield @6% Coverage)</b>	56,000 pages
<b>Speed dials</b>	Max. 200	<b>SOFTWARE AND PRINTER MANAGEMENT</b>	
<b>Group dials/destinations</b>	Max. 199 dials	<b>Tracking and reporting</b>	For detailed information please visit our website <a href="https://www.canon-europe.com/business/">https://www.canon-europe.com/business/</a> Universal Login Manager (ULM) <a href="#">uniFLOW Online Express*</a> *For more information, please refer to uniFLOW Online Express/uniFLOW Online Technical Datasheets
<b>Sequential broadcast</b>	Max. 256 addresses	<b>Remote management tools</b>	iW Management Console eMaintenance Content Delivery System
<b>Memory backup</b>	Yes	<b>Scanning software</b>	Network ScanGear
<b>Fax Features</b>	Sender's Name (TTI), Selecting the Telephone Line (when sending fax), Direct Send, Delayed Send, Preview, Job Done Notice, TX Report, Interrupt Transmission, Sequential Broadcasting, Password/Subaddress Sending, Confidential Mailbox, 2 on 1 Log	<b>Optimisation tools</b>	Canon Driver Configuration Tool NetSpot Device Installer
<b>STORE SPECIFICATIONS</b>		<b>Platform</b>	MEAP (Multifunctional Embedded Application Platform)
<b>Mail Box (Number supported)</b>	100 User Inboxes, 1 Memory RX Inbox, 50 Confidential Fax Inboxes Maximum 30,000 Pages (2,000 jobs) Stored	<b>Document Administration</b>	Kofax Power PDF (Optional)
<b>Advanced Space</b>	Communication Protocol: SMB or WebDAV SUPPORTED CLIENT PC: WINDOWS* 8/1/10 CONCURRENT CONNECTIONS (MAX.): SMB:64, WEBDAV:3	<b>FIERY PRINT CONTROLLER SPECIFICATIONS</b>	
<b>Advanced Space available disc space</b>	Standard:16 GB (With option: max. 480GB.)	<b>Optional/Standard</b>	Optional on all models
<b>Advanced Space Features</b>	Authentication for Advanced Space Log-in, Sort Function, Printing a PDF File with a Password, imageWARE Secure Audit Manager Support, Search, File Preview, Authentication Management, Open to public, URI TX, Backup/Restore	<b>Name</b>	Canon imagePASS-Y3 V1.1 (Server)
<b>SECURITY SPECIFICATIONS</b>		<b>Print Resolution (dpi)</b>	1200 x 1200, 600 x 600
<b>Authentication and Access Control</b>	User Authentication (Picture Login, Picture and PIN Login, Card Login, Username and Password Login, Function Level Login, Mobile Login), Department ID Authentication (Department ID and PIN Login, Function Level Login), uniFLOW Online Express (PIN Login, Picture Login, Picture and PIN Login, Card Login, Card and PIN Login, Username and Password Login, Department ID and PIN Login, Function Level Login), Access Management System (Access Control)	<b>Page Description Language(s)</b>	PCL6, Adobe PostScript 3
<b>Document Security</b>	Print Security (Secure Print, Encrypted Secure Print, Forced Hold Printing, uniFLOW Secure Print*), Receive Data Security (Confidential Fax Inbox Forwarding Received Documents Automatically), Scan Security (Encrypted PDF, Device Signature PDF/XPS, User Signature PDF/XPS, Adobe LiveCycle® Rights Management ES2.5 Integration), BOX Security (Mail Box Password Protected, Advanced Space Access Control), Send Data Security (Setting for requesting password input per transmission, Restricted E-mail/File send functions, Confirming FAX number, Allow/Restrict Fax Driver Transmissions, Allow/Restrict Sending from History, S/MIME Support), Document Tracking (Secure Watermark) <sup>1</sup> Requires uniFLOW Online / uniFLOW	<b>Memory</b>	8GB (2 x4GB)
<b>Network Security</b>	TLS 1.3, IPsec, IEEE802.1X authentication, SNMP V3.0, Firewall Functionality (IP/MAC Address Filtering), Dual Network Support (Wired LAN/Wireless LAN, Wired LAN/Wired LAN), Disabling Unused Functions (Enabling/Disabling Protocols/Applications, Enabling/Disabling Remote UI, Enabling/Disabling USB Interface), Communication Line Separation (G3 FAX, USB Port, Advanced Space, Scan and Send -Virus Concerns for E-mail Reception)	<b>Hard Disk Drive</b>	500 GB SATA
<b>Device Security</b>	Protecting HDD Data (HDD Data Encryption (FIPS140-2 Validated), HDD Data Overwrite Erase, HDD Lock), Standard HDD Initialize, Trusted Platform Module (TPM), Job Log Conceal Function, Protecting MFD Software Integrity, Checking MFD Software Integrity (Verify System at Startup, Runtime Intrusion Detection), Comply IEEE2600.2 (Common Criteria Certification) (TBD)	<b>Processor Speed</b>	Intel Pentium G4400 (3.3GHz)
<b>Device Management and Auditing</b>	Administrator Password, Digital Certificate And Key Management, Audit Log, Cooperating with External Security Audit System (Security Information and Event Management), Image Data Logging, Security Policy Setting	<b>System</b>	FS350 Pro
		<b>Fonts</b>	PS: 138 Fonts PCL: 113 Fonts
		<b>Supported Operating Systems</b>	Windows 7 64 bit/Windows 8.1 64 bit/Windows 10 64 bit/Windows Server 2008 R2 64bit only/Windows Server 2012 64bit only (Only Printer driver support)/Windows Server 2012 R2 64bit only/Windows Server 2016 R2 64 bit only, MAC OS (10.11, 10.12, 10.13, 10.14)
		<b>Interface</b>	2 x Ethernet (1000Base-T/100Base-TX/10Base-T), USB 3.0 x 2 (rear), x 3 (front on Fiery Quick Touch TM), USB 2.0 x 4 (rear)
		<b>Network protocols</b>	TCP/IP (FTP, SMTP, POP, HTTP, SNMP, LDAP, SLP, SMB, LPD, IPP, WS-Discovery, Bonjour, Direct Mobile Printing, Port9100, SNT, 802.1X, DHCP, DNS, NTP)
		<b>Direct Print VDP</b>	PDF1.7, EPS, TIFF6, JDF1.4/JMF (Optional)
		<b>Fiery Print Controller Standard Features</b>	FreeForm v1, v2.1, PPML, PDF/VT-1, PDF/VT-2, Creo VPS
		<b>Fiery Print Controller Options</b>	Fiery Command WorkStation/Paper Catalog, Fiery Remote Scan/Fiery Hot Folders & Virtual Printers/Fiery JDF
		<b>HW Platform</b>	Fiery Impose/Fiery Compose/Fiery Impose and Compose/Removable HDD kit/ Fiery Image Viewer
		<b>BASE OS</b>	NX One
		<b>Power source</b>	Windows 10 IoT Enterprise 2019 LTSC
		<b>Maximum Power consumption</b>	AC100-240V, 50Hz/60Hz, 3.0A (100V) - 1.5A (240V) 53 W
		<b>DIMENSIONS (W X D X H)</b>	203 x 248 x 384 mm
		<b>Weight</b>	Server unit only: Approx. 5.9kg



# TECHNICAL SPECIFICATIONS

# imageRUNNER ADVANCE DX 6700 Series

## PAPER SUPPLY OPTIONS

### Paper Deck Unit-E1

Paper Capacity: 3,500 sheets (80 gsm)  
 Paper Type: Thin, Plain, Recycled, Color, Heavy, Bond, Pre-punched, Letterhead  
 Paper Size: A4, B5  
 Paper Weight: 52 to 256 gsm  
 Power Source: From the Main Unit  
 Dimensions (W x D x H): 340 x 630 x 572 mm (attached to the main unit)  
 Weight: Approx. 34 kg

### POD Deck Lite-C1

Paper Capacity: 3,500 sheets (80 gsm)  
 Paper Type: Thin, Plain, Recycled, Color, Heavy, Tracing, Bond, Transparency, Label, Pre-punched, Letterhead, Tab  
 Paper Size: A3, A4, A4R, B4, A5R, B5, B5R, Custom size: 139.7 x 182.0 mm to 297.0 to 487.7 mm  
 Paper Weight: 52 to 256 gsm  
 Power Source: 220-240V, 50/60Hz, 1.2A  
 Dimensions (W x D x H): 633 x 686 x 574 mm (attached to the main unit)  
 Weight: Approx. 68 kg

## OUTPUT OPTIONS\*

### Copy Tray-R2

\*Paper capacity may vary with different of paper type/size.  
 Provides a simple tray for basic output needs.  
 Capacity: 250/100 sheets (1-sided/2-sided, 80 gsm)  
 Dimensions (W x D x H): 420 x 382 x 175 mm

### Staple Finisher-AC1

Tray Capacity (with 80gsm paper):  
 Upper Tray: A4, A5, A5R, A6R, B5: 250 sheets  
 A3, A4R, B4, B5R: 125 sheets  
 Mid Tray: Same as upper tray  
 Lower Tray: A4, A5, A5R, B5: 3,000 sheets  
 A3, A4R, B4, B5R: 1,500 sheets  
 A6R: 250 sheets  
 Paper Weight: 52 to 256 gsm  
 Staple Position: Corner, Double  
 Staple Capacity:  
 A4, B5: 65 sheets (52 to 90 gsm)  
 A3, A4R, B4: 40 sheets (52 to 90 gsm)  
 Eco Staple: A3, A4  
 5 sheets (52 to 64 gsm)  
 4 sheets (65 to 81.4 gsm)  
 3 sheets (82 to 105 gsm)  
 Staple On Demand: 65 sheets  
 Power supply: From the main unit  
 Dimensions (W x D x H): 656 x 623 x 1,195 mm (when the extension tray and rotary tray are extended)  
 Weight: Approx. 36 kg

### Booklet Finisher-AC1

(Includes the above Staple Finisher-AC1 basic staple specifications.)  
 Saddle Stitch paper size: A3, A4R, B4, Custom Size (195.0 x 270.0 mm to 297.0 x 431.8 mm)  
 Saddle Stitch Staple Capacity: 20 sheets x 10 sets (52 to 81.4 gsm) (including 1 cover sheet up to 256 gsm)  
 Non Staple Folded Bunch Capacity: 3 sheets (52 to 105 gsm)  
 Power supply: From the main unit  
 Dimensions (W x D x H): 656 x 623 x 1,195 mm (when the extension tray and rotary tray are extended)  
 Weight: Approx. 60 kg

### 2/4 HOLE PUNCHER UNIT-A1

(Requires either the Staple Finisher-AC1 or Booklet Finisher-AC1)  
 Two or Four Holes  
 Acceptable Punch Paper Weight: 52 to 256 gsm  
 Acceptable Punch Paper Size:  
 Two holes A3, A4, A4R, A5, B4, B5, B5R  
 Four holes A3, A4  
 Power Source: From the finisher

### 4 Hole Puncher Unit-A1

(Requires either the Staple Finisher-AC1 or Booklet Finisher-AC1)  
 Four Holes  
 Acceptable Punch Paper Weight: 52 to 256 gsm  
 Acceptable Punch Paper Size:  
 Four holes A3, A4, A4R, A5, B4, B5, B5R  
 Power Source: From the finisher

## Document Insertion Unit-P1

(Requires either the Staple Finisher-AC1 or Booklet Finisher-AC1)  
 Number of trays: 1  
 Tray Capacity: 100 Sheets (with 80 gsm paper)  
 Acceptable Paper Type: Thin, Plain, Recycled, Color, Heavy, Coated, Bond, Letterhead, Tab  
 Acceptable Paper Sizes: A3, A4, A4R, B4, B5, B5R  
 Acceptable Paper Weight: 60 to 256 gsm  
 Power Source: 100-240V, 50/60Hz, 1.0A  
 Dimensions (W x D x H): 247 x 679 x 1,242 mm (attached to the device: width excluding document tray)  
 Weight: Approx. 40 kg

## Document Insertion / Folding Unit-J1

(Requires either the Staple Finisher-AC1 or Booklet Finisher-AC1)  
 Number of trays: 1  
 Supported Folding Type: Z-Fold, C-Fold  
 Acceptable Paper Type:  
 Insertion Unit: Thin, Plain, Recycled, Color, Heavy, Coated, Bond, Letterhead, Tab  
 Z-Fold/C-Fold: Thin, Plain, Recycled, Color  
 Acceptable Paper Sizes:  
 Insertion Unit: A3, A4, A4R, B4, B5, B5R  
 Z-Fold: A3, A4R, B4  
 C-Fold: A4R  
 Acceptable Paper Weight:  
 Insertion Unit: 60 to 256 gsm  
 Z-Fold/C-Fold: 60 to 105 gsm  
 Output Capacity (with 80 gsm paper):  
 Insertion: 100 Sheets  
 Z-Fold\*: A3, B4: 30 sheets (80 gsm)  
 A4R: 10 sheets  
 C-fold: A4R: 40 sheets (80 gsm)  
 \*Z-Fold output to the Staple Finisher-AC1 or Booklet Finisher-AC1  
 Power Source: 100-240V, 50/60Hz, 1.0A  
 Dimensions (W x D x H): 247 x 679 x 1,242 mm (attached to the device: width excluding document tray)  
 Weight: Approx. 76 kg

## HARDWARE ACCESSORIES

### Card Readers

Various card readers available e.g. MiCard Plus.  
 Please contact local Canon Office for more details.  
 Copy Card Reader-F1  
 Copy Card Reader Attachment-A4

### Others

Upright Control Panel-J1  
 Utility Tray-B1  
 Tab Feeding Attachment Kit-B1  
 Shift Tray-F1  
 Numeric Keypad-A1  
 Finisher Jogger Kit-A1

## SECURITY OPTIONS

### Data security

2.5inch/250GB HDD-N1  
 2.5inch/1TB HDD-P1  
 HDD Mirroring Kit-J1

## SYSTEM AND CONTROLLER OPTIONS

### Print Accessories

PCL International Font Set-A1  
 PS Printer Kit-BC1

### Barcode Printing

Barcode Printing Kit-D1

### Efi-Fiery Based Controller

imagePASS-Y3 V1.1

### Efi-Fiery Based Controller Options

Fiery Impose  
 Fiery Compose  
 Fiery Impose and Compose  
 Fiery ImageViewer  
 Removable HDD Kit-B6

### System Accessories

Serial Interface Kit-K3  
 NFC Kit-E1  
 Copy Control Interface Kit-A1  
 Connection Kit-A2 for Bluetooth LE

### Fax Accessories

Super G3 FAX Board-AS1  
 Super G3 2nd Line Fax Board-AS1  
 Remote Fax Kit-A1  
 IP FAX Expansion Kit-B1

## OTHER OPTIONS

### Accessibility Accessories

ADF Access Handle-A1  
 Voice Guidance Kit-G1  
 Voice Operation Kit-D1

### Staple Cartridge

Staple Cartridge-X1  
 Staple Cartridge-Y1

## Software & Solutions



## Certifications and compatibility



Canon Inc.  
 canon.com

Canon Europe  
 canon-europe.com

English edition

© Canon Europa N.V., 2020