

# imageRUNNER ADVANCE DX C3800 Series

## SMART COLOUR A3 MULTIFUNCTION DEVICES FOR EFFICIENT, HIGH-QUALITY DOCUMENT PROCESSING



Canon uniFLOW Online  
Outstanding Cloud Output Management Solution

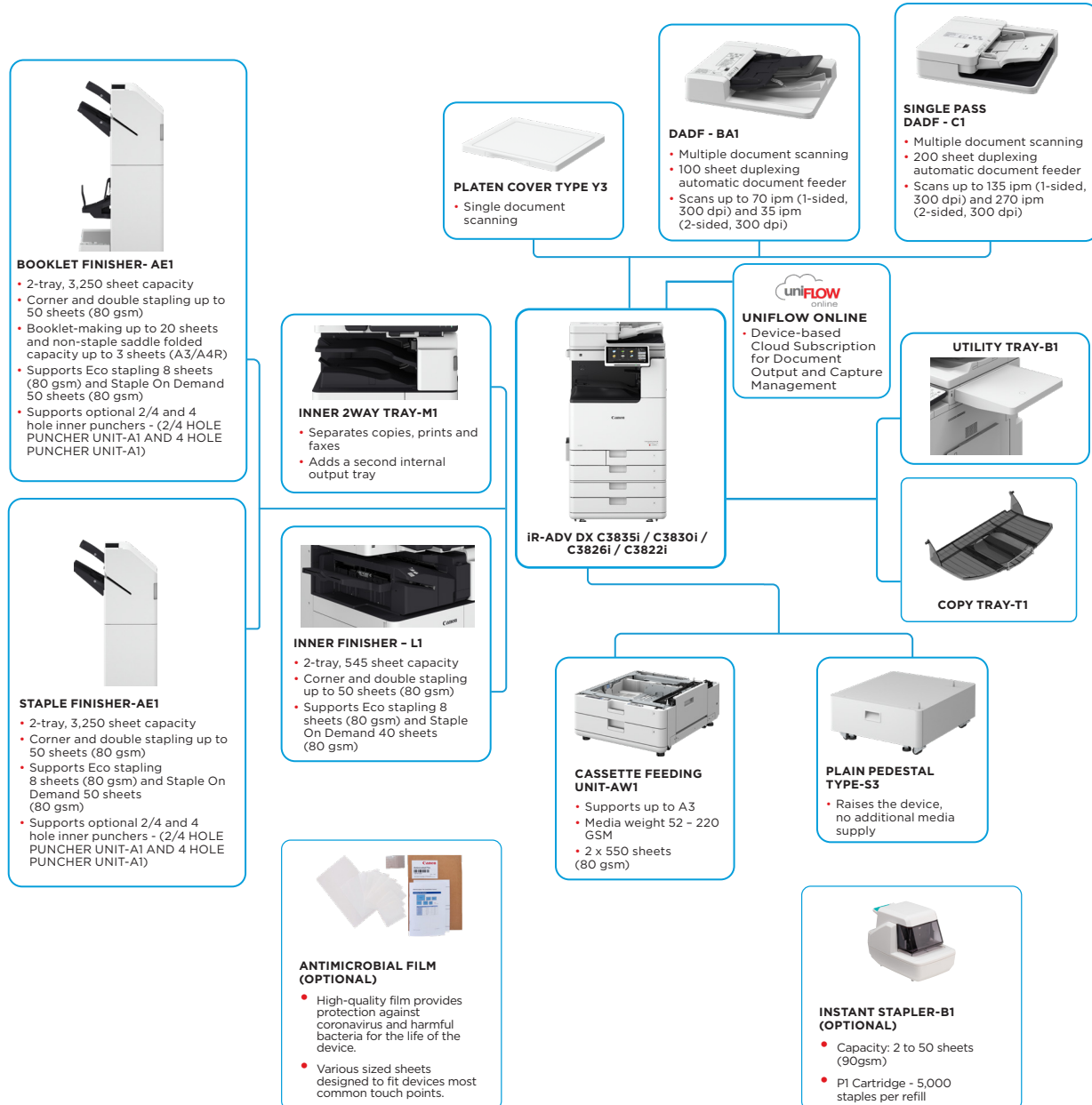


Canon uniFLOW Online  
Outstanding Cloud Output Management Solution



New to the Line

### MAIN CONFIGURATION OPTIONS



This flat configuration is for illustration purpose only. For a complete list of options and the exact compatibility relationships, please refer to the online [product configurator](#).

The Unified Firmware Platform (UFP) ensures that the latest feature upgrades and protection are available, for an enhanced user experience across the entire iR ADVANCE DX portfolio.



# TECHNICAL SPECIFICATIONS

# imageRUNNER ADVANCE DX C3800 Series

## MAIN UNIT

<b>Machine type</b>	A3 Color Laser Multifunctional
<b>Core functions</b>	Print, Copy, Scan, Send, Store and Optional Fax
<b>Processor</b>	1.8GHz Dual Core Processor
<b>Control Panel</b>	10.1" TFT LCD WSVGA Color Touch panel
<b>Memory</b>	Standard: RAM 3.5GB Main CPU Side: 2GB Image Processing CPU Side: 1GB + 0.5GB (reserved for image processing)
<b>Storage</b>	Standard: (SSD) 256 GB Optional: (SSD) 1TB
<b>Interface Connection</b>	NETWORK Standard: 1000Base-T/100Base-TX/10Base-T, Wireless LAN (IEEE 802.11 b/g/n) Optional: NFC, Bluetooth Low Energy OTHERS Standard: USB 2.0 (Host) x1, USB 3.0 (Host) x1, USB 2.0 (Device) x1; Optional: Serial Interface, Copy Control Interface

<b>Paper Supply Capacity (A4, 80gsm)</b>	Standard: 1,200 sheets 100-sheet Multi-purpose tray 550-sheet Paper cassette x 2 Maximum: 2,300 sheets (with Cassette Feeding Unit-AW1)
<b>Paper output capacity (A4, 80gsm)</b>	Standard: 250 sheets Maximum: 3,450 sheets (with Staple Finisher-AE1 or Booklet Finisher-AE1 and Copy Tray-T1)
<b>Finishing capabilities</b>	Collate, Group, Offset, Staple, Saddle Stitch, Hole Punch, Eco Staple, Staple On Demand * Finishing capabilities vary depending on the options connected.
<b>Supported media types</b>	Multi-purpose tray: Thin, Plain, Heavy*, Recycled, Coated*, Color, Tracing, Bond, Transparency, Label, Pre-punched, Letterhead, Envelope * SRA3 is unsupported for Coated (257-300gsm) and Heavy (257-300gsm) paper. Upper Cassette: Thin, Plain, Heavy, Recycled, Color, Bond, Transparency, Pre-punched, Letterhead, Envelope Lower Cassette: Thin, Plain, Heavy, Recycled, Color, Bond, Transparency, Pre-punched, Letterhead, Envelope* * Envelope Feeder Attachment A (standard) is required.

<b>Supported media sizes</b>	Multi-purpose tray: Standard size: SRA3, A3, A4, A4R, A5, A5R, A6R, B4, B5, B5R Custom size: 98.4 x 139.7 mm to 320.0 x 457.2 mm Free size: 100.0 x 148.0 mm to 304.8 x 457.2 mm Envelopes: COM10 No.10, Monarch, ISO-C5, DL Envelope custom size: 98.0 x 98.0 mm to 320.0 x 457.2 mm Upper Cassette: Standard size: A4, A5, A5R, A6R, B5 Custom Size: 105.0 x 148.0 mm to 297.0 x 215.9 mm Envelopes: ISO-C5 Lower Cassette: Standard size: A3, A4, A4R, A5, A5R, A6R, B4, B5, B5R Custom Size: 105.0 x 148.0 mm to 304.8 x 457.2 mm Envelopes*: COM10 No.10, Monarch, DL * Envelope Attachment A (standard) is required.
<b>Supported media weights</b>	Multi-purpose tray: 52 to 300 gsm* * SRA3 is unsupported for Coated (257-300gsm) and Heavy (257-300gsm) paper. Upper/Lower Cassette: 52 to 256 gsm Duplex: 52 to 220 gsm
<b>Warm-up Time</b>	Quick Startup Mode: 4 seconds or less* * Time from device power-on to when the copy icon appears and is enabled to operate on the touch panel display. From Sleep Mode: 10 seconds or Less From Power On: 10 seconds or less* * Time from device power-on, until copy ready (not print reservation)

<b>Dimensions (W x D x H)</b>	With Platen Cover-Y3: 565 x 692 x 788 mm With Single Pass DADF-C1: 565 x 722 x 897 mm With DADF-BA1: 565 x 719 x 891 mm
<b>Installation Space (W x D)</b>	Basic: 978 x 1,119 mm (with Single Pass DADF-C1 + right cover open + Multi-purpose tray extension extended + paper cassette open) 978 x 1,116 mm (with DADF-BA1 + right cover open + Multi-purpose tray extension extended + Paper cassette open) Fully Configured: 1,651 x 1,119 mm (with Single Pass DADF-C1 + Staple Finisher-AE1/Booklet Finisher-AE1 + Copy Tray-T1 extension extended + paper cassette open) 1,651 x 1,116 mm (with DADF-BA1 + Staple Finisher-AE1/Booklet Finisher-AE1 + Copy Tray-T1 extension extended + paper cassette open)
<b>Weight*</b> *including toner	With Platen Cover-Y3: Approx. 71 kg With DADF-BA1: Approx. 78 kg With Single Pass DADF-C1: Approx. 84 kg

<b>PRINT SPECIFICATIONS</b>	
<b>Print Speed (BW and CL)</b>	iR-ADV DX C3835i: 1-sided: Up to 35 ppm (A4, A5, A5R, A6R), Up to 17 ppm (A3), Up to 23 ppm (A4R) iR-ADV DX C3830i: 1-sided: Up to 30 ppm (A4, A5, A5R, A6R), Up to 15 ppm (A3), Up to 20 ppm (A4R) iR-ADV DX C3826i: 1-sided: Up to 26 ppm (A4, A5, A5R, A6R), Up to 15 ppm (A3), Up to 20 ppm (A4R) iR-ADV DX C3822i: 1-sided: Up to 22 ppm (A4, A5, A5R, A6R), Up to 15 ppm (A3), Up to 20 ppm (A4R)

<b>Print Resolution (dpi)</b>	1,200 x 600, 1,200 x 1,200 (half-speed)
<b>Page description languages</b>	Standard: UFRII, PCL6, Adobe® PostScript®3™
<b>Direct Print (RUI)</b>	Supported file types: PDF, EPS, TIFF/JPEG, and XPS
<b>Printing from mobile and cloud applications</b>	AirPrint, Mopria, Universal Print by Microsoft, Canon PRINT Business app, and uniFLOW Online (optional) A range of software and MEAP-based solutions are available to provide printing from mobile devices or internet-connected devices and cloud-based services depending on your requirements. Please contact your sales representative for further information
<b>OS Standard Printing</b>	Android/Windows® 10/Chrome OS/macOS (11.2.2) /iOS/iPadOS As of Mar. 2021
<b>Fonts</b>	PS fonts: 136 Roman PCL fonts: 93 Roman, 10 Bitmap fonts, 2 OCR fonts, Andalé Mono WT J/K/S/T** (Japanese, Korean, Simplified and Traditional Chinese), Barcode fonts** ** Optional PCL International Font Set-A1 is required. ** Optional Barcode Printing Kit-D1 is required.
<b>Print Features</b>	Secured Print, Secure Watermark, Header/Footer, Page Layout, Two-sided Printing, Mixed Paper Sizes/Orientations, Front/Back Covers, Toner Reduction, Poster Printing, Forced Hold Printing, Print Date, Scheduled Printing, Printing Using a Virtual Printer
<b>Operating System</b>	UFRII: Windows® 8.1/10/Server2012/Server2012 R2/Server2016/Server2019, Mac OS X(10.11 or later) PCL: Windows® 8.1/10/Server2012/Server2012 R2/Server2016/Server2019 PS: Windows® 8.1/10/Server2012/Server2012 R2/Server2016/Server2019, Mac OS X(10.11 or later) PPD: Windows® 8.1/10, Mac OS X(10.11 or later) As of Mar. 2021

<b>COPY SPECIFICATIONS</b>	
<b>Copy Speed (BW and CL)</b>	iR-ADV DX C3835i: 1-sided: Up to 35 ppm (A4, A5, A5R, A6R), Up to 17 ppm (A3), Up to 23 ppm (A4R) iR-ADV DX C3830i: 1-sided: Up to 30 ppm (A4, A5, A5R, A6R), Up to 15 ppm (A3), Up to 20 ppm (A4R) iR-ADV DX C3826i: 1-sided: Up to 26 ppm (A4, A5, A5R, A6R), Up to 15 ppm (A3), Up to 20 ppm (A4R) iR-ADV DX C3822i: 1-sided: Up to 22 ppm (A4, A5, A5R, A6R), Up to 15 ppm (A3), Up to 20 ppm (A4R)
<b>First-Copy-Out Time (A4, BW/ CL)</b>	iR-ADV DX C3835i: Approx. 5.5/7.4 seconds or less iR-ADV DX C3830i/C3826i/C3822i: Approx. 6.1/8.4 seconds or less
<b>Copy resolution (dpi)</b>	600 x 600
<b>Multiple Copies</b>	Up to 999 copies
<b>Copy Density</b>	Automatic or Manual (9 Levels)
<b>Magnification</b>	Variable zoom: 25% to 400% (1% Increments) Preset reduction/enlargement: 25%, 50%, 70%, 100%(1:1), 141%, 200%, 400%
<b>Copy Features</b>	Preset R/E Ratios by Area, Two-Sided, Density Adjustment, Original Type Selection, Interrupt Mode, Book to Two Pages, Two-sided Original, Job Build, N on 1, Add Cover, Insert Sheets, Different Size Originals, Page Numbering, Copy Set Numbering, Sharpness, Erase Frame, Secure Watermark, Print Date, Gutter, Print & Check, Negative/Positive, Repeat Images, Merge Job Blocks, Mirror Image, Store in Mail Box, Copy ID Card, Skip Blank Pages, Free Size Original, Color Mode, Reserved copy, Copy Sample

<b>SCAN SPECIFICATIONS</b>	
<b>Type</b>	Standard: Color Platen Optional: Platen Cover-Y3, Single Pass DADF-C1* or DADF-BA1 [2-sided to 2-sided (Automatic with DADF)] * Detect Feeder Multi Sheet Feed is supported. DADF: Duplexing Automatic Document Feeder
<b>Document Feeder Paper Capacity (80 gsm)</b>	Single Pass DADF-C1: up to 200 Sheets DADF-BA1: up to 100 Sheets
<b>Acceptable Originals and weights</b>	Platen: Sheet, Book, and 3-Dimensional Objects Document Feeder media weight: Single Pass DADF-C1: 1-sided scanning: 38 to 220 gsm (BW, CL) 2-sided scanning: 38 to 220 gsm (BW, CL) *An acceptable weights of A6R or smaller is 50 to 220gsm. DADF-BA1: 1-sided scanning: 38 to 128 gsm (BW), 64 to 128 gsm (CL) 2-sided scanning: 50 to 128 gsm (BW), 64 to 128 gsm (CL)
<b>Supported media sizes</b>	Platen: max. scanning size: 297.0 x 431.8 mm Single Pass DADF-C1: A3, A4, A4R, A5, A5R, A6R, B4, B5, B5R, B6R, Custom size: 69.9 x 139.7 mm to 304.8 x 431.8 mm DADF-BA1: A3, A4, A4R, A5, A5R, B4, B5, B5R, B6, Custom size: 139.7 x 128 mm to 297.0 x 431.8 mm
<b>Scan Speed (ipm: BW/CL,A4)</b>	Single Pass DADF-C1: 1-sided Scanning: 135/135 (300 x 300 dpi, send), 80/80 (600 x 600 dpi, copy) 2-sided Scanning: 270/270 (300 x 300 dpi, send), 160/90 (600 x 600 dpi, copy) DADF-BA1: 1-sided Scanning: 70/70 (300 x 300 dpi, send), 51/51 (600 x 600 dpi, copy) 2-sided Scanning: 35/35 (300 x 300 dpi, send), 25.5/25.5 (600 x 600 dpi, copy)



# TECHNICAL SPECIFICATIONS

# imageRUNNER ADVANCE DX C3800 Series

<b>Scan Resolution (dpi)</b>	Scan for Copy: 600 x 600 Scan for Send: (Push) 600 x 600 (SMB/FTP/WebDAV/IFAX), (Pull) 600 x 600 Scan for Fax: 600 x 600	<b>Document Security</b>	Print Security (Secure Print, Encrypted Secure Print, Forced Hold Printing, uniFLOW Secure Print*), Receive Data Security (Confidential Fax Inbox Forwarding Received Documents Automatically), Scan Security (Encrypted PDF, Device Signature PDF/XPS, User Signature PDF/XPS, Adobe LiveCycle® Rights Management ES2.5 Integration), BOX Security (Mail Box Password Protected, Advanced Space Access Control), Send Data Security (Setting for requesting password input per transmission, Restricted E-mail/File send functions, Confirming FAX number, Allow/Restrict Fax Driver Transmissions, Allow/Restrict Sending from History, S/MIME Support), Document Tracking (Secure Watermark) * Requires uniFLOW Online/uniFLOW
<b>Pull Scan Specifications</b>	Color Network ScanGear2. For both TWAIN and WIA Supported OS: Windows® 8.1/10/Server2012/Server2012 R2/Server 2016 As of Mar. 2020	<b>Network Security</b>	TLS 1.3, IPsec, IEEE8021X authentication, SNMP V3.0, Firewall Functionality (IP/MAC Address Filtering), Dual Network Support (Wired LAN/Wireless LAN, Wired LAN/Wired LAN), Disabling Unused Functions (Enabling/Disabling Protocols/Applications, Enabling/Disabling Remote UI, Enabling/Disabling USB Interface), Communication Line Separation (G3 FAX, USB Port, Advanced Space, Scan and Send -Virus Concerns for E-mail Reception)
<b>Scan Method</b>	Push Scan, Pull Scan, Scan to Box, Scan to Advanced Space, Scan to Network, Scan to USB Memory Key, Scan to Mobile device, Scan to cloud (uniFLOW Online - optional)	<b>Device Security</b>	Protecting SSD Data [SSD Data Encryption (FIPS140-2 Validated), SSD Lock], Standard SSD Initialize, Trusted Platform Module (TPM 2.0), Job Log Conceal Function, Protecting MFP Software Integrity, Checking MFD Software Integrity (Verify System at Startup, Runtime Intrusion Detection enabled with McAfee Embedded Control), HCD-PP Common Criteria Certification (pending confirmation)
<b>SEND SPECIFICATIONS</b>		<b>Device Management and Auditing</b>	Administrator Password, Digital Certificate And Key Management, Audit Log, Cooperating with External Security Audit System (Security Information and Event Management), Image Data Logging, Security Policy Setting
<b>Destination</b>	Standard: E-mail/Internet FAX (SMTP), SMB3.0, FTP, WebDAV, Mail Box Optional: Super G3 FAX, IP Fax	<b>ENVIRONMENTAL SPECIFICATIONS</b>	
<b>Address Book</b>	LDAP (2,000)/Local (1,600)/Speed dial (200)	<b>Operating Environment</b>	Temperature: 10 to 30 °C Humidity: 20 to 80 % RH (Relative Humidity)
<b>Send resolution (dpi)</b>	Push: up to 600 x 600 Pull: up to 600 x 600	<b>Power source</b>	220-240V 50/60Hz 5A
<b>Communication protocol</b>	File: FTP (TCP/IP), SMB3.0 (TCP/IP), WebDAV E-mail/l-Fax: SMTP, POP3	<b>Power consumption</b>	Maximum: Approx. 1,500 W Copying (with DADF continuous scan): Approx. 613 W*1 Standby: Approx. 40.7 W*1 Sleep mode: Approx. 0.8 W*2 *1 Reference value: measured one unit *2 0.8 W sleep mode is not available in all circumstances due to certain settings.
<b>File Format</b>	Standard: TIFF, JPEG, PDF(Compact, Searchable, Apply policy, Optimize for Web, PDF/A-1b, Trace & Smooth, Encrypted, Device Signature, User Signature), XPS(Compact, Searchable, Device Signature, User Signature), Office Open XML (PowerPoint, Word)	<b>Typical Electricity Consumption (TEC)* :</b>	iR-ADV DX C3835i: 0.40 kWh iR-ADV DX C3830i: 0.32 kWh iR-ADV DX C3826i: 0.28 kWh iR-ADV DX C3822i: 0.25 kWh *As per USA Energy Star 3.0
<b>Universal Send Features</b>	Original Type Selection, Two-sided Original, Book to Two Pages, Different-size Originals, Density Adjustment, Sharpness, Copy Ratio, Erase Frame, Job Build, Delayed Send, Preview, Job Done Notice, File Name, Subject/Message, Reply-to, E-mail Priority, TX Report, Original Content Orientation, Skip Blank Originals	<b>Noise levels</b>	<b>Sound Power Level (LWA<sub>m</sub>)</b> Active (BW)(1-sided) iR-ADV DX C3835i: 61 dB, Kv 3 dB iR-ADV DX C3830i: 60 dB, Kv 3 dB iR-ADV DX C3826i: 60 dB, Kv 3 dB iR-ADV DX C3822i: 60 dB, Kv 3 dB *Reference value: measured only one unit with ISO7779, described with ISO9296 (2017). <b>Sound Pressure (Lp<sub>A,m</sub>)</b> Bystander's position: Active(BW/CL)(1-sided): iR-ADV DX C3835i: 47 dB*/ 48 dB* iR-ADV DX C3830i: 46 dB*/ 47 dB* iR-ADV DX C3826i: 46 dB*/ 47 dB* iR-ADV DX C3822i: 46 dB*/ 46 dB* *Reference value: measured only one unit with ISO7779, described with ISO9296 (2017).
<b>FAX SPECIFICATIONS</b>		<b>Standards</b>	Blue Angel
<b>Maximum Number of Connection Lines</b>	2	<b>CONSUMABLES</b>	
<b>Modem Speed</b>	Super G3: 33.6 kbps G3: 14.4 kbps	<b>Toner Cartridges</b>	C-EXV 49 Toner BK/C/M/Y
<b>Compression Method</b>	MH, MR, MMR, JBIG	<b>Toner Yield (Estimated @5% Coverage)</b>	C-EXV 49 Toner BK: 36,000 pages C-EXV 49 Toner C/M/Y: 19,000 pages
<b>Resolution (dpi)</b>	400 x 400 (Ultra Fine), 200 x 400 (Super Fine), 200 x 200 (Fine), 200 x 100 (Normal)	<b>SOFTWARE AND PRINTER MANAGEMENT</b>	
<b>Sending and Receiving Size</b>	Sending: A3, A4, A4R, A5*, A5R*1, B4, B5*2, B5R*1 Receiving: A3, B4, A4, A4R, A5R, B5, B5R *1 Sent as A4 *2 Sent as B4 short	<b>Tracking and reporting</b>	Universal Login Manager (ULM) uniFLOW Online Express* *For more information, please refer to: <a href="#">uniFLOW Online Express</a> <a href="#">uniFLOW Online</a>
<b>FAX memory</b>	Up to 30,000 pages (2,000 jobs)	<b>Remote management tools</b>	iWEMC eMaintenance Content Delivery System
<b>Speed dials</b>	Max. 200	<b>Scanning software</b>	Color Network ScanGear 2
<b>Group dials/destinations</b>	Max. 199 dials	<b>Optimisation tools</b>	Canon Driver Configuration Tool
<b>Sequential broadcast</b>	Max. 256 addresses	<b>Platform</b>	MEAP (Multifunctional Embedded Application Platform)
<b>Memory backup</b>	Yes	<b>Document Publishing</b>	Kofax Power PDF Advanced (optional)
<b>Fax Features</b>	Sender's Name (TTI), Selecting the Telephone Line (when sending fax), Direct Send, Delayed Send, Preview, Job Done Notice, TX Report, Interrupt Transmission, Sequential Broadcasting, Password/Subaddress Sending, Confidential Mailbox, 2 on 1 Log		
<b>STORE SPECIFICATIONS</b>			
<b>Box (Number supported)</b>	100 User Inboxes, 1 Memory RX Inboxes, 50 Confidential Fax Inboxes Maximum 10,000 Pages (2,000 jobs) Stored		
<b>Advanced Space</b>	Communication Protocol: SMB or WebDAV Supported Client PC: Windows® 8.1/10 Concurrent Connections (Max.): SMB:64, WebDAV:3		
<b>Advanced Space available disc space</b>	Standard:16 GB (With option: max. 480GB)		
<b>Advanced Space Features:</b>	Authentication for Advanced Space Log-in, Sort Function, Printing a PDF File with a Password, imageWARE Secure Audit Manager Support, Search, File Preview, Authentication Management, Open to public, URI TX, Backup/Restore		
<b>SECURITY SPECIFICATIONS</b>			
<b>Authentication and Access Control</b>	User Authentication (Picture Login, Picture and PIN Login, Card Login*), Username and Password Login, Function Level Login, Mobile Login), Department ID Authentication (Department ID and PIN Login, Function Level Login), uniFLOW Online Express (PIN Login, Picture Login, Picture and PIN Login, Card Login, Card and PIN Login, Username and Password Login, Department ID and PIN Login, Function Level Login), Access Management System (Access Control) *Card readers are optional, please refer to Hardware Accessories Activation is required		



# TECHNICAL SPECIFICATIONS

# imageRUNNER ADVANCE DX C3800 Series

## PAPER SUPPLY OPTIONS

### Cassette Feeding Unit-AW1

Paper Capacity: 550 sheets x 2 (1,100 sheets) (80 gsm)  
 Paper Type: Thin, Plain, Recycled, Color, Heavy, Bond, Transparency, Pre-punched, Letterhead  
 Paper Size: A3, A4, A4R, A5, A5R, A6R, B4, B5, B5R, Custom Size: 105.0 x 148.0 mm to 304.8 x 457.2 mm  
 Paper Weight: 52 to 256 gsm  
 Power Source: From the Main Unit  
 Dimensions (W x D x H): 565 x 635 x 248 mm  
 Weight: Approx. 16.0 kg

## OUTPUT OPTIONS\*

### Inner 2way Tray-M1

\*Paper capacity may vary with different paper type/size.  
 Tray Capacity (with 80 gsm paper)  
 Upper tray: A4, A5, A5R, A6R, B5, B5R: 85 sheets  
 SRA3, A3, A4R, B4: 40 sheets  
 Lower tray (standard tray): A4, A5, A5R, A6R, B5, B5R: up to 220 sheets  
 SRA3, A3, A4R, B4: up to 100 sheets  
 Paper Weight: 52 to 300 gsm  
 Dimensions (W x D x H): 428 x 405 x 88 mm  
 Weight: 0.7 kg

### Copy Tray-T1

Capacity (with 80gsm paper):  
 A4, A5R, B5, B5R: 100 sheets  
 A3, A4R, B4: 65 sheets  
 Dimensions (W x D x H): 442 x 373 x 176 mm (attached to the main unit, when the extension tray is extended)  
 Weight: 0.5 kg

### Inner Finisher-L1

Tray Capacity (with 80gsm paper):  
 Upper Tray: SRA3, A3, A4, A4R, A5, A5R, A6R, B4, B5, B5R: approx. 45 sheets  
 Lower Tray: A4, A5, A5R, B5: approx. 500 sheets  
 SRA3, A3, A4R, B4, B5R: 250 sheets  
 A6R: 30 sheets  
 Envelope: 10 sheets  
 Paper Weight: 52 to 300 gsm  
 Staple Position: Corner, Double  
 Staple Capacity:  
 A4, B5: 50 sheets (52 to 90 gsm)  
 A4R: 40 sheets (52 to 90 gsm)  
 A3, B4: 30 sheets (52 to 90 gsm)  
 Eco Staple:  
 A3, A4, B4, B5: 10 sheets (52 to 64 gsm)  
 8 sheets (65 to 81.4 gsm)  
 6 sheets (82 to 105 gsm)  
 Staple On Demand: approx. 40 sheets (80 gsm)  
 Dimensions (W x D x H): 727 x 525 x 225 mm (attached to the main unit, when the extension tray is extended)  
 Weight: Approx. 9.1 kg

### Staple Finisher-AE1

Tray Capacity (with 80gsm paper):  
 Upper Tray: A4, A5, A5R, A6R, B5: approx. 250 sheets  
 SRA3, A3, A4R, B4, B5R: approx. 125 sheets  
 Lower Tray: A4, A5, A5R, B5: 3,000 sheets  
 SRA3, A3, A4R, B4, B5R: 1,500 sheets  
 A6R: 250 sheets  
 Envelope: Monarch 30 sheets, COM10 No.10, DL, ISO-C5: 100 sheets  
 Paper Weight:  
 Upper Tray: 52 to 256 gsm  
 Lower Tray: 52 to 300 gsm  
 Staple Position: Corner, Double  
 Staple Capacity: A4, B5: 50 sheets (52 to 90 gsm)  
 A4R: 40 sheets (52 to 90 gsm)  
 A3, B4: 30 sheets (52 to 90 gsm)  
 Eco Staple:  
 A3, A4: 10 sheets (52 to 64 gsm)  
 8 sheets (65 to 81.4 gsm)  
 6 sheets (82 to 105 gsm)  
 Staple On Demand: 50 sheets (52 to 90 gsm)  
 Dimensions (W x D x H): 637 x 623 x 1,021 mm (when the extension tray is extended)  
 Weight: Approx. 30.0 kg

### Booklet Finisher-AE1

(Includes the above Staple Finisher-AE1 basic staple specifications.)  
 Saddle Stitch paper size: A3, A4R, B4  
 Saddle Stitch Staple Capacity: 20 sheets x 10 sets (52 to 81.4 gsm) (including 1 cover sheet up to 256 gsm)  
 Non Staple Folded Bunch Capacity: up to 3 sheets (52 to 105 gsm)  
 Power supply: From main unit  
 Dimensions (W x D x H): 637 x 623 x 1,021 mm (when the extension tray is extended)  
 Weight: Approx. 53.0 kg

### Inner 2/4 Hole Puncher-D1

(Requires Inner Finisher-L1)  
 Two or Four Holes  
 Acceptable Punch Paper Weight: 52 to 300 gsm  
 Acceptable Punch Paper Size:  
 Two holes A3, A4, A4R, A5, B4, B5, B5R,  
 Four holes A3, A4

### Inner 4 Hole Puncher-D1

(Requires Inner Finisher-L1)  
 Four Holes  
 Acceptable Punch Paper Weight: 52 to 300 gsm  
 Acceptable Punch Paper Size:  
 Four holes A3, A4, A4R, A5, B4, B5, B5R

### 2/4 Hole Puncher Unit-A1

(Requires either the Staple Finisher-AE1 or Booklet Finisher-AE1)  
 Two or Four Holes  
 Acceptable Punch Paper Weight: 52 to 300 gsm  
 Acceptable Punch Paper Size:  
 Two holes A3, A4, A4R, A5, B4, B5, B5R,  
 Four holes A3, A4

### 4 Hole Puncher Unit-A1

(Requires either the Staple Finisher-AE1 or Booklet Finisher-AE1)  
 Four Holes  
 Acceptable Punch Paper Weight: 52 to 300 gsm  
 Acceptable Punch Paper Size:  
 Four holes A3, A4, A4R, A5, B4, B5, B5R

## HARDWARE ACCESSORIES

### Card Readers

Copy Card Reader-F1  
 Copy Card Reader Attachment-B7  
 IC Card Reader Box for Numeric Keypad-A1

### Others

Single Pass DADF-C1  
 DADF-BA1  
 Platen Cover-Y3  
 Utility Tray-B1  
 Numeric Keypad-A2  
 Instant Stapler-B1 (optional)  
 Media Adjustment Kit-A1

## SECURITY OPTIONS

### Data Security

1TB SSD-A1  
 Memory Mirroring Kit-A1  
 250GB SSD-A1 (usage with Memory Mirroring Kit-A1)

## SYSTEM AND CONTROLLER OPTIONS

### Print Accessories

PCL International Font Set-A

### Barcode Printing

Barcode Printing Kit-D1

### System Accessories

Copy Control Interface Kit-A1  
 Serial Interface Kit-K3  
 Connection Kit-A3 for Bluetooth LE  
 NFC Kit-E2

### Fax Accessories

Super G3 FAX Board-BH1  
 Super G3 2nd Line Fax Board-BH1  
 Remote Fax Kit-A1  
 IP FAX Expansion Kit-B1

## OTHER OPTIONS

### Accessibility Accessories

ADF Access Handle-A1  
 Voice Guidance Kit-G1  
 Voice Operation Kit-D1

### Staple Cartridges

Staple Cartridge-Y1 (2 x 2,000pcs)\*  
 \* For Booklet Finisher only  
 Staple-P1 (2 x 5,000pcs)

### Device Protection

Antimicrobial Film\* - Various Sheets designed to fit the devices most common touch points.  
 \*Application by a Service engineer is recommended

## Software & Solutions



## Certifications and compatibility



Canon Inc.  
 canon.com

Canon Europe  
 canon-europe.com

English edition  
 © Canon Europa N.V., 2021