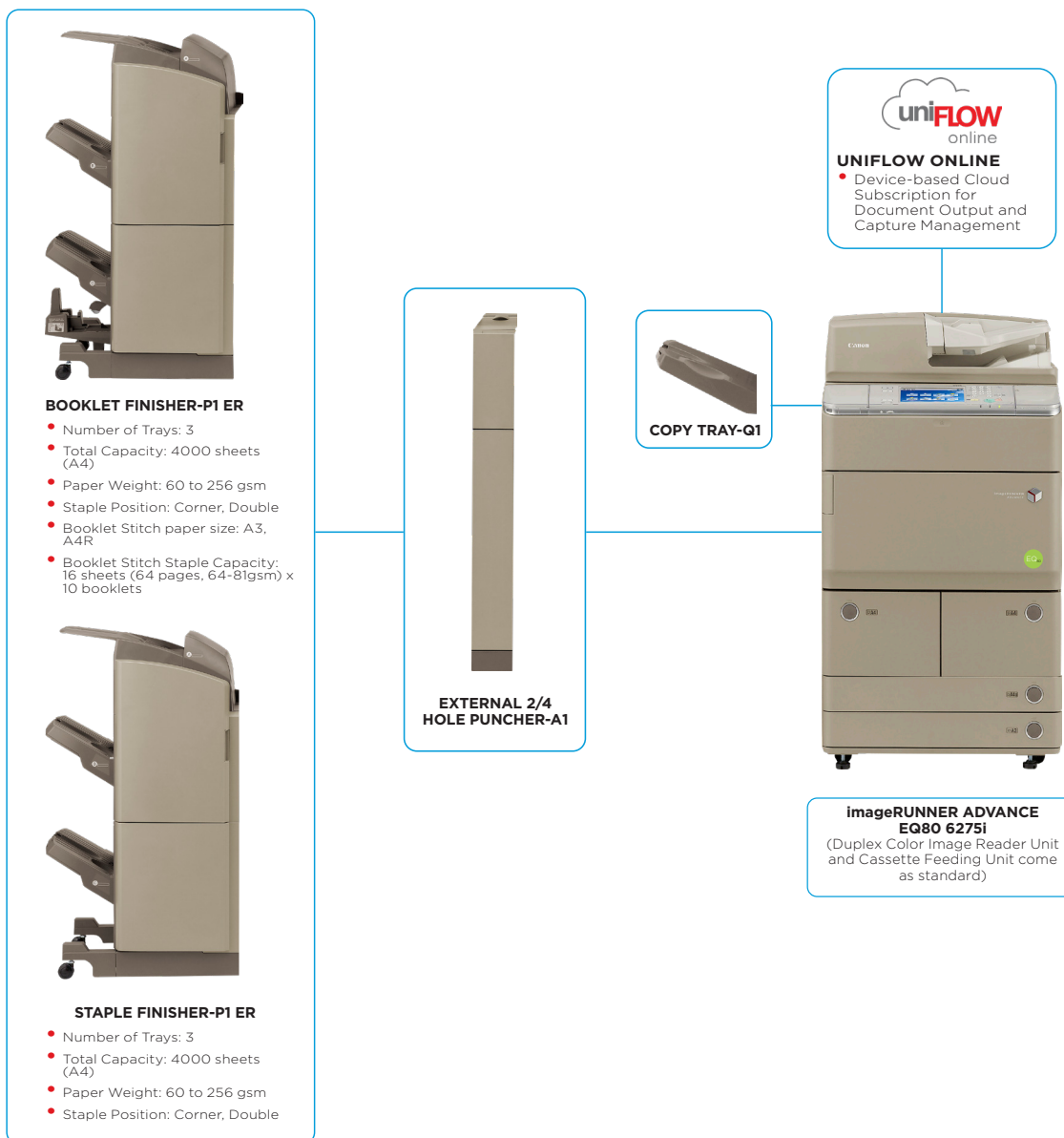




# ENHANCE YOUR BUSINESS SUSTAINABILITY WITH A SECURE AND ENVIRONMENTALLY EFFICIENT A3 REMANUFACTURED MONO MULTIFUNCTION DEVICE

## Main configuration options



# TECHNICAL SPECIFICATIONS

# imageRUNNER ADVANCE EQ80 6275i

## MAIN UNIT

**Machine type** Monochrome Laser Multifunctional.  
**Available Core functions** iR-ADV 6275i EQ80: Print, Copy, Scan, Send and Optional Fax

## PRINT SPECIFICATIONS

**Print Speed** iR-ADV 6275i EQ80: 75 ppm (A4), 37 ppm (A3), 54 ppm (A4R), 35 ppm (A5R)

**Printing method** Monochrome laser beam printing

**Print Resolution** 1200 dpi x 1200 dpi, 600 dpi x 600 dpi

**Double Sided Printing** Automatic (Standard)

**Printing from memory media** Remote UI, Advanced Space and Web Access  
 Supported file types: JPEG, TIFF, PDF\*, XPS\*.  
 \* Requires PS PRINTER KIT-AV1 for PDF or DIRECT PRINT KIT(for PDF/XPS)-H1 for PDF/XPS. XPS direct print from removable media is not available.

**Printing from mobiles or internet-connected devices and cloud-based services** A range of software and MEAP-based solutions is available to provide printing from mobile devices or internet-connected devices and cloud-based services depending on your requirements. Please contact your sales representative for further information.

**Paper input (Standard)** 2 x 1500-sheet cassettes + 2 x 550-sheet cassettes (80 gsm)  
 100-sheet multi-purpose tray

**Maximum paper input capacity** 4200 sheets (80 gsm)

**Paper output capacity** With Copy Tray : 250-sheets(A4, 80 gsm).  
 With Shift Tray : 500-sheets(A4, 80 gsm).  
 With External Finishers: Max. 4000-sheets (A4, 80 gsm).

**Finishing capabilities** With finishing units: Collate, Group, Offset, Staple, Saddle Stitch, Hole Punch,

**Supported media types**  
Upper Left/Right Cassettes(1/2):  
 Thin paper, Plain paper, Recycled paper, Colour paper, Heavy paper, Pre-punched paper, Letterhead, Bond paper  
Lower Cassettes (3/4):  
 Thin paper, Plain paper, Recycled paper, Colour paper, Heavy paper, Pre-punched paper, Letterhead, Bond paper, Tab paper\*.  
 \* Tab paper can be fed from cassette 3 & 4 when the optional TAB FEEDING ATTACHMENT KIT-B1 is installed.

Multi-purpose tray:  
 Thin paper, Plain paper, Recycled paper, Colour paper, Heavy paper, Pre-punched paper, Bond, Transparency, Label, Letterhead, Bond paper, Envelope

**Supported media sizes**  
Upper Left/Right Cassettes(1/2):  
 Standard size: A4, B5  
Lower Cassettes (3/4):  
 Standard size: A4, A4R, A3, A5R, B5, B5R  
 Free size: 139.7 mm x 182 mm to 297 mm x 487.7 mm  
Multi-purpose tray:  
 Standard size: A4, A4R, A3, A5R, B5, B5R, Envelopes(No. 10(COM 10), ISO-B5, Monarch, ISO-C5, DL)  
 Free size: 100 mm x 148 mm to 297 mm x 487.7 mm

**Supported media weights** Cassettes: 52 to 220 gsm,  
 Multi-purpose tray: 52 to 256 gsm  
 Duplex: 52 to 220 gsm

**Page Description Language(s)** UFR II / PCL5e/6 (Standard)  
 Genuine Adobe PostScript Level 3 (option)

**Fonts** PCL fonts: 93 Roman, 10 Bitmap fonts, 2 OCR fonts, Andalé Mono WT J/k/S/T\* (Japanese, Korean, Simplified and Traditional Chinese)\*Requires optional PCL INTERNATIONAL FONT SET-A1.  
 PS fonts: 136 Roman

## Operating System compatibility

Please refer to <http://software.canon-europe.com/> for availability of print solutions for other operating systems and environments including AS/400, UNIX, Linux and Citrix. Some of these solutions are chargeable.  
 SAP Device Types are available via the SAP Market Place.

## COPY SPECIFICATIONS

**Copy speed** iR-ADV 6275i EQ80: 75 ppm (A4), 37 ppm (A3), 54 ppm(A4R), 35 ppm (A5R)

**First Copy Output Time (FCOT)** iR-ADV 6275i EQ80: Approx. 3.1 seconds or less

**Copy resolution** Reading: 600 dpi x 600 dpi  
 Printing: 1200 dpi x 1200 dpi

**Multiple copy** Up to 999 copies

**Reduction/Enlargement** Zoom: 25-400 % in 1 % increments  
 Fixed Zoom Ratio: 25 %, 50 %, 70 %, 100 %, 141 %, 200 %, 400 %

## SCAN SPECIFICATIONS

**Optional/Standard** DUPLEX COLOUR IMAGE READER UNIT-G1 (Standard) provides: Colour flatbed scan unit and 300-sheet duplex automatic document feeder (1-Pass duplex colour scan).

**Type** Colour flatbed plus Single-pass duplex automatic document feeder (1-Pass Duplex Scan)

**Supported media size/s** A3, A4, A4R, A5, A5R, Free sizes (W x L): Min. 139.7 mm x 128 mm, Max. 432 mm x 304.8 mm

**Supported media weight/s** Single-sided scanning: 38 to 220 gsm/64 to 220 gsm (BW/CL); Double-sided scanning: 50 to 220 gsm/64 to 220 gsm(BW/CL)

**Scan resolution** 100 dpi, 150 dpi, 200 x 100 dpi, 200 dpi, 300 dpi, 200 x 400 dpi\*, 400 dpi\*, 600 dpi\*  
 \*Requires optional 512MB memory

**Double sided scanning** 2-sided to 2-sided (Automatic)

**Scan speed** Single-sided (A4, 300 dpi): 120/85 ipm (BW/CL);  
 Double-sided (A4, 300 dpi): 200/100 ipm (BW/CL)

**Scan methods** Push Scan, Pull Scan, Scan to Box, Scan to Advanced Space, Scan to Network, Scan to USB Memory Key, Scan to Mobile devices, Scan to cloud (uniFLOW Online -Optional)

**Pull scan specifications** Color Network ScanGear2. For both TWAIN and WIA  
 Supported OS: Windows® 8.1/10/Server2012/Server2012 R2/Server 2016  
 As of Mar. 2020

## SEND SPECIFICATIONS

**Optional/ standard** Standard

**Send resolution** 100 dpi, 150 dpi, 200 x 100 dpi, 200 dpi, 300 dpi, 200 x 400 dpi\*, 400 dpi\*, 600 dpi\*  
 \*Requires optional 512MB memory

**Destinations** E-Mail/Internet FAX (SMTP), PC (SMB, FTP), WebDAV

**Address Book/Speed dials** LDAP (1000)/Local (Max. 500)

**File formats** TIFF, JPEG, PDF, XPS, High compression PDF/XPS, Searchable PDF/XPS, PDF/A-1b, Office Open XML (PowerPoint)

**Universal Send Feature Sets** UNIVERSAL SEND SECURITY FEATURE SET-D1 (option): Send encrypted PDF, and add digital device signature to PDF/XPS files.  
 UNIVERSAL SEND DIGITAL USER SIGNATURE KIT-C1 (option): Add digital user signature to PDF/XPS files.

# TECHNICAL SPECIFICATIONS

# imageRUNNER ADVANCE EQ80 6275i

## GENERAL SPECIFICATIONS

<b>Warm-up Time</b>	Approx. 30 seconds from Power ON (normal mode), 7 seconds from Power ON (quick start mode), 30 seconds from sleep mode
<b>Interface type</b>	USB 2.0 Hi-Speed, Ethernet: 1000BaseT/100Base-TX/10Base-T, 2 x USB Host (2.0)
<b>Network protocols</b>	TCP/IP* (LPD/Port 9100/WSD/IPP/IPPS/SMB/FTP), IPX/SPX (NDS, Bindery), AppleTalk *IPv4/IPv6 support
<b>Processor Speed</b>	1.8 Ghz
<b>Memory</b>	2GB (Optional 512MB memory for colour scan and send above 300 dpi)
<b>Hard Disk Drive</b>	Standard 160 GB Hard Disk Drive (usable space 160 GB)
<b>Control panel</b>	21.3 cm (8.4 inch) TFT LCD SVGA Colour Touchscreen, Optional 26.4 (10.4 inch) TFT SVGA tiltable Colour Touchscreen display
<b>Dimensions (W x D x H)</b>	645 mm x 770 mm x 1220 mm
<b>Installation space (W x D)</b>	1362 mm x 1289 mm ( Basic: Only Multi-purpose tray + Cassette drawers open + Copy Tray)
<b>Weight</b>	Approx. 234 kg
<b>Operating environment</b>	Temperature: 10 to 30°C (50 to 86°F) Humidity: 20 to 80 % RH (no condensation)
<b>Power Source</b>	220-240 V (±10 %), 50/60 Hz (±2 Hz), 10 AMP
<b>Power Consumption</b>	Maximum: Approx. 2.4 KW Standby: Approx. 246 W Energy Saver Mode: Approx. 223 W Sleep mode: Approx. 0.9 W or less (See footnote 2) Typical Electricity Consumption (TEC) rating (See footnote 3): 6.7 kWh (iR-ADV 6275i EQ80)
<b>Noise Levels</b>	Sound Pressure (See footnote 4) Active: 57 dB Standby: 36 dB
<b>Software and printer management</b>	For detailed information please visit our website <a href="https://www.canon-europe.com/business/">https://www.canon-europe.com/business/</a>
<b>Tracking and reporting</b>	Universal Login Manager (ULM) uniFLOW Online Express* * For more information, please refer to <a href="#">uniFLOW Online Express</a> <a href="#">uniFLOW Online</a>
<b>Remote management tools</b>	iWEMC eMaintenance Content Delivery System
<b>Scanning software</b>	Network ScanGear
<b>Optimisation tools</b>	Canon Driver Configuration Tool
<b>Platform</b>	MEAP (Multifunctional Embedded Application Platform)
<b>Document Publishing</b>	Kofax PowerPDF Advanced (Optional)
<b>Security Features</b>	<b>Standard:</b> IP/Mac Address Filtering, IPSEC, SNMP V3.0, IEEE 802.1X, Trusted Platform Module (TPM), Secure Print, Hard Disk Password Lock, Hard Disk Drive Erase, Universal Login Manager, Department ID, SSO, SSO-H, Mailbox, Access Management System. <b>Optional:</b> Encrypted Secure Print, Encrypted PDF, Hard Disk Drive Mirroring and Encryption, User and Device signatures, Secure Watermarks. The following items require uniFLOW: My Print Anywhere secure print, Data Loss Prevention.

## CONSUMABLES

<b>Toner Cartridge/s</b>	C-EXV 36 TONER BK (Yield 56000 pages See footnote 5)
--------------------------	--

## FINISHING OPTIONS

<b>Staple Finisher-P1 ER</b>	STAPLE FINISHER-P1 ER Number of Trays: 3 Tray A (Upper) Capacity: A4 1300 sheets, A3/A4R/A5 650 sheets Tray B (Middle) Capacity: A4 2450 sheets, A3/A4R/A5 650 sheets Tray C (Lower) Capacity: A4/A5R 250 sheets, A3/A4R 125 sheets Paper Weight: 60 to 256 gsm Staple Position: Corner, Double Staple Capacity: A4: 50 sheets; A3/A4R: 30 sheets; Dimensions (W x D x H): 644 mm x 656 mm x 1121 mm (when the extension tray is not extended) Weight: Approx. 48 kg
------------------------------	---

## Booklet Finisher-P1 ER

BOOKLET FINISHER-P1 ER Number of Trays: 3 Tray A (Upper) Capacity: A4 1300 sheets, A3/A4R/A5 650 sheets Tray B (Middle) Capacity: A4 2450 sheets, A3/A4R/A5 650 sheets Tray C (Lower) Capacity: A4/A5R 250 sheets, A3/A4R 125 sheets Paper Weight: 60 to 256 gsm Staple Position: Corner, Double Staple Capacity: A4: 50 sheets; A3/A4R: 30 sheets; Booklet Stitch paper size: A3, A4R Booklet Stitch Staple Capacity: 16 sheets (64 pages, 64-81gsm) x 10 booklets Dimensions (W x D x H): 646 mm x 656 mm x 1121 mm (when the extension tray is not extended) Weight: Approx. 70.5kg
--

## Puncher Unit/s

EXTERNAL 2/4 HOLE PUNCHER-A1*: 2 holes, 4 holes * Requires either the BOOKLET FINISHER-P1 ER or STAPLE FINISHER-P1 ER Acceptable Punch Paper Weight: 52 to 256 gsm Acceptable Punch Paper Size: 2 holes A3, A4, A4R; 4 holes A3, A4
--

## ADDITIONAL OPTIONS

<b>Hardware accessories 1</b>	COPY TRAY-Q1: Provides a simple tray for basic output needs. Capacity: 250 sheets (A4).
-------------------------------	---

SHIFT TRAY-E1: Capacity: 500 sheets

TAB FEEDING ATTACHMENT KIT-B1: Allows users to print on A4-sized tab paper which is loaded in paper cassette 3 and 4

## Hardware accessories 2

CARD READER-F1: Magnetic physical card access system. (Integrates with Department ID, not for use with uniFLOW)

COPY CARD READER ATTACHMENT-A4: Attachment kit for Copy Card Reader-F1 only.

# TECHNICAL SPECIFICATIONS

# imageRUNNER ADVANCE EQ80 6275i

## Print controller accessories

PCL INTERNATIONAL FONT SET-A1: Adds PCL support for Andalé Mono WT J/K/S/T (Japanese/Korean/Simplified Chinese/Traditional Chinese).

PS PRINTER KIT-AV1: Adds Genuine Adobe PostScript Support. Also enables users to print PDF/PS/EPS files directly to the device.)

DIRECT PRINT KIT (FOR PDF/XPS)-H1: Enables users to print PDF/XPS files directly to the device.

BARCODE PRINTING KIT-D1: Enables printing of barcodes in SAP R/3 environments, other Enterprise Resource Planning (ERP) software, as well as Windows-based applications.

Instant Stapler-A1 (Optional)

WEB ACCESS SOFTWARE-J1: Provide access to websites and other web-based online content.

REMOTE FAX KIT-A1: Enables the device to send and receive fax from another device connected with a fax board.

COPY CONTROL INTERFACE KIT-A1: Allows connection (CCVI I/F) between 3rd party copy control terminal and Canon's imageRUNNER ADVANCE range for cost recovery use.

ADDITIONAL MEMORY TYPE D (512MB)

SERIAL INTERFACE KIT-K3: Serial interface for Cost Recovery Solutions.

## Portable Stapler Unit System accessories

## Device security accessories

HDD DATA ENCRYPTION AND MIRRORING KIT-C5: Provides encryption and mirroring of both temporary and permanent data. Encryption enables copied or scanned images to be encrypted BEFORE they are saved on the device's hard drive. The pack includes the Common Criteria level EAL3 certified Canon MFP security kit 2.01. Mirroring copies all data in real time, providing a highly reliable back-up.

## DOCUMENT SECURITY

SECURE WATERMARK-B1: Deters duplication of sensitive documents by embedding hidden watermarks that become visible when copied.

ENCRYPTED PRINTING SOFTWARE-D1: Encrypts the print job in transit to the device and requires a password at the printer before documents can be printed.

## Accessibility accessories

REMOTE OPERATORS SOFTWARE KIT B1(Standard): Allows use of the device control panel screens from remote computers.

## Other options

STAMP INK CARTRIDGE-C1  
STAPLE CARTRIDGE-D3: (R) GP for Booklet Finisher-P1 ER  
STAPLE CARTRIDGE-J1: GP for Staple Finisher and Booklet Finisher.

## Footnotes

- <sup>(1)</sup> Based on ITU-T Standard Chart No. 1
- <sup>(2)</sup> 0.9 watt sleep mode may not be possible in all circumstances. Certain network configurations and options may prevent the device from entering deep sleep mode. Please refer to the user guide for more information
- <sup>(3)</sup> Typical Electricity Consumption (TEC) rating represents the typical electricity consumed by a product during 1 week, measured in kilowatt-hours (kWh). The test methodology is defined by Energy Star V2.0 (<http://www.eu-energystar.org>).
- <sup>(4)</sup> Declared noise emission in accordance with ISO 7779
- <sup>(5)</sup> Based on 6% coverage

## STANDARD DISCLAIMERS

All specifications subject to change without notice

## Software & Solutions



Canon Inc.  
canon.com  
Canon Europe  
canon-europe.com  
English edition  
© Canon Europa N.V., 2021