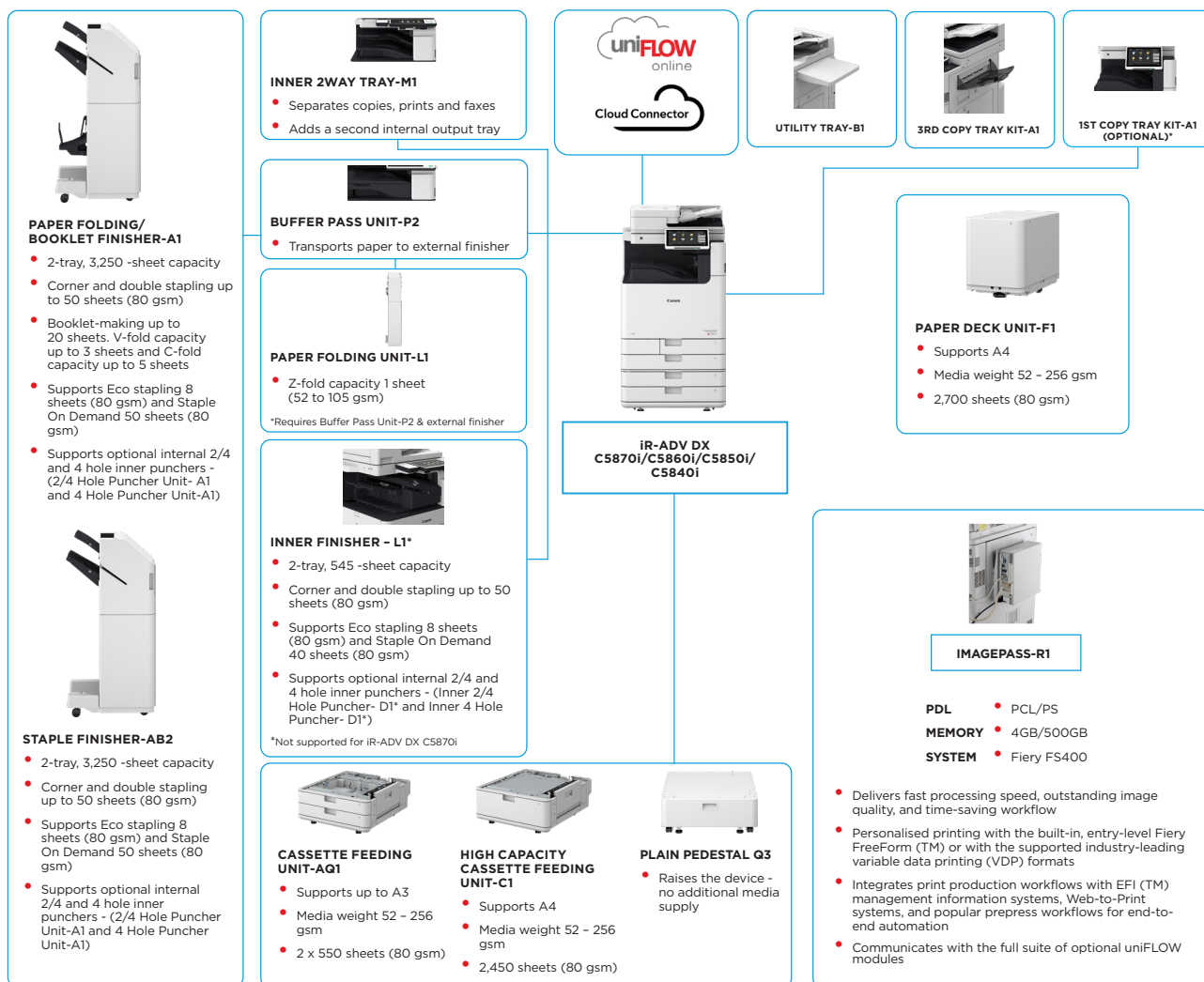


# imageRUNNER ADVANCE DX C5800 Series

## POWERFUL PRODUCTIVITY FROM SECURE COLOUR A3 MULTIFUNCTION DEVICES

### MAIN CONFIGURATION OPTIONS



This flat configuration is for illustration purpose only. For a complete list of options and the exact compatibility relationships, please refer to the [online product configurator](#).

The Unified Firmware Platform (UFP) ensures that the latest feature upgrades and protection are available, for an enhanced user experience across the entire iR ADVANCE DX portfolio.

\*To support Sustainability and save on raw materials required for plastics, 1st Copy Tray Kit-A1 is optional.

# TECHNICAL SPECIFICATIONS

# imageRUNNER ADVANCE DX C5800 Series

## MAIN UNIT

### Machine type Core functions Processor Control Panel

A3 Color Laser Multifunctional  
Print, Copy, Scan, Send, Store and Optional Fax  
1.8GHz Dual Core Processor  
10.1" TFT LCD WSVGA Color Touch panel  
(up to 90° tiltable)  
Standard: 6.0GB RAM  
Standard: (SSD) 256GB,  
Optional: (SSD) 256GB, 1TB  
NETWORK  
Standard: 1000Base-T/100Base-TX/10Base-T,  
Wireless LAN (IEEE 802.11 b/g/n);  
OTHERS  
Standard: USB 2.0 (Host) x1, USB 3.0 (Host) x1,  
USB 2.0 (Device) x1;  
Optional: Serial Interface, Copy Control Interface

### Paper Supply Capacity (A4, 80gsm)

Standard: 1,200 sheets  
100-sheet Multi-purpose tray x 1  
550-sheet Paper cassette x 2,  
Maximum: 6,350 sheets (with High Capacity Cassette  
Feeding Unit-C1 + Paper Deck Unit-F1)  
Maximum: 3,450 Sheets (with Staple Finisher-AB2 or  
Paper Folding/Booklet Finisher-A1 and 3rd Copy  
Tray Kit-A1)

### Paper output capacity (A4, 80gsm)

Collate, Group, Offset, Staple, Saddle Stitch, Hole Punch,  
Eco Staple, Staple On Demand, V-fold, C-fold, Z-fold  
\* Finishing capabilities will vary depending on the options connected.

### Finishing capabilities

### Supported Media Types

Multi-purpose tray:  
Thin, Plain, Recycled, Color, Heavy, Coated, Tracing,  
Bond, Transparency, Label, Pre-punched, Letterhead,  
Tab, Envelope  
Paper Cassette (Upper/Lower):  
Thin, Plain, Recycled, Color, Heavy, Bond, Transparency,  
Pre-punched, Letterhead, Envelope\*  
\* Envelope Feeder Attachment (standard) is required.

### Supported Media Sizes

Multi-purpose tray:  
Standard size: SRA3, A3, A4, A4R, A5, A5R, A6R, B4,  
B5, B5R  
Custom size: 98.0 x 139.7 mm to 320.0 x 457.2 mm  
Free Size: 98.0 x 139.7 mm to 320.0 x 457.2 mm  
Envelopes: COM10 No.10, Monarch, DL, ISO-C5  
Envelope custom size: 98.0 x 90.0 mm to 320.0 x 457.2 mm  
Upper Cassette:  
Standard size: A4, A5, A5R, A6R, B5  
Custom Size: 98.0 x 148.0 mm to 297.0 x 215.9 mm  
Envelopes: COM10 No.10, Monarch, DL, ISO-C5  
Lower Cassette:  
Standard size: A3, A4, A4R, A5, A5R, A6R, B4, B5, B5R  
Custom size: 98.0 x 148.0 mm to 304.8 x 457.2 mm  
Envelopes: COM10 No.10, Monarch, DL, ISO-C5

### Supported media weights

Multi-purpose tray: 52 to 300 gsm  
Paper Cassette (Upper/Lower): 52 to 256 gsm  
Duplex: 52 to 256 gsm

### Warm-up Time

Quick Startup Mode: 4 Seconds or Less\*  
\* Time from device power-on to when the copy icon appears and is  
enabled to operate on the touch panel display.

From Sleep Mode:  
7 Seconds or Less (iR-ADV DX C5870i)  
6 Seconds or Less (iR-ADV DX C5860i/C5850i/C5840i)  
From Power On: 6 Seconds or less (with Quick Start  
Mode)\*  
\* Time from device power-on, until copy ready (not print reservation).

### Dimensions (W x D x H)

iR-ADV DX C5870i/C5860i/C5850i/C5840i:  
620 x 722 x 937 mm

### Installation Space (W x D)

iR-ADV DX C5870i/C5860i/C5850i/C5840i:  
Basic: 1,138 x 1,162 mm (Right Cover Open with  
Multi-purpose tray extended + Cassette Drawers Open)  
Fully Configured: 1,866 x 1,162 mm (Staple Finisher-AB2/  
Paper Folding/Booklet Finisher-A1 with the extension tray  
extended + Paper Deck Unit-F1 + Cassette Drawers open)

### Weight

iR-ADV DX C5870i: Approx. 108 kg including regular toner  
iR-ADV DX C5860i/C5850i: Approx. 105 kg including  
regular toner  
iR-ADV DX C5840i: Approx. 104 kg including regular  
toner

## PRINT SPECIFICATIONS

### Print Speed (BW/CL)

\* 1 sided only

iR-ADV DX C5870i  
up to 70 ppm (A4, A5\*, A5R, A6R\*), up to 36 ppm (A3),  
up to 42 ppm (A4R)

iR-ADV DX C5860i  
up to 60 ppm (A4, A5\*, A5R, A6R\*), up to 32 ppm (A3),  
up to 36 ppm (A4R)

iR-ADV DX C5850i  
up to 50 ppm (A4, A5\*, A5R, A6R\*), up to 27 ppm (A3),  
up to 30 ppm (A4R)

iR-ADV DX C5840i  
up to 40 ppm (A4, A5\*, A5R, A6R\*), up to 21 ppm (A3),  
up to 24 ppm (A4R)

### Print Resolution (dpi)

1,200 x 1,200

### Page description languages

Standard: UFR II, PCL6, Adobe® PostScript®3™

### Direct Print

Supported file types: PDF, EPS, TIFF/JPEG, and XPS

### Printing from mobile and cloud

AirPrint, Mopria, Universal Print by Microsoft, Canon  
PRINT App, and uniFLOW Online (optional)  
A range of software and MEAP-based solutions are  
available to provide printing from mobile devices or  
internet-connected devices and cloud-based services  
depending on your requirements. Please contact your  
sales representative for further information.

## Fonts

PS fonts: 136 Roman  
PCL fonts: 93 Roman, 10 Bitmap fonts, 2 OCR fonts,  
Andalé Mono WT J/K/S/T\*<sup>1</sup>  
(Japanese, Korean, Simplified and Traditional Chinese),  
Barcode fonts\*<sup>2</sup>  
\*<sup>1</sup> Optional PCL International Font Set-A1 is required.  
\*<sup>2</sup> Optional Barcode Printing Kit-D1 is required.

## Print Features

Secured Print, Secure Watermark, Header/Footer,  
Page Layout, Two-sided Printing, Mixed Paper Sizes/  
Orientations, Front/Back Covers, Toner Reduction, Poster  
Printing, Forced Hold printing, Print Date, Scheduled  
Printing, Printing Using a Virtual Printer

## Operating System

UFR II: Windows® 8.1/10/Server2012/Server2012 R2/  
Server2016/Server2019, Mac OS X(10.11 or later)  
PCL: Windows® 8.1/10/Server2012/Server2012 R2/  
Server2016/Server2019  
PS: 8.1/10/Server2012/Server2012 R2/Server2016/  
Server2019, Mac OS X(10.11 or later)  
PPD: Windows® 8.1/10, Mac OS X(10.10 or later)  
As of Oct. 2020

## COPY SPECIFICATIONS

### Copy Speed (BW & CL)

\* 1 sided only

iR-ADV DX C5870i  
up to 70 ppm (A4, A5\*, A5R, A6R), up to 36 ppm (A3), up  
to 42 ppm (A4R)

iR-ADV DX C5860i  
up to 60 ppm (A4, A5\*, A5R, A6R), up to 32 ppm (A3), up  
to 36 ppm (A4R)

iR-ADV DX C5850i  
up to 50 ppm (A4, A5\*, A5R, A6R), up to 27 ppm (A3), up  
to 30 ppm (A4R)

iR-ADV DX C5840i  
up to 40 ppm (A4, A5\*, A5R, A6R), up to 21 ppm (A3), up  
to 24 ppm (A4R)

### First-Copy-Out Time (A4, BW/CL)

iR-ADV DX C5870i:  
Approx. 2.7 / 3.7 seconds or less

iR-ADV DX C5860i:  
Approx. 2.9 / 4.2 seconds or less

iR-ADV DX C5850i:  
Approx. 3.4 / 4.9 seconds or less

iR-ADV DX C5840i:  
Approx. 4.1 / 6.1 seconds or less

### Copy resolution (dpi)

#### Multiple Copies

#### Copy Density

#### Magnification

600 x 600  
Up to 999 copies  
Automatic or Manual (9 Levels)  
Variable zoom: 25% to 400% (1% Increments)  
Preset reduction/enlargement: 25%, 50%, 70%, 100%(1:1),  
141%, 200%, 400%

## Copy Features

Preset R/E Ratios by Area, Two-Sided, Density  
Adjustment, Original Type Selection, Interrupt Mode,  
Book to Two Pages, Two-sided Original, Job Build, N  
on 1, Add Cover, Insert Sheets, Different Size Originals,  
Page Numbering, Copy Set Numbering, Sharpness, Erase  
Frame, Secure Watermark, Print Date, Gutter, Print &  
Check, Negative/Positive, Repeat Images, Merge Job  
Blocks, Mirror Image, Store in Mail Box, Superimpose  
Image, Copy ID Card, Skip Blank Pages, Free Size Original,  
Color Mode, Reserved Copy, Copy Sample

## SCAN SPECIFICATION

### Type

Single-pass Duplexing Automatic Document Feeder\*  
[2-sided to 2-sided (Automatic)]

\* Detect Feeder Multi Sheet Feed is supported.

up to 200 Sheets

### Document Feeder Paper Capacity (80 gsm)

### Acceptable Originals and weights

Platen: Sheet, Book, and 3-Dimensional Objects

Document Feeder media weight:

1-sided scanning: 38 to 220 gsm (BW, CL)

2-sided scanning: 38 to 220 gsm (BW, CL)

\* An acceptable weights of A6R or smaller is 50 to 220gsm.

Platen scanning size: up to 297.0 x 431.8 mm

Document Feeder media size:

A3, A4, A4R, A5, A5R, A6R, B4, B5, B5R, B6R

Custom size: 70.0 x 139.7 mm to 304.8 x 431.8 mm

### Scan Speed (ipm: BW/CL; A4)

1-sided Scanning:

135/135 (300 x 300 dpi, send), 80/80

(600 x 600 dpi, copy),

2-sided Scanning:

270/270 (300 x 300 dpi, send), 160/90

(600 x 600 dpi, copy)

### Scan Resolution (dpi)

Scan for Copy: 600 x 600

Scan for Send: (Push) 600 x 600 (SMB/FTP/WebDAV/  
IFAX), (Pull) 600 x 600

Scan for Fax: 600 x 600

### Pull Scan Specifications

Color Network ScanGear2. For both TWAIN and WIA

Supported OS: Windows® 8.1/10/Server2012/  
Server2012 R2/Server 2016

As of Mar. 2020

### Scan Method

Push Scan, Pull Scan, Scan to Box, Scan to Advanced  
Space, Scan to Network, Scan to USB Memory Key, Scan  
to Mobile devices, Scan to cloud (uniFLOW Online, Cloud  
Connector - Optional)

## SEND SPECIFICATIONS

### Destination

Standard: E-mail/Internet FAX (SMTP\*), SMB3.0, FTP,  
WebDAV, Mail Box  
Optional: Super G3 FAX, IP Fax

\* OAuth 2.0 authentication method available for Microsoft 365 and  
Google Workspace

### Address Book

LDAP (2,000)/Local (1,600)/Speed dial (200)

### Send resolution (dpi)

Push: up to 600 x 600

Pull: up to 600 x 600

## Communication protocols

File: FTP(TCP/IP), SMB3.0 (TCP/IP), WebDAV

E-mail/I-Fax: SMTP, POP3



# TECHNICAL SPECIFICATIONS

# imageRUNNER ADVANCE DX C5800 Series

<b>File Format</b>	TIFF, JPEG, PDF (Limited Color, Compact, Searchable, Apply policy, Optimize for Web, PDF/A-1b, Trace & Smooth, Encrypted, Device Signature, User Signature), XPS(Compact, Searchable, Device Signature, User Signature), Office Open XML (PowerPoint, Word)	<b>ENVIRONMENTAL SPECIFICATIONS</b>	
<b>Universal Send Features</b>	Original Type Selection, Two-sided Original, Book to Two Pages, Different-size Originals, Density Adjustment, Sharpness, Copy Ratio, Erase Frame, Job Build, Delayed Send, Preview, Job Done Notice, File Name, Subject/Message, Reply-to, E-mail Priority, TX Report, Original Content Orientation, Skip Blank Pages	<b>Operating Environment</b>	Temperature: 10 to 30 °C Humidity: 20 to 80 % RH (Relative Humidity) 220-240 V, 50/60 Hz, 6 A
<b>FAX SPECIFICATIONS</b>	(Optional)	<b>Power source</b>	Maximum: Approx. 2,000 W (iR-ADV DX C5870i) Approx. 1,800 W (iR-ADV DX C5860i/C5850i/C5840i) Copying (with DADF continuous scan): Approx. 943 W <sup>*1</sup> Standby: Approx. 53.4 W <sup>*1</sup> Sleep mode: Approx. 0.8 W <sup>*2</sup>
<b>Maximum Number of Connection Lines</b>	2 (2nd line optional)	<b>Power consumption</b>	<sup>*1</sup> Reference value: measured one unit <sup>*2</sup> 0.8 W is not available in all circumstances due to certain settings.
<b>Modem Speed</b>	Super G3: 33.6 kbps G3: 14.4 kbps	<b>Noise levels (BW/CL)</b>	Typical Electricity Consumption (TEC)* : iR-ADV DX C5870i: 0.86 kWh iR-ADV DX C5860i: 0.71 kWh iR-ADV DX C5850i: 0.58 kWh iR-ADV DX C5840i: 0.46 kWh <sup>* As per USA Energy Star 3.0</sup>
<b>Compression Method</b>	MH, MR, MMR, JBIG		Sound Power Level (LWA,m) Active (BW) (1-sided) iR-ADV DX C5870i: 66 dB*, Kv 3 dB* iR-ADV DX C5860i: 64 dB*, Kv 3 dB* iR-ADV DX C5850i: 62 dB*, Kv 3 dB* iR-ADV DX C5840i: 61 dB*, Kv 3 dB*
<b>Resolution (dpi)</b>	400 x 400 (Ultra Fine), 200 x 400 (Super Fine), 200 x 200 (Fine), 200 x 100 (Normal)		<sup>* Reference value: measured only one unit with ISO7779, described with ISO9296 (2017)</sup> Sound Pressure (LpAm) Bystander's position: Active (BW/CL) (1-sided) iR-ADV DX C5870i: 52 dB*/52 dB* iR-ADV DX C5860i: 50 dB*/51 dB* iR-ADV DX C5850i: 48 dB*/49 dB* iR-ADV DX C5840i: 47 dB*/47 dB*
<b>Sending/Receiving Size</b>	Sending: A3, A4, A4R, A5 <sup>*1</sup> , A5R <sup>*1</sup> , B4, B5 <sup>*2</sup> , B5R <sup>*1</sup> Receiving: A3, B4, A4, A4R, A5R, B5, B5R <sup>*1</sup> Sent as A4 <sup>*2</sup> Sent as B4 short		Stand-by iR-ADV DX C5870i/C5860i/C5850i: 23 dB* <sup>* Reference value: measured only one unit with ISO7779, described with ISO9296 (2017)</sup>
<b>FAX memory</b>	Up to 30,000 pages (2,000 jobs)	<b>Standards</b>	
<b>Speed dials</b>	Max. 200	<b>CONSUMABLES</b>	
<b>Group dials/destinations</b>	Max. 199 dials	<b>Toner Cartridges</b>	C-EXV 58 Toner BK/C/M/Y C-EXV 58L Toner C/M/Y
<b>Sequential broadcast</b>	Max. 256 addresses	<b>Toner Yield (Estimated Yield @5% coverage)</b>	C-EXV 58 Toner BK: 71,000 pages C-EXV 58 Toner C/M/Y: 60,000 pages C-EXV 58L Toner C/M/Y: 26,000 pages
<b>Memory backup</b>	Yes	<b>SOFTWARE AND PRINTER MANAGEMENT</b>	For detailed information please visit our website <a href="https://www.canon-europe.com/business/">https://www.canon-europe.com/business/</a> Universal Login Manager (ULM) uniFLOW Online <sup>*</sup>
<b>Fax Features</b>	Sender's Name (TTI), Selecting the Telephone Line (when sending fax), Direct Send, Delayed Send, Preview, Job Done Notice, TX Report, Interrupt Transmission, Sequential Broadcasting, Password/Subaddress Sending, Confidential Mailbox, 2 on 1 Log	<b>Tracking and reporting</b>	<sup>* For more information, please refer to <a href="#">uniFLOW Online</a></sup>
<b>STORE SPECIFICATIONS</b>		<b>Remote management tools</b>	iWEMC eMaintenance Content Delivery System Network ScanGear
<b>Mail Box (Number supported)</b>	100 User Inboxes, 1 Memory RX Inbox, 50 Confidential Fax Inboxes Maximum 10,000 Pages (2,000 jobs) Stored	<b>Scanning software</b>	Canon Driver Configuration Tool MEAP (Multifunctional Embedded Application Platform) Kofax PowerPDF Advanced (Optional)
<b>Advanced Space</b>	Communication Protocol: SMB or WebDAV Supported Client PC: Windows <sup>*</sup> 8.1/10 Concurrent Connections (Max.): SMB:64, WebDAV:3 Standard:16 GB (With option: max. 480GB)	<b>Optimisation tools</b>	
<b>Advanced Space available disc space</b>	Standard:16 GB (With option: max. 480GB)	<b>Platform</b>	
<b>Advanced Space Features</b>	Authentication for Advanced Space Log-in, Sort Function, Printing a PDF File with a Password, imageWARE Secure Audit Manager Support, Search, File Preview, Authentication Management, Open to public, URI TX, Backup/Restore	<b>Document Publishing</b>	
<b>SECURITY SPECIFICATIONS</b>		<b>FIERY PRINT CONTROLLER SPECIFICATIONS (EMBEDDED)</b>	For full specifications & options, please visit the Canon website Optional on all models imagePASS-R1 (Embedded) 1200 x 1200, 600 x 600 Adobe PS3, PCL6 4GB (1x4GB) 500 GB SATA Intel Pentium G4400 (3.3GHz) FS400
<b>Authentication and Access Control (Activation is required)</b>	User Authentication (Picture Login, Picture and PIN Login, Card Login <sup>*</sup> , Username and Password Login, Function Level Login, Mobile Login), Department ID Authentication (Department ID and PIN Login, Function Level Login), uniFLOW Online <sup>**</sup> (PIN Login, Picture Login, Picture and PIN Login, Card Login <sup>*</sup> , Card and PIN Login, Username and Password Login, Department ID and PIN Login, Function Level Login), Access Management System (Access Control), Cloud Connector <sup>*</sup> (PIN Login), Microsoft Entra ID (PIN Login, Card Login), Two-Factor Authentication at LUI/ROI <sup>*</sup> Card readers are optional, please refer to Hardware Accessories <sup>**</sup> Subscription required	<b>Name</b>	
<b>Document Security</b>	Print Security (Secure Print, Encrypted Secure Print, Forced Hold Printing, uniFLOW Secure Print <sup>†</sup> ), Receive Data Security (Confidential Fax Inbox Forwarding Received Documents Automatically), Scan Security (Encrypted PDF, Device Signature PDF/XPS, User Signature PDF/XPS, Adobe LiveCycle <sup>®</sup> Rights Management ES2.5 Integration), BOX Security (Mail Box Password Protected, Advanced Space Access Control), Send Data Security (Setting for requesting password input per transmission, Restricted E-mail/File send functions, Confirming FAX number, Allow/Restrict Fax Driver Transmissions, Allow/Restrict Sending from History, S/MIME Support), Document Tracking (Secure Watermark) <sup>†</sup> Requires uniFLOW Online / uniFLOW	<b>Print Resolution (dpi)</b>	
<b>Network Security</b>	TLS 1.3, IPsec, IEEE802.1X authentication, SNMP V3.0, Firewall Functionality (IP/MAC Address Filtering), Dual Network Support (Wired LAN/Wireless LAN, Wired LAN/Wired LAN), Disabling Unused Functions (Enabling/Disabling Protocols/Applications, Enabling/Disabling Remote UI, Enabling/Disabling USB Interface), G3 FAX separation from LAN, USB Port separation from LAN, Prohibit the execution of files stored in Advanced Box in the MFP, Scan and Send -Virus Concerns for E-mail Reception	<b>Page Description Language(s)</b>	
<b>Device Security</b>	Protecting SSD Data [SSD Data Encryption (FIPS 140-3), SSD Lock], Standard SSD Initialize (NIST 800-88 PURGE LEVEL), Trusted Platform Module (TPM 2.0), Job Log Conceal Function, Protecting MFD Software Integrity, Checking MFD Software Integrity & Platform Firmware Resiliency (NIST SP800-193) with Automatic System Recovery (Verify System at Startup, Runtime Intrusion Detection enabled with Trellix Embedded Control), HCD-PP	<b>Memory</b>	
<b>Device Management and Auditing</b>	Administrator Password, Digital Certificate And Key Management, Audit Log, Cooperating with External Security Audit System (Security Information and Event Management), Image Data Logging, Security Policy Setting	<b>Hard Disk Drive</b>	
		<b>Processor Speed</b>	
		<b>System</b>	
		<b>PAPER SUPPLY OPTIONS</b>	
		<b>Cassette Feeding Unit-AQ1</b>	Paper Capacity: 2 x 550 sheets (80 gsm) Paper Type: Thin, Plain, Recycled, Color, Heavy, Bond, Transparency, Pre-punched, Letterhead Paper Size: A3, A4, A4R, A5, A5R, A6R, B4, B5, B5R Custom size: 98.0 x 148.0 mm to 304.8 x 457.2 mm
		<b>High Capacity Cassette Feeding Unit-C1</b>	Paper Capacity: 2,450 sheets (80 gsm) Paper Type: Thin, Plain, Recycled, Color, Heavy, Bond, Pre-punched, Letterhead Paper Size: A4 Paper Weight: 52 to 256 gsm Dimensions (W x D x H): 620 x 660 x 251 mm (attached to the main unit) Weight: Approx. 22 kg
		<b>Paper Deck Unit-F1</b>	Paper Capacity: 2,700 sheets (80 gsm) Paper Type: Thin, Plain, Color, Recycled, Heavy, Pre-punched Paper Size: A4, B5 Paper Weight: 52 to 256 gsm Dimensions (W x D x H): 620 x 660 x 251 mm (attached to the main unit) Weight: Approx. 29 kg
		<b>OUTPUT OPTIONS*</b>	<sup>* Paper capacity may vary with different paper type/size.</sup> Capacity (with 80gsm paper): A4, A5, A5R, A6R, B5: 250 sheets SRA3, A3, A4R, B4, B5R: 100 sheets Paper Weight: 52 to 300 gsm
		<b>1st Copy Tray Kit-A1</b>	

# TECHNICAL SPECIFICATIONS

# imageRUNNER ADVANCE DX C5800 Series

## Inner 2way Tray-M1

Tray Capacity (with 80 gsm paper)  
Upper tray: A4, A5, A5R, A6R, B5: 100 sheets  
SRA3, A3, A4R, B4, B5R: 50 sheets  
Lower tray: A4, A5, A5R, A6R, B5: 100 sheets  
SRA3, A3, A4R, B4, B5R: 100 sheets

Paper Weight: 52 to 300 gsm  
Dimensions (W x D x H): 428 x 405 x 88 mm  
Weight: Approx. 0.7 kg

## 3rd Copy Tray Kit-A1

Capacity (with 80gsm paper):  
A4, A5R, B5: 100 sheets  
A3, A4R, B4, B5R: 75 sheets  
Paper Weight: 52 to 300 gsm  
Dimensions (W x D x H): 442 x 373 x 176 mm  
(attached to the main unit, when the extension tray is extended)  
Weight: 0.5 kg

## Inner Finisher-L1

(Not supported for iR-ADV DX C5870)

Tray Capacity (with 80gsm paper):  
Upper Tray: SRA3, A3, A4, A4R, A5, A5R, A6R, B4, B5, B5R: approx 45 sheets  
Lower Tray: A4, A5, A5R, B5: approx. 500 sheets,  
SRA3, A3, A4R, B4, B5R: 250 sheets,  
A6R: 30 sheets  
Envelope: 10 sheets

Paper Weight: 52 to 300 gsm  
Staple Position: Corner, Double  
Staple Capacity: (52 to 90 gsm paper)  
A4, B5: 50 sheets  
A4R: 40 sheets  
A3, B4: 30 sheets  
Eco Staple:  
A3, A4, B4, B5: 10 sheets (52 to 64 gsm)  
8 sheets (65 to 81.4 gsm)  
6 sheets (82 to 105 gsm)

Staple On Demand: 40 sheets (80 gsm)  
Dimensions (W x D x H): 743 x 525 x 225 mm  
(attached to the main unit, when the extension tray is extended)  
Weight: Approx. 9.1 kg

## Staple Finisher-AB2

(Requires Buffer Pass Unit-P2)  
Tray Capacity (with 80gsm paper):  
Upper Tray: A4, A5, A5R, A6R, B5: approx. 250 sheets,  
SRA3, A3, A4R, B4, B5R: approx. 125 sheets  
Lower Tray: A4, A5, A5R, B5: 3,000 sheets,  
SRA3, A3, A4R, B4, B5R: 1,500 sheets,  
A6R: 250 sheets  
Envelopes: Monarch: 30 sheets, COM10 No.10,  
DL, ISO-C5: 100 sheets

Paper Weight:  
Upper Tray 52 to 256 gsm,  
Lower Tray 52 to 300 gsm  
Staple Position: Corner, Double  
Staple Capacity: (52 to 90 gsm)  
A4, B5: 50 sheets  
A4R: 40 sheets  
A3, B4: 30 sheets  
Eco Staple:  
A3, A4: 10 sheets (52 to 64 gsm)  
8 sheets (65 to 81.4 gsm)  
6 sheets (82 to 105 gsm)

Staple On Demand: 50 sheets (52 to 90 gsm)  
Dimensions (W x D x H): 637 x 623 x 1,142 mm  
(when the extension tray is extended)  
Weight: Approx. 31 kg

## Paper Folding/ Booklet Finisher-A1

(Requires Buffer Pass Unit-P2)  
(Includes the above Staple Finisher-AB2 basic staple specifications.)  
Saddle Stitch paper size: A3, A4R, B4  
Saddle Stitch Staple Capacity: 20 sheets x 10 sets  
(52 to 81.4 gsm) (including 1 cover sheet 52 to 256 gsm)  
V-fold Capacity: up to 3 sheets (52 to 105 gsm)  
C-fold Capacity: up to 5 sheets (52 to 128 gsm)  
Dimensions (W x D x H): 637 x 623 x 1,142 mm  
(when the extension tray is extended)  
Weight: Approx. 57 kg

## Paper Folding Unit-L1

(Requires Buffer Pass Unit-P2 & external finisher)  
Paper size: A3, A4, B4  
Z-fold Capacity: 1 sheet (52 to 105 gsm)  
Dimensions (W x D x H): 201 x 579 x 896 mm  
Weight: Approx. 12 kg

## Inner 2/4 Hole Puncher-D1

(Not supported for iR-ADV DX C5870)

(Requires the Inner Finisher-L1)  
Two or Four Holes  
Acceptable Punch Paper Weight: 52 to 300 gsm  
Acceptable Punch Paper Size:  
Two holes: A3, A4, A4R, A5, B4, B5, B5R  
Four holes: A3, A4

## Inner 4 Hole Puncher-D1

(Not supported for iR-ADV DX C5870)

(Requires the Inner Finisher-L1)  
Four Holes  
Acceptable Punch Paper Weight: 52 to 300 gsm  
Acceptable Punch Paper Size:  
Four holes: A3, A4, A4R, A5, B4, B5, B5R

## 2/4 Hole Puncher Unit-A1

(Requires either the Staple Finisher-AB2 or Paper Folding/Booklet Finisher-A1)  
Two or Four Holes  
Acceptable Punch Paper Weight: 52 to 300 gsm  
Acceptable Punch Paper Size:  
Two holes: A3, A4, A4R, A5, B4, B5, B5R  
Four holes: A3, A4

## 4 Hole Puncher Unit-A1

(Requires either the Staple Finisher-AB2 or Paper Folding/Booklet Finisher-A1)  
Four Holes  
Acceptable Punch Paper Weight: 52 to 300 gsm  
Acceptable Punch Paper Size:  
Four holes: A3, A4, A4R, A5, B4, B5, B5R

## HARDWARE ACCESSORIES

### Card Readers

Various card readers available e.g. MiCard Plus.  
Please contact local Canon Office for more details.

Copy Card Reader Attachment-B7  
IC Card Reader Box for Numeric Keypad-A1  
Copy Card Reader-F1  
Printer Cover-M2  
Tab Feeding Attachment-F1  
Buffer Pass Unit-P2  
Utility Tray-B1  
Numeric Keypad-A2

### Others

## SECURITY OPTIONS

### Data Security

256GB SSD-A1  
1TB SSD-A1  
Memory Mirroring Kit-A1

## SYSTEM AND CONTROLLER OPTIONS

Print Accessories  
Barcode Printing  
EFI-Fiery Based Controller  
EFI-Fiery Based Controller Options

### System Accessories

PCL International Font Set-A1  
Barcode Printing Kit-D1  
imagePASS-R1  
Hot Folders License  
Fiery Compose  
Fiery Impose  
Fiery Impose and Compose  
Serial Interface Kit-K3  
Copy Control Interface Kit-A1  
Connection Kit-A3 for Bluetooth LE  
Super G3 FAX Board-AX1  
Super G3 2nd Line Fax Board-AX1  
Remote Fax Kit-A1  
IP FAX Expansion Kit-B1

### Fax Accessories

## OTHER OPTIONS

### Accessibility Accessories

ADF Access Handle-A1  
Voice Guidance Kit-G1  
Voice Operation Kit-D1  
Staple Cartridge-Y1 (2 x 2,000pcs)\*  
Staple-P1 (2 x 5,000pcs)  
\*For Booklet Finisher only  
Antimicrobial Film\* - Various Sheets designed to fit the devices most common touch points.  
\*Application by a Service Engineer is recommended

### Consumables

### Device Protection

## Software & Solutions



## Certifications and compatibility



Canon Inc.  
canon.com

Canon Europe  
canon-europe.com

English edition  
© Canon Europa N.V., 2024