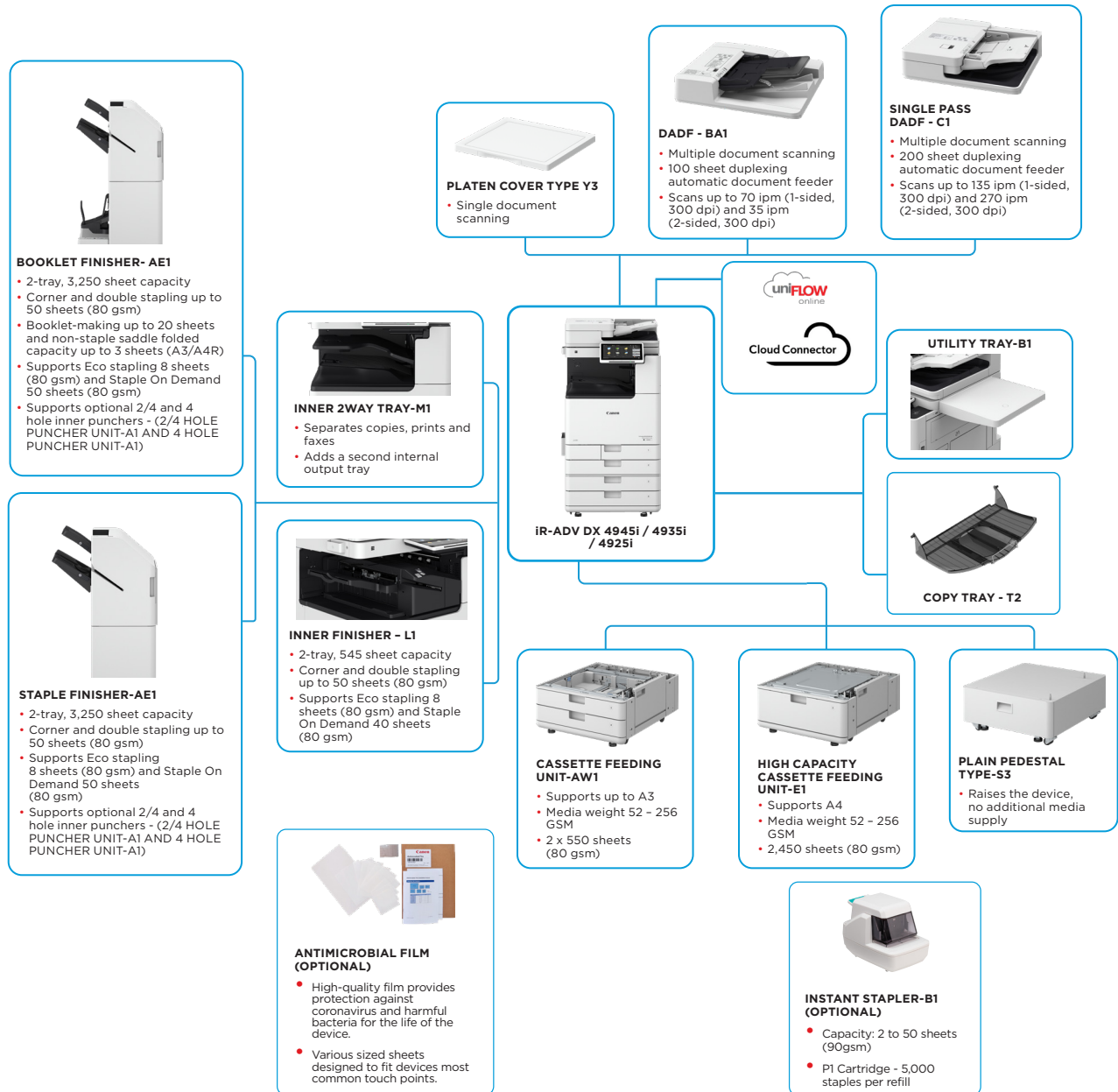


imageRUNNER ADVANCE DX 4900 Series

SMART MONO A3 MULTIFUNCTION DEVICES FOR EFFICIENT, HIGH-QUALITY DOCUMENT PROCESSING



MAIN CONFIGURATION OPTIONS



This flat configuration is for illustration purpose only. For a complete list of options and the exact compatibility relationships, please refer to the online [product configurator](#).

The Unified Firmware Platform (UFP) ensures that the latest feature upgrades and protection are available, for an enhanced user experience across the entire iR ADVANCE DX portfolio.



TECHNICAL SPECIFICATIONS

imageRUNNER ADVANCE DX 4900 Series

MAIN UNIT		Print Resolution (dpi)	1,200 ×600, 1,200 ×1,200 (half-speed)
Machine type	A3 Monochrome Laser Multifunctional	Page description languages	Standard: UFR II, PCL6 Optional: Adobe® PostScript®3™
Core functions	Print, Copy, Scan, Send, Store and Optional Fax	Direct Print (RUI)	PDF, EPS, TIFF/JPEG, XPS
Processor	1.8GHz Dual Core Processor	Printing from mobile and cloud applications	AirPrint, Mopria, Universal Print by Microsoft, Canon PRINT app, Cloud Connector and uniFLOW Online (optional) A range of software and MEAP-based solutions are available to provide printing from mobile devices or internet-connected devices and cloud-based services depending on your requirements. Please contact your sales representative for further information
Control Panel	10.1 inch TFT LCD WSVGA Color Touch panel	OS Standard Printing	Android/Windows® 10/Windows® 11/Chrome OS/macOS (11.2.2 or later), iOS (15.2 or later), iPadOS
Memory	Standard: RAM 4.5 GB	Fonts	PS fonts: 136 Roman PCL fonts: 93 Roman, 10 Bitmap fonts, 2 OCR fonts, Andale Mono WT J/K/S/T*1 (Japanese, Korean, Simplified and Traditional Chinese), Barcode fonts*2
Storage	Standard: (SSD) 256 GB Optional: (SSD) 1TB	Print Features	*1 Optional PCL International Font Set-A1 is required. *2 Optional Barcode Printing Kit-D1 is required.
Interface Connection	NETWORK Standard: 1000Base-T/100Base-TX/10Base-T Optional: Wireless LAN (IEEE 802.11 b/g/n) OTHERS Standard: USB 2.0 (Host) x1, USB 3.0 (Host) x1, USB 2.0 (Device) x1; Optional: Serial Interface, Copy Control Interface	Operating System	UFR II: Windows®10/11/Server 2012/Server 2012 R2/Server 2016/Server 2019/Server 2022, MAC OS X (10.13 or later) PCL: Windows®10/11/Server 2012/Server 2012 R2/Server 2016/Server 2019/Server 2022, MAC OS X (10.13 or later) PS: Windows®10/11/Server 2012/Server 2012 R2/Server 2016/Server 2019/Server 2022, MAC OS X (10.13 or later) PPD: Windows®10/11, MAC OS X (10.13 or later)
Paper Supply Capacity (A4, 80gsm)	Standard: 1200 sheets 100 sheets: Multi-purpose tray x 1 550 sheets: Standard Cassette x 2 Maximum: 3,650 sheets (with High Capacity Cassette Feeding Unit-E1)	COPY SPECIFICATIONS	
Paper output capacity (A4, 80gsm)	Standard: 250 sheets Maximum: 3,450 sheets (with Staple Finisher-AE1 or Booklet Finisher-AE1 and Copy Tray-T2)	Copy Speed	iR-ADV DX 4945i: 1-sided: Up to 45 ppm (A4, A5, A5R, A6R), Up to 22 ppm (A3), Up to 32 ppm (A4R) iR-ADV DX 4935i: 1-sided: Up to 35 ppm (A4, A5, A5R, A6R), Up to 17 ppm (A3), Up to 23 ppm (A4R) iR-ADV DX 4925i: 1-sided: Up to 25 ppm (A4, A5, A5R, A6R), Up to 15 ppm (A3), Up to 20 ppm (A4R)
Finishing Capabilities	Collate, Group, Offset, Staple, Saddle Stitch, Hole Punch, Eco Staple, Staple On Demand * Finishing capabilities vary depending on the options connected.	First-Copy-Out Time (A4)	iR-ADV DX 4945i: Approx. 4.6 seconds or less iR-ADV DX 4935i: Approx. 5.5 seconds or less iR-ADV DX 4925i: Approx. 6.1 seconds or less
Supported Media Types	Multi-purpose tray: Thin, Plain, Heavy*, Recycled, Coated*, Color, Tracing, Bond, Transparency, Label, Pre-punched, Letterhead, Envelope * SRA3 is unsupported for Coated (257-300gsm) and Heavy (257-300gsm) paper. Upper Cassette: Thin, Plain, Heavy, Recycled, Color, Bond, Transparency, Pre-punched, Letterhead, Envelope Lower Cassette: Thin, Plain, Heavy, Recycled, Color, Bond, Transparency, Pre-punched, Letterhead, Envelope* * Envelope Feeder Attachment A (standard) is required.	Copy resolution (dpi)	600 × 600
Supported Media Sizes	Multi-purpose tray: Standard size: SRA3, A3, A4, A4R, A5, A5R, A6R, B4, B5, B5R Custom size: 98.4 × 139.7 mm to 320.0 × 457.2 mm Free size: 100.0 × 148.0 mm to 304.8 × 457.2 mm Envelopes: COM10 No.10, Monarch, ISO-C5, DL Envelope custom size: 98.0 × 98.0 mm to 320.0 × 457.2 mm Upper Cassette: Standard size: A4, A5, A5R, A6R, B5 Custom Size: 105.0 × 148.0 mm to 297.0 × 215.9 mm Envelopes: ISO-C5 Lower Cassette: Standard size: A3, A4, A4R, A5, A5R, A6R, B4, B5, B5R Custom Size: 105.0 × 148.0 mm to 304.8 × 457.2 mm Envelopes*: COM10 No.10, Monarch, DL * Envelope Attachment A (standard) is required.	Multiple Copies	Up to 9,999 copies
Supported Media Weights	Multi-purpose tray: 52 to 300 gsm* * SRA3 is unsupported for Coated (257-300gsm) and Heavy (257-300gsm) paper. Supported paper weight with Media Adjustment Kit-A1: 60-300 gsm Upper/Lower Cassette: 52 to 256 gsm Duplex: 52 to 220 gsm	Copy Density	Automatic or Manual (9 Levels)
Warm-up Time (Quick start mode: ON)	Quick Startup Mode: 4 seconds or less* * Time from device power-on to when the copy icon appears and is enabled to operate on the touch panel display. From Sleep Mode: 10 seconds or Less From Power On: 10 seconds or less* * Time from device power-on, until copy ready (not print reservation)	Magnification	Variable zoom: 25% to 400% (1% Increments) Preset reduction/enlargement: 25%, 50%, 70%, 100%(1:1), 141%, 200%, 400%
Dimensions (W x D x H)	With Platen Cover-Y3: 565 x 692 x 788 mm With Single Pass DADF-C1: 565 x 722 x 897 mm With DADF-BA1: 565 x 719 x 891 mm	Copy Features	Preset R/E Ratios by Area, Two-Sided, Density Adjustment, Original Type Selection, Interrupt Mode, Book to Two Pages, Two-sided Original, Job Build, N on 1, Add Cover, Insert Sheets, Different Size Originals, Page Numbering, Copy Set Numbering, Sharpness, Erase Frame, Secure Watermark, Print Date, Gutter, Print & Check, Negative/Positive, Repeat Images, Merge Job Blocks, Mirror Image, Store in Mail Box, Copy ID Card, Skip Blank Pages, Free Size Original, Color Mode, Reserved copy, Copy Sample
Installation Space (W x D)	Basic: 978 x 1119 mm (with Single Pass DADF-C1 + right door & Multi-purpose tray extended + Paper cassette open) 978 x 1116 mm (with DADF-BA1 + right door & Multi-purpose tray extended + Paper cassette open) Fully Configured: 1,651 x 1,119 mm (with Single Pass DADF-C1 + Staple Finisher-AE1/Booklet Finisher-AE1 + Copy Tray-T2 extended + paper cassette open) 1,651 x 1,116 mm (with DADF-BA1 + Staple Finisher-AE1/Booklet Finisher-AE1 + Copy Tray-T2 extended + paper cassette open)	SCAN SPECIFICATIONS	
Weight* *including toner	With Platen Cover-Y3: Approx. 61 kg With DADF-BA1: Approx. 68 kg With Single Pass DADF-C1: Approx. 74 kg	Type	Standard: Color Platen Optional: Platen Cover-Y3, Single Pass DADF-C1* or DADF-BA1 [2-sided to 2-sided (Automatic with DADF)] *Detect Feeder Multi Sheet Feed is supported DADF: Duplexing Automatic Document Feeder
PRINT SPECIFICATIONS		Document Feeder Paper Capacity (80 gsm)	Single Pass DADF-C1: up to 200 Sheets DADF-BA1: up to 100 Sheets
Print Speed (BW)	iR-ADV DX 4945i: 1-sided: Up to 45 ppm (A4, A5, A5R, A6R), Up to 22 ppm (A3), Up to 32 ppm (A4R) iR-ADV DX 4935i: 1-sided: Up to 35 ppm (A4, A5, A5R, A6R), Up to 17 ppm (A3), Up to 23 ppm (A4R) iR-ADV DX 4925i: 1-sided: Up to 25 ppm (A4, A5, A5R, A6R), Up to 15 ppm (A3), Up to 20 ppm (A4R)	Acceptable Originals and weights	Platen: Sheet, Book, and 3-Dimensional Objects Document Feeder media weight: Single Pass DADF-C1: 1-sided scanning: 38 to 220 gsm 2-sided scanning: 38 to 220 gsm *An acceptable weights of A6R or smaller is 50 to 220gsm. DADF-BA1: 1-sided scanning: 38 to 128 gsm (BW), 64 to 128 gsm (CL) 2-sided scanning: 50 to 128 gsm (BW), 64 to 128 gsm (CL)
		Supported media sizes	Platen: max. scanning size: 297.0 × 431.8 mm Single Pass DADF-C1: A3, A4, A4R, A5, A5R, A6R, B4, B5, B5R, B6R, Custom size: 69.9 × 139.7 mm to 304.8 × 431.8 mm DADF-BA1: A3, A4, A4R, A5, A5R, B4, B5, B5R, B6, Custom size: 139.7 × 128 mm to 297.0 × 431.8 mm
		Scan Speed (ipm: BW/CL; A4)	Single Pass DADF-C1: 1-sided Scanning: 135/135 (300 × 300 dpi, send), 80/80 (600 × 600 dpi, copy) 2-sided Scanning: 270/270 (300 × 300 dpi, send), 160/90 (600 × 600 dpi, copy) DADF-BA1: 1-sided Scanning: 70/70 (300 × 300 dpi, send), 51/51 (600 × 600 dpi, copy) 2-sided Scanning: 35/35 (300 × 300 dpi, send), 25.5/25.5 (600 × 600 dpi, copy)
		Scan Resolution (dpi)	Scan for Copy: 600 × 600 Scan for Send: (Push) 600 × 600 (SMB/FTP/WebDAV/IFAX), (Pull) 600 × 600 Scan for Fax: 600 × 600



TECHNICAL SPECIFICATIONS

imageRUNNER ADVANCE DX 4900 Series

Pull Scan Specifications	Colour Network ScanGear2. For both TWAIN and WIA Supported OS : Windows®10/11/Server 2012/Server 2012 R2/Server 2016/Server 2019/Server 2022	Network Security	TLS 1.3, IPsec, IEEE802.1X authentication, SNMP V3.0, Firewall Functionality (IP/MAC Address Filtering), WPA3 support, Dual Network Support (Wired LAN/Wireless LAN, Wired LAN/Wired LAN), Disabling Unused Functions (Enabling/Disabling Protocols/Applications, Enabling/Disabling Remote UI, Enabling/Disabling USB Interface), Communication Line Separation (G3 FAX, USB Port, Advanced Space, Scan and Send -Virus Concerns for E-mail Reception)
Scan Method	Push Scan, Pull Scan, Scan to Box, Scan to Advanced Space, Scan to Network, Scan to USB Memory Key, Scan to Mobile device, Scan to cloud (uniFLOW Online/Cloud Connector - optional)	Device Security	Protecting SSD Data [SSD Data Encryption (FIPS 140-3), SSD Lock], Standard SSD Initialize, Initialize (NIST 800-88 PURGE LEVEL), Trusted Platform Module (TPM 2.0), Job Log Conceal Function, Protecting MFP Software Integrity, Checking MFD Software Integrity & Platform Firmware Resiliency (NIST SP800-193) with Automatic System Recovery (Verify System at Startup, Runtime Intrusion Detection enabled with Trelix Embedded Control), HCD-PP Common Criteria Certification
SEND SPECIFICATIONS		Device Management and Auditing	Administrator Password, Remote Management Two-factor Authentication, Digital Certificate And Key Management, Audit Log, Cooperating with External Security Audit System (Security Information and Event Management), Image Data Logging, Security Policy Setting
Destination	Standard: E-mail/Internet FAX (SMTP*), SMB3.1.1, FTP, WebDAV, Mail Box Optional: Super G3 FAX, IP Fax * OAuth 2.0 authentication method available for Microsoft 365 and Google Workspace.	ENVIRONMENTAL SPECIFICATIONS	
Address Book	LDAP (2,000)/Local (1,600)/Speed dial (200)	Operating Environment	Temperature: 10 to 30 °C Humidity: 20 to 80 % RH (Relative Humidity)
Send resolution (dpi)	Push: up to 600 x 600 Pull: up to 600 x 600	Power Source	220-240V 50/60Hz 5A
Communication protocol	FTP: (TCP/IP), SMB3.1.1 (TCP/IP), WebDAV Email/Fax: SMTP(send), POP3(receive)	Power Consumption	Maximum: Approx. 1,500W Copying (with DADF continuous scan): Approx. 666W* Standby: Approx. 45.5W* Sleep Mode: Approx. 0.8W* * Reference value: measured one unit ** 0.8W sleep mode is not available in all circumstances due to certain settings.
File Format	Standard: TIFF, JPEG, PDF(Compact, Searchable, Apply policy, Optimize for Web, PDF/A-1b, Trace & Smooth, Encrypted, Device Signature, User Signature), XPS(Compact, Searchable, Device Signature, User Signature), Office Open XML (PowerPoint, Word)	Typical Electricity Consumption (TEC)* :	Typical Electricity Consumption (TEC)* : iR-ADV DX 4945i: 0.45 kWh iR-ADV DX 4935i: 0.34 kWh iR-ADV DX 4925i: 0.25 kWh *As per USA Energy Star 3.0 For detailed information relating to Erp:Lot6/26 regulation, please go to: https://www.canon-europe.com/for_work/lot26/
Universal Send Features	Original Type Selection, Two-sided Original, Book to Two Pages, Different-size Originals, Density Adjustment, Sharpness, Copy Ratio, Erase Frame, Job Build, Delayed Send, Preview, Job Done Notice, File Name, Subject/Message, Reply-to, E-mail Priority, TX Report, Original Content Orientation, Skip Blank Originals	Noise levels	Sound Power Level (LWA,m) Active (BW)(1-sided) iR-ADV DX 4945i: 64 dB, Kv 3 dB iR-ADV DX 4935i: 62 dB, Kv 3 dB iR-ADV DX 4925i: 61 dB, Kv 3 dB *Reference value: measured only one unit with ISO7779, described with ISO9296 (2017) Sound Pressure (LpA,m) Bystander's position: Active(BW)(1-sided/2-sided): iR-ADV DX 4945i: 49 dB 51 dB iR-ADV DX 4935i: 49 dB 50 dB iR-ADV DX 4925i: 46 dB 48 dB *Reference value: measured only one unit with ISO7779, described with ISO9296 (2017)
FAX SPECIFICATIONS		Standards	Blue Angel
Maximum Number of Connection Lines	1	CONSUMABLES	
Modem Speed	Super G3: 33.6 kbps G3: 14.4 kbps	Toner Cartridges	C-EXV 66 Toner Black C-EXV 66 Toner BK: 44,500 pages
Compression Method	MH, MR, MMR, JBIG	Toner (Estimated Yield @ 6% Coverage)	
Resolution (dpi)	400 x 400 (Ultra Fine), 200 x 400 (Super Fine), 200 x 200 (Fine), 200 x 100 (Normal)	SOFTWARE AND PRINTER MANAGEMENT	
Sending and Receiving Size	Sending: A3, A4, A4R, A5 ¹ , A5R ¹ , B4, B5 ² , B5R ¹ Receiving: A3, B4, A4, A4R, A5R, B5, B5R ¹ Sent as A4 ² Sent as B4 short	Tracking and Reporting	Universal Login Manager (ULM) uniFLOW Online* *For more information, please refer to: uniFLOW Online
FAX memory	Up to 30,000 pages (2,000 jobs)	Remote Management Tools	iWEMC eMaintenance Content Delivery System
Speed dials	Max. 200	Scanning software	Color Network ScanGear 2
Group dials/destinations	Max. 199 dials	Optimisation tools	Canon Driver Configuration Tool
Sequential broadcast	Max. 256 addresses	Platform	MEAP (Multifunctional Embedded Application Platform)
Memory backup	Yes	Document Publishing	Kofax Power PDF Advanced (Optional)
Fax Features	Sender's Name (TTI), Selecting the Telephone Line (when sending fax), Direct Send, Delayed Send, Preview, Job Done Notice, TX Report, Interrupt Transmission, Sequential Broadcasting, Password/Subaddress Sending, Confidential Mailbox, 2 on 1 Log	PAPER SUPPLY OPTIONS	
STORE SPECIFICATIONS		CASSETTE FEEDING UNIT-AW1	Paper Capacity: 550 sheets x 2 (1,100 sheets) (80 gsm) Paper Type: Thin, Plain, Recycled, Color, Heavy, Bond, Transparency, Pre-punched, Letterhead Paper Size: A3, A4, A4R, A5, A5R, A6R, B4, B5, B5R Custom Size: 105.0 x 148.0 mm to 304.8 x 457.2 mm Paper Weight: 52 to 256 gsm Power Source: From the Main Unit Dimensions (W x D x H): 565 x 635 x 248 mm Weight: Approx. 16.0 kg
Box (Number supported)	100 User Inboxes, 1 Memory RX Inbox, 50 Confidential Fax Inboxes Maximum 30,000 Pages (2,000 jobs) Stored	High Capacity Cassette Feeding Unit-E1	Paper Capacity: 2,450 sheets (80 gsm) Paper Type: Thin, Plain, Recycled, Color, Heavy, Bond, Pre-punched, Letterhead Paper Size: A4 Paper Weight: 52 to 256 gsm Power Source: From the Main Unit Dimensions (W x D x H): 565 x 650 x 248 mm Weight: Approx. 28.0 kg
Advanced Space	Communication Protocol: SMB or WebDAV Supported Client PC: Windows® 10/11 Concurrent Connections (Max.): SMB:64, WebDAV:3		
Advanced Space available disc space	Standard: 16 GB (With option: max. 480GB)		
Advanced Space Features	Authentication for Advanced Space Log-in, Sort Function, Printing a PDF File with a Password, imageWARE Secure Audit Manager Support, Search, File Preview, Authentication Management, Open to public, URI TX, Backup/Restore		
SECURITY SPECIFICATIONS			
Authentication and Access Control	User Authentication (Picture Login, Picture and PIN Login, Card Login*, Username and Password Login, Function Level Login, Mobile Login), Department ID Authentication (Department ID and PIN Login, Function Level Login), uniFLOW Online** (PIN Login, Picture Login, Picture and PIN Login, Card Login, Card and PIN Login, Username and Password Login, Department ID and PIN Login, Function Level Login), Access Management System (Access Control), Cloud Connector* (PIN Login), Microsoft Entra ID (PIN Login, Card Login), Two-Factor Authentication at LUI/RUI *Card readers are optional, please refer to Hardware Accessories **Subscription required		
Document Security	Print Security (Secure Print, Encrypted Secure Print, Forced Hold Printing, uniFLOW Secure Print™), Receive Data Security (Confidential Fax Inbox Forwarding Received Documents Automatically), Scan Security (Encrypted PDF, Device Signature PDF/XPS, User Signature PDF/XPS, Adobe LiveCycle® Rights Management ES2.5 Integration), BOX Security (Mail Box Password Protected, Advanced Space Access Control), Send Data Security (Setting for requesting password input per transmission, Restricted E-mail/File send functions, Confirming FAX number, Allow/Restrict Fax Driver Transmissions, Allow/Restrict Sending from History, S/MIME Support), Document Tracking (Secure Watermark) * Requires uniFLOW Online/uniFLOW		

TECHNICAL SPECIFICATIONS

imageRUNNER ADVANCE DX 4900 Series

OUTPUT OPTIONS*

Inner 2way Tray-M1

*Paper capacity may vary with different paper type/size.

Tray Capacity (with 80 gsm paper)
Upper tray: A4, A5, A5R, A6R, B5, B5R: 85 sheets
SRA3, A3, A4R, B4: 40 sheets
Lower tray (standard tray): A4, A5, A5R, A6R, B5, B5R: up to 220 sheets
SRA3, A3, A4R, B4: up to 100 sheets
Paper Weight: 52 to 300 gsm
Dimensions (W x D x H): 428 x 405 x 88 mm
Weight: 0.7 kg

Copy Tray-T2

Capacity (with 80gsm paper):
A4, A5R, B5, B5R: 100 sheets
A3, A4R, B4: 65 sheets
Dimensions (W x D x H): 442 x 373 x 176 mm (attached to the main unit, when the extension tray is extended)
Weight: 0.5 kg

Inner Finisher-L1

Tray Capacity (with 80gsm paper):
Upper Tray: SRA3, A3, A4, A4R, A5, A5R, A6R, B4, B5, B5R: approx. 45 sheets
Lower Tray: A4, A5, A5R, B5: approx. 500 sheets
SRA3, A3, A4R, B4, B5R: 250 sheets
A6R: 30 sheets
Envelope: 10 sheets
Paper Weight: 52 to 300 gsm
Staple Position: Corner, Double
Staple Capacity:
A4, B5: 50 sheets (52 to 90 gsm)
A4R: 40 sheets (52 to 90 gsm)
A3, B4: 30 sheets (52 to 90 gsm)
Eco Staple:
A3, A4, B4, B5: 10 sheets (52 to 64 gsm)
8 sheets (65 to 81.4 gsm)
6 sheets (82 to 105 gsm)
Staple On Demand: approx. 40 sheets (80 gsm)
Dimensions (W x D x H): 727 x 525 x 225 mm (attached to the main unit, when the extension tray is extended)
Weight: Approx. 9.1 kg

Inner 2/4 Hole Puncher-D1

(Requires Inner Finisher-L1)
Two or Four Holes
Acceptable Punch Paper Weight: 52 to 300 gsm
Acceptable Punch Paper Size: Two Holes A3, A4, A4R, A5, B4, B5, B5R
Four holes A3, A4

Inner 4 Hole Puncher-D1

(Requires Inner Finisher-L1)
Four Holes
Acceptable Punch Paper Weight: 52 to 300 gsm
Acceptable Punch Paper Size:
Four holes A3, A4, A4R, A5, B4, B5, B5R

Staple Finisher-AE1

Tray Capacity (with 80gsm paper):
Upper Tray: A4, A5, A5R, A6R, B5: approx. 250 sheets
SRA3, A3, A4R, B4, B5R: approx. 125 sheets
Lower Tray: A4, A5, A5R, B5: 3,000 sheets
SRA3, A3, A4R, B4, B5R: 1,500 sheets
A6R: 250 sheets
Envelope: Monarch 30 sheets, COM10 No.10, DL, ISO-C5: 100 sheets
Paper Weight:
Upper Tray: 52 to 256 gsm
Lower Tray: 52 to 300 gsm
Staple Position: Corner, Double
Staple Capacity: A4, B5: 50 sheets (52 to 90 gsm)
A4R: 40 sheets (52 to 90 gsm)
A3, B4: 30 sheets (52 to 90 gsm)
Eco Staple:
A3, A4: 10 sheets (52 to 64 gsm)
8 sheets (65 to 81.4 gsm)
6 sheets (82 to 105 gsm)
Staple On Demand: 50 sheets (52 to 90 gsm)
Dimensions (W x D x H): 637 x 623 x 1,021 mm (when the extension tray is extended)
Weight: Approx. 30.0 kg

Booklet Finisher-AE1

(Includes the above Staple Finisher-AE1 basic staple specifications.)
Saddle Stitch paper size: A3, A4R, B4
Saddle Stitch Staple Capacity: 20 sheets x 10 sets (52 to 81.4 gsm) (including 1 cover sheet up to 256 gsm)
Non Staple Folded Bunch Capacity: up to 3 sheets (52 to 105 gsm)
Power supply: From main unit
Dimensions (W x D x H): 637 x 623 x 1,021 mm (when the extension tray is extended)
Weight: Approx. 53.0 kg

2/4 Hole Puncher Unit-A1

(Requires either the Staple Finisher-AE1 or Booklet Finisher-AE1)
Two or Four Holes
Acceptable Punch Paper Weight: 52 to 300 gsm
Acceptable Punch Paper Size:
Two holes A3, A4, A4R, A5, B4, B5, B5R,
Four holes A3, A4

4 Hole Puncher Unit-A1

(Requires either the Staple Finisher-AE1 or Booklet Finisher-AE1)
Four Holes
Acceptable Punch Paper Weight: 52 to 300 gsm
Acceptable Punch Paper Size:
Four holes A3, A4, A4R, A5, B4, B5, B5R

HARDWARE ACCESSORIES

Card Readers

Copy Card Reader-F1
Copy Card Reader Attachment-B7
IC Card Reader Box for Numeric Keypad-A1

OTHERS

Single Pass DADF-C1
DADF-BA1
Platen Cover-Y3
Utility Tray-B1
Numeric Keypad-A2
Instant Stapler-B1 (optional)
Media Adjustment Kit-A1

SECURITY OPTIONS

Data Security

250GB SSD-A1 (used with Memory Mirroring Kit-A1)
1TB SSD-A1
Memory Mirroring Kit-A1

SYSTEM AND CONTROLLER OPTIONS

Print Accessories

PCL International Font Set-A1
PS Printer Kit-BG1
Barcode Printing Kit-D1

System Accessories

Copy Control Interface Kit-A1
Serial Interface Kit-K3
Wireless LAN Board-F1

Fax Accessories

Super G3 FAX Board-BH1
Remote Fax Kit-A1
IP FAX Expansion Kit-B1

OTHER OPTIONS

Accessibility Accessories

ADF Access Handle-A1
Voice Guidance Kit-G1
Voice Operation Kit-D1

Staple Cartridges

Staple Cartridge-Y1 (2 x 2,000pcs)*
*For Booklet Finisher only
Staple-P1 (2 x 5,000pcs)

Device Protection

Antimicrobial Film* - Various Sheets designed to fit the devices most common touch points.
*Application by a Service engineer is recommended

Software & Solutions



Certifications and compatibility



Canon Ireland
3006 Lake Drive
Citywest, Saggart
Co. Dublin, Ireland
Telephone No: 01 2052400
Facsimile No: 01 2052525
canon.ie

Canon (UK) Ltd
The Bower
4 Roundwood Avenue
Stockley Park
Uxbridge
UB11 1AF

Canon Inc.
canon.com
Canon Europe
canon-europe.com
English edition
© Canon Europa N.V., 2024

