



imagePROGRAF PRO series

Print with perpetual
precision and confidence

Canon



© Jan Stria – Canon Ambassador



© Sanjay Jogia – Canon Ambassador

THE VALUE OF PRINT

A photo captures a fleeting moment
 The pulse of a city
 A child's first steps
 The rhythm of the seasons
 A beautiful print helps that moment last forever

It's time to reimagine the photography process,
 and fulfil your vision in a way that grabs your
 audience by the heart

**Life doesn't happen on a screen –
 so bring your art into the world and make it real**

WHY PRINT WITH CANON?

TRANSFORM YOUR VISION INTO A MASTERPIECE...



Canon's mastery of imaging, from input to output, comes from a comprehensive understanding of both capturing and printing images.



From creating precise imaging systems made up of high-quality lenses, cameras and advanced light-hitting sensors, to developing sophisticated print engines and ink technologies, we excel at helping our customers bring their visions to life – with cutting-edge software to support throughout the journey.



Our unique end-to-end imaging solution and its state-of-the-art features offer everyone a proven route to achieve their goals. We're highly regarded among professional photographers, with the Canon EOS range of cameras working seamlessly with the imagePROGRAF printers to craft photographs faithfully into masterpieces without losing a single element, in sizes from 17" to a stunning 60". Discover consistent excellence on prints, from normal to large format, and create immersive experiences and lasting emotional engagement.



Framed / Printed image: © Ulla Lohmann – Canon Ambassador

A SEAMLESS END-TO-END WORKFLOW FROM EOS TO imagePROGRAF



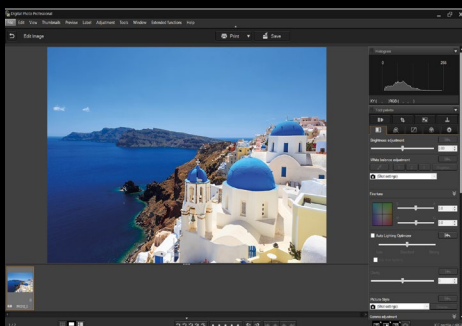
01



EOS CAMERA

Capture the world as you see it with the Canon EOS camera.

02



DIGITAL PHOTO PROFESSIONAL

Easily edit with Canon Digital Photo Professional, a high-performance Mac and Windows application for viewing and processing photos.

An alternative is editing with Adobe Photoshop or Lightroom, popular software among photographers.



03



PROFESSIONAL PRINT & LAYOUT

Prepare your work for print with the Canon Professional Print and Layout software, which seamlessly integrates with photo editing software and the imagePROGRAF PRO series to ensure exceptional quality with the usage of RAW data. With the preview and user-friendly interface, you can get professional results with confidence.

04



PRINT OUT FROM imagePROGRAF

Print with the imagePROGRAF PRO series and display your art with the quality it deserves – that means sharp details, the right tonality, and colour precision.

CRYSTAL FIDELITY TECHNOLOGY – ONLY FROM CANON

We are the only provider of a fully integrated input and output solution for photographers: Crystal Fidelity.

Combining the EOS camera, Digital Photo Professional software, Professional Print and Layout software, and imagePROGRAF PRO series printer means you can easily perform advanced editing and printing of RAW images to make your photography lively and captivating, including adjusting high dynamic range (HDR), as well as white balance, colour, and more.



EOS CAMERA



**DIGITAL PHOTO
PROFESSIONAL**
(HDR PQ MODE)



**PROFESSIONAL
PRINT AND LAYOUT**
(HDR PRINT)



**imagePROGRAF
PRO SERIES**

HDR print OFF (left) and ON (right).

The printout becomes sharper and more 3-dimensional, drawing the viewer in, by maximising the dynamic range in the RAW data.



HDR OFF

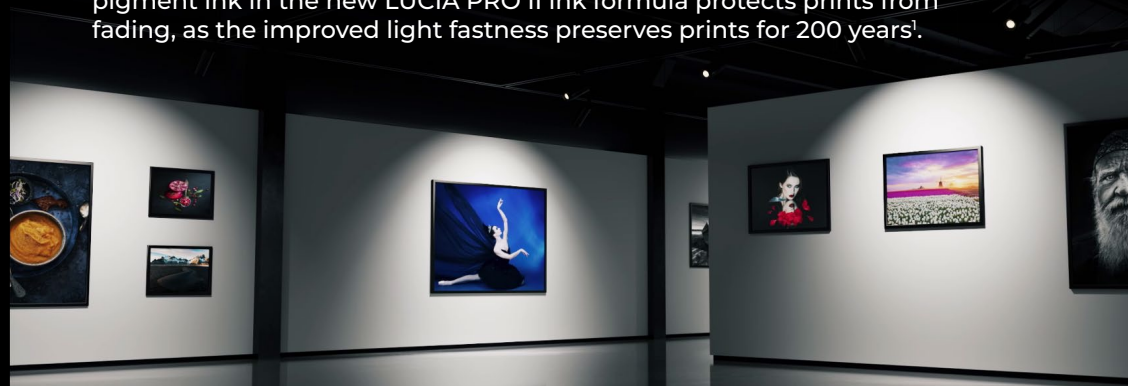


HDR ON

THE imagePROGRAF PRO series

ART THAT LASTS A LIFETIME

Prints reproduced by the imagePROGRAF PRO series are not just exquisite – they will stand the test of time too. The highly light-resistant pigment ink in the new LUCIA PRO II ink formula protects prints from fading, as the improved light fastness preserves prints for 200 years¹.



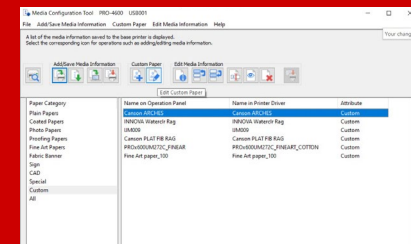
PERFECT PRINTS ON YOUR MEDIA OF CHOICE

Our collaboration with different media suppliers, such as Hahnemühle, Canson, etc., ensures specific .am1x files / ICC profiles of different media with respect to the PRO series can be downloaded from their websites.



© Ulla Lohmann – Canon Ambassador

Using the Media Configuration Tool, all printing parameters – including the ICC profile – will be registered and uploaded to the printer. This allows photographers to print with confidence even with custom media, to achieve the accuracy and optimum quality that photography printing demands.



1 - For the PRO series, when using Canon Photo Paper Pro Platinum, predicted value is calculated in accordance with the indoor light resistance test method and life evaluation criteria of the digital colour photographic print image preservation evaluation method (JEITA CP-3901B) published by JEITA (Japan Electronics and Information Technology Industries Association).



VISION MEETS PRECISION

- ▶ The upgraded imagePROGRAF PRO series takes the existing series' reputation for premium image quality to the next level. The new 12-colour LUCIA PRO II ink set² elevates fine art and photography – MBK ink means deeper blacks, enlarging the dark colour gamut for fine art paper and producing unrivalled image quality.
- ▶ The formula's micro-encapsulated pigments result in a high-density pigment array on the media, offering superior colour reproduction and rich colour expression. Photo inks (PGy, PC, PM) enable exceptional colour gradation.
- ▶ All this allows customers to transcend ordinary printing to enjoy unbeatable image quality, with every nuance of their original vision captured with perfect clarity.

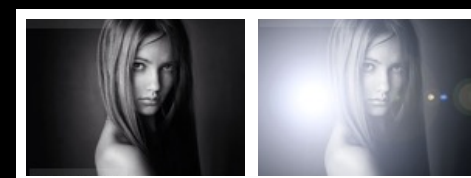
LUCIA PRO II ink



Includes red and blue inks and photo inks, enhancing the photo image quality.

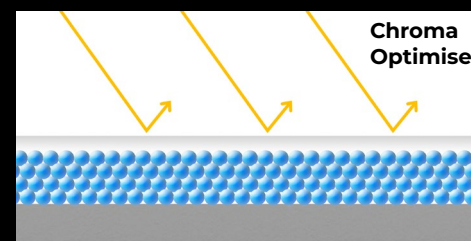


© Alicja Zmyslowska – Canon Ambassador



With CO

Without CO



CHROMA OPTIMISER SUPPRESSES BRONZING EFFECT

Chroma Optimiser (CO) gives the surface a clear coat, which further enhances blacks and produces faithful colours. It also improves uniformity of images, glossiness, and suppresses bronzing.

- ▶ The MBK ink in the new 12-colour LUCIA PRO II ink set² enhances black colours, with deeper blacks and a wider dark colour gamut for fine art paper. Different intensities of blacks and greys can be presented clearly, which shapes the depth and details of dark areas perfectly.

- ▶ The Chroma Optimiser controls the light that determines the colour's appearance, so that the original colours – whether vivid, pastel or black – are reproduced faithfully, every time. No blurring. No bronzing. Just every nuance of the artist's original vision captured with perfect clarity.

² 11 out of 12 inks are newly developed. The matte black ink is used by the imagePROGRAF GP-2000/4000.

imagePROGRAF PRO series SPECIFICATIONS



	imagePROGRAF PRO-1100	imagePROGRAF PRO-2600	imagePROGRAF PRO-4600	imagePROGRAF PRO-6600
COLOURS	12 colours – Matte Black, Photo Black, Cyan, Magenta, Yellow, Photo Cyan, Photo Magenta, Grey, Photo Grey, Red, Blue, Chroma Optimiser			
WIDTH	17" (A2+)	24" (A1+)	44" (A0 or wider)	60"
DIMENSIONS (WXDXH, BASKET OPENED)	723 x 435 x 285 mm	1110 x 984 x 1168 mm	1593 x 984 x 1168 mm	1999 x 984 x 1168 mm
BUNDLE START INK TANK	960ml (80ml for each colour)	1920ml (160ml for each colour)	3960ml (330ml for each colour)	
SALES INK TANK	PFI-4100 (80ml)	MBK: PFI-2100 (160ml) / PFI-2300 (330ml) / PFI-2700 (700ml) Others: PFI-3100 (160ml) / PFI-3300 (330ml) / PFI-3700 (700ml)		
PRINT SPEED (PHOTO PAPER, STANDARD MODE)	A2 (LU-101 colour): Approx. 3 min 40 sec	A1: Approx. 3 min 11 sec	A0: Approx. 5 min 35 sec	
HARD DISK DRIVE (HDD)	N/A	500GB (Encrypted)		
PRINTER LANGUAGE	JPEG, PDF			
BORDERLESS PRINTING	Sheets with particular sizes ⁴	Free size borderless printing		
SUSTAINABILITY RATING	EPEAT Gold ³			
CONSUMABLES / OPTIONAL ITEMS	Print head: PF-10 Maintenance cartridge: MC-20	Print head: PF-10 Maintenance cartridge: MC-30 Cutter blade: CT-07		
ADDITIONAL ROLL HOLDER	No roll	RH2-29	RH2-43	RH2-66
SECOND ROLL UNIT	No roll	RU-23 (2nd roll is optional)	RU-43 (2nd roll is optional)	RU-63 (2nd roll is standard)
PRINTER STAND	No printer stand	Printer stand included in the package		

³ Gold registered in the U.S.

⁴ Sheets with sizes A4, A3, A3+, A2, B4, B3, LTR, LGL, 210x594mm, 8"x10", 10"x12", 13"x19", 14"x17", 17"x22", 17"x25"