



**Canon**

# imagePROGRAF PRO series

Where your vision becomes  
our timeless precision

**FOR PHOTOGRAPHERS AND ARTISTS**



ImagePROGRAF  
PRO-2600 (24")



ImagePROGRAF  
PRO-4600 (44")



ImagePROGRAF  
PRO-6600 (60")



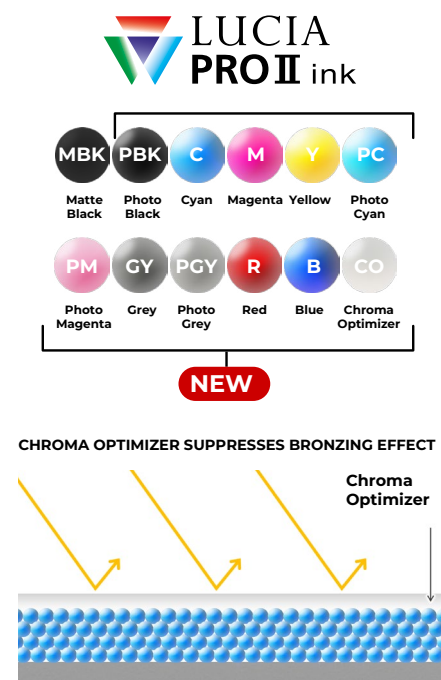
For photography and fine arts applications, quality matters. Whether it's an individual photographer or artist, a professional studio or a photography school, images need to rise to the occasion by reproducing precise and faithful colours. The longevity of prints is increasingly important as well.

With its new 12-colour LUCIA PRO II ink set<sup>1</sup>, the imagePROGRAF PRO series can meet all these demands – and much more.

## CHALLENGES IN THE PHOTOGRAPHY AND FINE ARTS MARKET

- Prints need to display unbeatable image quality with faithful colour reproduction and perfect colour gradation to convey the original vision of the artist. For fine art media, black density should be enhanced.
- Future-proof artwork should be robust enough to look good for years to come, while providing ease and confidence in the framing and post-print processes.
- Print with confidence with easy operation and a streamlined workflow, with no need for special training for users. A reliable printing workflow reduces misprints and wastage of time and media.
- There's a need to handle a variety of media quickly – registering custom media and changing media takes time.
- Businesses are looking to be more sustainable.

## BENEFITS OF THE imagePROGRAF PRO series



### Unbeatable image quality

The new LUCIA PRO II ink set<sup>1</sup> offers deeper blacks enhanced by MBK ink, an enlarged dark colour gamut for fine art paper, and unrivalled image quality.

Micro-encapsulated pigments result in a high-density pigment array on media, leading to superior colour reproduction and rich colour expression, while photo inks (PGy, PC, PM) enable exceptional colour gradation.

Finally, the Chroma Optimizer controls light reflection to faithfully reproduce colours and capture artists' original visions with perfect clarity, enabling very dense black on photo paper.

WITHOUT  
CHROMA  
OPTIMISER

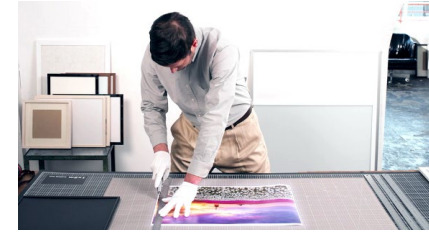


WITH  
CHROMA  
OPTIMISER



### Light fastness

Prints produced by the imagePROGRAF PRO series are not just exquisite. They'll stand the test of time, too. The light-resistant pigment ink in the new LUCIA PRO II ink<sup>1</sup> formula protects prints from fading – the improved light fastness preserves prints for 200 years<sup>2</sup>.



### Scratch resistance

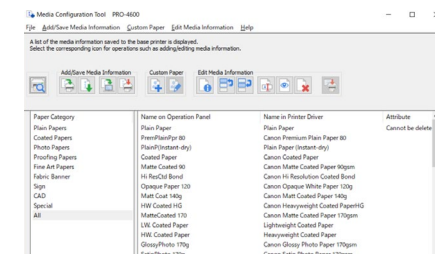
Scratch resistance has also been greatly improved with the new LUCIA PRO II ink set<sup>1</sup>. Prints are more robust and resistant to scratches when compared to the previous imagePROGRAF PRO series and the competition – particularly when using semi-glossy or glossy media. This minimises paper waste and makes the post-print process easier.

### Software support: Professional Print and Layout & RIP providers

Print easily and reliably with the imagePROGRAF PRO series. The print preview window from Canon's software Professional Print and Layout shows the final image to avoid misprints, while the slot and nesting functions help arrange images.

Soft proofing shows how colours will look on different media, which can be adjusted using a tone curve and sliders.

Choose a wide selection of compatible RIP solutions for designing, proofing and printing to keep using existing software from RIP vendors with the imagePROGRAF PRO series.



### Simpler media handling

Media handling is better than ever. The settings for the media exchange process have been simplified to reduce media loading time by up to 40%.

Registering new custom media with the Media Configuration tool has also been made easier – the imagePROGRAF PRO series has been designed with those that regularly use custom media in mind.

### Automatic media loading

Automatic media loading makes even complex jobs easy to navigate with the imagePROGRAF PRO series. Users just need to place the roll in the feeder, and the printer will take care of the rest, from media loading and media type detection to calculating the remaining media.



### Improved sustainability

The imagePROGRAF PRO series is EPEAT Gold<sup>3</sup> rated, featuring lower power consumption in both operating and power off mode. More recyclable materials are used in the packaging, with a significant reduction of expanded polystyrene foam (EPS)<sup>4</sup>.

<sup>1</sup>11 of the 12 colours of pigment ink in the PRO-6600/4600/2600 are newly developed. MBK ink is the same as the one used in GP-4000/20000.

<sup>2</sup>When using Photo Paper Pro Platinum. Predicted value calculated in accordance with the indoor light resistance test method and life evaluation criteria of the digital colour photo print image preservation evaluation method published by JEITA, Japan Electronics and Information Technology Industries Association (JEITA CP-3901B).

<sup>3</sup>EPEAT Gold registered in the U.S.

<sup>4</sup>The imagePROGRAF PRO-2600 is free from polystyrene foam. The rest of the models have 89.5% reduction of polystyrene usage in packaging, if the second roll is excluded.



# PRODUCT SPECIFICATION



**ImagePROGRAF  
PRO-2600 (24")**

**ImagePROGRAF  
PRO-4600 (44")**

**ImagePROGRAF  
PRO-6600 (60")**

The imagePROGRAF PRO series marks a new era in professional large format photography and fine art printing.

Featuring sizes from 24-inch to 60-inch, all using the new LUCIA PRO II ink set<sup>1</sup>, these three models produce robust works of art with unbeatable image quality, perfectly suited to the photography and fine art market.

The series showcases improved sustainability and is designed with a user-friendly experience at the core.

Let's explore how the imagePROGRAF PRO series can take care of your business with unbeatable print quality and improved longevity.

COLOUR	12 colours – Matte Black, Photo Black, Cyan, Magenta, Yellow, Photo Cyan, Photo Magenta, Grey, Photo Grey, Red, Blue, Chroma Optimiser		
WIDTH	24"	44"	60"
DIMENSIONS WxDxH (BASKET OPENED)	1110 x 984 x 1168 mm	1593 x 984 x 1168 mm	1999 x 984 x 1168 mm
BUNDLE STARTER INK TANK	1920ml (160ml for each colour)	3960ml (330ml for each colour)	
SALES INK TANK	MBK: PFI-2100 (160ml) / PFI-2300 (330ml) / PFI-2700 (700ml) Others: PFI-3100 (160ml) / PFI-3300 (330ml) / PFI-3700 (700ml)		
PRINT SPEED (PHOTO PAPER, STANDARD MODE)	3min 11sec (A1 size)	5min 35sec (A0 size)	
HARD DISK DRIVE (HDD)	500GB (Encrypted)		
PRINTER LANGUAGE	JPEG, PDF		
BORDERLESS PRINTING	Free Size Borderless Printing		
SUSTAINABILITY RATING	EPEAT Gold <sup>3</sup>		
CONSUMABLES / OPTIONAL ITEMS	Print Head: PF-10 Maintenance cartridge: MC-30 Cutter Blade: CT-07		
ADDITIONAL ROLL HOLDER	RH2-29	RH2-43	RH2-66
2ND ROLL UNIT	RU-23 (2nd roll is optional)	RU-43 (2nd roll is optional)	RU-63 (2nd roll is standard)
PRINT STAND	The printer stand is included in the package		

## CONTACT:

**Canon Inc.**  
canon.com

**Canon Europe**  
canon-europe.com

**English Edition**  
© Canon Europa N.V. 2024

**Canon Europe Limited**  
4 Roundwood Avenue  
Stockley Park  
Uxbridge  
UB11 1AF

