




# MAJOR BENEFITS

of the imagePROGRAF GP-2000  
and the imagePROGRAF GP-4000

**Canon**



The new imagePROGRAF GP-4000 and GP-2000 large-format printers from Canon break new ground in terms of colour and operability. Their extensive colour gamut can produce posters and other graphics in attention-grabbing fluorescents, on-trend pastels and accurate corporate shades. Bundled software and enhanced operational functions also make these printers easy to use in a range of environments.

# RED, ORANGE, GREEN, VIOLET AND FLUORESCENT PINK INKS

The world's first aqueous pigment large-format printers with 10 colours plus Fluorescent Pink ink,<sup>1</sup> the imagePROGRAF GP-4000 and GP-2000 achieve the widest colour gamut for the imagePROGRAF Series. Users can explore Red, Orange, Green and Violet inks on top of Fluorescent Pink and a standard gamut, to create large-format marketing material that adds value and supports new business opportunities.

'Radiant Infusion' technology layers Fluorescent Pink ink with other inks on the paper surface during printing, to achieve reproduction of both vivid colours and soft pastel shades. Fluorescent pink ink can also be used to print specific areas such as text and images in pink and orange, producing a bold colour expression that makes those areas stand out.

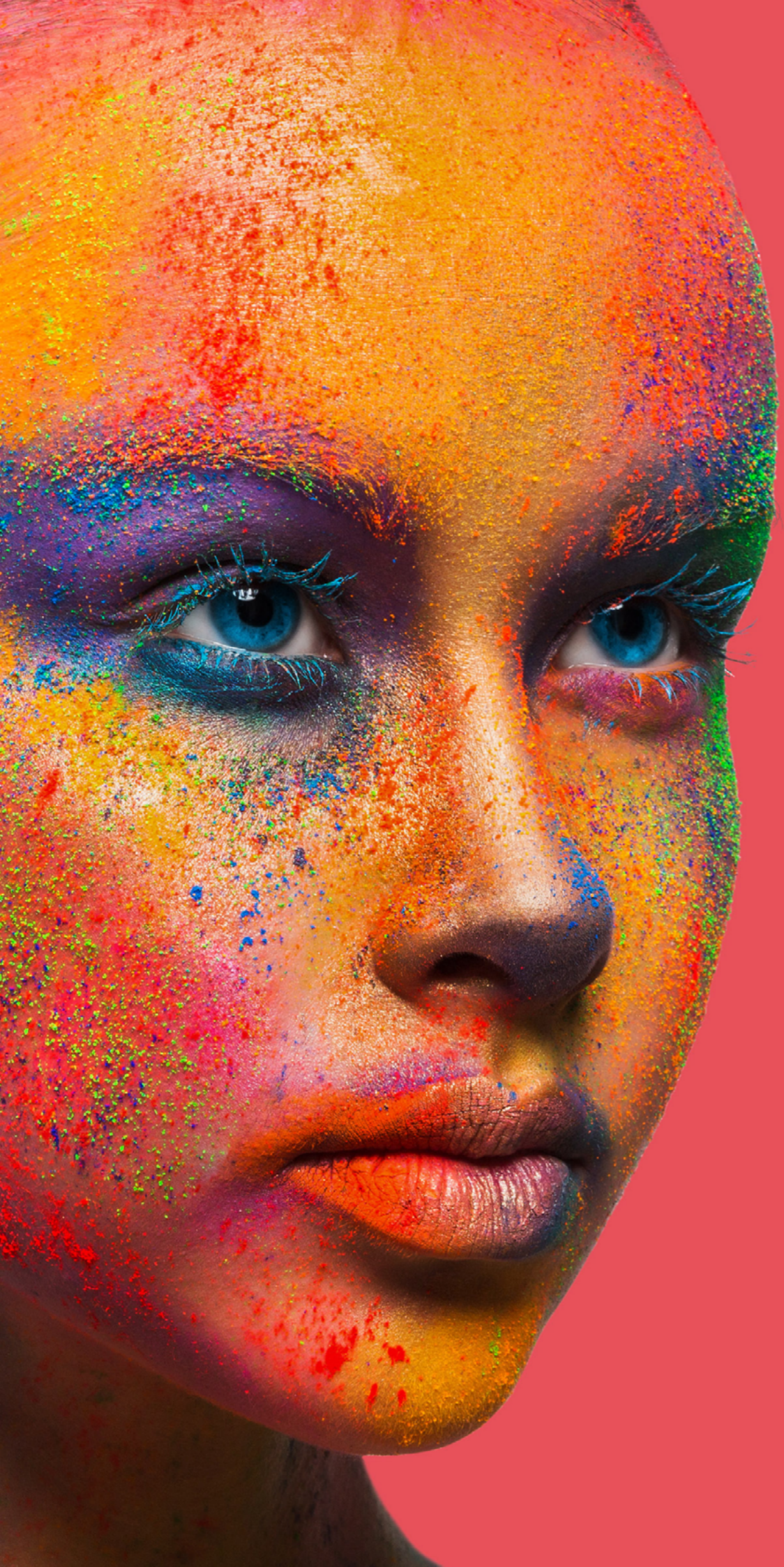
Users can choose to print with or without fluorescent ink, simplifying the production of applications that demand faithful colour reproduction. These may include corporate colours, colour proofs with a wide colour range, and graphics that include fluorescent colours which are difficult to reproduce with a conventional inkjet printer.

## "PANTONE®-CALIBRATED" LICENCE

The imagePROGRAF GP-4000 and GP-2000 have achieved a "PANTONE-calibrated" licence for "PANTONE PASTELS & NEONS GUIDE Coated", which includes fluorescent and pastel colours - the first in the world.<sup>2</sup> The inks have also achieved 99% coverage for "PANTONE FORMULA GUIDE Solid Coated" used in a wide range of applications such as printing and design.<sup>3</sup>

Obtaining licences with two official PANTONE guides expands the choice of colour specifications at the time of design and ensures they are printed faithfully.





# PosterArtist Lite Software

## FOR EASY POSTER CREATION

Each printer comes bundled with **PosterArtist Lite**, PC software packed with templates and images to make it easy to create high-grade posters and other graphics. New templates have been added to make full use of the Fluorescent Pink ink.

A new function gives users access to free image libraries from stock service providers Pixabay, Unsplash and Pexels. Users can select their favourite photos from a choice of millions and combine them to easily create a high-quality design for their posters and marketing materials.

PosterArtist Lite supports the printers' two special modes. Vivid mode utilises 'Radiant Infusion' technology to achieve more vibrant printing with an expanded colour gamut, while Spot mode allows users to print fluorescent ink in specific areas.

## SMART PRINTER FUNCTIONS

### FOR EFFICIENT WORKFLOWS

The imagePROGRAF GP-4000 and GP-2000 are engineered with a number of enhanced printer features and automated functions that reduce manual processes and the overall workload for users.

A **'Smart Roll Paper Set'** function automatically performs paper supply and feeding processes, detects the paper type and width, estimates the remaining amount of paper, and makes adjustments to ensure accurate printing - all after the user simply places the roll paper in the feed section of the printer. Because there is no need to manually insert the media into the feed slot, users do not need to touch the media surface. This prevents it from being marked with fingerprints or dirt.

The **Multifunction Roll System** combines two functions: a dual roll feeding and rewinding printouts on roll (media take-up unit). The dual roll feed enables high-volume continuous printing by using either two rolls of the same media type or two different sizes and types of roll paper and switching during printing. Alternatively, the lower unit can be used as a take-up unit for output from the upper unit. This increases workflow efficiency and productivity.

---

# SUPPORT FROM LEADING RIP BRANDS

RIPs from leading providers support printing from imagePROGRAF GP-4000 and GP-2000. This allows users to choose their preferred RIP for designing, proofing and large-format printing without changing their familiar output workflow. RIP vendors include Caldera, Ergosoft, CGS, DEVStudio, DINAX, Shiraz, EFI, Eisfeld, ONYX and Sai.

**Thanks to these key features, Canon imagePROGRAF GP-4000 and GP-2000 large-format printers are an outstanding added-value choice for a wide range of organisations and industries.**





## NOTES

<sup>1</sup> Among major manufacturers of aqueous pigment large-format inkjet printers excluding sublimation transfer system, as of June 1, 2021. Canon research.

<sup>2</sup> "PANTONE PASTELS & NEONS GUIDE Coated" colour gamut coverage rate is 97% for GP-4000/2000 when using Photo Paper Pro Platinum with imagePROGRAF printer driver at [Poster/Photo (Fluorescent)] [Highest] (600dpi), and 85% for GP-300/200 when using Premium Semi-Glossy Paper 2 with imagePROGRAF printer driver at [Poster/Photo (Fluorescent)] [Highest] (600dpi).

<sup>3</sup> "PANTONE FORMULA GUIDE Solid Coated" colour gamut coverage rate of GP-300/200 is 94% when using Premium Semi-Glossy Paper 2 with imagePROGRAF printer driver at [Poster/Photo (Fluorescent)] [Highest] (600dpi).

**Canon**

**Canon Inc.**  
Canon.com

**Canon Europe**  
canon-europe.com

**English Edition**  
© Canon Europa N.V., 2021

**Canon Europe Ltd**  
3 The Square,  
Stockley Park,  
Uxbridge,  
Middlesex  
UB11 1ET  
UK