

A person wearing a bright yellow jacket, dark pants, and a backpack is walking along a snow-covered mountain ridge. The background shows a vast, snowy landscape under a clear blue sky. The overall image has a blue tint.

GO FURTHER

DIGITAL COLOUR PRINTING
SCALES NEW HEIGHTS

imagePRESS C10010VP Series

Canon

A MILESTONE FOR DIGITAL PRODUCTION PRINTING



**On every journey
milestones mark
your progress.**

**They show you how
far you've come and
what lies ahead.**

A new imagePRESS is a milestone for digital colour print. In 2006, the first imagePRESS invited the industry to see digital differently. To explore new possibilities. Discover new opportunities.

As a new era dawns for digital print, the new imagePRESS C10010VP Series invites you to go even further. To take on new challenges and achieve new successes.

More jobs. Shorter runs. Jobs that push media flexibility to the limit. Jobs wanted yesterday. And all with no compromise on quality. Whatever your business — print-for-pay commercial PSP or high-volume, in-house print operation — you face these challenges every day.

The new imagePRESS C10010VP Series harnesses the latest Canon technology to turn challenges into opportunities, opportunities into profits, ideas into reality. Exceptional productivity. Extraordinary media flexibility. Amazing quality.

Experience the ultimate in streamlined, automated digital production — all in one powerful package. And backed by the reliability you expect from an imagePRESS — day in, day out, job after job.

Print stunning, offset-quality images, which jump off the page, on stocks as light as 60gsm, as heavy as 400gsm and as long as 1,300mm.

In volumes from a few to thousands. From menus to mailers, books to banners. Press "Start" and move on to the next job, confident of consistent high quality and uninterrupted operation from the first sheet to the last.

Choose from a wide range of automated digital front ends, workflow tools and finishing options to build the print-to-finish configuration that's best for your business — now and in the future.

Save manual inspection time while maintaining consistent print quality thanks to two new automation options.

Ensure high-level colour consistency and registration accuracy with the Sensing Unit. Detect even the tiniest flaws through the Inspection Unit.

The new imagePRESS C10010VP Series — taking your business even further.

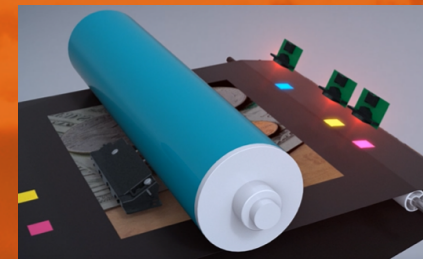
GO FASTER

Push-button automation. Uninterrupted printing.
Keep the pace high, even if the going gets tough on mixed-media jobs. Whatever the job, get from start to finish as fast as possible.

You're handling more jobs. In shorter print runs. To ever tighter deadlines. So productivity matters. The new imagePRESS C10010VP Series takes streamlined production to a whole new level. Speed — a consistent 100 pages per minute, whatever the media — is only the beginning. Press "Start" and you activate a host of sophisticated automation tools that have just one objective — no-compromise, high-quality colour as efficiently and consistently as possible.

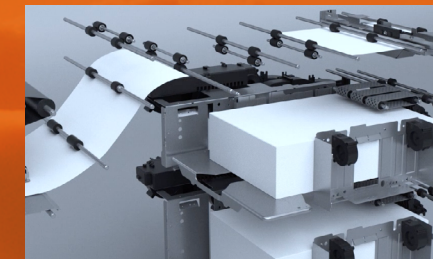
PUSH-BUTTON CALIBRATION

Leave colour pre-adjustment to the imagePRESS C10010VP Series' built-in spectrometric sensor. Just press the button to check the engine's colour settings for whatever paper stock you want to use, including coated paper. Trust Multi-D.A.T. real-time calibration to check every single page on-the-fly — something that you'll find nowhere else — and ensure colour consistency.



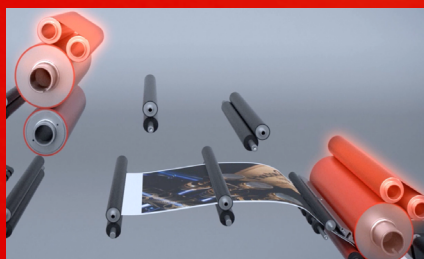
AVOID THE JAMS

For uninterrupted production, Ultrasonic Multi-Sheet Detection prevents paper jams and minimises finishing issues. Jam-prone sheets are automatically diverted to a top-mounted escape tray on the optional POD Deck. The press keeps running and manual intervention is unnecessary.



STABLE AT SPEED

Mixing different media doesn't mean slowing down. Dual Fixing technology matches the paper path to the media, eliminating time-consuming fixing temperature adjustments for different paper types and thicknesses. Heavier/coated media (over 151gsm) passes through two fusers; lighter/uncoated media (less than 150gsm) through a single fuser. An air knife separates thin sheets, minimising scratching.



GO THE DISTANCE

Long sheet auto-duplex means an end to the manual feeding of long sheets. The POD Deck Lite XL and optional BDT VX Feeder units deliver high-volume feeding of sheets as long as 762mm and heavy as 400gsm, with a maximum capacity of 5,000 sheets — plus excellent front-to-back registration. Achieve effortless production of letter-fold products — six-panel brochures, posters, book covers, and much more.



KEEP ON RUNNING

Vacuum-feeding with air-separation technology ensures ultra-reliable, high-volume feeding of up to 4,000 sheets. Misfeeding of even coated paper is minimised. Connect two decks and you can handle 10,000 sheets.



ACCEPT NO LIMITS

**Go where your imagination takes you.
Print mixed-media jobs that push the boundaries of
what's possible with paper. Print longer. And heavier.
Resist the elements.**

Print is back in fashion as brands learn that digital alone isn't effective.

The online space is too noisy and overcrowded. And when everyone's talking at once, it's hard to make yourself heard. And as hard for your customers to hear.

Add digital print to the mix, and it's another story. It's a multi-sensory channel. One we can not only see, but touch and feel. Well-designed print demands attention. It delivers emotion, impact, engagement — and a better ROI.

The new imagePRESS C10010VP Series' unrivalled ability to print mixed media opens a world of variety to you and your customers.



THINK BIGGER

With long sheet support up to 1,300mm, you can think bigger. Print banners and POP in a single pass or 4-6pp A4 gatefolds.



GAIN WEIGHT

Designers love to use heavier papers. They can convey ideas of luxury and strength. Make recipients feel valued. Think business cards, direct mail, invitations, greetings cards. High-end marketing collateral. The imagePRESS C10010VP Series' support for stocks up to 400gsm is perfect for printing all these higher-margin products, and much more.



TOUGHEN UP

Open up opportunities in outdoor print by adding durability, thanks to expanded support for synthetic media — polypropylene and polyester, for example.



PRINT THE ROUGH WITH THE SMOOTH

For enhanced 'look and feel' nothing beats the 'peaks and valleys' of textured and embossed papers. But not every digital press can do them justice. The imagePRESS C10010VP Series' Advanced Image Transfer Belt (AITB) features multiple flexible layers that ensure total toner penetration of even the most textured media — similar to the blanket on an offset press. The operator can also optimise the transfer voltage for each media type. You won't find both a flexible belt and operator-level voltage control anywhere else.



LET THE PAPER SPEAK

The exceptional translucence of CV Toner — the CV stands for Consistently Vivid — lets the surface properties of the paper really show through. Matt and coated stocks match the output. It also improves transfer efficiency, enhancing colour consistency and accuracy.



ALL THIS, AND PRODUCTIVITY TOO

Don't let productivity concerns stop you exploring the power of media variety. Give your creativity full expression by using contrasting media to add impact. The design of the Dual Fixing Unit in the imagePRESS C10010VP Series — two passes for heavy stocks, one pass for lighter media — eliminates the need for temperature adjustments.



QUALITY THAT WILL AMAZE

Exploration is full of surprises.

Take digital colour print into new territory with outstanding, consistent quality that's more than a match for offset.

Take your business to new places, confident you can deliver the highest-quality digital images. Vibrant colour. High-definition images. Razor-sharp text. Fine lines. Full solids. Whatever the media. Whatever the application. With minimal operator involvement. Time and time again.



DOUBLE UP

Multi-exposure technology images every dot twice, ensuring high-quality images and superb quality throughout the print run. The twin-sleeve developer technology uses multiple grooved rollers to apply toner for consistent, full solids right across the sheet. Print stronger solids — free from mottling — with the twin-sleeve developer design.



AUTOMATED QUALITY ASSURANCE

Two additional automation options help ensure professional quality for every single sheet, while saving time on manual inspection and job setting adjustment. The Sensing Unit adjusts settings for front-to-back registration and colour tone before print and monitors them during print, automatically adjusting in real time to ensure every page stays consistent with the job settings. The Inspection Unit checks for imperfections such as streaks, dirt and distortion, with a range of adjustable sensitivity levels and automated remedial responses to eliminate printed media with any imperfections.



LASER-SHARP RESOLUTION

Compared with conventional infrared lasers, the R-VCSEL's¹ 32 beams generate a smaller spot size and provide a stunning 2,400 x 2,400dpi print resolution. Text and thin lines are faithfully reproduced. And there's no compromise on imaging speed.



START-TO-FINISH COLOUR CONSISTENCY

Multi-D.A.T. real-time calibration ensures consistent, stable colour throughout continuous printing — with no operator intervention and zero impact on productivity. It measures every single image by scanning 20 density patches placed on the surface of the drum and the Advanced Image Transfer Belt — five for each colour, from low to high density. No other digital press measures highlights, midtones, shadows and solids.



MULTI-SCREEN FLEXIBILITY

The 2,400 x 2,400dpi resolution delivers a range of screen patterns from 140dpi up to 230dpi, as well as 170lpi and 200lpi, so you can cover all possibilities. Default to 190dpi for images and graphics, and 230dpi for text. Skin tones are smooth, with no grain — the 200 line screen improves resolution when rosettes (YMK) in human skin images are noticeable. Text is sharp and easy-to-read. Image segmentation technology automatically identifies the different elements — or you can express the artist inside you and go your own way.



BEST-IN-CLASS REGISTRATION

You won't find better registration on any competitive machine. The cross-feed registration unit delivers +/-0.5mm accuracy, using a steel side registration bar — similar to a sheet-fed offset press. For even greater consistency, four-corner line-up ensures all corners align — a feature that's only found on imagePRESS. For added precision, registration marks on the Advanced Image Transfer Belt compensate for image movement on a flexible surface.

¹Red Vertical Cavity Surface Emitting Laser

BUILD YOUR OWN

One size rarely fits all — and certainly not in today’s digital printing market. Which is why the new imagePRESS C10010VP Series comes in a range of configurations, from standard to fully-featured — and everything in between. Plus a multitude of finishing options and workflow solutions.

STANDARD CONFIGURATION³

The ideal combination for environments printing mostly booklet applications. Unrivalled media flexibility lets you print different weights and textures without compromising on productivity. Add a High Capacity Stacker if you want to finish high-volume jobs offline.



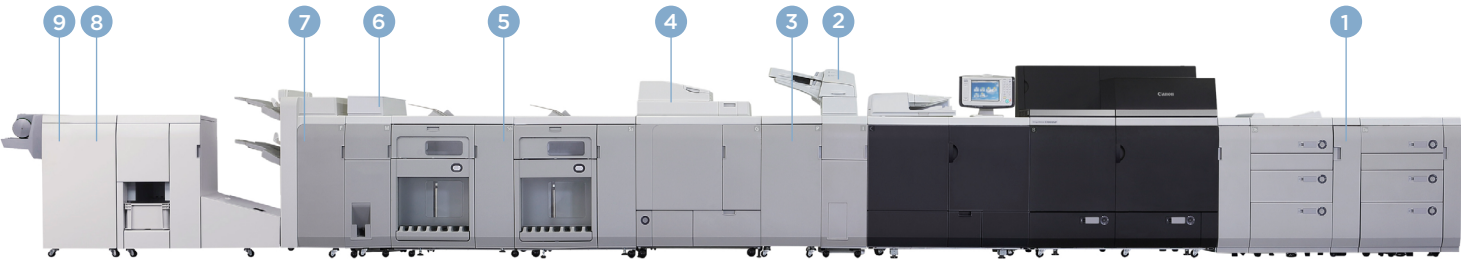
Paper Input	Paper Output
Max. paper capacity: 6,000 sheets	Max. paper capacity: 5,000 sheets
Configuration	
INPUT	OUTPUT
1 POD Deck	2 Saddle Finisher (for multi-position stapling and booklet making)

‘Applications are the drivers of the demand for print and govern which devices will be needed by print service providers (PSPs) over the coming years.’

Keypoint Intelligence²

FULL CONFIGURATION

Stand out from the competition with maximum creativity, productivity and quality. No cut-sheet toner machine delivers more.



Paper Input	Paper Output
Max. paper capacity: 10,000 sheets	Max. paper capacity: 15,400 sheets
Configuration	
INPUT	OUTPUT
1 2 x POD Deck	2 Document Insertion Unit
	3 Multi-Function Professional Puncher
	4 Perfect Binder
	5 2 x High Capacity Stacker (HCS)
	6 Paper Folding Unit
	7 Saddle Finisher (for multi-position stapling and booklet making)
	8 Booklet Trimmer
	9 Two-Knife Booklet Trimmer

² ‘Western European Digital Production, Printing Application Forecast: 2018-2023.’ Keypoint Intelligence, January 2020.
³ Unless otherwise stated, any reference to media refers to 80gsm A4 paper.

Accessories and specifications in this document are based on information available at the time of publishing and are subject to change without notice.

LONG-SHEET CONFIGURATION (STANDARD)

If you predominantly use long-sheet media, experience imagePRESS quality on stocks up to 1,300mm simplex and 762mm duplex.



Paper Input	Paper Output
Max. paper capacity: 5,000 sheets Long sheet (up to 762mm): 1,000 sheets 1 sheet (input 762mm – 1,300mm)	Max. paper capacity: 3,500 sheets Long sheet (up to 762mm): 300 sheets 10 sheets (output 762.1mm – 1300mm)
Configuration	
INPUT	OUTPUT
1 POD Deck Lite XL	3 Saddle Finisher (for multi-position stapling and booklet making)
2 Long Sheet Tray	4 Finisher Long Sheet Catch Tray

LONG-SHEET CONFIGURATION (ADVANCED)

Designed for high-production, high-volume environments handling a high proportion of long-sheet media. The BDT VX Feeder delivers precise registration and versatile media handling of media up to 762mm duplex.



Paper Input	Paper Output
Max. paper capacity: 11,000 sheets Long sheet (up to 762mm): 5,000 sheets	Max. paper capacity: 11,200 ¹ sheets Long sheet (up to 762mm): 400 sheets
Configuration	
INPUT	OUTPUT
1 BDT VX long sheet feeder	3 High Capacity Stacker
2 POD Deck	4 HC Stacker Long Sheet Tray
	5 Saddle Finisher (for multi-position stapling and booklet making)
	6 Finisher Long Sheet Catch Tray

¹(6,200 HCS+ 1,000 Fin. Tray A (Upper Tray) + 4,000 Fin. Tray B

A CHOICE OF FEEDING OPTIONS

POD DECK

- Capacity: up to 4,000 sheets (1,000 sheets x 2 drawers plus 2,000 sheets x1 drawer). Escape Tray: 150 sheets

- A second POD can be added in the configuration

- Supported media sizes⁴:
 - SRA3S, A3S, A4L, A4S, B4S, B5L, B5S, 13"x19"S, 12"x18"S, 11"x17"S, LGLS, LTRL, LTRS, EXECL, 8KS, 16KL, 16KS, Four Postcard, Free size (182mm x 182mm - 330.2mm x 487.7mm)



- Supported media type and weight:
 - Media type: Thin, Plain, Recycled, Colour, Thick, Coated, Embossed, Bellum, Bond, OHP, Clear Film, Translucent, Label, Punched, Index (Index attachment is needed), Four Postcard, Synthetic
 - Media weight: 60-400gsm

POD DECK LITE

- Capacity: up to 3,500 sheets
- Supported media sizes:
 - SRA3S, A3S, A4L, A4S, A5S, B4S, B5L, B5S, 13"x19"S, 12"x18"S, 11"x17"S, LGLS, LTRL, LTRS, EXECL, STMS, 8KS, 16KL, 16KS Free size (139.7mm x 182mm - 330.2mm x 487.7mm)



- Supported media type and weight:
 - Media type: Thin paper, Plain paper, Recycled paper, Colour paper, Thick paper, Coated paper, Embossed, Bellum, Bond, OHP, Transparency, Translucent, Label, Pre-punched paper, Index, Postcard (Double postcard, Four postcard)
 - Media weight: 60-400gsm (Coated media: 70 - 350gsm)
- Air separation technology and friction feeding.
- This unit can be combined with Long Sheet Tray option (see opposite).

POD DECK LITE XL

- Capacity: up to 3,500 sheets up to 487.7mm long and 1,000 sheets up to 762mm long.
- Custom-sized paper: 139.7mm x 182mm - 330.2mm x 487.7mm
- Long sheets: 279mm x 487.8mm - 330.2mm x 762mm
- Media weight:
 - 60-400gsm (up to 487.7mm long)
 - 64-300gsm uncoated (from 487.7mm to 762.0mm long)
 - 100-300gsm coated (from 487.7mm to 762.0mm long)
- Air separation and friction feeding



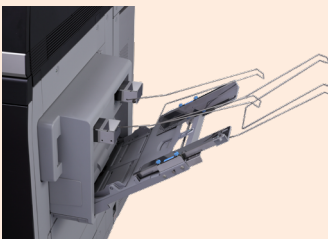
BDT VX 370 LONG SHEET FEEDER

- Capacity up to 5,000 sheets for media up to 762mm
- Custom-sized paper: 279mm x 432mm - 330.2mm x 762mm
- Media weight: Up to 400gsm
- Full air assistance method (Tornado)



LONG SHEET TRAY

- Supports one sheet at a time up to 1,300mm long



FINISHING OPTIONS OPEN UP EVEN MORE POSSIBILITIES

STAPLE FINISHER



The Staple Finisher and Saddle Finisher have paper capacities of up to 5,000 sheets and a stapling capacity of 100 sheets. The functionalities are:

- **Collating capabilities** — automatically collate and output each copy of a complete job, with pages in the correct order
- **Grouping capabilities** — collate and output each copy of a complete job, arranged by page
- **Offset-stacking capabilities** — output each copy of a complete, collated job
- **Stapling capabilities** — continuously print a copy of a complete job first, automatically staple the copy, then output.

SADDLE FINISHER



As above, plus booklet-making up to 25 sheets and saddle-folding up to 5 sheets. Booklet mode provides saddle-stitch capabilities for up to 100 pages,

including cover. Saves cost by producing booklets that complement offset-printed jobs, thus addressing needs of the POD market. Coupled with the Document Insertion Unit, a colour cover page can be inserted.

HIGH CAPACITY STACKER (HCS)



Allows high-volume production. Stacking capacity of 6,000 sheets, with 200-sheet additional capacity on top tray. Up to 100 sheets of long-sheet media up

to 762mm can also be stacked on top tray. Two HCS units can be added to provide even more capacity. Two built-in removable dollies enable documents to be easily relocated for offline finishing.

PERFECT BINDER



Creates high-quality, perfect-bound books. Low-temperature hot glue technology binds the body pages and cover. Booklet size – Width: 203-297mm; Length: 138-216mm.

Thickness: Up to 25mm. Number of sheets: 10-200 (80gsm). Option to add precise three-edge trimming to create professional finish.

BOOKLET TRIMMER



Creates common edge on booklets generated by Saddle Finisher. This avoids the shingling effect, whereby edges of pages furthest from the saddle's innermost fold seem to move away from the edges of pages closest to the innermost fold. To counteract this, the trimmer trims the edges of the finished book to a common edge. Trim width: 2-20mm. Trim thickness: Up to 50 sheets (including cover). Paper weights: 60-300gsm.

TWO-KNIFE BOOKLET TRIMMER



Integrates seamlessly with the Booklet Trimmer and the Saddle Finisher to enable inline three-sided trimming of full-bleed,

saddle-stitched booklets. Trim width: 2-15mm. Trim thickness: Up to 50 sheets, including cover. Paper weights: 60-300gsm.

DOCUMENT INSERTION UNIT



Enables pre-printed media from different sources to be added to jobs for that extra professional touch. Paper weight: 60-300gsm. Sizes: A3, A4, A4R, SRA3, 13" x 19". Free size: 182mm x 182mm up to 330.2mm x 487.7mm.

MULTI-FUNCTION PROFESSIONAL PUNCHER



For advanced punching, including twin-loop and pro-click. Punching patterns available as die sets — can easily be changed by user. Paper weights (plain): 75-300gsm.

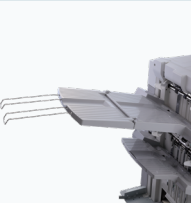
Optional Punch Tools: Loose Leaf 2/4-Hole Punch (8.0mm), Loose Leaf 2/4-Hole Punch (6.5mm), Plastic Comb 21-Hole, Twin Loop 23/21-Hole (Round), Twin Loop 34/32-Hole (Round), Twin Loop 23-Hole (Square), Twin Loop 34-Hole (Square), Colour Coil 47-Hole, Velo Bind 12-Hole, Loose Leaf 4-Hole (Swedish), Crease (No hole).

PAPER FOLDING UNIT



Enables the folding of sheets in the following formats: Z-Fold, C-Fold, Accordion Z-Fold, Double Parallel Fold and Half Fold.

FINISHER LONG SHEET CATCH TRAY



New extended tray handles longer sheets — up to 1,300mm. Attaches to top tray of Finisher and Saddle Finisher and folds up for easy access to finishing equipment.

⁴Under Supported media sizes, "S" refers to short-edge feed and "L" refers to long-edge feed.

STREAMLINE PRODUCTION

Simplify complexity with a choice of powerful workflow solutions to increase production efficiencies, cost-effectiveness and revenues.

PRISMAsync for imagePRESS C10010VP Series

Canon's unique workflow software suite provides a high-quality, user-friendly interface with a high range of capabilities, enabling you to:



- Minimise manual touchpoints to reduce costs, errors and manpower
- Gain total control over the entire production operation
- Centralise order and job management

- Streamline order intake and pre-flighting
- Minimise file preparation time
- Auto-correct colour management
- Gang similar jobs with intelligent batching
- Unify disparate processes

EFI FIERY

Two Fiery controllers are available: imagePRESS Server B7000 V2.0 and imagePRESS Server B6000 V2.0.



- Professional colour management
- Pre-press proofs and last-minute edits
- Pre-flight and troubleshoot jobs
- Built-in variable data software for personalisation
- Faster file processing
- Accurate, consistent colour management
- Automate workflows to do more in less time
- HyperRIP feature with single, multiple and 'rush' RIP modes for high performance and productivity
- Centralised job management and editing capabilities support complex job requirements for cost-efficiencies

WE'VE GOT

YOUR BACK



You can't travel alone. You need a back-up team.

Choose Canon as your trusted technology partner and we'll support you at every stage of the journey — now and in the future.



WORLD-LEADING IMAGING EXPERTISE

For over 80 years the Canon name has been synonymous with imaging excellence in fields as diverse as photography and medical imaging. With the launch of the imagePRESS range in 2006, we transformed the world of end-to-end digital print technology, so you can trust us — and our specialist workflow partners — to deliver innovations that meet your business needs.



A SUPPORTING CAST OF THOUSANDS

You have access to the latest innovations in digital print technology, as well as media and applications. There are thousands of service experts dedicated to keeping you productive, backed by a global database of fixes, updates and experiences.



HELPING YOUR BUSINESS GROW

We know your business is more than just hardware and software. You have a vision of where you want to go and how high you want to climb. Which is why we provide ongoing business consultancy and support to help you get the most from your investment, and fuel your business growth.




Canon Inc.
Canon.com

Canon Europe
canon-europe.com

English Edition
© Canon Europa N.V. 2020

 /Canon

 /Canon

 /CanonEurope