



Canon

RESPONSIBLE SCANNING

WITH THE CANON imageFORMULA range

SUSTAINABILITY, FROM FACTORY TO PRODUCT END-OF-LIFE

At Canon, our commitment to sustainability shows in our journey to make our entire business more sustainable. Rooted in our corporate philosophy of kyosei – living and working together for the common good – we focus on improving resource efficiency and minimising waste, thus actively reducing our environmental impact.

Digitising documents lowers paper and ink use to promote a more efficient and sustainable workflow.

Our imageFORMULA scanners are designed to propel you closer to your goals by helping you use resources intelligently and reduce energy consumption.

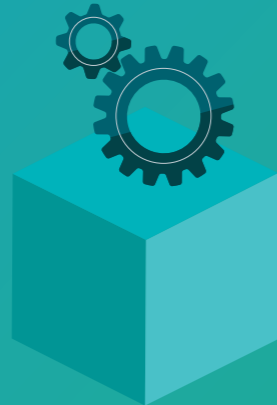
OUR THREE SUSTAINABILITY PILLARS:



CARBON REDUCTION

We save energy through streamlined manufacturing processes that deliver energy efficient products.

Canon aims to consistently achieve the environmental targets of an average annual 3% improvement, in the index of lifecycle CO₂ emissions per product unit set in 2008, and realise a cumulative total 50% improvement by 2030.



RESOURCE EFFICIENCY

We conserve resources from product development through to end of life.

Since 2008, we have taken 44,343 tons of plastics from used products for recycling as raw materials, and another 35,216 tons of products and parts were reused directly.



RESPONSIBLE BUSINESS

We always treat our employees, partners, and customers with respect.

For 2023, Canon has been awarded an A score for climate change by CDP, the third time we have been included on their highest-ranking A list, placing us in the top 2% of companies assessed in this category.

The CDP is an international environmental non-profit organisation which evaluates major companies and organisations worldwide on their efforts to tackle environmental issues.

INSIDE OUR NEW PRODUCTION FACILITY

In 2022, we opened a state-of-the-art factory in Japan, which produces our imageFORMULA scanners.

To help reach net zero carbon emissions across the factory by 2050, we will:

1. Increase use of onsite solar energy
2. Reduce energy consumption
3. Increase the use of renewable energy

This entails a CO₂ emissions reduction of 265 tonnes per year

2012 BASELINE	2030	2050
CO ₂	-46%	Zero
Electricity use	-11%	-20%
Renewable energy	+35%	+80%

Source: CEI (Canon Electronic Inc.)



RENEWABLE ENERGY

Our factory has helped to reduce its carbon emissions by using 500kW of onsite solar power combined with energy-efficient insulation and ventilation.



QUALITY

Our stringent processes ensure no dust reaches delicate components, supporting a 99.99% 'no defect' rate and helping to reduce waste.



COST

An optimised and productive flow line keeps logistical efficiency high, and energy use low.



SUPPLY CHAIN

By using storage space effectively and reducing product lead times, the facility increases the efficiency of operations and saves energy.

CARBON REDUCTION



REMOTE WORKING

Our range of network scanners, portable scanners and desktop scanners helps your teams digitise their workflows and process information from anywhere. Our software solutions allow employees to manage devices remotely enabling reduced trips into the office. By reducing physical storage and transportation requirements, we support lowering the carbon footprint of your processes.



ENERGY CONSUMPTION

Many of the imageFORMULA scanners have best-in-class energy efficiency, with less power required for operation and features such as duplex scanning and auto-sleep modes to drive energy use even lower. That's why many devices are EPEAT Gold or Silver* and Energy Star certified.

*EPEAT Gold registered in the U.S.



LOGISTICS AND RELATED SERVICES

Reduced product sizes and weights ensures we can place more boxes in the same space during transport, while user friendly maintenance and remote management tools reduces the need for onsite service visits. Both these measures contribute to lowering CO₂ emissions.

RESOURCE EFFICIENCY



PACKING MATERIALS

All Canon document scanners changed from using styrofoam and plastic packaging to using cardboard and biodegradable plastics, improving recyclability and reducing waste.



PRODUCT MATERIALS

We are increasing the use of recycled materials in our imageFORMULA scanners, supporting the circular economy. Meanwhile, our ongoing drive to boost the durability of products and components such as rollers ensures customers can increase usage lifespan and reduce waste.



OPTIMISED IMAGES

With advanced image processing tools and file compression, Canon scanners help reduce image file sizes, improving the speed of information transfer but also reducing the need for storage server devices, helping to cut energy use and increase efficiency.



CONSUMABLES

Digitising documents using imageFORMULA scanners allows teams to collaborate and share information online, thus reducing the need for reprints which saves paper and toner.

RESPONSIBLE BUSINESS



ENVIRONMENT COMPLIANCE

The imageFORMULA range complies with several recognised regulations globally, helping your customers improve their own environmental awareness and sustainability ratings. Canon, with environmental, social and governance (ESG) certification from global inspection and certification company SGS (Société Générale de Surveillance), demonstrates Canon's commitment to the environment, social and governance responsibilities.



INCLUSIVITY

Canon has various model styles to suit different environments and user preferences. Several models provide an ergonomic design that supports seated operation and ensures people with reduced mobility can use it comfortably. Products also have low noise emission levels, contributing to improved user and workplace environment conditions.



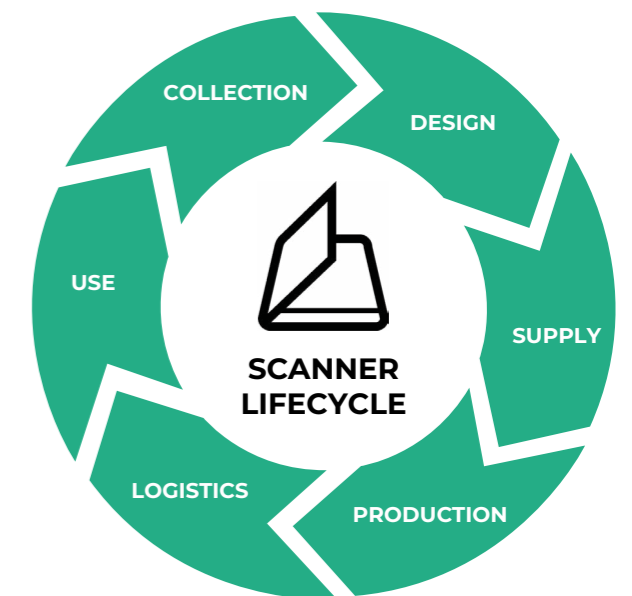


LIVING AND WORKING FOR THE COMMON GOOD

A society where all people can live and work together, respecting one another and coexisting happily, transcending the difference in culture, custom, language, ethnicity, or/and region.

And a society where future generations can enjoy the rich environment of the Earth in harmony with nature. Canon proactively works toward realising a sustainable society.

- Our scanners are designed to facilitate user disassembly, allowing them to separate parts based on materials and enabling easy and efficient waste sorting.
- We promote material reuse by helping customers recycle scanned paper, contributing to a more sustainable product lifecycle.
- Strive to be more sustainable by implementing measures such as reducing power consumption, incorporating scanning auto-shift functions to support the transition to sleep mode.
- Plastic free product packaging, helping to reduce the environmental impact.
- Reduce the amount of material being used in scanner manufacturing.
- Meet the requirements and gain certification for several environmental standards.
- Operate based on the environmental management system complied with ISO14001.
- First ESG certificate holder in Japan.



OUR CERTIFICATIONS

We've worked hard to meet the rigorous standards set out by international bodies such as ISO. Here are some of our key certificates:

ISO 9001 – Quality Management Systems

ISO 14001 – Environmental Management Systems

ISO 45001 – Occupational Health and Safety Management Systems

ISO 13485 – Medical Devices Quality Management Systems

SGS Environmental, Social and Governance





CONTACT

Canon Electronics Inc.
www.canon-elec.co.jp

Canon Europe
canon-europe.com

English Edition
© Canon Europa N.V. 2024

Canon Europe Ltd
4 Roundwood Avenue
Stockley Park
Uxbridge
UB11 1AF

Canon