

# RELIABLE AND SECURE A4 BLACK AND WHITE MULTIFUNCTION DEVICE SUPPORTING HIGH BUSINESS PRODUCTIVITY.

Designed to support small to medium size offices and workgroups with secure and fast document processing solutions.

## imageFORCE 1643 Series



### HIGH PRODUCTIVITY

Fast start-up and document processing speeds and flexible device configuration with expandable paper capacity options to support high business productivity.

### ROBUST SECURITY

Protect your business with the latest security features, including Trellix Embedded Control and machine learning-AI recommended security settings that help safeguard device, network and all your sensitive data.

### SUPPORTING SUSTAINABILITY

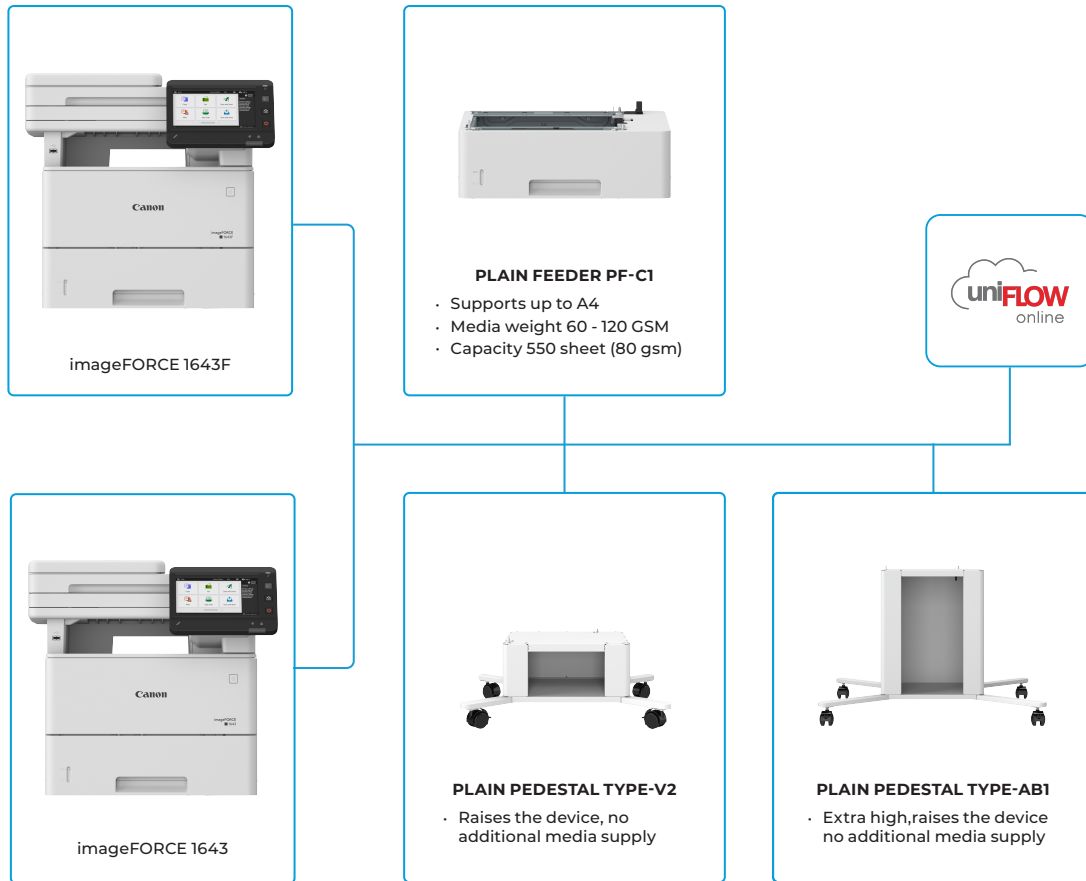
Boost your sustainability efforts with devices that are built with up to 25% recycled materials and feature technologies like low temperature melting toner to lower the energy consumption.

### GREAT USER EXPERIENCE

Large, intuitive UI display with plenty of personalisation options and practical functions to help you easily execute all your print and scan jobs.

# imageFORCE 1643 Series

## MAIN CONFIGURATION OPTIONS



This flat configuration is for illustration purpose only. For a complete list of options and the exact compatibility relationships, please refer to the [online product configurator](#).

# TECHNICAL SPECIFICATIONS

# imageFORCE 1643 Series

MAIN UNIT	
Machine type	A4 Monochrome Laser Multifunctional
Core functions	1643F: Print, Copy, Scan, Send and Fax 1643: Print, Copy, Scan, Send
Processor	1.6GHz Dual Core Processor and 800MHz Single Core Processor
Control Panel	7" LCD Colour Touch Screen
Memory	2.0GB RAM
Storage	64GB eMMC
Interface Connection	NETWORK Standard: 1000Base-T/100Base-TX/10Base-T, Wireless LAN (IEEE 802.11b/g/n), Wi-Fi Direct Connection OTHERS Standard: USB 2.0 (Host) x 2, USB 2.0 (Device) x 1
Paper Supply Capacity (A4, 80gsm)	Standard: 650 sheets Maximum: 2,300 sheets (with Paper Feeder PF-C1x3)
Paper Output Capacity (A4, 80gsm)	Standard/Maximum: 150 sheets
Supported Media Types	Multi-purpose tray: Thin, Plain, Recycled, Color, Heavy, Bond, Label, Letterhead, Envelope  Paper Cassette: Thin, Plain, Recycled, Color, Heavy, Bond, Letterhead
Supported Media Sizes	Multi-purpose tray: Standard size: A4, A5, A5R, A6, B5 Custom size: 76.2 x 127.0 mm to 216.0 x 355.6 mm Envelopes: COM10, Monarch, DL, ISO-C5 Envelope custom size: 76.2 x 127.0 mm to 216.0 x 355.6 mm  Paper Cassette: Standard size: A4, A5, A5R, A6, B5 Custom size: 105.0 x 148.0 mm to 216.0 x 355.6 mm
Supported media weights	Multi-purpose tray: 60 to 200 gsm  Paper Cassette: 60 to 120 gsm  Duplex: 60 to 120 gsm
Warm-up Time	14 Seconds or less  From Sleep Mode: 4 Seconds or less
Dimensions (W x D x H)	480 mm x 518 mm x 458 mm
Installation Space (W x D)	680 mm x 980 mm
Weight	Approx. 24.5 kg (including regular toner)
PRINT SPECIFICATIONS	
Print Speed	1-sided: Up to 43 ppm (A4), Up to 65.2 (A5-landscape) 2-sided: Up to 36 ipm (A4)
Print Resolution (dpi)	Up to 1,200 x 1,200
Page description languages	Standard: UFR II, PCL6, PCL5*, Adobe® PostScript®3™  *Commands supported only. Third party driver or direct printing from application required
Direct Print	Supported file types: PDF, TIFF/JPEG, XPS (From USB Memory)
Printing from mobile and cloud	AirPrint, Mopria, IPP Everywhere, Canon PRINT, uniFLOW Online, Universal Print by Microsoft
OS Standard Printing	Android/Windows® 10/Windows® 11/Chrome OS/macOS (11.2.2 or later) /iOS (15.2 or later) /iPadOS
Fonts	PS fonts: 136 Roman PCL fonts: 93 Roman, 10 Bitmap fonts, 2 OCR fonts, Andalé Mono WT J/K/S/T** (Japanese, Korean, Simplified and Traditional Chinese) , Barcode fonts*2  * Requires optional PCL INTERNATIONAL FONT SET-A1 ** Require optional BARCODE PRT KIT-D1
Print Features	Secure Print, Secure Watermark, Header/Footer, Page Layout, Two-sided Printing, Mixed Paper Sizes/ Orientations, Toner Reduction, Poster Printing, Forced hold printing, Print Date, Scheduled Printing, Printing Using a Virtual Printer
Operating System	UFR II: Windows® 10/11/Server2016/Server2019/Server2022/Server2025, macOS (10.15 or later) PCL: Windows® 10/11/Server2016/Server2019/Server2022/Server2025 PS: Windows® 10/11/Server2016/Server2019/Server2022/Server2025, macOS (10.15 or later) PPD: Windows® 10/11, macOS (10.15 or later)  As of Dec. 2025
COPY SPECIFICATIONS	
Copy Speed	1-sided: Up to 43 ppm (A4) 2-sided: Up to 36 ipm (A4)

First-Copy-Out Time (A4, BW)	Platen: Approx. 6.3 seconds or less ADF: Approx. 6.4 seconds or less
Copy Resolution (dpi)	600 x 600
Multiple Copies	Up to 9,999 copies
Copy Density	Automatic or Manual (9 Levels)
Magnification	Variable zoom: 25% to 400% (1% Increments)
Copy Features	Preset R/E Ratios by Area, Two-Sided, Density Adjustment, Original Type Selection, Interrupt Mode, Two-sided Original, Sort, Job Build, N on 1, Sharpness, Erase Frame, Copy ID Card, Reserved copy, Copy Sample
SCAN SPECIFICATIONS	
Type	Single-pass Duplexing Automatic Document Feeder* [2-sided to 2-sided (Automatic)]
Document Feeder Paper Capacity (80 gsm)	up to 50 Sheets
Document Feeder acceptable paper weight	Document Feeder media weight: 50 to 105 gsm
Supported media sizes	Platen scanning size: up to 216 x 355.6 mm  Document Feeder media size: A4, A5R, A6, B5 Custom size: 48.0 x 85.0 mm to 216.0 x 355.6 mm
Scan Speed (ipm: A4)	Send (300 x 300 dpi): 1-sided Scanning: 50 (BW), 50 (CL) 2-sided Scanning: 100 (BW), 100 (CL)  Copy: Scan Speed Priority (300x600dpi: default) 1-sided Scanning: 50 2-sided Scanning: 100
Scan Resolution (dpi)	600 X 600
Pull Scan Specifications	Color Network ScanGear2. For both TWAIN and WIA  Supported OS: Windows® 10/11/Server 2016/Server 2019/Server 2022/Server 2025  As of Dec. 2025
Scan Method	Push Scan, Pull Scan, Scan to Network, Scan to USB Memory Key, Scan to Mobile, Scan to cloud (uniFLOW Online)
SEND SPECIFICATIONS	
Destination	Standard: E-mail/Internet FAX (SMTP*), SMB, FTP, WebDAV, Mail Box Optional: Super G3 FAX, IP Fax * Available OAuth 2.0 authentication method on Microsoft 365 and Google Workspace
Address Book	LDAP (2000)/Local (1600)/Speed dial (200)
Communication protocol	File: FTP (TCP/IP), SMB3.1.1 (TCP/IP), WebDAV E-mail/Fax: SMTP, POP3
File Format	Standard: TIFF, JPEG*, PDF (Compact, Searchable, PDF/A-1b, Encrypted) XPS (Compact, Searchable), PDF/XPS (Device SignatureD, Office Open XML (PowerPoint, Word) Optional: PDF (Trace&Smooth), PDF/XPS (User Signature)  *Single page only
Universal Send Features	Original Type Selection, Two-sided Original, Book to Two Pages, Different-size Originals, Density Adjustment, Sharpness, Erase Frame, Job Build, Delayed Send, Preview, Job Done Notice, File Name, Subject/Message, Reply-to, E-mail Priority, TX Report, Original Content Orientation
FAX SPECIFICATIONS	
Maximum Number Of Connection Lines	1
Modem Speed	Super G3: 33.6 kbps G3: 14.4 kbps
Compression Method	MH, MR, MMR, JBIG
Resolution (dpi)	400x400 (Ultra Fine), 200x400 (Super Fine), 200x200 (Fine), 200x100 (Normal)
Sending/Receiving Size	Sending: A4, A5R*, A6*, B5* Receiving: A4, A5, A5R, B5  * Sent as A4
Fax memory	Up to 30,000 pages
Speed Dials	Max. 200
Group dials/destinations	Max. 199 dials
Sequential broadcast	Max. 256 addresses

# TECHNICAL SPECIFICATIONS

# imageFORCE 1643 Series

<b>Memory backup</b>	Yes
<b>Fax Features</b>	Sender's Name (TTI), Direct Send, Delayed Send, Preview, Finished Stamp, Job Done Notice, TX Report, Interrupt Transmission, Sequential Broadcasting, Password/Subaddress Sending, Confidential Mailbox
<b>SECURITY SPECIFICATIONS</b>	
<b>Authentication And Access Control</b>	User Authentication (Picture Login, Picture and PIN Login, Username and Password Login, Function Level Login, Mobile Login), Department ID Authentication (Department ID and PIN Login, Function Level Login), uniFLOW Online/uniFLOW* (PIN Login, Picture Login, Picture and PIN Login, Card Login, Card and PIN Login, Username and Password Login, Department ID and PIN Login, Function Level Login), Access Management System (Access Control)  *optional
<b>Document Security</b>	Print Security (Secure Print, Encrypted SecurePrint, Forced Hold Printing, uniFLOW Secure Print**), Receive Data Security (Confidential Fax Inbox Forwarding Received Documents Automatically), Scan Security (Encrypted PDF, Device Signature PDF/XPS, User Signature PDF/XPS**), Send Data Security (Setting for requesting password input per transmission, Restricted E-mail/File send functions, Confirming FAX number, Allow/Restrict Fax Driver Transmissions, Allow/Restrict Sending from History, S/MIME Support)  *1 Requires optional uniFLOW Online / uniFLOW **2 Requires optional Universal Send Digital User Signature Kit-C1
<b>Network Security</b>	Protecting eMMC Data (FIPS 140-2), TLS1.3, IPsec, IEEE802.1X authentication (LAN/WLAN), SNMPv3, Firewall Functionality(IP/MAC Address Filtering), WPA3 support, Dual Network Support (Wired LAN/Wireless LAN, Wired LAN/Wired LAN), Disabling Unused Functions (Enabling/Disabling Protocols/Applications, Enabling/Disabling Remote UI, Enabling/Disabling USB Interface), Communication Line Separation (G3 FAX, USB Port, Scan and Send -Virus Concerns for E-mail Reception)
<b>Device Security</b>	Standard Storage Initialize, Job Log Conceal Function, Protecting MFP Software Integrity, Checking MFD Software Integrity & Platform Firmware Resiliency (NIST SP800-193) with Automatic System Recovery (Verify System at Start-up, Runtime Intrusion Detection enabled with Trelix Embedded Control)
<b>Device Management And Auditing</b>	Administrator Password, Digital Certificate and Key Management, Audit Log, Cooperating with External Security Audit System (Security Information and Event Management), Security Policy Setting
<b>ENVIRONMENTAL SPECIFICATIONS</b>	
<b>Operating Environment</b>	Temperature: 10 to 30 °C Humidity: 20 to 80 % RH (Relative Humidity/No condensation)
<b>Power source</b>	220-240V(±10%) 50/60Hz (±2Hz)
<b>Power consumption</b>	Maximum: Approx. 1400 W Active printing: Approx. 522 W Standby: Approx. 12.2 W Sleep mode: Approx. 0.8 W Typical Electricity Consumption (TEC)*: 0.38 kWh/week (230V) For detailed information relating to Lot26 regulation, please go to: <a href="http://www.canon-europe.com/For_Work/Lot26/index.aspx">http://www.canon-europe.com/For_Work/Lot26/index.aspx</a>  * As per USA Energy Star 3.2
<b>Noise Levels</b>	Sound Pressure: Active: 53dB Standby: 25db Sound Power: Active: Duplex 67dB / Simplex 68dB Standby: 40dB

<b>Standards</b>	Blue Angel (Validation Pending)
<b>CONSUMABLES</b>	
<b>Toner Cartridges</b>	TONER T06 (20,500 pages) Estimated @5% coverage
<b>SOFTWARE AND PRINTER MANAGEMENT</b>	
<b>Tracking and reporting</b>	uniFLOW Online
<b>Remote management tools</b>	iW Enterprise Management Console Monitoring Service
<b>Scanning software</b>	Color Network ScanGear2. For both TWAIN and WIA
<b>Optimisation tools</b>	Canon Driver Configuration Tool
<b>PAPER SUPPLY OPTIONS</b>	
<b>Paper Feeder PF-C1</b>	Paper Capacity: 550 sheets (80 gsm) Paper Type: Thin, Plain, Recycled, Color, Heavy, Bond, Letterhead Paper Size: A4, A5, A5R, A6, B5 Custom size: 105.0 x 148.0 mm to 216.0 x 355.6 mm Paper Weight: 60 to 120 gsm
<b>HARDWARE ACCESSORIES</b>	
<b>Others</b>	MiCard Attachment Kit-B1  Plain Pedestal Type-V2  Plain Pedestal Type-AB1
<b>SYSTEM AND CONTROLLER OPTIONS</b>	
<b>Print Accessories</b>	Barcode Printing Kit-D1  PCL International Font Set-A1
<b>System Accessories</b>	Universal Send Trace & Smooth PDF Kit-A1 Universal Send Digital User Signature Kit-C1

Trelix



## Certifications and compatibility



**Canon**

Canon Inc.  
Canon.com

Canon Europe  
canon-europe.com

English Edition  
© Canon Europa N.V. 2026