

# imageRUNNER ADVANCE DX 6780i

## IMPROVE BUSINESS EFFICIENCY WITH MONO A3 MULTIFUNCTION DEVICES THAT STREAMLINE WORKFLOWS WITH AUTOMATION AND CLOUD CONNECTIVITY

### MAIN CONFIGURATION OPTIONS



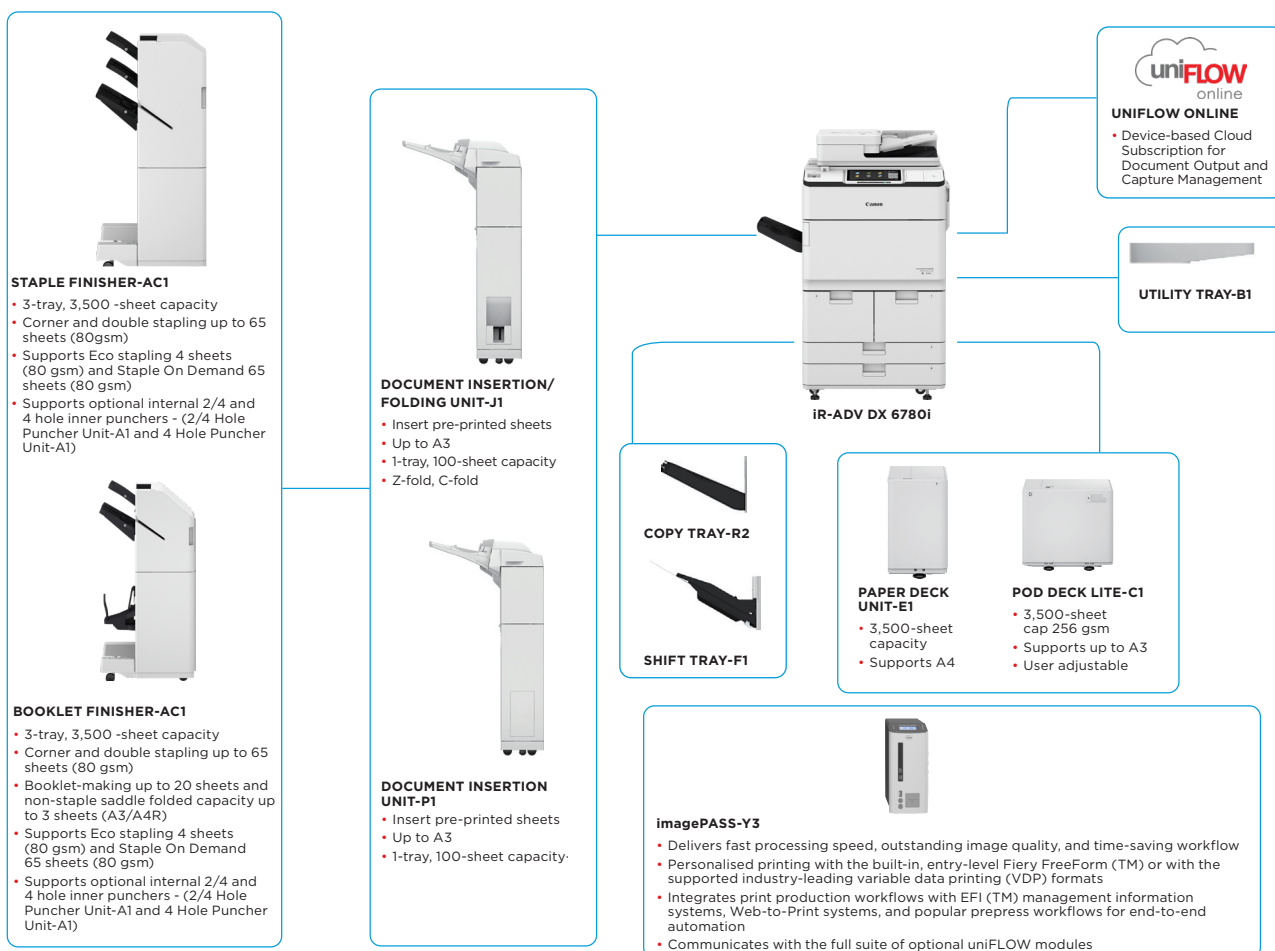
Canon uniFLOW Online  
Outstanding Cloud Output Management Solution



Canon uniFLOW Online  
Outstanding Cloud Output Management Solution



New to the Line



This flat configuration is for illustration purpose only. For a complete list of options and the exact compatibility relationships, please refer to the online [product configurator](#).

The Unified Firmware Platform (UFP) ensures that the latest feature upgrades and protection are available, for an enhanced user experience across the entire iR ADVANCE DX portfolio.

**Canon**

# TECHNICAL SPECIFICATIONS

# imageRUNNER ADVANCE DX 6780i

## MAIN UNIT

<b>Machine type</b>	A3 Monochrome Laser Multifunctional
<b>Core functions</b>	Print, Copy*, Scan*, Send*, Store and Optional Fax*
<b>Processor</b>	1.75GHz Dual Core Processor
<b>Control Panel</b>	Standard: 10.1" TFT LCD WSVGA Colour Touch panel Optional: 10.4" TFT LCD SVGA Colour Upright Touch panel for MFP Model
<b>Memory</b>	Standard: 3.0GB RAM
<b>Hard Disk drive</b>	Standard*: 320GB (available disk space: 250GB), Optional: 250GB, 1TB *A different initial HDD may be used.
<b>Mirroring Hard Disk Drive</b>	Optional
<b>Interface Connection</b>	Network Standard: 1000Base-T/100Base-TX/10Base-T, Wireless LAN (IEEE 802.11 b/g/n) Optional: NFC, Bluetooth Low Energy Others Standard: USB 2.0 (Host) x1, USB 3.0 (Host) x1, USB 2.0 (Device) x1; Optional: Serial Interface, Copy Control Interface
<b>Paper Supply Capacity (A4, 80gsm)</b>	Standard: 4,200 sheets 100-sheet Multi-purpose tray x1 550-sheet cassette x 2 1,500-sheet Paper Deck x 2 Maximum: 7,700 sheets (with Paper Deck Unit-EI or POD Deck Lite-C1)
<b>Paper output capacity (A4, 80gsm)</b>	250 Sheets (with Copy Tray-R2) Maximum: 3,500 Sheets (with Staple Finisher-AC1 or Booklet Finisher-AC1)
<b>Finishing capabilities</b>	With options: Collate, Group, Offset, Staple, Saddle Stitch, Hole Punch, Eco Staple, Staple On Demand, Document Insertion, Z-fold, C-fold
<b>Supported media types</b>	Multi-purpose tray: Thin, Plain, Recycled, Color, Heavy, Bond, Transparency, Label, Pre-punched, Letterhead, Tab, Tracing  Paper Decks (Right/Left): Thin, Plain, Recycled, Color, Heavy, Bond, Pre-punched, Letterhead  Paper Cassettes (Upper/Lower): Thin, Plain, Recycled, Color, Heavy, Bond, Pre-punched, Letterhead, Tab* *Tab Feeding Attachment-B1 is required.
<b>Supported media sizes</b>	Multi-purpose tray: Standard size: A3, A4, A4R, A5 <sup>1</sup> , A5R, A6R <sup>2</sup> , B4, B5, B5R Custom size: 100.0 x 148.0 mm to 297.0 x 487.7 mm Free size: 100.0 x 148.0 mm to 297.0 x 487.7 mm <sup>1</sup> Supported media weights: more than 64 gsm <sup>2</sup> Supported media weights: more than 91 gsm
<b>Supported media weights</b>	Paper Decks (Right/Left): Standard size: A4, B5  Paper Cassettes (Upper/ Lower): Standard size: A3, A4, A4R, A5R, B4, B5, B5R Custom size: 139.7 x 182.0 mm to 297.0 x 487.7 mm
<b>Warm-up Time</b>	Multi-purpose tray: 52 to 256 gsm Paper Deck(Right/Left): 52 to 220 gsm Paper Cassette(Upper/Lower): 52 to 220 gsm Duplex: 52 to 220 gsm  Quick Start-up Mode: 4 Seconds or less* *Time from device power on to when the copy icon appears and is enabled to operate on the touch panel display  From Sleep Mode: 30 Seconds or Less  From Power On: 30 seconds or less* *Time from device power-on, until copy ready(not print reservation)
<b>Dimensions (W x D x H)</b>	iR-ADV DX 6780i 670 x 770 x 1,185 mm *With optional Upright Control Panel: 1,170 x 770 x 1,252 mm
<b>Installation Space(W x D)</b>	Basic: 1,533 x 1,353 mm (with Multi-purpose tray/ upper-right cover open + Front cover open + Copy Tray) Fully configured: 2,436 x 1,353 mm (with POD Deck Lite-C1 + Document Insertion/Folding Unit-J1 + Booklet Finisher-AC1/Staple Finisher-AC1 + Main unit Front cover open)
<b>Weight</b>	iR-ADV DX 6780i Approx. 219 kg <sup>1</sup> , Approx. 223 kg <sup>2</sup> <sup>1</sup> Including ADF, Flat Touch Panel and the toner bottle. <sup>2</sup> Including ADF, optional Upright touch panel and the toner bottle.
<b>PRINT SPECIFICATIONS</b>	Including the toner bottle.
<b>Print Speed</b>	iR-ADV DX 6780i: Up to 80 ppm (A4), up to 40 ppm (A3), up to 58 ppm (A4R), up to 35ppm (A5R)
<b>Print Resolution (dpi)</b>	1,200 x 1,200
<b>Page description languages</b>	Standard: UFRIL, PCL6, Optional: Adobe®PostScript®3™
<b>Direct Print</b>	Supported file types: PDF, EPS, TIFF/JPEG, and XPS
<b>Printing from mobile and cloud</b>	AirPrint, Mopria and Universal Print by Microsoft, Canon PRINT Business, uniFLOW Online (optional) A range of software and MEAP-based solutions are available to provide printing from mobile devices or internet-connected devices and cloud-based services depending on your requirements. Please contact your sales representative for further information

## Fonts

PS fonts: 136 Roman  
PCL fonts: 93 Roman, 10 Bitmap fonts, 2 OCR fonts, Andale Mono WT J/K/S/T<sup>1</sup> (Japanese, Korean, Simplified and Traditional Chinese), Barcode fonts<sup>2</sup>

<sup>1</sup> Optional PCL International Font Set-A1 is required.  
<sup>2</sup> Optional Barcode Printing Kit-D1 is required.

## Print Features

Secured Print, Secure Watermark, Header/Footer, Page Layout, Two-sided Printing, Mixed Paper Sizes/Orientations, Front/Back Covers, Toner Reduction, Poster Printing, Forced hold printing, Print Date, Scheduled Printing, Printing Using a Virtual Printer

## Operating System

UFRIL: Windows®7/8.1/10/Server 2008/Server 2008 R2/Server 2012/Server 2012 R2/Server 2016/Server 2019, MAC OS X (10.10 or later)  
PCL: Windows®7/8.1/10/Server 2008/Server 2008 R2/Server 2012/Server 2012 R2/Server 2016/Server 2019  
PS: Windows®7/ 8.1/10/Server 2008/Server 2008 R2/Server 2012/Server 2012 R2/Server 2016/Server 2019, MAC OS X (10.10 or later)  
PPD: Windows®7/8.1/10, MAC OS X (10.9 or later)  
McAfee Embedded Control  
As of July, 2019.

## COPY SPECIFICATIONS

### Copy Speed

iR-ADV DX 6780i:  
Up to 80 ppm (A4), up to 40 ppm (A3), upto 58 ppm (A4R), upto 35 ppm (A5R)

### First-Copy-Out Time (A4)

iR-ADV DX 6780i: Approx. 3.1 seconds or less

### Copy resolution (dpi)

600x 600

### Multiple Copies

Up to 9,999 copies

### Copy Density

Automatic or Manual (9 Levels)

### Magnification

Variable zoom: 25% to 400% (1% Increments)  
Preset reduction/enlargement: 25%, 50%, 70%, 100%(1:1), 141%, 200%, 400%

### Copy Features

Preset R/E Ratios by Area, Two-Sided, Density Adjustment, Original Type Selection, Interrupt Mode, Book to Two Pages, Two-sided Original, Job Build, N on 1, Add Cover, Insert Sheets, Different Size Originals, Page Numbering, Copy Set Numbering, Sharpness, Erase Frame, Secure Watermark, Print Date, Gutter, Print & Check, Negative/Positive, Repeat Images, Merge Job Blocks, Mirror Image, Store in Mail Box, Superimpose Image, Copy ID Card, Skip Blank Pages, Free Size Original, Reserved copy, Copy Sample

## SCAN SPECIFICATIONS

### Type

Single-pass Duplexing Automatic Document Feeder  
[2-sided to 2-sided (Automatic)]  
\*Detect Feeder Multi Sheet Feed is supported.

### Document Feeder Paper Capacity (80 gsm)

up to 200 Sheets

### Acceptable Originals and weights

Platen: Sheet, Book, and 3-Dimensional Objects  
Document Feeder media weight:  
1-sided scanning: 38 to 220 gsm  
2-sided scanning: 38 to 220 gsm  
\*An acceptable weights of A6R or smaller is 50 to 220gsm.

### Supported media sizes

Platen max. scanning size: up to 297.0 x 431.8 mm  
Document Feeder media size:  
A3, A4, A4R, A5, A5R, A6R, B4, B5, B5R, B6R,  
Custom size: 70.0 x 139.7 mm to 304.8 x 431.8 mm

### Scan Speed (ipm, BW/CL, A4)

1-sided Scanning:  
135/135 (300 x 300 dpi, send),  
80/80 (600 x 600 dpi, copy)  
2-sided Scanning:  
270/270 (300 x 300 dpi, send),  
160/90 (600 x 600 dpi, copy)

### Scan Resolution (dpi)

Scan for Copy: 600 x 600  
Scan for Send: (Push) 600 x 600 (SMB/FTP/WebDAV/IFAX), (Pull) 600 x 600  
Scan for Fax: 600 x 600

### Pull Scan Specifications

Colour Network ScanGear2. For both TWAIN and WIA  
Supported OS: Windows®7/8.1/10/Server2008/Server2008 R2/Server2012/Server2012 R2/Server 2016

### Scan Method

Push Scan, Pull Scan, Scan to Box, Scan to Advanced Space, Scan to Network, Scan to USB Memory Key, Scan to Mobile device, Scan to cloud (uniFLOW - Online)

## SEND SPECIFICATIONS

### Destination

Standard: E-mail/Internet FAX (SMTP), SMB3.0, FTP, WebDAV, Mail Box  
Optional: Super G3 FAX, IP Fax

### Address Book

LDAP (2000)/Local (1600)/Speed dial (200)

### Send resolution (dpi)

Push: up to 600 x 600  
Pull: up to 600 x 600

### Communication protocol

File: FTP(TCP/IP), SMB3.0 (TCP/IP), WebDAV  
E-mail/I-Fax: SMTP, POP3

### File Format

Standard: TIFF, JPEG, PDF(Compact, Searchable, Apply policy, Optimize for Web, PDF/A-1b, Trace & Smooth, Encrypted, Device Signature, User Signature), XPS(Compact, Searchable, Device Signature, User Signature), Office Open XML (PowerPoint, Word)

# TECHNICAL SPECIFICATIONS

# imageRUNNER ADVANCE DX 6780i

<b>Universal Send Features</b>	Original Type Selection, Two-sided Original, Book to Two Pages, Different-size Originals, Density Adjustment, Sharpness, Copy Ratio, Erase Frame, Job Build, Delayed Send, Preview, Job Done Notice, File Name, Subject/Message, Reply-to, E-mail Priority, TX Report, Original Content Orientation, Skip Blank Pages	<b>Power consumption</b>	Maximum: Approx. 2,400 W Copying (with DADF continuous scan): Approx. 1,290 W <sup>1</sup> Standby: Approx. 256 W <sup>1</sup> Sleep mode: Approx. 0.9 W <sup>2</sup>
<b>FAX SPECIFICATIONS</b>		<b>Typical Electricity Consumption (TEC)*</b>	iR-ADV DX 6780i: 1.61 kWh *As per USA Energy Star 3.0
<b>Maximum Number of Connection Lines</b>	2	<b>Noise levels</b>	<b>Sound Power Level (LWA<sub>m</sub>)</b> Active (1-sided) iR-ADV DX 6780i: 7.3 B, Kv 0.3 B *Reference value: measured only one unit with ISO7779, described with ISO9296 (2017)
<b>Modem Speed</b>	Super G3: 33.6 kbps G3: 14.4 kbps		<b>Sound Pressure (LpA<sub>m</sub>)</b> Bystander's position: Active (1-sided): iR-ADV DX 6780i: 59 dB* Standby: 37 dB* *Reference value: measured only one unit with ISO7779, described with ISO9296 (2017)
<b>Compression Method</b>	MH, MR, MMR, JBIG	<b>CONSUMABLES</b>	
<b>Resolution (dpi)</b>	400x400 (Ultra Fine), 200x400 (Super Fine), 200x200 (Fine), 200x100 (Normal)	<b>Toner Cartridge</b>	C-EXV 36 Black Toner
<b>Sending/Receiving Size</b>	Sending: A3, A4, A4R, A5 <sup>1</sup> , A5R <sup>1</sup> , B4, B5 <sup>2</sup> , B5R <sup>1</sup> Receiving: A3, A4, A4R, A5R, B4, B5, B5R <sup>1</sup> Sent as A4 <sup>2</sup> Sent as B4 short	<b>Toner (Estimated Yield @6% Coverage)</b>	56,000 pages
<b>FAX memory</b>	Up to 30,000 pages (2,000 jobs)	<b>SOFTWARE AND PRINTER MANAGEMENT</b>	
<b>Speed dials</b>	Max. 200	<b>Tracking and reporting</b>	For detailed information please visit our website <a href="https://www.canon-europe.com/business/">https://www.canon-europe.com/business/</a> Universal Login Manager (ULM) <a href="#">uniFLOW Online Express!</a> *For more information, please refer to uniFLOW Online Express/uniFLOW Online Technical Datasheets
<b>Group dials/destinations</b>	Max. 199 dials	<b>Remote management tools</b>	iW Management Console eMaintenance Content Delivery System
<b>Sequential broadcast</b>	Max. 256 addresses	<b>Scanning software</b>	Network ScanGear
<b>Memory backup</b>	Yes	<b>Optimisation tools</b>	Canon Driver Configuration Tool NetSpot Device Installer
<b>Fax Features</b>	Sender's Name (TTI), Selecting the Telephone Line (when sending fax), Direct Send, Delayed Send, Preview, Job Done Notice, TX Report, Interrupt Transmission, Sequential Broadcasting, Password/Subaddress Sending, Confidential Mailbox, 2 on 1 Log	<b>Platform</b>	MEAP (Multifunctional Embedded Application Platform)
		<b>Document Administration</b>	Kofax Power PDF (Optional)
<b>STORE SPECIFICATIONS</b>		<b>FIERY PRINT CONTROLLER SPECIFICATIONS</b>	
<b>Mail Box (Number supported)</b>	100 User Inboxes, 1 Memory RX Inbox, 50 Confidential Fax Inboxes Maximum 30,000 Pages (2,000 jobs) Stored	<b>Optional/Standard</b>	Optional on all models
<b>Advanced Space</b>	Communication Protocol: SMB or WebDAV SUPPORTED CLIENT PC: WINDOWS* 8/1/0 CONCURRENT CONNECTIONS (MAX.): SMB:64, WEBDAV:3	<b>Name</b>	Canon imagePASS-Y3 V1.1 (Server)
<b>Advanced Space available disc space</b>	Standard:16 GB (With option: max. 480GB.)	<b>Print Resolution (dpi)</b>	1200 x 1200, 600 x 600
<b>Advanced Space Features</b>	Authentication for Advanced Space Log-in, Sort Function, Printing a PDF File with a Password, imageWARE Secure Audit Manager Support, Search, File Preview, Authentication Management, Open to public, URI TX, Backup/Restore	<b>Page Description Language(s)</b>	PCL6, Adobe PostScript 3
		<b>Memory</b>	8GB (2 x4GB)
<b>SECURITY SPECIFICATIONS</b>		<b>Hard Disk Drive</b>	500 GB SATA
<b>Authentication and Access Control (activation required)</b>	User Authentication (Picture Login, Picture and PIN Login, Card Login, Username and Password Login, Function Level Login, Mobile Login), Department ID Authentication (Department ID and PIN Login, Function Level Login), uniFLOW Online Express (PIN Login, Picture Login, Picture and PIN Login, Card Login, Card and PIN Login, Username and Password Login, Department ID and PIN Login, Function Level Login), Access Management System (Access Control)	<b>Processor Speed</b>	Intel Pentium G4400 (3.3GHz)
		<b>System</b>	FS350 Pro
<b>Document Security</b>	Print Security (Secure Print, Encrypted Secure Print, Forced Hold Printing, uniFLOW Secure Print <sup>1</sup> ), Receive Data Security (Confidential Fax Inbox Forwarding Received Documents Automatically), Scan Security (Encrypted PDF, Device Signature PDF/XPS, User Signature PDF/XPS, Adobe LiveCycle® Rights Management ES2.5 Integration), BOX Security (Mail Box Password Protected, Advanced Space Access Control), Send Data Security (Setting for requesting password input per transmission, Restricted E-mail/File send functions, Confirming FAX number, Allow/Restrict Fax Driver Transmissions, Allow/Restrict Sending from History, S/MIME Support), Document Tracking (Secure Watermark) <sup>1</sup> Requires uniFLOW Online / uniFLOW	<b>Fonts</b>	PS: 138 Fonts PCL: 113 Fonts
<b>Network Security</b>	TLS 1.3, IPsec, IEEE802.1X authentication, SNMP V3.0, Firewall Functionality (IP/MAC Address Filtering), Dual Network Support (Wired LAN/Wireless LAN, Wired LAN/Wired LAN), Disabling Unused Functions (Enabling/Disabling Protocols/Applications, Enabling/Disabling Remote UI, Enabling/Disabling USB Interface), Communication Line Separation (G3 FAX, USB Port, Advanced Space, Scan and Send -Virus Concerns for E-mail Reception)	<b>Supported Operating Systems</b>	Windows 7 64 bit/Windows 8.1 64 bit/Windows 10 64 bit/Windows Server 2008 R2 64bit only/Windows Server 2012 64bit only (Only Printer driver support)/Windows Server 2012 R2 64bit only/Windows Server 2016 R2 64 bit only, MAC OS (10.11, 10.12, 10.13, 10.14)
<b>Device Security</b>	Protecting HDD Data (HDD Data Encryption (FIPS140-2 Validated), HDD Data Overwrite Erase, HDD Lock), Standard HDD Initialize, Trusted Platform Module (TPM), Job Log Conceal Function, Protecting MFD Software Integrity, Checking MFD Software Integrity (Verify System at Startup, Runtime Intrusion Detection), Comply IEEE2600.2 (Common Criteria Certification) (TBD)	<b>Interface</b>	2 x Ethernet (1000Base-T/100Base-TX/10Base-T), USB 3.0 x 2 (rear), x 3 (front on Fiery Quick Touch TM), USB 2.0 x 4 (rear)
<b>Device Management and Auditing</b>	Administrator Password, Digital Certificate And Key Management, Audit Log, Cooperating with External Security Audit System (Security Information and Event Management), Image Data Logging, Security Policy Setting	<b>Network protocols</b>	TCP/IP (FTP, SMTP, POP, HTTP, SNMP, LDAP, SLP, SMB, LPD, IPP, WS-Discovery, Bonjour, Direct Mobile Printing, Port9100, SNT, 802.1X, DHCP, DNS, NTP)
<b>ENVIRONMENTAL SPECIFICATIONS</b>		<b>Direct Print</b>	PDF1.7, EPS, TIFF6, JDF1.4/JMF (Optional)
<b>Operating Environment</b>	Temperature: 10 to 30°C Humidity: 20 to 80 % RH (Relative Humidity)	<b>VDP</b>	FreeForm v1, v2.1, PPLM, PDF/VT-1, PDF/VT-2, Creo VPS
<b>Power Source</b>	220-240V, 50/60Hz, 10A	<b>Fiery Print Controller Standard Features</b>	Fiery Command WorkStation6/Paper Catalog, Fiery Remote Scan/Fiery Hot Folders & Virtual Printers/Fiery JDF
		<b>Fiery Print Controller Options</b>	Fiery Impose/Fiery Compose/Fiery Impose and Compose/Removable HDD kit/ Fiery Image Viewer
		<b>HW Platform</b>	NX One
		<b>BASE OS</b>	Windows 10 IoT Enterprise 2019 LTSC
		<b>Power source</b>	AC100-240V, 50Hz/60Hz, 3.0A (100V) - 1.5A (240V)
		<b>Maximum Power consumption</b>	53 W
		<b>DIMENSIONS (W X D X H)</b>	203 x 248 x 384 mm
		<b>Weight</b>	Server unit only: Approx. 5.9kg
		<b>PAPER SUPPLY OPTIONS</b>	
		<b>Paper Deck Unit-E1</b>	Paper Capacity: 3,500 sheets (80 gsm) Paper Type: Thin, Plain, Recycled, Color, Heavy, Bond, Pre-punched, Letterhead Paper Size: A4, B5 Paper Weight: 52 to 256 gsm Power Source: from the Main Unit Dimensions (W x D x H): 340 x 630 x 572 mm (attached to the main unit) Weight: Approx. 34 kg



# TECHNICAL SPECIFICATIONS

# imageRUNNER ADVANCE DX 6780i

<p><b>POD Deck Lite-C1</b></p>	<p>Paper Capacity: 3,500 sheets (80 gsm)          Paper Type: Thin, Plain, Recycled, Color, Heavy, Tracing, Bond, Transparency, Label, Pre-punched, Letterhead, Tab          Paper Size:          A3, A4, A4R, B4, A5R, B5, B5R,          Custom size: 139.7 x 182.0 mm to 297.0 to 487.7 mm          Paper Weight: 52 to 256 gsm          Power Source: 220-240V, 50/60Hz, 1.2A          Dimensions (W x D x H): 633 x 686 x 574 mm          (attached to the main unit)          Weight: Approx. 68 kg</p>	<p><b>Document Insertion Unit-P1</b></p>	<p>(Requires either the Staple Finisher-AC1 or Booklet Finisher-AC1)          Number of trays: 1          Tray Capacity: 100 Sheets (with 80 gsm paper)          Acceptable Paper Type: Thin, Plain, Recycled, Color, Heavy, Coated, Bond, Letterhead, Tab          Acceptable Paper Sizes: A3, A4, A4R, B4, B5, B5R          Acceptable Paper Weight: 60 to 256 gsm          Power Source: 100-240V, 50/60Hz, 1.0A          Dimensions (W x D x H): 247 x 679 x 1,242 mm          (attached to the device; width excluding document tray)          Weight: Approx. 40 kg</p>
<p><b>OUTPUT OPTIONS*</b>  <b>Copy Tray-R2</b></p>	<p>*Paper capacity may vary with different of paper type/size.          Provides a simple tray for basic output needs.          Capacity: 250/100 sheets (1-sided/2-sided, 80 gsm)          Dimensions (W x D x H): 420 x 382 x 175 mm</p>	<p><b>Document Insertion / Folding Unit-J1</b></p>	<p>(Requires either the Staple Finisher-AC1 or Booklet Finisher-AC1)          Number of trays: 1          Supported Folding Type: Z-Fold, C-Fold          Acceptable Paper Type:          Insertion Unit: Thin, Plain, Recycled, Color, Heavy, Coated, Bond, Letterhead, Tab          Z-Fold/C-Fold: Thin, Plain, Recycled, Color          Acceptable Paper Sizes:          Insertion Unit: A3, A4, A4R, B4, B5, B5R          Z-Fold: A3, A4R, B4          C-Fold: A4R          Acceptable Paper Weight:          Insertion Unit: 60 to 256 gsm          Z-Fold/C-Fold: 60 to 105 gsm          Output Capacity (with 80 gsm paper):          Insertion: 100 Sheets          Z-Fold*: A3, B4: 30 sheets (80 gsm)          A4R: 10 sheets          C-fold: A4R: 40 sheets (80 gsm)          *Z-Fold output to the Staple Finisher-AC1 or Booklet Finisher-AC1          Power Source: 100-240V, 50/60Hz, 1.0A          Dimensions (W x D x H): 247 x 679 x 1,242 mm (attached to the device; width excluding document tray)          Weight: Approx. 76 kg</p>
<p><b>Staple Finisher-AC1</b></p>	<p>Tray Capacity (with 80gsm paper):          Upper Tray: A4, A5, A5R, A6R, B5: 250 sheets          A3, A4R, B4, B5R: 125 sheets          Mid Tray: Same as upper tray          Lower Tray: A4, A5, A5R, B5: 3,000 sheets          A3, A4R, B4, B5R: 1,500 sheets          A6R: 250 sheets          Paper Weight: 52 to 256 gsm          Staple Position: Corner, Double          Staple Capacity:          A4, B5: 65 sheets (52 to 90 gsm)          A3, A4R, B4: 40 sheets (52 to 90 gsm)          Eco Staple: A3, A4          5 sheets (52 to 64 gsm)          4 sheets (65 to 81.4 gsm)          3 sheets (82 to 105 gsm)          Staple On Demand: 65 sheets          Power supply: From the main unit          Dimensions (W x D x H): 656 x 623 x 1,195 mm          (when the extension tray and rotary tray are extended)          Weight: Approx. 36 kg</p>	<p><b>HARDWARE ACCESSORIES</b></p> <p><b>Card Readers</b></p> <p>Various card readers available e.g. MiCard Plus. Please contact local Canon Office for more details.          Copy Card Reader-F1          Copy Card Reader Attachment-A4</p> <p><b>Others</b></p> <p>Upright Control Panel-J1          Utility Tray-B1          Tab Feeding Attachment Kit-B1          Shift Tray-F1          Numeric Keypad-A1          Finisher Jogger Kit-A1</p>	<p><b>SECURITY OPTIONS</b></p> <p><b>Data security</b></p> <p>2.5inch/250GB HDD-N1          2.5inch/1TB HDD-P1          HDD Mirroring Kit-J1</p>
<p><b>Booklet Finisher-AC1</b></p>	<p>(Includes the above Staple Finisher-AC1 basic staple specifications.)          Saddle Stitch paper size: A3, A4R, B4, Custom Size (195.0 x 270.0 mm to 297.0 x 431.8 mm)          Saddle Stitch Staple Capacity: 20 sheets x 10 sets (52 to 81.4 gsm) (including 1 cover sheet up to 256 gsm)          Non Staple Folded Bunch Capacity: 3 sheets (52 to 105 gsm)          Power supply: From the main unit          Dimensions (W x D x H): 656 x 623 x 1,195 mm          (when the extension tray and rotary tray are extended)          Weight: Approx. 60 kg</p>	<p><b>SYSTEM AND CONTROLLER OPTIONS</b></p> <p><b>Print Accessories</b></p> <p>PCL International Font Set-A1          PS Printer Kit-BC1</p> <p><b>Barcode Printing</b></p> <p>Barcode Printing Kit-D1</p> <p><b>Efi-Fiery Based Controller</b></p> <p>imagePASS-Y3 V1.1</p> <p><b>Efi-Fiery Based Controller Options</b></p> <p>Fiery Impose          Fiery Compose          Fiery Impose and Compose          Fiery ImageViewer          Removable HDD Kit-B6</p>	<p><b>OTHER OPTIONS</b></p> <p><b>Accessibility Accessories</b></p> <p>ADF Access Handle-A1          Voice Guidance Kit-G1          Voice Operation Kit-D1</p>
<p><b>2/4 HOLE PUNCHER UNIT-A1</b></p>	<p>(Requires either the Staple Finisher-AC1 or Booklet Finisher-AC1)          Two or Four Holes          Acceptable Punch Paper Weight: 52 to 256 gsm          Acceptable Punch Paper Size:          Two holes A3, A4, A4R, A5, B4, B5, B5R          Four holes A3, A4          Power Source: From the finisher</p>	<p><b>System Accessories</b></p> <p>Serial Interface Kit-K3          NFC Kit-E1          Copy Control Interface Kit-A1          Connection Kit-A2 for Bluetooth LE</p>	<p><b>OTHER OPTIONS</b></p> <p><b>Staple Cartridge</b></p> <p>Staple Cartridge-X1          Staple Cartridge-Y1</p>
<p><b>4 Hole Puncher Unit-A1</b></p>	<p>(Requires either the Staple Finisher-AC1 or Booklet Finisher-AC1)          Four Holes          Acceptable Punch Paper Weight: 52 to 256 gsm          Acceptable Punch Paper Size:          Four holes A3, A4, A4R, A5, B4, B5, B5R          Power Source: From the finisher</p>	<p><b>Fax Accessories</b></p> <p>Super G3 FAX Board-AS1          Super G3 2nd Line Fax Board-AS1          Remote Fax Kit-A1          IP FAX Expansion Kit-B1</p>	

## Software & Solutions



## Certifications and compatibility



Canon Inc.  
 canon.com  
 Canon Europe  
 canon-europe.com  
 English edition  
 © Canon Europa N.V., 2020