



i-SENSYS X C1530P II Series

ONE OF THE MOST SECURE, SUSTAINABLE AND PRODUCTIVE SINGLE-FUNCTION PRINTERS FROM i-SENSYS X RANGE



PRODUCTIVITY



SECURITY



CONNECTIVITY



COMPACT DESIGN



CONTROL &
MAINTENANCE



SUSTAINABILITY

Canon

i-SENSYS X C1530P II Series

PRODUCTIVITY

- Fast print and scan speeds
- Automatic double-sided printing
- Up to 2,300 sheets paper input

CONNECTIVITY

- Connect to cloud directly from the device for simple storage solutions or through Canon's uniFLOW Online for secure advanced scan workflows
- Print and scan from mobile devices wherever you are

CONTROL AND MAINTENANCE

- Cloud based output management for centralised control
- Flexible user management solutions
- Remote access to device control functions
- Toner status tool reduces downtime

SECURITY

- Embedded User Authentication secures access to device
- Encrypted Secure Print function prevents unauthorised viewing of printed material
- Verify System at Start-up enhances device integrity

COMPACT DESIGN

- Small footprint, ideal as a desktop configuration
- All-in-one cartridge with increased toner yield
- Optional cassettes for enhanced input capacity
- Easy access to replace consumables

SUSTAINABILITY

- Low TEC (Typical Electrical Consumption) decreases power consumption to save energy and lower running costs
- Sleep mode and low melting point toner reduce energy consumption further
- Auto Duplex Print saves on paper wastage

i-SENSYS X C1530P II SERIES DETAILS

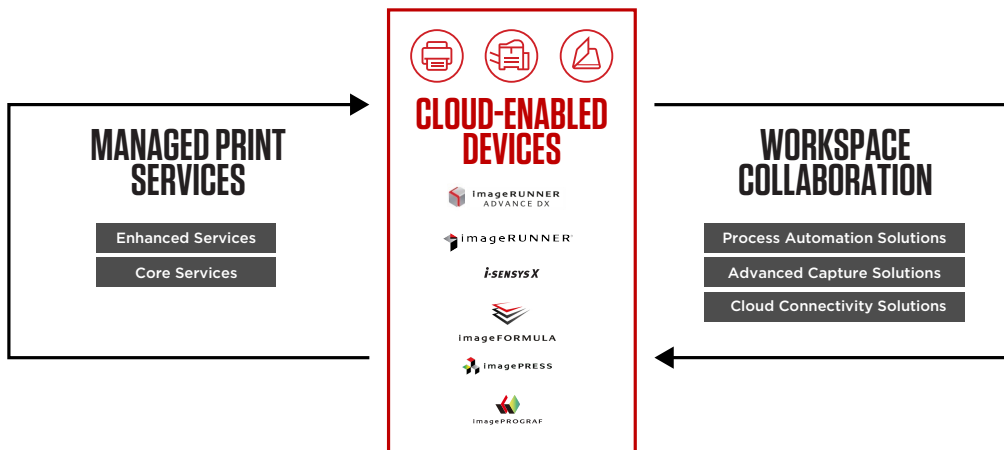
i-SENSYS X C1533P II:

- Print Speed: 33 ppm (A4)
- Automatic duplex printing
- uniFLOW compatibility
- Max paper input capacity: 650-2,300 Sheets

i-SENSYS X C1538P II:

- Print Speed: 38 ppm (A4)
- Automatic duplex printing
- uniFLOW compatibility
- Max paper input capacity: 650-2,300 Sheets

TAILORED SOLUTIONS TO MEET EVERY CHALLENGE



Canon's Digital Transformation Services (DTS), bring together our leading hardware and software into an integrated technology ecosystem, designed to support your transformation journey. This offering combines Managed Print Services and Workspace Collaboration solutions, to help you gain transparency and control over the entire document lifecycle.

TECHNICAL SPECIFICATIONS

i-SENSYS X C1530P II Series

PRINTER ENGINE

Print speed	i-SENSYS X C1533P II: Single sided : Up to 33 ppm (A4) Up to 55 ppm(A5-Landscape) Double sided : Up to 33 ipm (A4)
	i-SENSYS X C1538P II: Single sided : Up to 38 ppm (A4) Up to 59 ppm(A5-Landscape) Double sided : Up to 38 ipm (A4)
Printing method	Colour laser beam printing
Print resolution	Up to 1200 x 1200 dpi
Warm-up time	Print ready message shown: Approx. 2 seconds or less from power on
First Page Out Time	Colour: approx. 6.3 seconds Mono: approx. 5.3 seconds
Recommended Monthly Print Volume	i-SENSYS X C1533P II: 1,000-5,000 pages i-SENSYS X C1538P II: 1,500-5,000 pages
Duty cycle	i-SENSYS X C1533P II: 40,000 pages i-SENSYS X C1538P II: 50,000 pages
Print margins	4 mm-top, bottom, left and right
Advanced printing features	Encrypted Secure Print Secure Print Print from USB memory key (JPEG/TIFF/PDF/XPS) Barcode Print ¹ iOS: AirPrint, Canon PRINT Business app Android; Mopria certified, Canon Print Service Plug-in, Canon PRINT Business app Microsoft Universal Print

MEDIA HANDLING

Paper input (Standard)	550-sheet cassette 100-sheet multi-purpose tray
Paper input (Option)	550-sheet cassette x 3 (Paper Feeder PF-D1) 550-sheet cassette (Cassette Feeding Unit-AV1)
Maximum paper input capacity	2,300-sheets
Paper output	200-sheet
Media types	Multi-Purpose Tray: Plain paper, Recycled paper, Heavy Paper, Thin paper, Colour paper, Coated paper, Pre-punched, Post card, Envelope Cassette: Plain paper, Recycled paper, Heavy Paper, Thin paper, Label, Colour paper, Coated paper, Pre-punched
Media sizes	Cassette (Standard): A4, A5, A5 (Landscape), A6, B5, B6, Letter, Executive, Statement, GLTR, 16K, Custom sizes: Min. 101.6 x 148 mm Max. 216.0 x 297 mm. Multi-purpose tray: A4, A5, A5 (Landscape), A6, B5, B6, Legal, Letter, Executive, Statement, OFFICIO, B-OFFICIO, M-OFFICIO, GLTR, ILGL, GLGL, Foolscap, 16K, Post card, Envelop (COM10, Monarch, C5, DL), Custom sizes: Min. 76.2 x 127 mm Max. 216.0 x 355.6 mm Cassette (Optional): A4, A5, A5 (Landscape), A6, B5, B6, Legal, Letter, Executive, Statement, GLTR, ILGL, GLGL, Foolscap, F4A, 16K, Custom sizes: Min. 101.6 x 148 mm Max. 216.0 x 355.6 mm
Media weights	Cassette (standard and optional): 60 to 163 g/m ² Multi-purpose tray: 60 to 216 g/m ²
Double sided printing	Automatic Cassette: A4, A5, B5, Legal, Letter, Executive, OFFICIO, B-OFFICIO, M-OFFICIO, GLTR, ILGL, GLGL, Foolscap, F4A, 16K Custom size - Min. 148 x 210 mm Max. 216 x 355.6 mm 60 to 163 g/m ²

GENERAL FEATURES

Power requirements	220-240V (±10%) 50/60Hz (±2Hz)
Power consumption	Maximum: Approx. 1500W or less Active: i-SENSYS X C1533P II Approx. 640W or less i-SENSYS X C1538P II Approx. 640W or less Standby: Approx. 30.1W or less Sleep: Approx. 0.9W or less Typical Electricity Consumption (TEC): ⁷ i-SENSYS X C1533P II: 0.34kWh/week i-SENSYS X C1538P II: 0.39kWh/week For detailed information relating to Lot26 regulation, please go to: http://www.canon-europe.com/For_Work/Lot26/index.aspx

Noise level

	i-SENSYS X C1533P II: Sound power ² Active: Simplex 65 dB or less (BW) / 65 dB or less (CL) Duplex 67 dB or less (BW) / 67 dB or less (CL) Standby: 48 dB or less Sound pressure ² Active: Simplex 50 dB or less (BW) / 51 dB or less (CL) Duplex 52 dB or less (BW) / 52 dB or less (CL) Standby: 33 dB or less
	i-SENSYS X C1538P II: Sound power ² Active: Simplex 65 dB or less (BW) / 66 dB or less (CL) Duplex 67 dB or less (BW) / 68 dB or less (CL) Standby: 48 dB or less Sound pressure ² Active: Simplex 50 dB or less (BW) / 51 dB or less (CL) Duplex 52 dB or less (BW) / 52 dB or less (CL) Standby: 33 dB or less 458 mm x 464 mm x 388 mm Approx. 25 kg Temperature: 10 to 30°C (50 to 86°F) Humidity 20 to 80% RH (no condensation) 5 Line LCD, 5 LED (Online, Ready, Message, Job and Energy saver), Buttons, 10-key numeric keypad

Dimensions (W x D x H)

Weight

Operating environment

Control panel

CONTROLLER

Processor Speed

Memory

Storage

Printer Languages

Fonts

Interface and connectivity

Network Protocol

Software and Printer Management

Operating Systems Compatibility

	i-SENSYS X C1533P II: Sound power ² Active: Simplex 65 dB or less (BW) / 65 dB or less (CL) Duplex 67 dB or less (BW) / 67 dB or less (CL) Standby: 48 dB or less Sound pressure ² Active: Simplex 50 dB or less (BW) / 51 dB or less (CL) Duplex 52 dB or less (BW) / 52 dB or less (CL) Standby: 33 dB or less
	i-SENSYS X C1538P II: Sound power ² Active: Simplex 65 dB or less (BW) / 66 dB or less (CL) Duplex 67 dB or less (BW) / 68 dB or less (CL) Standby: 48 dB or less Sound pressure ² Active: Simplex 50 dB or less (BW) / 51 dB or less (CL) Duplex 52 dB or less (BW) / 52 dB or less (CL) Standby: 33 dB or less 458 mm x 464 mm x 388 mm Approx. 25 kg Temperature: 10 to 30°C (50 to 86°F) Humidity 20 to 80% RH (no condensation) 5 Line LCD, 5 LED (Online, Ready, Message, Job and Energy saver), Buttons, 10-key numeric keypad
	1.6GHz x 2 2GB 32GB eMMC (available space 15GB) UFRII (Ultra Fast Rendering), PCL5c ³ , PCL6, Adobe® PostScript ³ 93 PCL fonts (93 Roman, 10 Bitmap fonts, 2 OCR fonts) Andalé Mono WT J/K/S/T (Japanese, Korean, Simplified and Traditional Chinese) ^{4*} Barcode Fonts ⁵ 136 PostScript fonts USB 2.0 Hi-Speed, 10BASE-T/100BASE-TX/1000Base-T, Wireless 802.11b/g/n, Wireless Direct Connection Print: TCP/IP (LPD/Port9100/IPP/IPPS/FTP/WSD) Management: SNMPv1, SNMPv3 (IPv4,IPv6) Security: TLS1.3, IPsec, IP/Mac address filtering, IEEE802.1X (LAN/WLAN), SNMPv3, SSL (HTTPS, IPPS), Dual Network Support Security (wireless): Infrastructure Mode: WEP(64/128 bit), WPA-PSK(TKIP/AES), WPA2-PSK (TKIP/AES), WPA3-SAE (AES), WPA-EAP (AES), WPA2-EAP (AES), WPA3-EAP (AES) Access Point Mode: WPA2-PSK(AES) Wi-Fi Direct Mode: WPA2-PSK (AES) Remote User Interface (RUI), Remote Operation Viewer, Department ID Management, Toner Status Tool, iW Enterprise Management Console: Server-based software for centralised management of a fleet of devices eMaintenance: embedded RDS allows remote eMaintenance services such as meter capture, automatic consumables management and remote diagnostics. Content Delivery System: Server platform enables automatic firmware update to the device. uniFLOW online / uniFLOW compatibility Windows® 10 / Server® 2022 / Server® 2019 / Server® 2016 / Mac OS X version 10.15 & up Linux ² /Citrix

TECHNICAL SPECIFICATIONS

i-SENSYS X C1530P II Series

CONSUMABLES

All-in-One cartridges

TONER T10 Black (13,000 pages ⁵⁾
TONER T10 Cyan (10,000 pages ⁶⁾
TONER T10 Magenta (10,000 pages ⁶⁾
TONER T10 Yellow (10,000 pages ⁶⁾
TONER T10L Black (6,000 pages ⁶⁾
TONER T10L Cyan (5,000 pages ⁶⁾
TONER T10L Magenta (5,000 pages ⁶⁾
TONER T10L Yellow (5,000 pages ⁶⁾

ACCESSORIES/ OPTIONS

Items

Paper Feeder PF-D1 (550-sheet cassette) x 3
CST.Feeding Unit-AV1 (550-sheet cassette pedestal)
Barcode Printing Kit-D1 (Enables barcode printing capability)
PCL Font Set-A1 (Enables Unicode printing capability on SAP and supports Andale font)
Plain Pedestal-P2
Plain Pedestal-AA1
MiCard Multi (Card reader for identification with RFID or magnetic cards with uniFLOW)
Micard Plus (Card reader for identification with RFID or magnetic cards with uniFLOW)

Notes

- ^[1] Accessory - Barcode Printing Kit-D1 - is required
- ^[2] Declared noise emission in accordance with ISO 9296
- ^[3] A Canon PCL5c driver is not supplied, however PCL5c commands are supported on the device.
- ^[4] Accessory - PCL FONT SET-A1E - is required
- ^[5] Web distribution only. Driver will be available in 1H, 2024
- ^[6] Based on ISO/IEC 19798
- ^[7] As per US ENERGY STAR® version 3.2

Software & Solutions



Compatibility



Canon Inc.
canon.com

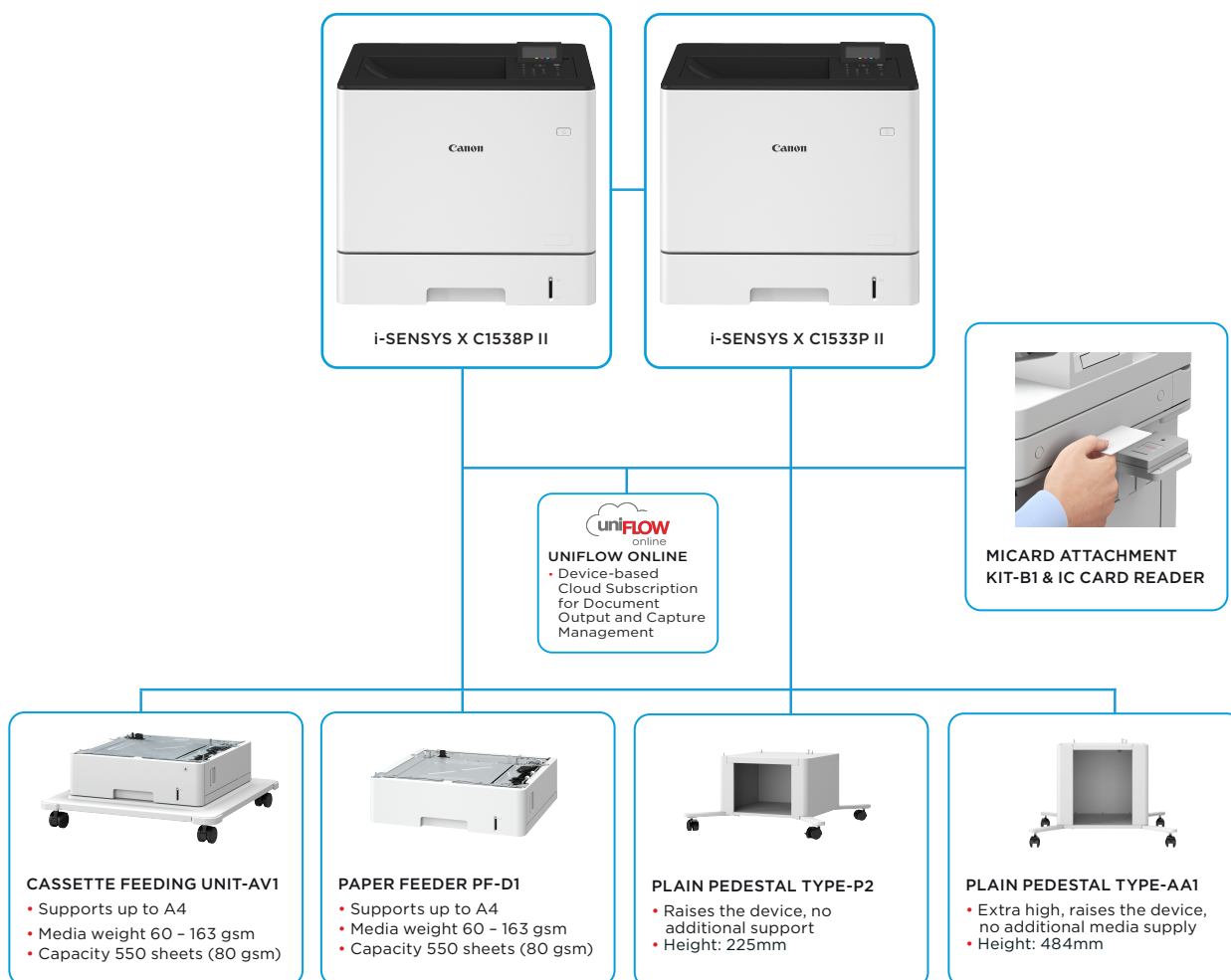
Canon Europe
canon-europe.com

English edition
© Canon Europa N.V., 2024

i-SENSYS X C1530P II Series

ONE OF THE MOST SECURE, SUSTAINABLE AND PRODUCTIVE SINGLE-FUNCTION PRINTERS FROM I-SENSYS X RANGE

MAIN CONFIGURATION OPTIONS



This flat configuration is for illustration purpose only. For a complete list of options and the exact compatibility relationships, please refer to the [online product configurator](#)