

# LEVEL UP YOUR GAME

Colorado M-series



**Canon**

# READY, SET, GO!

## Are you ready for the next level?

With the Colorado M-series, 1.6m roll-to-roll printers powered by the patented UVgel technology, you'll level up your business, your creativity and your profitability.

Say 'yes' to more jobs, no matter how challenging, and meet your high productivity and turnaround standards at the same time. Create unique applications with matte and glossy elements in the same print, without varnish. Maximise your profit potential with the smartest financial investment in the large-format graphics business. What's even better: this next-generation Colorado M-series is upgradeable in the field, allowing you to level up your machine as you level up your business.

## The power of UVgel, now with white ink!

The proven UVgel ink technology is unique in the market, and the Colorado printers were developed to allow you to get the most out of its features. Now, we are setting new standards with UVgel white ink. And not just any white:

## White ink without worry

- High opacity
- Same ease of maintenance as any other colour
- High-speed white production

## LEVEL UP YOUR CREATIVITY

Wide, unique application range including white ink

## LEVEL UP YOUR PRINTER

Modular design, field-upgradeable



## LEVEL UP YOUR BUSINESS

A smart financial investment

## LEVEL UP YOUR PRODUCTIVITY

Productive and sustainable by nature

### The Colorado M-series overview

A fully modular and in-field upgradeable platform.



Colorado  
M3



Colorado  
M3W



Colorado  
M5



Colorado  
M5W



UVgel  
Packaging  
Factory



UVgel  
Wallpaper  
Factory



UVgel  
Print  
Factory

# LEVEL UP YOUR CREATIVITY

Wide and unique application range  
including white ink

The original Canon Colorado series was designed for a wide application range. Today's Colorado M-series takes media, ink, and print mode possibilities to the next level, to inspire your creative ambitions and impress your customers with reliable quality, great turnaround times and unique applications.

## White ink without worry

Have you heard that printing with white ink is a hassle? That it is slow, wasteful, high-maintenance and simply not as beautiful as you envisioned? With the new Colorado M-series and UVgel technology, you can lay these worries to rest. Our highly productive UVgel white ink works as any other colour: it's up to 3 times faster than comparable technologies, even for multilayer modes, and uses 40% less ink.

## FLXfinish\*

FLXfinish\* is the unique ability to print matte, gloss or mixed matte and gloss in one go, shaking up the world of large-format graphics.

## FLXture

Micro-textured printing with layered ink. With FLXture, you can add subtle surface detail to your prints, creating a luxurious and intriguing feel for your products.

## Wider application range

The Colorado M-series gives your customers even more design freedom, with impressive new media options:

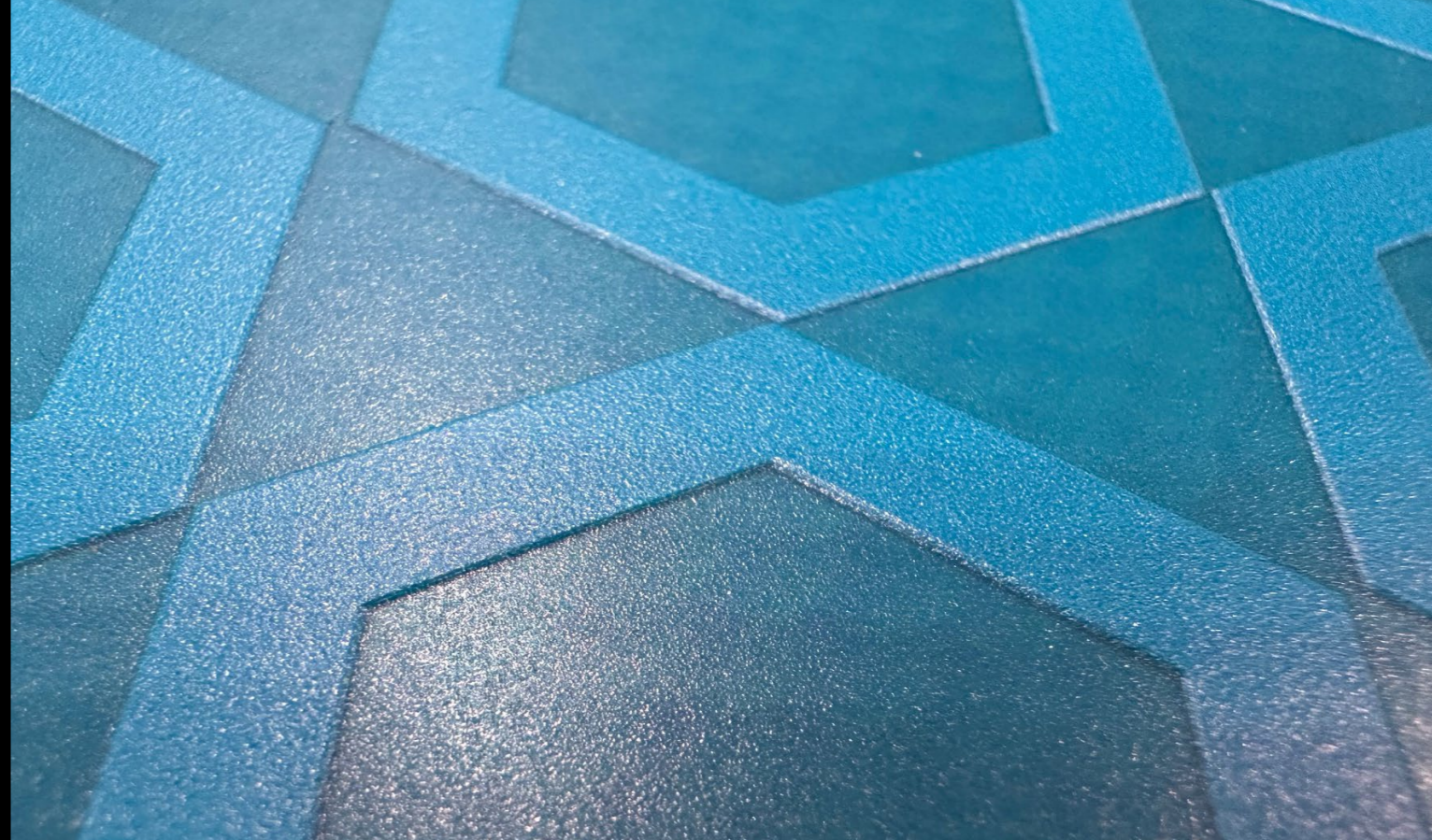
- Textured
- Transparent
- Coloured
- Reflective
- Magnetic

This expands on the wide media range the Colorado printers are known for, including self-adhesive vinyl, paper, banner media, film, canvas and textiles, plus heat-sensitive media and cost-effective uncoated media. Monodirectional print modes are available to reach high quality print on challenging media types.

## Quality guaranteed

The Colorado M-series features the most important industry-standard certifications that guarantee the quality of the print output like 3M™ MCS™ Warranty, Avery Dennison ICS Performance Guarantee and GREENGUARD Gold certification for safe indoor use in the most sensitive environments.





# UVGEL & FLXFINISH<sup>+</sup>

The UVgel quality advantage

The special gel consistency of the UVgel inks make them ideal for fast, high-quality printing. The resulting prints have a wide colour gamut, superior, crisp image quality, and are instantly dry without smudging or sticking.

UVgel prints are robust, flexible, light-fast, and scratch-resistant – even immediately after printing – for a powerful impact in many applications. Because the machine is built to a very high-quality standard, the absence of heat in the curing process and the intrinsic gel properties, the prints have excellent uniformity, repeatability, and colour consistency. From print to print, job to job, and year to year.

## FLXfinish<sup>+</sup>

FLXfinish<sup>+</sup> is the unique ability to print matte, gloss or mixed matte and gloss in one go, shaking up the world of large-format graphics. Made possible by the gelling characteristics of UVgel ink, FLXfinish<sup>+</sup> allows you to add a velvety matte finish to interior décor products, a brilliant gloss finish for display prints, or unique combinations of the two to create attention-grabbing visuals, with perfect registration and without the need for an extra printhead or ink channel. With only one click of a button, FLXfinish<sup>+</sup> helps you improve the value of your products without increasing the complexity of your work.



# FLXTURE

Textured printing with layered UVgel ink

Look no further for the magic touch. With FLXture, you can add subtle surface detail to your prints, creating a luxurious and intriguing feel for your products. You can create these creative print applications with an easy-to-use recipe in our PRISMAguide XL software. It will intelligently prepare layers of UVgel ink to stack on top of each other, unlocking a next-level sensory experience.

## Look and FEEL your applications

Design beautiful, high-value packaging, attention grabbing labels and easily enhance your products with new surface textures without complicated material combinations. Whether you want a subtle background texture, elegantly embossed lettering or a bold futuristic pattern, you can print it on your Colorado M-series printer. A delight to the senses, at the touch of a button.





# WHITE INK WITHOUT WORRY

The Colorado M-series now offers the UVgel advantage also in white. Our highly productive UVgel white ink works as any other colour, with no extra maintenance. It's up to 3 times faster than comparable technologies even for multilayer modes and uses 40% less ink.

The printed white ink keeps its colour over time. It has the flexibility that you expect for all your applications, and lends itself easily for perfect layering – even up to five layers – to be cut, stretched and finished, directly after printing. And the automated maintenance features of the Colorado M-series keep the ink and nozzles ready to print all day, every day.

## Print profitably with white ink

Printing white ink with the Colorado M-series uses significantly less ink and provides less waste. There is no separate action, set-up or maintenance needed to print an application that includes white ink. With productive print modes that are realistic for a high-quality operation, and no hidden costs, applications with white ink are a great way to increase your profit margins.

## PRISMAguide XL for easy, spectacular multilayer white ink applications

- **Spot colour:** printing colour and white at the same time on either coloured or transparent media.
- **Underflood printing:** printing a white layer underneath a colour image to provide a better contrast on coloured or transparent media.
- **Overflood printing:** printing a white layer on top of a colour image on transparent media to provide colour vibrancy for window graphics.
- **3-layer printing:** printing a white layer in between two layers of colour, which is ideal for high-end and day/night backlit signage applications.
- **5-layer printing:** printing consecutive layers of colour, white, black, white and colour for extra opacity, enabling a different image on either side of transparent media to create double-sided window graphics.



**Spot colour**  
Create personalised wrapping paper for all important occasions they will never forget.



**Underflood printing**  
The so-called no-label look labels are printed on a very transparent material and offer a very high quality look.



**5-layer printing**  
Double-sided labels might be the perfect way to differentiate luxury products.



**Underflood printing**  
Print vibrant wallpaper designs on pre-coloured media for an unique interior décor.



A Colorado M-series printer is an investment in taking your business to the next level – today and in the future. Its power and versatility will become the heart of your business, and it can grow with you as you expand.

#### **Rock-solid quality**

The Colorado family is built to last, with high uptime and consistent print output over time. Low-maintenance by design, the Colorado M-series benefits from the availability of Standard and Extended Warranty or Full Service options to increase uptime even further.

#### **Robust and low-maintenance**

Canon's own next level UVgel 425 printhead has doubled the amount of nozzles for maximum speed and reliability, using less printheads. Colorado M-series features a whole new automatic maintenance concept: a tissue cassette which automatically cleans the nozzles, based on real-time nozzle status information, provided by our patented Piezo Acoustic Integrated Nozzle Technology (PAINT).

# LEVEL UP YOUR PRINTER

Modular design,  
field-upgradeable

#### **Smart media handling**

The Colorado M-series also boasts next-level media detection sensors in its media path to support the use of a wider range of media. For instance, it can now use white markers that allow printing on coloured media, and newly developed robust markers for accurate registration on heavily textured media.

#### **One machine, many configurations**

You can configure your Colorado M-series machine to your current business needs. There are many different types of upgrades available for the Colorado M-series, most without needing a service visit:

- In-field speed upgrade, taking your M3 model to an M5 model
- Temporary speed boost for peak periods
- Did you choose a model without white ink? Add it as an upgrade – with just a service visit
- Larger 1l ink bottles, and smaller 0.7l ones – or you can use them both (for the M5 and M5W), for easier stock management
- FLXfinish™: make prints with a glossy or matte finish, or mix both matte and gloss effects within one single print
- Double-sided printing
- Print-side-in printing
- Kit for magnetic media

#### **Minimal operator intervention**

One of the hallmarks of a machine built to industrial standards is its ease of use. The Colorado M-series has many features to reduce labour costs and increase your operators' job satisfaction by freeing them to do more high-value tasks.

- Fast, easy media loading with the option to have two online rolls
- Ink refills during printing
- Canon PRISMAguide XL software to simplify preparation of complex print applications, provide first-time-right printing, and save application recipes for later re-use.

In other words, the Colorado M-series can watch over itself. With the PRISMA remote app, operators can monitor the printer status on their smartphone, smartwatch, or tablet at any time, even when running overnight jobs.

# LEVEL UP YOUR BUSINESS

A smart financial investment

The features of the Colorado M-series printers speak for themselves. But with all of this, is it still affordable? We can answer that with a wholehearted yes. The Colorado M-series was designed with low total cost of ownership in mind, making it a smart financial investment.

## Low operational costs

The Colorado M-series was designed to get the most out of each day, with reliable, consistently high productivity and uptime. The UVgel technology uses less ink and energy than comparable technologies – for stunning results. We also offer the lowest operating cost for white ink in the market. And with our PRISMAguide XL software, you can enjoy first-time-right printing.

## Higher margins

Customers are happy to pay more for creative, high-value applications, especially if they come with a fast turnaround time. The Colorado M-series comes with a wide media range, which is excellent for creativity but also supports cost-conscious media options. With Canon's excellent sensors and software, there is very little waste. Finally, the machine doesn't take an operator's full attention to run, leaving them free for other valuable tasks.

## Future-proof modular build

A key argument for the Colorado M-series is its upgradeability. By investing only in the productivity level, you need right away, you optimise your profitability. And with the upgrades, you are not boxed into your current business level. You can always increase your speed, options, and productivity even further as the need arises, without the need of lengthy service visits.

All in all, this results in a higher return on investment.

When investing in a printer, a make-or-break criterion is: can it get the work done? The Colorado M-series can do that, and more: it takes your productivity to the next level. Smoothly, without fuss and in spectacular quality. And all that at a low total cost of ownership.

## Shorter turnaround times

These days, for most large-format print jobs customers want a 24h turnaround or less. The Colorado M-series and the next-level UVgel technology allow you to say yes to wide-format jobs with ease, even highly challenging ones. Enjoy more colour deposited in fewer passes and prints that are instantly dry and ready for further finishing. And the best part? It's up to 3 times faster than comparable technologies.

## Highly productive UVgel technology

The Colorado M-series takes the benefits of UVgel to the next level. Improved productivity, reliability and ease of use. Whether you choose to add white ink immediately or later on site.

## Safer working environment

Levelling up your business also means making it a great place to work. The Colorado M-series contributes to a pleasant work environment by meeting high standards for its noise and emission levels.

## Canon's sustainable DNA

All our products are built to last, prolonging their lifetime and thereby saving resources, in accordance with Canon's philosophy of Kyosei – living and working together for the common good.



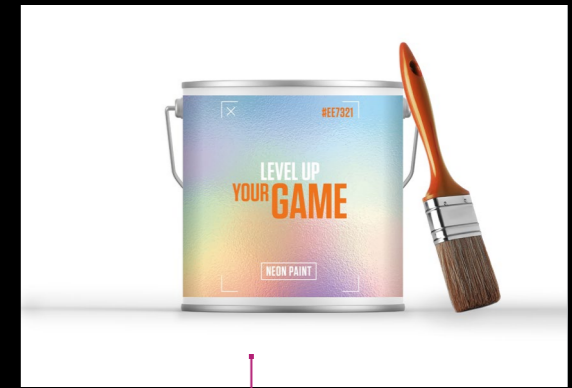
# LEVEL UP YOUR PRODUCTIVITY

Productive and sustainable by nature

# WIDE APPLICATION RANGE



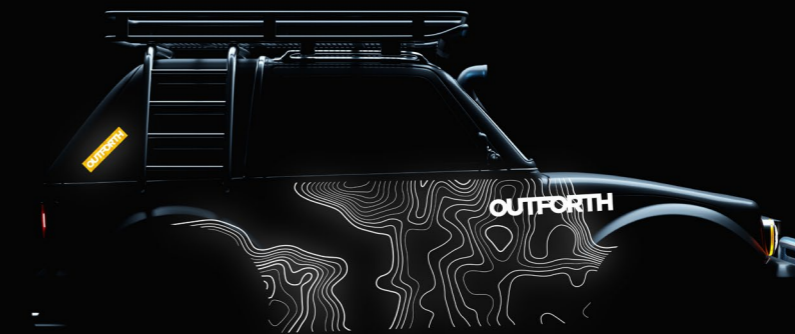
**Floor graphics**  
Robust to walk and work on, with brilliant colours that create an eye-catching image.



**Labels**  
A two-in-one deal: labels provide product information but also attract attention on the store shelves.



**Decals**  
Eye-catching special metallic or holographic stickers to decorate and personalise objects.



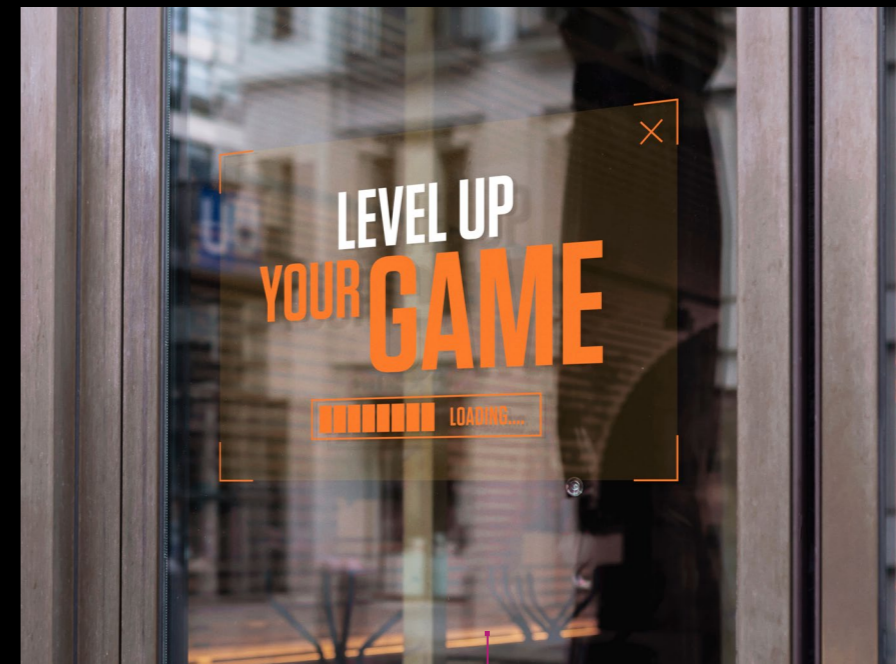
**Fleet graphics**  
The combination of matte or glossy prints increases your design options. 3M MCS-certified, ensuring stretchable, robust & washable prints even without lamination.



**Outdoor advertising**  
Unrivalled low running costs for price-sensitive outdoor banners and blueback applications.



**Backlit light box**  
Powerful, high-density images thanks to UVgel. Now even richer in colour through multi-layer printing



**Window graphics**  
Strong colours on clear media that is often applied wet to reduce bubbles. Wash and weather resistant even without lamination.





**Heat transfer**  
Transfer film and UVgel print, with verified washability. Want to use a standard heat press? No problem! Enjoy limitless creativity.



**Framed soft signage retail poster**  
Environmentally friendly products in style, confirmed by GREENGUARD Gold.

**Photo poster**  
Razor-sharp photographic images thanks to UVgel's excellent dot control.



**Framed canvas**  
Exceptional artistic freedom with flexible, robust UVgel inks for manual or automatic frame mounting.



**Wallpaper**  
Robust, scratch-resistant wallpaper with excellent dimensional stability and colour consistency thanks to UVgel. Digital wallpaper done right!

**Packaging**  
Digital printing with UVgel enables short runs and bespoke designs to increase the joy of unboxing. Litho-laminated or direct onto paperboard.

**Magnetics**  
Extremely easy to install. Works great with UVgel - in white, pre-coloured, PVC-free or any flavour you need. Want to get them on the road? You can use them up to highway speeds on cars, vans and trucks.



**Wrapping paper**  
Create personalised gifts for that perfect moment they will never forget. Of course, printed sustainably with UVgel on uncoated and recyclable media.

# UVGEL PACKAGING FACTORY

Small run. Big impact

As a packaging manufacturer, you are producing high-quality, impactful packaging and POS displays at high volumes. With the UVgel Packaging Factory, you can add the opportunities of in-house digital printing to your business: short, custom runs at digital high speed and quality, to offer your customers even more creative applications. Digital printing offers low start-up costs, high flexibility and lightning-fast turnaround times. With the UVgel Packaging Factory, you can explore the increased demand for custom and personalised packaging material, in a way that perfectly fits in your existing workflows.

## Find new, profitable opportunities

50 boxes in 6 different languages? 200 boxes in several different colours? Major clients who would prefer you to handle all their packaging printing needs, even the small orders? With the UVgel Packaging Factory, you can say 'yes' to these jobs with confidence.

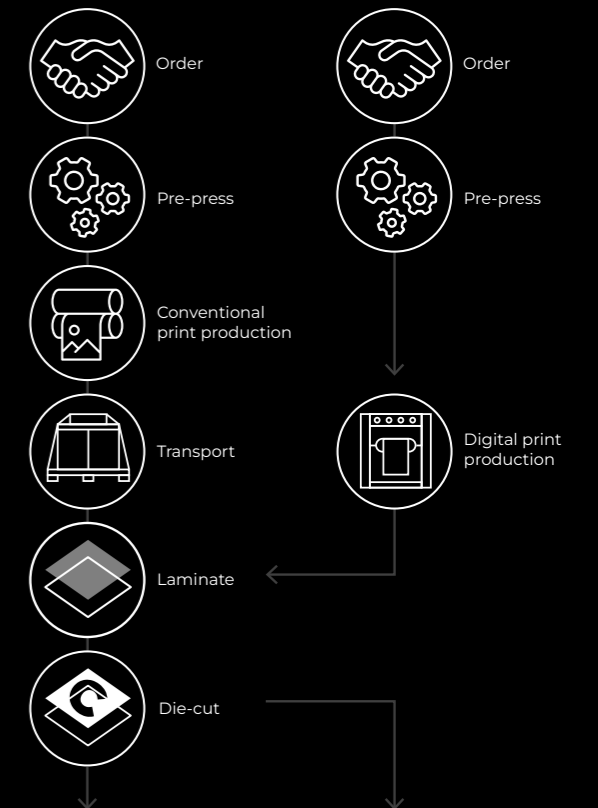
## High-quality digital printing

In a business based around high-volume offset printing and litho-lamination, your UVgel Packaging Factory will slot into your work processes with ease. You can print on the same media as with your analogue press, to the exact same type and size, and with the same flawless finish – and then continue with your regular litho-lamination process. The UVgel Packaging Factory offers more than spectacular digital freedom. UVgel prints are robust and need no lamination, can be glossy and matte in the same print, and have impressive print quality. And with high automation level of the UVgel Packaging Factory, you can confidently leave your print job running overnight.

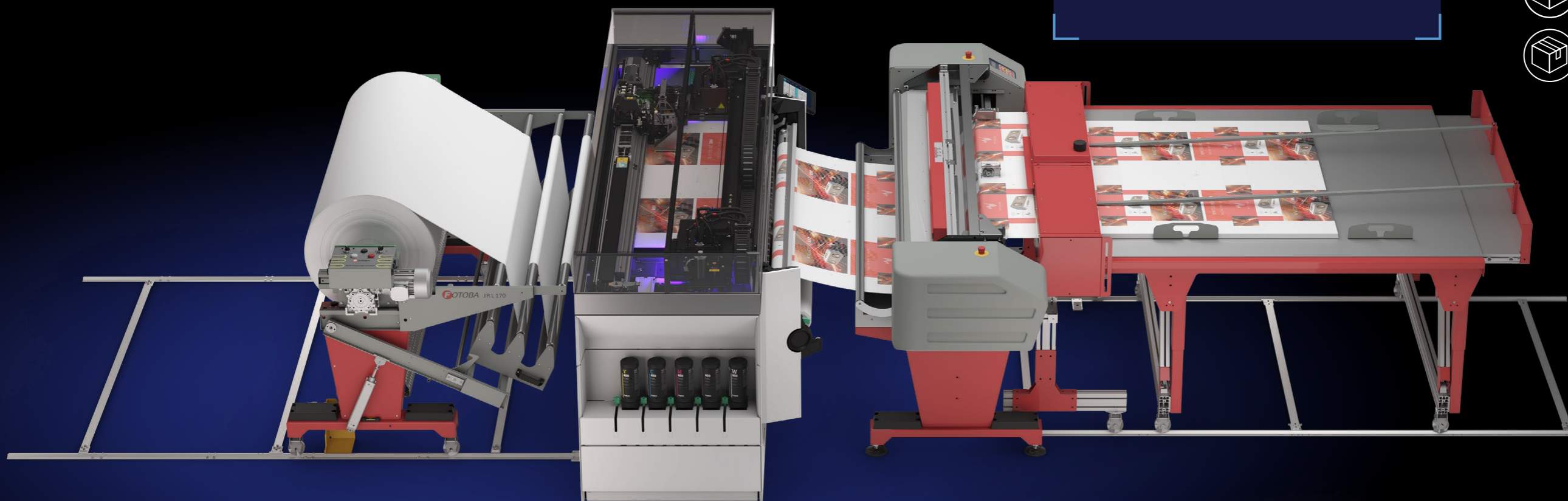
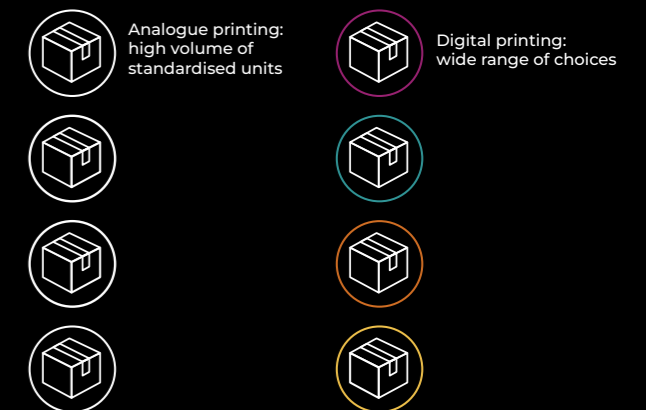
## Add the power of digital to your workflow

- 400kg bulk-sized media input
- Directly usable sheets as output
- High print quality and mass customisation
- Based on the reliable Colorado M-series
- Compatible with both digital and analogue finishing options

## Analogue printing      Digital printing



## Results



# UVGEL WALLPAPER FACTORY

Designed for maximum  
throughput and operation

As a wallpaper specialist, you know that certain criteria are must-haves: print robustness, colour consistency and dimensional stability. But the basics are not enough. Discerning customers are looking to have it all: stunningly creative prints, exceptional colour depth and detail, luxurious, odourless finishes and a quality that lasts.

## Productivity and uptime

With the UVgel Wallpaper Factory, you too can have it all. A fully digital printing solution that allows mass customisation and endless creative freedom to create unique products. A system with perfectly aligned inline cutting and coreless rewinding modules. With a jumbo roll bulk feed system connected to a machine that almost runs itself, you can confidently leave your UVgel Wallpaper Factory alone overnight.

With its focus on productivity and uptime, the UVgel Wallpaper Factory is designed to get you the best margins on your products by lowering operating costs.

## Level up your throughput

- Volumes above 50,000 m<sup>2</sup> per year
- Designed for maximum throughput and operation
- Based on the same reliable Colorado M-series
- Open interface that is compatible with many finishing options
- Ideal for application specialists



# UVGEL PRINT FACTORY

Quality in quantity

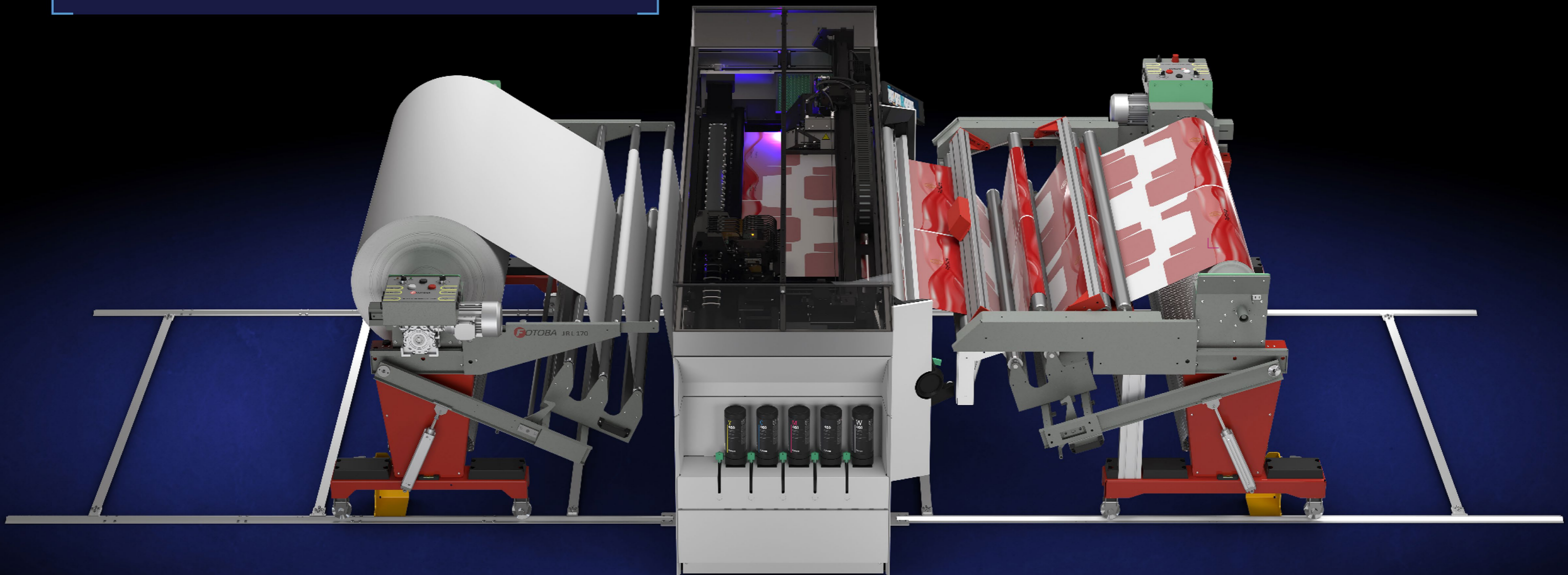
Are you looking for the UVgel advantage in mass volumes? The UVgel Print Factory is here for you. Of course, you get all the advantages of the Colorado M-series and UVgel technology. And with the addition of 400kg bulk-sized media input and output, you can run long jobs all day and all night, without intervention.

This maximum-throughput setup is designed for productivity and uptime, hardly needing to pause for roll changes, service or operator action. That is how we can promise you a brilliant cost of ownership. The UVgel Print Factory is built on the same high-quality Colorado M-series frame, and outfitted with all the upgrades you need to reliably and cost-efficiently print at high speeds and volumes. Do you need more finishing options? The Colorado M-series has an open interface that is compatible with many suppliers' input and output solutions.

## High-quality, high-volume products

Even if you need to print extreme volumes, there's no reason to compromise on print quality. With the UVgel Print Factory, you get the benefit of a digital printing solution that allows mass customisation and spectacular creative capabilities. You'll stand out in the market with unique products, created at high speed, consistent quality and in stunning detail.

With the UVgel Print Factory, you can print on a wide variety of media, allowing you the full breadth and spread of the Colorado M-series application range – only now in bulk.





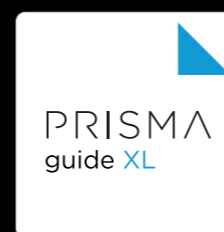
PRISMA  
XL Suite

PRISMA XL Suite is your set of workflow software solutions for Large Format Graphics

- ➔ Create breathtaking output
- ➔ For designers and print service providers
- ➔ Intuitive, easy-to-use with higher flexibility
- ➔ Workflow automation with increased added value

# PRISMA XL SUITE CREATE IMPACT BEYOND IMAGINATION

In Large Format Graphics, we want to deliver unrivalled and inspiring print applications every day. We want to be better, faster and more creative. Every day we are looking for ways to let our applications stand-out. The selected printer tools are designed and tailored to optimize the performance of a diverse range of Canon printers.



## PRISMAguide XL

PRISMAguide XL is a powerful and easy-to-use design and workflow management application to automate and simplify advanced print job preparation, including multi-layered and doublesided print applications on Colorado and Arizona printers so that print files are ready in an instant.



## PRISMAremote Monitoring

PRISMAremote Monitoring is a printer tool to monitor your print operation remotely. The app provides a real-time status of print jobs and tells what action is needed to keep running.



## PRISMAservice

PRISMAservice helps to provide faster, more efficient and more effective customer support by integrating a wide range of Canon service tools in one unified portal. For Canon's Service and Support organisations servicing partners and self-servicing customers.

# SUSTAINABILITY IS IN CANON'S DNA

All our products are built to last, prolonging their lifetime and thereby saving resources. Canon's philosophy of Kyosei – living and working together for the common good – means we are invested in developing and manufacturing products in a sustainable way and delivering services that support customers to reduce their environmental impact.

## What does that mean for your Colorado M-series printer?

- 40% less ink for the same image quality and colour intensity
- Reduced energy usage because of the low-heat, energy-efficient LED curing system
- Instant-on operation reduces standby energy use
- UVgel technology supports environmentally friendly materials such as PVC-free and paper-based media, even uncoated
- Ink, printer and printheads were all developed in concert, for providing maximum synergy and quality
- No dedicated exhaust extraction needed
- Negligible volatile organic compound (VOC) emissions from the UVgel inks

- Below thresholds for UV, visible and IR radiation, and noise emission (ACGIH institute standards and ISO7779/EN27779)
- UVgel inks and printheads produced in brand-new production facility with energy-saving design
- Designed for refurbishment: each Colorado M-series can be refurbished for new customers or its components and materials re-used via our asset recovery plant

We are signatories to the UN Global compact, committed to responsibly meeting our customers' sustainability needs and thus acting as a responsible corporate citizen. Canon is also a partner of WIPO GREEN, an international programme that promotes the coordination of technologies for environmental protection.

## Canon's sustainable DNA

All our products are built to last, prolonging their lifetime and thereby saving resources. Canon's philosophy of Kyosei – living and working together for the common good – means we are invested in developing and manufacturing products in a sustainable way and delivering services that support customers to reduce their environmental impact. Our brand-new UVgel ink and printhead production facility, for instance, has been designed for maximum energy savings by reusing cooling capacity and warming air with a heat exchange unit. The Colorado M-series printers themselves can be refurbished for new customers or its components and materials re-used via our asset recovery plant.



# VOICE OF CUSTOMERS

The printer is very solid and reliable, I can turn it on at night with a full roll and trust that the full roll will be printed in the morning. This is certainly handy if you print white, which is generally a bit slower than CMYK. So that is a very nice added value of this printer.

Richard Meijer  
Production Manager FaberExposize - The Netherlands

After testing the white ink speed modes we concluded the results were outperforming our current printer. My customers will not want to go back to our current quality.

Large Print Service Provider  
Belgium

We are very happy with the maintenance, no need to do manual cleaning at the start of a shift. Regarding the white nozzles, they all work in the morning.

High-production Customer  
The Netherlands



# WARRANTIES AND SERVICE

The Colorado M-series and its high-tech Piezo printheads are built to last. That's why we offer an extensive Warranty and After-Sales Service Program.



## Standard warranty<sup>1</sup>

Canon's Colorado Standard Warranty covers hardware and printheads, for a certain time or usage period.

- Hardware: 2 years or 20.000 m<sup>2</sup>, whichever comes first
- Printheads: 2 years or 20.000 m<sup>2</sup>, whichever comes first

Standard Warranty covers all service parts and printheads. It does not cover key operator maintenance parts, consumables and labor costs.

## Extended warranty<sup>1</sup>

If you're looking for an extended warranty, you can choose for a 3, 4 or 5-year Extended Parts Coverage or Extended Parts and Printheads Coverage.

## Extended Parts Coverage

Extended Warranty covers all service parts without any limitation of the print volume. It does not cover printheads, key operator maintenance parts, consumables and labor costs.

- 3-year Parts Coverage
- 4-year Parts Coverage
- 5-year Parts Coverage

## Extended Parts and Printheads Coverage (optional)

With the Extended Parts and Printheads Coverage, printheads are also fully covered depending on the warranty level based on a maximum print volume on Printheads.

- Prime: 3, 4 or 5 years up to 50.000 sqm
- Plus: 3, 4 or 5 years up to 100.000 sqm
- Pro: 3, 4 or 5 years up to 150.000 sqm

## After-sales service program<sup>2</sup>

At the basis, Canon authorized service engineers are available on time and material basis. On top, we offer the innovative proCARE after-sales service concept, to reduce downtime even more and increase your peace of mind. proCARE includes travel and labor cost, spare parts, preventive maintenance, same business day remote support and second-next or next business day onsite support.

## proCARE

- 3-year full-service contract
- 4-year full-service contract
- 5-year full-service contract

Second next business day onsite support.

## proCARE<sup>+</sup>

- 3-year full-service contract including printheads<sup>2</sup>
- 4-year full-service contract including printheads<sup>2</sup>
- 5-year full-service contract including printheads<sup>2</sup>

Next business day onsite support.

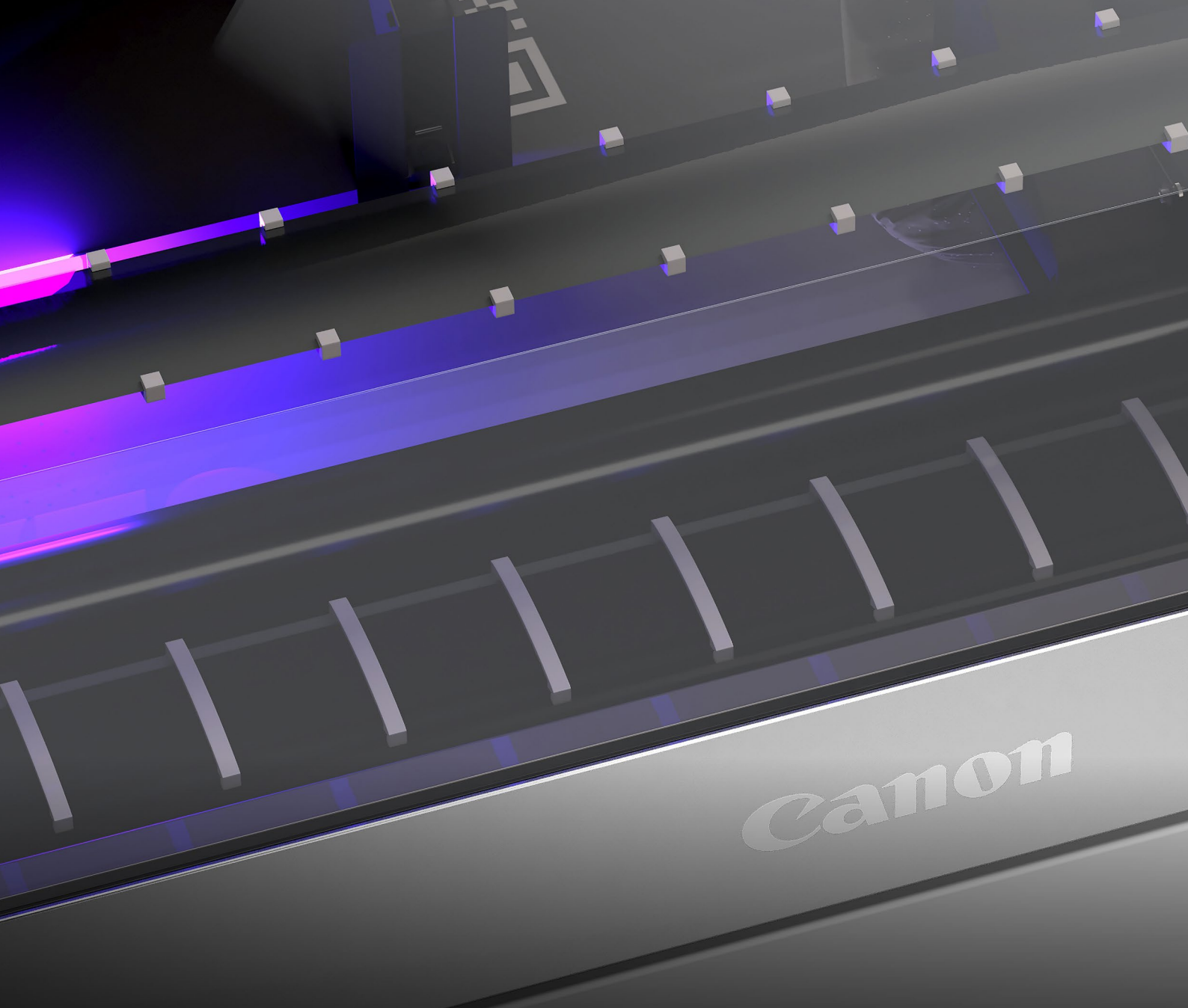
## Hassle-free operation

Colorado proCARE is your choice for hassle-free operation with 100% cost predictability. Clear terms and conditions! No hidden costs! You know exactly what you get. With Colorado proCARE, you maximise uptime, secure your investment and can focus on boosting your business with your Colorado M-series!

<sup>1</sup> There might be regional distinctions in Warranty and Service Packages.

<sup>2</sup> Includes accidental damage coverage, allowed carry over up to two replacements in the next year.





Canon



No part of this publication may be copied, modified, reproduced or transmitted in any form or by any means, electronic, manual, or otherwise, without the prior written permission of Canon Production Printing. Illustrations and printer output images are simulated and do not necessarily apply to products and services offered in each local market. The content of this publication should neither be construed as any representation, guarantee or warranty with regard to specific properties or specifications nor of technical performance or suitability for particular applications. The content of this publication may be subject to changes from time to time without notice. Canon Production Printing shall not be liable for any direct, indirect or consequential damages of any nature, or losses or expenses resulting from the use of the contents of this publication.

© 2024 Canon Production Printing

Canon is a registered trademark of Canon Inc.  
Colorado and PRISMA are registered trademarks of Canon Production Printing Netherlands B.V.

Canon Inc.  
Canon.com

Canon Europe  
Canon-europe.com

English Edition  
© Canon Europa N.V. 2024

Canon Europe Ltd  
4 Roundwood Avenue  
Stockley Park  
Uxbridge  
UB11 1AF

Canon