



# CENTRALLY MANAGE YOUR DIRECT-IP PRINTING. **EASILY.**

**Canon**

**PrinterLogic™**

---

See the bigger picture



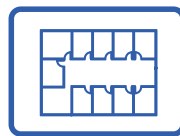
## PRINT DRIVER DEPLOYMENT AND MANAGEMENT SOLUTION

PrinterLogic provides a next-generation, centrally managed direct-IP printing platform that allows organisations to reduce print servers, streamline printing processes and empower their end users.

- > **Centralised management:** Administer all printers from a single web-based console — with or without domains or trusts.
- > **Create printers:** Create new printers and automatically deploy them to end users.
- > **Modify printers:** Modify printer settings (e.g. driver, port, name, duplexing) and have changes instantly made to printers on end-user workstations.
- > **Delete printers:** Remove printers from workstations automatically.



**The admin console** provides IT staff with an interface for defining all the printer objects and assigning drivers, profile settings and deployment options. Settings are configured in profiles and instantly passed down to the endpoint when they are installed. If IT allows users to make changes, these changes are local and will not affect the settings of other users.

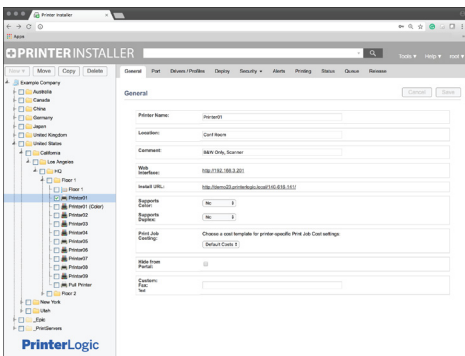


**The self-service portal** is a web-based tool with floorplan maps that enables end users to easily identify and install nearby printers. Based on the deployment profiles from IT, only authorised printers will be displayed to users when they look at the map, even if other printers are in the vicinity.



**The desktop client** is installed on the end-user desktops and acts as the communication liaison between the workstation or virtual client and the admin console. It automatically installs select printers on the user's device and captures usage data that includes user, IP address and operating system.



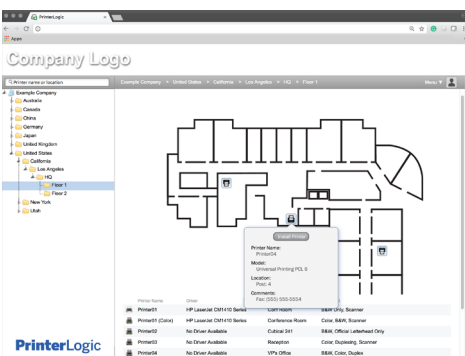


The PrinterLogic Admin Console

## ADMIN CONSOLE

Along with the other powerful print-management features described below, the user-friendly admin console enables IT to add printer drivers and maps that end users can view in PrinterLogic's self-service installation portal.

IT administrators can use this intuitive web-based tool to manage all printers on the current system and configure advanced deployment assignments across the entire organisation from a single pane of glass. It also provides a convenient centralised repository for drivers and profile settings.



The PrinterLogic Self-Service Installation Portal

## SELF-SERVICE INSTALLATION PORTAL

End users can view their physical location and install nearby printers with a single click.

- > **Single enterprise-wide portal:** Provide one consistent printer installation portal across the entire organisation.
- > **Floorplan maps:** Display optional floorplan maps with single-click self-service printer installation.
- > **Open to location:** Enable end users to easily find nearby printers by automatically displaying their current location.
- > **Reduce helpdesk calls:** Empower end users to install printers on their own and reduce support tickets.
- > **Mixed mode:** Display direct-IP printers and Windows shared printers in the same interface.





## FEATURES FOR USER EFFICIENCIES

PrinterLogic provides many useful features to help IT Departments and end-users to be more efficient. From the Admin console to the Self-service portal, PrinterLogic can support organisations minimise print-related help desk calls up to 98%\*, reduce infrastructure costs and streamline driver management and administration.

### Proximity Printing

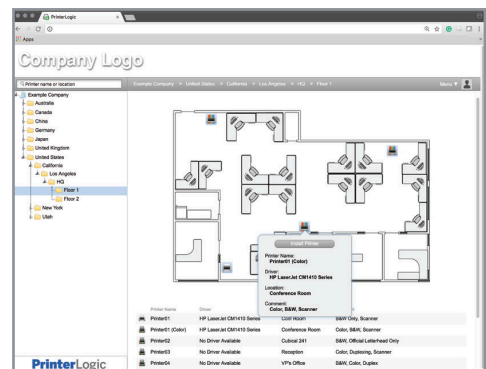
Your employees expect to be able to print anytime and from anywhere, and they expect it to work. Proximity printing makes it simple to ensure that users always see the closest printer to their client device in a session. So printing is seamless, regardless of their location.

With PrinterLogic, enabling Proximity Printing (Citrix speak for location-based printing) is simple. Proximity printing enables users within a specified IP address range to automatically access the network printing devices that exist within that same range. With PrinterLogic, you can easily add printers to a workstation according to its:

- IP Address
- Computer (Host) Name
- Active Directory Computer
- Active Directory Group
- Active Directory Organizational Unit (OU) Membership

### No Need for GPOs or Scripting

Because PrinterLogic does away with restrictive rights management, any authorised IT or support staff can add and remove printer deployment assignments without admin-level access. The elimination of group policy contingencies and custom scripts also allows for faster user log-ons, reliable orphan printer removal and the ability to easily set one-time or recurring default printers. The configuration of printer deployments is simplified as well, yet these can still be carried out on the basis of a wide variety of criteria: Active Directory user, computer, group, container, organisational unit (OU) or even IP ranges and MAC addresses.



The PrinterLogic Self-Service Portal

\* Based on Lamer ISD Case study

# PrinterLogic On-Prem or PrinterCloud? You Decide.

## **Solutions That Fit Your Requirements**

PrinterLogic provides two discrete print-management software solutions to meet the requirements of your environment. One is the original low-footprint on-premise version. The other is a software-as-a-service (SaaS) cloud-based solution. Both are infinitely scalable and offer PrinterLogic's powerful suite of print-management features with ease of use.

## **Reducing Costs and Resources for Proven ROI**

Printing downtime and interruptions set off a cascade of inefficiency that affects end users, help-desk operators and technical support staff. Resources that are directed toward these simple printing problems cannot be assigned to more urgent areas. Print-management companies can handle some of these problems, but if they keep a print-server infrastructure in place they are still subject to the same inefficiencies and risks. According to an independent survey, 77% of PrinterLogic customers cut downtime by 15% as a result of its inherent superiority to traditional print-management solutions.

Through features like its self-service installation portal and centralised admin console, PrinterLogic drastically reduces the number of print-related calls to the service desk while enabling administrators to manage printers more efficiently than ever before. In fact, 83% of PrinterLogic customers reduced time spent on printer management by 30% or more. PrinterLogic also integrates seamlessly with virtual solutions like Citrix and VMware, opening up the same benefits to virtual desktop interface (VDI) environments.

## **Education: Stability and Flexibility for Early Years**

PrinterLogic provides schools with the robust print-management platform they require coupled with the flexibility to support new educational initiatives. Native support for Chromebook printing, effortless driver management and self-service printer installation ensure that students and teachers are consistently able to print where and when they need to. The payback is impressive: 95% of early years schools in the USA who adopted PrinterLogic reported spending far less time managing printers, and 89% reported a substantial reduction in help-desk calls. More than half said they broke even on their investment in 18 months or less.

## **Healthcare: Focus on Patients, Not Printing**

PrinterLogic streamlines printing in dynamic healthcare organisations that rely on electronic medical/health record (EMR, EHR) software solutions and dramatically reduces the time required to manage and deploy printers to medical and administrative staff—especially in challenging VDI environments. Advanced deployment features allow for reliable location-based printer deployments, so mobile staff never have to waste time searching or waiting for printers, improving end-user productivity.

## **Enterprise: A Streamlined Solution for Large-Scale Environments**

With PrinterLogic's enterprise print management solution, thousands of organisations have reduced print servers and gained the ability to manage their entire printer fleet from a single pane of glass—even in globally distributed organisations with fleets numbering in the thousands. PrinterLogic improves printer uptime and reduces help-desk calls by centralizing printer and driver deployment.

## **Scalable: A Print Environment That Grows with Your Organisation**

PrinterLogic scales to accommodate organisations of any size from a single, central server. Our solution can operate an entire printer fleet—even in distributed environments—on minimal infrastructure. If a host server fails, PrinterLogic's direct-IP backbone allows printing to continue without loss of core functionality. Nearly 80% of PrinterLogic customers have reduced their remote server infrastructure by 30% or more while experiencing significant gains in printer management.



**Canon Europe Ltd**

3 The Square,  
Stockley Park,  
Uxbridge,  
Middlesex  
UB11 1ET UK

**Canon**

**PrinterLogic™**

---

See the bigger picture