

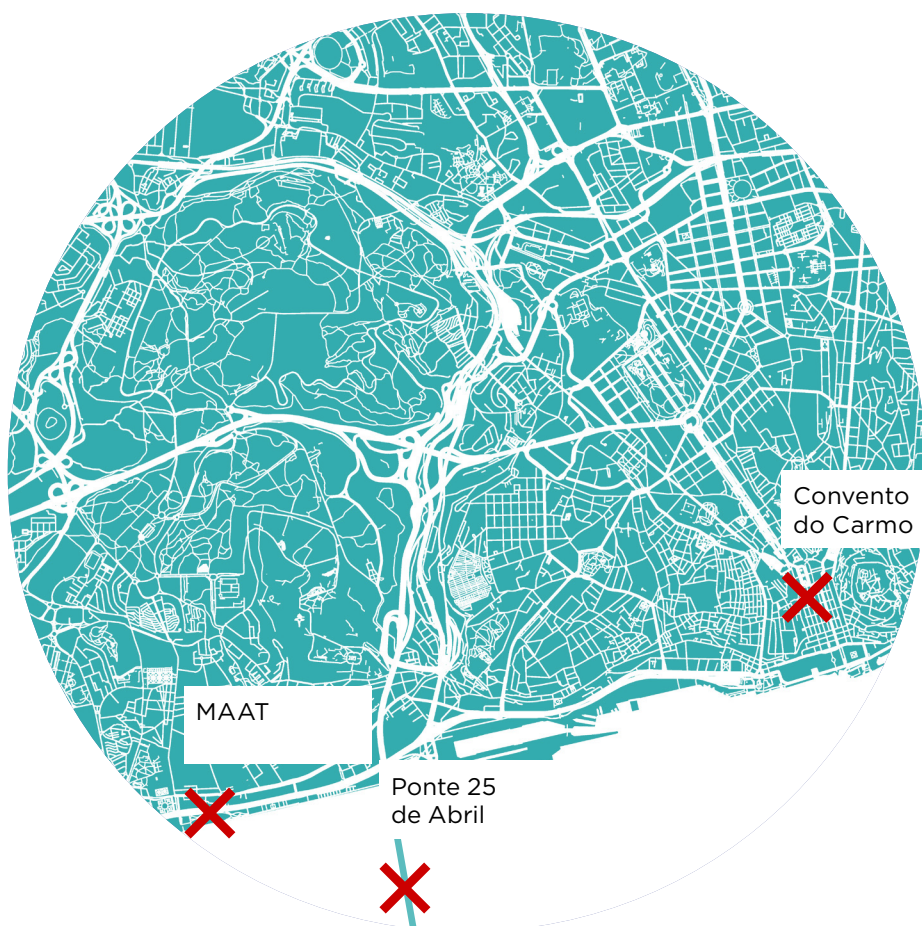
LOST iN

Lisbon

NOISE

Canon and LOST iN create the Hidden Spots Travel Guide

Portugal's capital, Lisbon, is known for its lively nightlife, colourful buildings and friendly atmosphere. LOST iN and Canon have curated a list of unmissable spots to visit on your next trip, to enjoy with a few glasses of local port wine, a Pastéis de Nata and the PowerShot ZOOM.



Explore Lisbon like never before with the **Canon PowerShot ZOOM** - a 12 megapixel camera with image stabilisation and an easy-to-use 3-step zoom. A pocket-sized camera capable of Full HD video and super-zoom, the PowerShot ZOOM is the perfect travel companion to take with you this summer. With 100mm, 400mm and a digitally extended 800mm zoom, this compact camera lets you beat the crowds and discover Europe's hidden spots from new perspectives.

CONVENTO DO CARMO

Historical



Take in the gothic beauty of ancient church ruins

These romantic ruins are all that is left of a once majestic convent following a devastating earthquake in the mid-18th century which entirely destroyed the building's library, resulting in the loss of around 5,000 books.

The buildings and site of the Convento do Carmo were donated in 1864 to the Association of Portuguese Archaeologists, who turned the ruined building into a museum. The Association is still based there, and it's the perfect venue to get a new view of Lisbon since it contains objects with historical, archaeological and artistic value dating back from prehistory to the present. You can explore the weird and wonderful collection of surviving objects housed in the convent's small museum including a selection of tombs which date back as far as Ancient Rome, shrunken heads, mummies, a statue of the Virgin Mary made of vivid green jasper, and Visigoth artifacts.



The outside is just as impressive as the artefacts within. The PowerShot ZOOM's easy point-and-shoot operation means you can see all the details of the Convento Do Carmo's magnificent archways. The Miradouro de São Pedro de Alcântara garden is just a stone's throw away and offers a panoramic view over Lisbon's stunning streets which can be enjoyed through the PowerShot ZOOM's 12-megapixel capability.

Visit the Miradouro de São Pedro de Alcântara garden for a view of the convent from above, as well as exceptional panoramic views of the city.

Canon

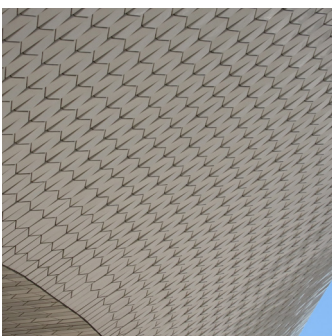


The past and present collide in this repurposed power station

Blending seamlessly into the local landscape by the river Tagus, the Museum of Art, Architecture and Technology (MAAT) covers an area of 38,000 square meters. Originally built in 1908, the central Tejo power station has been integrated with an entirely new complex designed by London-based studio, Amanda Levete Architects. The exterior staircase blends into the water, creating a large, comfortable space to relax and chat. Elements of the original power station are still on display, providing an interesting contrast between old and new.

Both buildings of the MAAT are connected by a landscape project, created by Lebanese architect Vladimir Djurovica. A celebration of art and architecture, but also technology – feel inspired to connect and share your experiences with ease via the Canon Camera Connect app, which allows you to share a live view from your PowerShot ZOOM. The original director of the MAAT, Pedro Gadanho, served previously as the curator of contemporary architecture of the Museum of Modern Art (MoMA) in New York. When the museum first opened, he said no other museum crosses the disciplines of art, architecture and technology in quite the same way, making it the perfect destination to shoot new perspectives with the PowerShot ZOOM.

Stand at the bottom of the stairs in front of the MAAT to get the most impressive view and take in all the details of this building.



PONTE 25 DE ABRIL

Historical



Cross a bridge through time and space

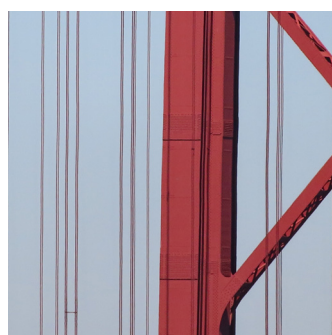
Cross the Ponte 25 de Abril bridge for an alternative view of the MAAT museum with your PowerShot ZOOM, and you'll notice something familiar when you zoom a little closer. This bridge is a companion to the world-famous Golden Gate Bridge in San Francisco. Until 1974 it was named after the former Portuguese Prime Minister, António de Oliveira Salazar before he was overthrown during the Carnation Revolution. The bridge was renamed to mark the date of the collapse of his regime. All of this makes this a site of great political and historical significance for the people of Lisbon.

Lisbon is a city for urban explorers - at just 145g, you'll hardly feel the weight of your PowerShot ZOOM. Settle under the terrace after wandering through Lisbon's cobbled streets to get a good view of the Cristo Rei statue, a Catholic monument and shrine dedicated to the Sacred Heart of Jesus Christ. The history of

this monument is just as global as the bridge next to it - the Cardinal Patriarch of Lisbon was inspired to commission it, following a trip to see the Christ the Redeemer statue of Rio de Janeiro, in Brazil.



For the best view, stand on the terrace under the Cristo Rei statue facing the river. From here you'll have a perfect vantage point of the bridge and river.



Canon