

LOST IN

Antwerp

ANTWERP ANTWERP

VERP ANTWERP

ANTWERP ANTWERP

VERP ANTWERP

ANTWERP ANTWERP

VERP ANTWERP

Canon

Canon and LOST iN create the Hidden Spots Travel Guide

The 'diamond capital' of the world, a diamond in its own right, if you know where to look! Beat the crowds and explore these lesser-known spots with a travel guide specially curated by LOST iN offering new viewpoints of Antwerp with the PowerShot ZOOM.



Explore Antwerp like never before with the **Canon PowerShot ZOOM** - a 12 megapixel camera with image stabilisation and an easy-to-use 3-step zoom. A pocket-sized camera capable of Full HD video and super-zoom, the PowerShot ZOOM is the perfect travel companion to take with you this summer. With 100mm, 400mm and a digitally extended 800mm zoom, this compact camera lets you beat the crowds and discover Europe's hidden spots from new perspectives.

THE MAS

Architecture

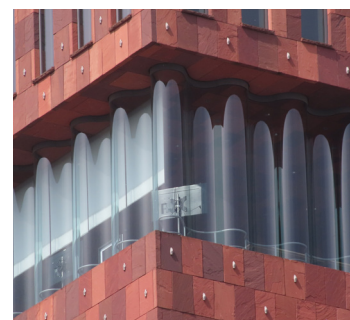
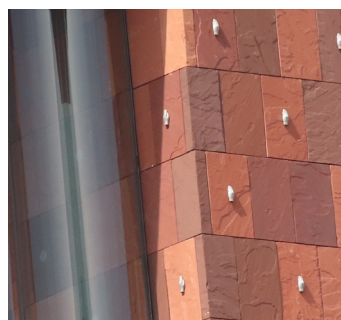


Immerse yourself in the story of Antwerp's past & future

The Museum aan de Stroom (museum by the stream), also known as the MAS, is a 10-storey museum located on the river Scheldt. The project was put in motion in 1998, with the first brick being laid at the Hanzestedenplaats in 2006, and the first member of the public walking through the doors in May 2011. It is the largest museum in Antwerp, holding just under half a million objects in the public galleries and storage across 5-floors of the museum.

The MAS is a striking building, designed by the Dutch architectural firm Neutelings Riedijk and constructed with a mix of red sandstone and curved glass panels that are stepped and staggered as the elevation reaches 60m into the sky. From a distance the glass panels reflect the sky and are themselves reflected in the often-times still water of the port.

The MAS marked the beginning of significant rejuvenation in the area, turning the Hanzestedenplaats into a vibrant and buzzing hub full of coffee spots and artistic pursuits.



With the 100mm, 400mm and digitally extended 800mm focal range of the compact PowerShot ZOOM you can enjoy the MAS itself, but also the city-wide view of Antwerp that you're rewarded with if you climb the 10 floors to the 360-degree rooftop panorama at the top. There is a Michelin-star restaurant on the top floor if you're lucky enough to secure a reservation.

From a floating vantage point on the water, you can take in this impressive building and the contrast of brick against the reflective windows.

Canon

MIDDELHEIM PARK

Historical



30 hectares, 400 exhibits and a century of Belgian history

Middelheim Park hosted its first sculpture exhibition in 1950 to rip-roaring success and popularity. So much so, that the city council opted to make the exhibit a permanent feature and began adding to the collection gradually over the last 70-odd years. If you visit Middelheim Park today, you can enjoy over 400 exhibits, of which 215 are sculptures from world-renowned artists such as Auguste Rodin, Carl Andre and Henry Moore. While that might seem like tiring work, you need only pack the lightweight PowerShot ZOOM to help you spy any of these famous works of art.

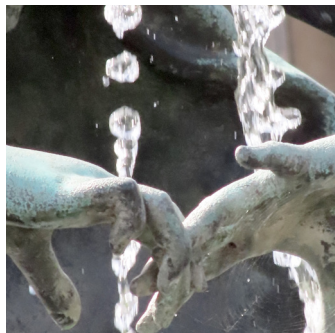
The park itself is split across two distinct areas of interest: Middelheim-Laag (in the northern area of the park) and Middelheim-Hoog (the southern area of the park). Originally biennial exhibitions were held in Middelheim-Laag whilst new additions were installed in Middelheim-Hoog, however, after Antwerp was named Cultural Capital of Europe in 1993 the collection was re-arranged across both areas and the park expanded to the east and west.

On the west, landscape architect Michel Desvigne designed a sleek pattern which was expanded along Beukenlaan and planted with 1,500 ornamental apple trees. The eastern expansion along Lindendreef has an 'artists entrance' designed by Belgian artist Luc Deleu - now home to a number of monumental artworks.

Visitors to Middelheim Park are often struck by the intersection of art and nature, and how they complement each other. Whether you are admiring the sculptures and buildings with the PowerShot ZOOM's 3-step zoom or using it to get up close to a bird sat amongst the apple blossom in the western area of the park, there is something for everyone to take in here.

From the park's grand entrance, you can focus your PowerShot ZOOM on the water fountain framed with greenery and the building behind.

Canon



HAVENHUIS



A government building that could moonlight as a boat

Some might consider this to be one of the most unusual government buildings in the world, or at the very least one of the most redeeming. Built in 2009 and completed in 2016, the Havenhuis (Port House) is unlike any government building you might have seen before. Situated in the port, a stone's throw from the MAS, the building was designed by the late Zaha Hadid and incorporated a disused fire station as the base of the building, above which was erected a 900-tonne steel and glass structure that resembles a huge vessel. The glass structure points toward the river Scheldt in recognition of its importance to the city and its heritage as a major port.

The building's façade is designed to mirror the city's illustrious diamond industry, and if you catch the Havenhuis in golden hour you can use your PowerShot ZOOM to see the glass glowing orange as the sun dips below the horizon. You can even get a closer look at the contrasting old fire station that sits beneath this super structure!

Completed the same year that the designer, Zaha Hadid, passed away, and in memorandum of this and in honour of her, the quayside by the building was named Zaha Hadidplein. Notably, the Havenhuis is the only government building that Zaha Hadid ever designed.



Stand on the opposite bank and look across to the old harbour basin in front of Zaha Hadid's Havenhuis, which is lit up in the evening.

