

BULLETIN 2013

EDITION TWENTY FOUR | EDITOR: SUZY COHEN

CANON
FOUNDATION
IN EUROPE

Canon



RECALLING 2012 ~ OUR CELEBRATORY JUBILEE YEAR

The highlight of 2012 was the 25th anniversary of the Foundation's existence with Professor Hisashi Owada, Judge and former President of the International Court of Justice, the Hague as guest speaker at the Invited lecture in The Hague. He gave attendants his vision for a new framework for co-operation between East Asia and Europe building on over 20 years of successful international relations under the Joint Declaration of 1991.

[Click for more info, photos and a transcript of the lecture](#)

MAIN PHOTO: The Invited lecture, the Hague Academy of International Law, The Hague.

INSET (LEFT TO RIGHT): Rokus van Iperen, Andreas van Agt and Hisashi Owada raising a toast to the Canon Foundation.

INTERACTIVE
CONTENTS PANEL

> FRONTPAGE

> ANNOUNCEMENTS
We welcome to the
Executive Committee
Prof. Dr. Daniela
N. Maennel

The 2013 Annual
Regional Fellow Meeting

> INTRODUCING
Our 2013 Canon Fellows

> PUBLISHED
An Imperial Concubine's
Tale: Scandal, Shipwreck,
and Salvation in
17th-Century Japan

> WE CONGRATULATE
Canon Fellows achieving
awards and promotions

> WHERE ARE THEY NOW?
Accounts from former
Canon Fellows

> ABOUT US
Resources and
application criteria

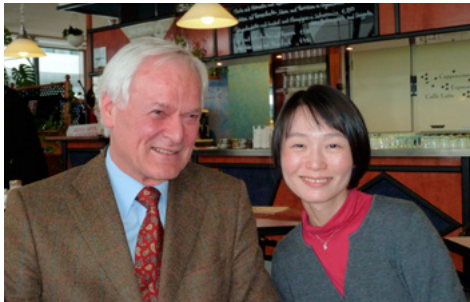




WE WELCOME OUR NEWEST MEMBER TO THE EXECUTIVE COMMITTEE

We welcome our newest member, Prof. Dr. Daniela N. Maennel, to the Executive Committee. Professor of Immunology since 2001, she is Head of the Institute of Immunology at the University of Regensburg. She will also strengthen the Selection Committee with her expertise and knowledge in the Natural Sciences and Medicine when it comes to assessing the applications for grants.

In our visits to Fellows and their host professors during their Research Fellowship period, Dr. Maennel was “inaugurated” into her new role by visiting 2012 Fellow Dr. Motoko Yoshida and host Professor



Dr. Peter Gottwald at the Faculty of Law at the University of Regensburg this March. Dr. Yoshida’s research topic was on the recent legislative development in the EU and Japan regarding international jurisdiction and their influence on civil disputes.

TOP LEFT: Prof. Dr. Daniela N. Maennel.

BELOW RIGHT: Prof. Dr. Peter Gottwald and Dr. Motoko Yoshida.



ANNOUNCING THIS YEAR’S REGIONAL FELLOW MEETING

For Alumni Fellows from Austria, Denmark, Finland, Germany, Hungary, Lithuania, Norway, Poland, Slovak Republic, Sweden, Switzerland plus Fellows who recently completed their Fellowship period. The Fellows who will be invited to the meeting will receive more information later this year.

The meeting will be held in November at the [Center of Oriental Studies at Vilnius University, Vilnius, Lithuania](#). The Center is a major institution of Asian studies in Lithuania as well as an academic core unit of Vilnius University focusing its studies on the regions of Asia and Near East and serves a link among the Lithuanian researchers of the East. The objective of the Centre is to prepare specialists in the field of Asian studies needed for scientific research, the development of cultural and business relations as well as to promote better understanding of the Eastern cultures in Lithuania, and to foster collaboration between East and West.

INTERACTIVE CONTENTS PANEL

> FRONTPAGE

> ANNOUNCEMENTS
We welcome to the Executive Committee Prof. Dr. Daniela N. Maennel

The 2013 Annual Regional Fellow Meeting

> INTRODUCING
Our 2013 Canon Fellows

> PUBLISHED
An Imperial Concubine’s Tale: Scandal, Shipwreck, and Salvation in 17th-Century Japan

> WE CONGRATULATE
Canon Fellows achieving awards and promotions

> WHERE ARE THEY NOW?
Accounts from former Canon Fellows

> ABOUT US
Resources and application criteria

INTRODUCING OUR 2013 CANON FELLOWS

1. DR. RÉGIS GUEGAN

FROM: University of Orleans | TO: Dept. of Earth Sciences, Waseda University | HOST: Prof. Makoto Ogawa | RESEARCH: *Chemistry and Pharmacy: Intercalation of membrane phases made by nonionic surfactants in layered materials for the development of hybrid nonmaterial*

2. DR. DOMENEC ARAN GUIU

FROM: Barcelona University and Peking University | TO: Inst. of Environmental Studies, University of Tokyo | HOST: Prof. Makoto Yokohari | RESEARCH: *Architecture and Area Planning: Application of a spatial concept for strategic planning in the Satoyama landscapes*

3. DR. RUBÉN HERVAS MILLAN

FROM: The Cajal Inst., Consejo Superior de Investigaciones Científicas (CSIC), Madrid | TO: Dept. of Degenerative Neurological Diseases, National Inst. of Neuroscience, Tokyo | HOST: Dr. Yoshitaka Nagai | RESEARCH: *Testing the toxicity of neurotoxic fusion proteins used in single-molecule force spectroscopy*

4. DR. HIROYUKI ISHIMATSU

TO: The European University Inst. as part of the co-sponsored Research Fellowship Programme with the Canon Foundation | RESEARCH: *Other social sciences: Multiculturalism/issues of a multicultural society. Sympathy and Immigration in Europe*

5. DR. MARIA IMMACULADA LAHOZ

FROM: Universidade de Vigo, Spain | TO: Dept. of Molecular Design and Engineering, Nagoya University | HOST: Prof. Eiji Yashima | RESEARCH: *Physics: Enantiopure pyrido-allenoacetylenic foldamers: synthesis and characterisation*

6. DR. JORGE BOSCH MEDA

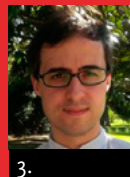
FROM: University in Barcelona | TO: The School of Design, Shizuoka University | HOST: Dr. Satoshi Kose | RESEARCH: *Architecture and Area Planning: Accessibility of Japanese older people's homes from an international perspective: diagnosis, policies and Inclusive Design criteria*



1.



2.



3.



4.



5.



6.



7.



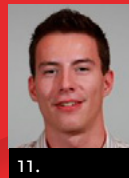
8.



9.



10.



11.



12.



13.



14.

7. DR. RAMUNAS MOTIEKAITIS

FROM: Vilnius University | TO: Inst. for Religion and Culture Studies, Nanzan University, Nagoya | HOST: Prof. James Heisig | RESEARCH: *Japanese-Western interactions in philosophy of the 20th century*

8. DR. YUMI NOTOHARA

FROM: Hiroshima University | TO: Dept. of Philosophy, History, Culture and Arts Studies, University of Helsinki | HOST: Prof. Eero Tarasti | RESEARCH: *Art and Musicology: The Musical Expression and Reception of "Hiroshima" during the Cold War in Europe: Focusing on Aaltonen's second symphony "Hiroshima"*

9. DR. ASAMI OGURO-ANDO

TO: Dept. of Neuroscience and Pharmacology, University Medical Centre, Utrecht, Netherlands | HOST: Prof. Martien J.H. Kas | RESEARCH: *Neurosciences: Cortical functions of cell adhesion molecules related to autism*

10. DR. MAAIKE OKANO-HEIJMANS

FROM: Netherlands Inst. of International Relations 'Clingendael', The Hague, Netherlands | TO: The EU Studies Inst., Keio University, Tokyo and The EU Inst. in Japan, Kansai | HOSTS: Prof. Yuichi Hosoya and Prof. Tosh Minohara | RESEARCH: *Politics and International Relations: Futures for diplomacy: Japan's evolving economic diplomacy and its relevance to Europe*

11. DR. MIKLÓS PALFIA

FROM: Sungkyunkwan University, South Korea | TO: The Dept. of Mathematics, Kyoto University | HOST: Prof. Shin-ichi Ohta | RESEARCH: *Mathematics: geometry of metric spaces*

12. MS. LEA HILDEBRANDT ROSSANDER

FROM: Copenhagen University | TO: The Dept. of Science, Tohoku University | HOST: Prof. Go Yusa | RESEARCH: *Physics: Modeling of an experimental setup for Quantum Energy Teleportation (QET) using Quantum Hall (QH) Edge States*

13. DR. EVA CAROLINA SAÑUDO

FROM: University of Barcelona | TO: The Grad. School of Material Science, Dept. of Science, University of the Hyogo | HOST: Prof. Akira Yamaguchi | RESEARCH: *Chemistry and Pharmacy: Towards new functional magnetic materials*

14. DR. TAKASHI YAMADA

FROM: Tokyo Institute of Technology | TO: Groupement de Recherche en Economie Quantitative d'Aix Marseille (GREQAM), University of Aix-Marseille, France | HOST: Prof. Nobuyuki Hanaki | RESEARCH: *Computer Sciences: "Do-it-yourself lottery" to establish behavioural and cognitive foundations for agent-based models*

INTERACTIVE CONTENTS PANEL

- > FRONTPAGE
- > ANNOUNCEMENTS
We welcome to the Executive Committee
Prof. Dr. Daniela N. Maennel
- The 2013 Annual Regional Fellow Meeting
- > INTRODUCING
Our 2013 Canon Fellows
- > PUBLISHED
An Imperial Concubine's Tale: Scandal, Shipwreck, and Salvation in 17th-Century Japan
- > WE CONGRATULATE
Canon Fellows achieving awards and promotions
- > WHERE ARE THEY NOW?
Accounts from former Canon Fellows
- > ABOUT US
Resources and application criteria

PUBLISHED: AN IMPERIAL CONCUBINE'S TALE, SCANDAL, SHIPWRECK, AND SALVATION IN 17TH-CENTURY JAPAN

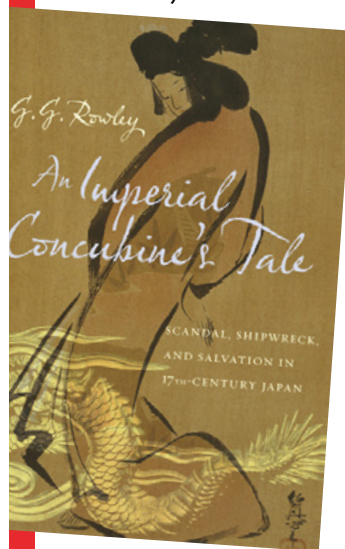
In her recent publication, former Canon Fellow Dr. Gaye Rowley (2000), recounts the remarkable, true story of a resilient woman and her extraordinary life in the war-torn world of 17th-century Japan. For this edition of the Bulletin, Dr. Rowley has kindly provided us with an insight into her motivation for writing this book followed by a stimulating taster of its contents ...

In December 2012, my new book was published by [Columbia University Press](#) in New York. *An Imperial Concubine's Tale* is the culmination of more than a decade of research and writing that began in 2000 when I had the great good fortune to be awarded a Canon Foundation Research Fellowship, which enabled me, through the good offices of Professor Toshio Yokoyama, to spend a year studying at the Institute for Research in Humanities, Kyoto University.

With the Kamo River running north-to-south and mountains rising on the north, east, and west, central Kyoto is easy to navigate on foot and safe at all hours of the day and night. In the early seventeenth century, however, the old capital was a dangerous place. Serial killers stalked the streets after dark, cutting down people at random; while in the imperial palace, at parties hosted by the emperor's principal consort and held in the presence of his mother, noblemen and women mingled freely, pouring saké for one another and enjoying performances by a group of itinerant young women whose abandoned style of dancing would come to be known as kabuki.

Among the noblewomen at these parties was an imperial concubine from the Nakanoin family; her personal name was Nakako. My book tells the story of her extraordinary life.

Nakako was born about 1591 to a middle-ranking nobleman, Nakanoin Michikatsu, and his wife, the daughter of an old provincial warrior family. At the time of Nakako's birth, the family lived in a remote castle facing the Sea of Japan where her father had taken refuge following a forbidden relationship with an imperial concubine. In 1599, after nineteen years in the countryside, he was finally pardoned and recalled



to the capital. Shortly thereafter, in the first month of 1601, Nakako entered service in the imperial palace. There her duties included waiting upon Emperor GoYōzei, grandson of the emperor whose ire had caused her father to flee Kyoto. In due course, she too could expect to be favored with the emperor's intimate attentions.

On the fourth day of the seventh month of 1609, GoYōzei was outraged to discover that a group of his courtiers and concubines had been meeting clandestinely to indulge in illicit sexual escapades. The women had consented to assignments with their male colleagues;

they had gone to view open-air performances of kabuki dancing; they had all enjoyed drinking together at parties that are described as orgies of indiscriminate couplings. The emperor demanded that the guilty courtiers and concubines alike should be "executed, painfully, and before mine own eyes." One name for this incident is the dragon-scale scandal (gekirin jiken). Gekirin, literally "contrariwise scales," refers to the rage of a dragon and by extension a ruler. Eventually, two of the courtiers considered ringleaders were put to death, and the lives of several others were ruined.

CONTINUED ON FOLLOWING PAGE >>

INTERACTIVE CONTENTS PANEL

- > FRONTPAGE
- > ANNOUNCEMENTS
We welcome to the Executive Committee Prof. Dr. Daniela N. Maennel
- The 2013 Annual Regional Fellow Meeting*
- > INTRODUCING
Our 2013 Canon Fellows
- > PUBLISHED
An Imperial Concubine's Tale: Scandal, Shipwreck, and Salvation in 17th-Century Japan
- > WE CONGRATULATE
Canon Fellows achieving awards and promotions
- > WHERE ARE THEY NOW?
Accounts from former Canon Fellows
- > ABOUT US
Resources and application criteria

<< CONTINUED FROM PREVIOUS PAGE

Nakako was caught up in the dragon-scale scandal, but survived it. The savage punishment GoYōzei had called for was unprecedented in court society, and no one was willing to take responsibility for carrying out his orders. The retired shogun Tokugawa Ieyasu was consulted, and he counseled lenience. So it was that in the tenth month of 1609, Nakako was among the group of former imperial concubines banished indefinitely to the tiny island of Niijima off the eastern shore of Japan in the Pacific Ocean. As luck would have it, the boat carrying her into exile was wrecked in a typhoon, and she was blown ashore on the tip of the Izu Peninsula. Rescued and safely out of harm's way, she lived for fourteen years in the deepest countryside, looked after by a village headman and his family. The villagers of Nijō, where Nakako spent her exile, still remember her, and the family who cared for her still has the manuscripts she left behind. Finally, in 1623, she was allowed to return to the capital. Then in 1641 she took vows and began a new career as a Buddhist nun; the Hōji'in Imperial Convent, where she was abbess, is still there on a quiet back street in Kyoto. She was about eighty years old when in 1671 her long and eventful life came to an end.

Nakako is the only woman involved in the dragon-scale scandal whose life can be traced – “documented” perhaps overstates the case – from birth to death. The Canon Foundation Research Fellowship allowed me time to search for materials with which to tell Nakako's story, and, just as important, whole uninterrupted mornings to read what I found. The year in Kyoto also enabled me to develop relationships with people whose experience and knowledge was (and will always be) so much greater than my own: librarians

at Kyoto University Library, where the Nakanoin family archive is housed; nuns at the Hōji'in Imperial Convent; and scholars working in related fields.

The abbess and vice superior of the Hōji'in were most welcoming and shared with me what they could: the temple death register (kakochō) in which Nakako is listed as the fourteenth superior; and the mortuary tablet (ihai) that records her posthumous name. Together we went to the graveyard at the Rozanji, where Nakako's ashes are buried, found her gravestone, and conducted a short memorial service. But my sense of Nakako's life as a religious grew only gradually; it was after conversations with the nuns extending over months that I felt able to imagine Nakako's life in Kyoto following her return from exile. Attending regular readings of the Amida Sutra revealed the convent's present place in the local community and the role the nuns now play in the lives of their believers.

The opportunity to spend an entire year free of teaching and administrative responsibilities is rarely afforded scholars once they have embarked upon their careers. I could never have recovered Nakako's story and pieced together what remains without the generous support of the Canon Foundation in Europe, for which I am most grateful.



Dr. Rowley teaches English and Japanese literature at Waseda University in Tokyo. She has written and/or translated several biographies of Japanese women, including “Yosano Akiko and The Tale of Genji” (Center for Japanese Studies, The University of Michigan, 2000) and Masuda Sayo's “Autobiography of a Geisha” (Columbia University Press, 2003, 2005).

INTERACTIVE CONTENTS PANEL

- > FRONTPAGE
- > ANNOUNCEMENTS
We welcome to the Executive Committee Prof. Dr. Daniela N. Maennel
- The 2013 Annual Regional Fellow Meeting*
- > INTRODUCING
Our 2013 Canon Fellows
- > PUBLISHED
An Imperial Concubine's Tale: Scandal, Shipwreck, and Salvation in 17th-Century Japan
- > WE CONGRATULATE
Canon Fellows achieving awards and promotions
- > WHERE ARE THEY NOW?
Accounts from former Canon Fellows
- > ABOUT US
Resources and application criteria

WE CONGRATULATE CANON FELLOWS ACHIEVING AWARDS AND PROMOTIONS

DR. SEIGO SHIMA Chairman, Canon Foundation Executive Committee. He was awarded in April with a JSPS (Japan Society for the Promotion of Science) Alumni Club Award. This Award is given to people who contributed to developing scientific relationships between German-speaking countries and Japan.



Photographer: Arne Meindl

PHOTO: Prof. Heinrich Menkhaus & Dr. Shima at the award ceremony in Koeln.

DR. KOJI FUJIWARA (1993) moved to the Department of Mathematics at Kyoto University from April 2012 as a Professor.

PROF. MARCO CORBELLA (1996) was Co-Director of AAST International Workshop, exhibition and symposium on “Emergency architecture with Algorithmic Design”, Tokyo.

DR. NATACHA AVELINE (1998) was elected to the National Scientific Research Committee of CNRS (experts who provide advice on and evaluation of research at CNRS) for the mandate 2012-2016.

DR. MINORI KOGURE (1999) was a winner in 2011 of the Prize Essays commemorating the 130th anniversary of Meiji University. In 2012, he also received a Fellowship to do research in USA from 2012-2015 with a Grant-in-Aid for Scientific Research (C) from the Japan Society for the Promotion of Science (JSPS).

DR. ERICA BAFFELLI (2003) was promoted to Senior Lecturer at the University of Otago, New Zealand.

DR. HELI RANTAVUO (2004) was promoted in 2011 to Head of Design Evaluation at Nokia Design in London.

DR. WAKAKO ARAKI (2005) obtained a Humboldt Fellowship for experienced researchers in 2011 in Germany and is now back in Europe.

ASSOC. PROF. ELLEN VAN GOETHEM (2006) was awarded a Japan Society for the Promotion of Science (JSPS) Grant-in-Aid for Young Scientists (A) (Wakate Kenkyu A) (2011-2013).

DR. VALERIO ALBERIZZI (2008) was promoted in 2012 to Associate professor (non-tenured) at the Open Education Center at Waseda University. He was also awarded a 2011-2012 Japan Foundation Japanese Studies Fellowship.

DR. ALEXANDROS GASPARATOS (2008) is at Oxford University since September 2011 at the Biodiversity Institute as a James Martin Research Fellow. From June onwards, he will be working at the same Institute as a Marie Curie Fellow.

DR. GENKI YOSHIKAWA (2008) became a “MANA Independent Scientist” in 2011.

DR. ISABEL JIMÉNEZ ARENAS (2009) obtained a Postgraduate Certificate in Teaching Japanese as a Foreign Language.

DR. OSCAR NAVAJAS (2010) participated in III Seminario Iberoamericano de Investigación en Museología (SIAM) in Madrid, 27-29 october 2011 with a Conference: La museología social como herramienta del cambio en los museos de Japón.

DR. VANESSA FRANGVILLE (2011) was appointed Lecturer in Chinese Studies at the Victoria University of Wellington, New Zealand, July 2012.

DR. WATARU MIZUKAMI (2011) received a Marie Curie Fellowship for research at the University of Bristol for 2 years from 2012.

DR. TOMMI TAPANAINEN (2012) obtained his PhD from the University of Turku, School of Economics, Information Systems Science in December 2012.

INTERACTIVE CONTENTS PANEL

- > FRONTPAGE
- > ANNOUNCEMENTS
We welcome to the Executive Committee Prof. Dr. Daniela N. Maennel
- The 2013 Annual Regional Fellow Meeting*
- > INTRODUCING
Our 2013 Canon Fellows
- > PUBLISHED
An Imperial Concubine’s Tale: Scandal, Shipwreck, and Salvation in 17th-Century Japan
- > WE CONGRATULATE
Canon Fellows achieving awards and promotions
- > WHERE ARE THEY NOW?
Accounts from former Canon Fellows
- > ABOUT US
Resources and application criteria

WHERE ARE THEY NOW? ACCOUNTS FROM FORMER CANON FELLOWS

We are always keen to hear what past Fellows have been doing since they completed their Fellowships. On our website we invite all former Fellows to submit their own personal testimonial. The following testimonials can be read online, just click on their respective links.

DR. GOH KAWAI

Canon Fellow Goh Kawai (2008), who did his Fellowship at the University of Antwerp, Belgium, writes about his work at the Center for Language Learning at Hokkaido University.

"I teach English language at Hokkaido University. Several years ago, the university replaced some teachers with an online learning system, where about 2600 freshmen are taught by 4 professors plus about 10 teaching assistants ..."

[Read his complete text on the Canon Foundation website](#)



MOVIE: Dr. Goh Kawai, Hokkaido University, Designing online learning experiences for audio-visual language learning, 2011.



DR. MARCO CORBELLA

Canon Fellow Marco Corbella (1996) spent his Fellowship period at the Tokyo University of the Arts.

"From January 2011 to January 2013 I had the pleasure of serving as Office Bearer (Honorary Secretary) of the Architects Regional Council Asia (ARCASIA). What follows is a brief summary of the experience I had during my term on that position. ARCASIA is the Council of the Presidents of the National Architectural Institutes of Asia who have membership ..."

[Read his complete text on the Canon Foundation website](#)

ABOVE: Participants of the 33rd Council meeting of ARCASIA.

Fellows wishing to feature on our 'testimonials' webpage are invited to submit a text to foundation@canon-europe.com

INTERACTIVE CONTENTS PANEL

- > FRONTPAGE
- > ANNOUNCEMENTS
We welcome to the Executive Committee
Prof. Dr. Daniela N. Maennel
- The 2013 Annual Regional Fellow Meeting
- > INTRODUCING
Our 2013 Canon Fellows
- > PUBLISHED
An Imperial Concubine's Tale: Scandal, Shipwreck, and Salvation in 17th-Century Japan
- > WE CONGRATULATE
Canon Fellows achieving awards and promotions
- > WHERE ARE THEY NOW?
Accounts from former Canon Fellows
- > ABOUT US
Resources and application criteria

ABOUT US

The objective of the Foundation is the promotion of science, culture, know-how and mutual understanding between Europe and Japan.

The Canon Foundation offers Research Fellowships annually to highly qualified European and Japanese researchers.

Candidates should hold a doctorate or at least a Master's degree. They are eligible during the 10-year period following the successful completion of their PhD or MA degree. Extensions to the 10-year rule are possible in principle in case of exceptional circumstances which should be explained in the application and supporting documents are required. Non-nationals have to have a permanent citizenship in either Europe or Japan.

European Fellowship holders pursue a period of research in Japan whereas Japanese Fellows carry out their research at host institutions in Europe. Fellowships are awarded for a minimum of three months to maximum one year.



[Please click here to download the application form and for details on how to apply](#)

The closing date for applications is **15 September** each year, for Fellowships starting in the following calendar year.

Research Fellows are expected to arrange their own accommodation, visa arrangements etc. [For a whole host of links visit our website](#)

Select the way you would like to search in the Fellow Register

Country
Year
Discipline
University

OUR LIBRARY

To date, our library holds a total of 375 publications: 303 articles and 72 books received by Fellows. These publications contain an acknowledgement to the Canon Foundation for research done during their Fellowship period.

All catalogued publications can be found easily on our website via our online [Fellow Register](#) with the aid of various search parameters.

CANON FOUNDATION IN EUROPE

P. O. Box 2262
1180 EG Amstelveen
the Netherlands

Tel: +31 20 545 8934
Fax: +31 20 712 8934
Email: foundation@canon-europe.com
www.canonfoundation.org

For sending post by courier, please use our visiting address:
Canon Foundation in Europe
Bovenkerkerweg 59
1185 XB Amstelveen
the Netherlands

INTERACTIVE CONTENTS PANEL

- > FRONTPAGE
- > ANNOUNCEMENTS
[We welcome to the Executive Committee Prof. Dr. Daniela N. Maennel](#)
- [The 2013 Annual Regional Fellow Meeting](#)
- > INTRODUCING
[Our 2013 Canon Fellows](#)
- > PUBLISHED
[An Imperial Concubine's Tale: Scandal, Shipwreck, and Salvation in 17th-Century Japan](#)
- > WE CONGRATULATE
[Canon Fellows achieving awards and promotions](#)
- > WHERE ARE THEY NOW?
[Accounts from former Canon Fellows](#)
- > ABOUT US
[Resources and application criteria](#)