

TAKE CONTROL OF YOUR BUSINESS-CRITICAL DOCUMENT PROCESSES

Canon

EXPERIENCE THE POWER AND FLEXIBILITY OF uniFLOW sysHUB

uniFLOW sysHUB can equip your enterprise with a secure, unified and well-managed document input and output processing system. It can help you embrace digital delivery systems, enhance your information and integrate all your critical document processes into one streamlined system with bidirectional communications to monitor, check and validate - improving your competitive edge and shortening customer response times.



“With uniFLOW sysHUB, we have fundamentally restructured and centralized our output management based on SAP. Our specialist departments are thus able to compile the extensive documentation and accompanying documents for the coating systems that we sell much faster. The communication channels in the solution were defined and adapted according to our specific requirements. This solution simplifies the maintenance and adjustments as well as the troubleshooting.”

Sylvio Reh, Head of Integrated Business Services
Von Ardenne

“Flexibility, security and reliability characterise the central printing and document service that we have built with uniFLOW sysHUB. The process standards that we have developed are reliable, powerful and future-proof.”

Rudolf Wolf, DMS Service and Print Output Manager
WWK Lebensversicherung a.G.



CUSTOMERS CHALLENGES IN MANAGING DOCUMENT PROCESSES

Successfully creating and delivering critical documents that support your business processes (e.g. contracts, statements, invoices, airline tickets etc.), is essential for your company.

To deliver the right information, in the right format, at the right place, at the right time is crucial for any business and has to be considered when looking for a solution to automate business processes. Besides classical print and scan management, customers want to orchestrate and automate their business processes while simultaneously gaining detailed process insights. As part of the uniFLOW product family and from a single point of control, sysHUB integrates, automates and manages all processes and applications involved in the customers document process, while providing a detailed process overview. On site, sysHUB is utilized to automate transactional printing, for document process automation, seamless application integration as well as customized process creation and detailed process monitoring.



Authentication



Cost tracking



Print Room Management



Real time process Monitoring



Secure printing



Document scanning



Application Integration



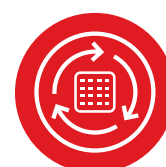
Workflow editor



Mobile Printing



Device Management



Process Automation

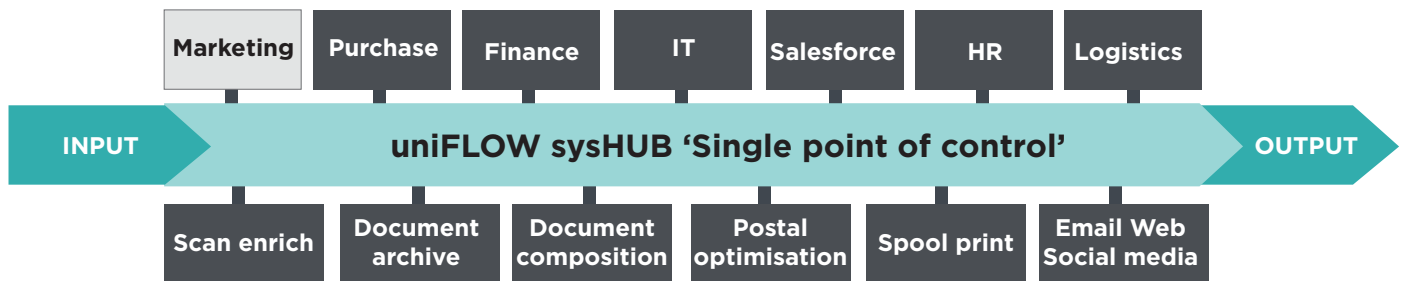


Certified SAP integration



SEAMLESS APPLICATION INTEGRATION

The best way to overcome your information logistics challenges is by automating your document intensive processes with uniFLOW sysHUB. A powerful and flexible solution.



Single point of control

uniFLOW sysHUB gives you an easily integrated single point of control for configuring, monitoring and managing the entire lifecycle of your organisation's businesscritical documents.

Automated workflows

With uniFLOW sysHUB we can design automated systems and workflows that streamline the creation and processing of your electronic or paper documents. As a fit-for-future platform solution, it offers the flexibility to meet both your current and future needs - from automation of simple process steps to orchestration of a complete document process.

A wide range of applications

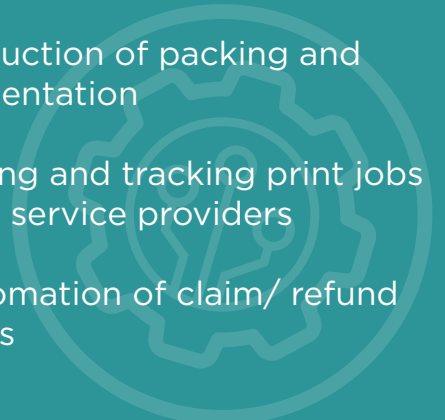
uniFLOW sysHUB is the ideal fit for a wide range of industries. Examples include:

Manufacturing – providing labels of highest quality in a timely manner

Logistics – production of packing and shipping documentation

Banking – sending and tracking print jobs to external print service providers

Insurance – automation of claim/ refund handling process



THE uniFLOW sysHUB ADVANTAGE

uniFLOW sysHUB can help you to manage the complete lifecycle of your business-critical documents. As part of the uniFLOW product family and from a single point of control, uniFLOW sysHUB integrates and automates business processes and applications into one manageable and consistent workflow.



Integrating individual applications in one platform

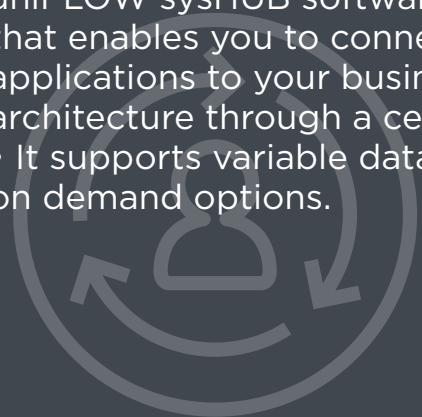
- It integrates seamlessly with your legacy IT systems - so you can protect your existing investments. You won't need to burn resources to replace existing systems or integrate with them or build additional capabilities externally.
- It enables easier configuration management thanks to one central platform for configuration and management of document workflows and integrations.
- It offers a quicker response to changing workflows, processes or business needs thanks to centralised control by one key application, using one language and logic in an easy-to-use interface.
- It is ready to meet your plans for future expansion thanks to the flexible uniFLOW sysHUB software platform that enables you to connect/ disconnect applications to your business architecture through a central platform.
- It supports variable data printing and on demand options.

uniFLOW sysHUB process automation offers reduced costs and increased efficiency

- It effectively saves on labour costs, and thanks to automated error-correction, which reduces the levels of human intervention required, enables you to resolve issues quickly.
- It dramatically increases uptime of your core business processes. A uniFLOW sysHUB streamlined and integrated system reduces the chances of failure and increases the ability to intervene if required.

Automating repetitive processes using configurable workflows

- It ensures fewer failures, removes the threat of human errors and facilitates a quicker response to failures in document delivery, thanks to built in automated fail over mechanisms and process trigger notifications.
- It enables full process visibility with track and trace capability for monitoring and logging process steps.
- It ensures proof of delivery by building a robust document delivery process including bi-directional feedback loops with external applications - all managed by uniFLOW sysHUB.



HOW uniFLOW sysHUB WORKS



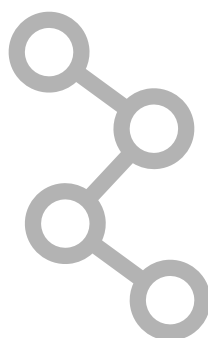
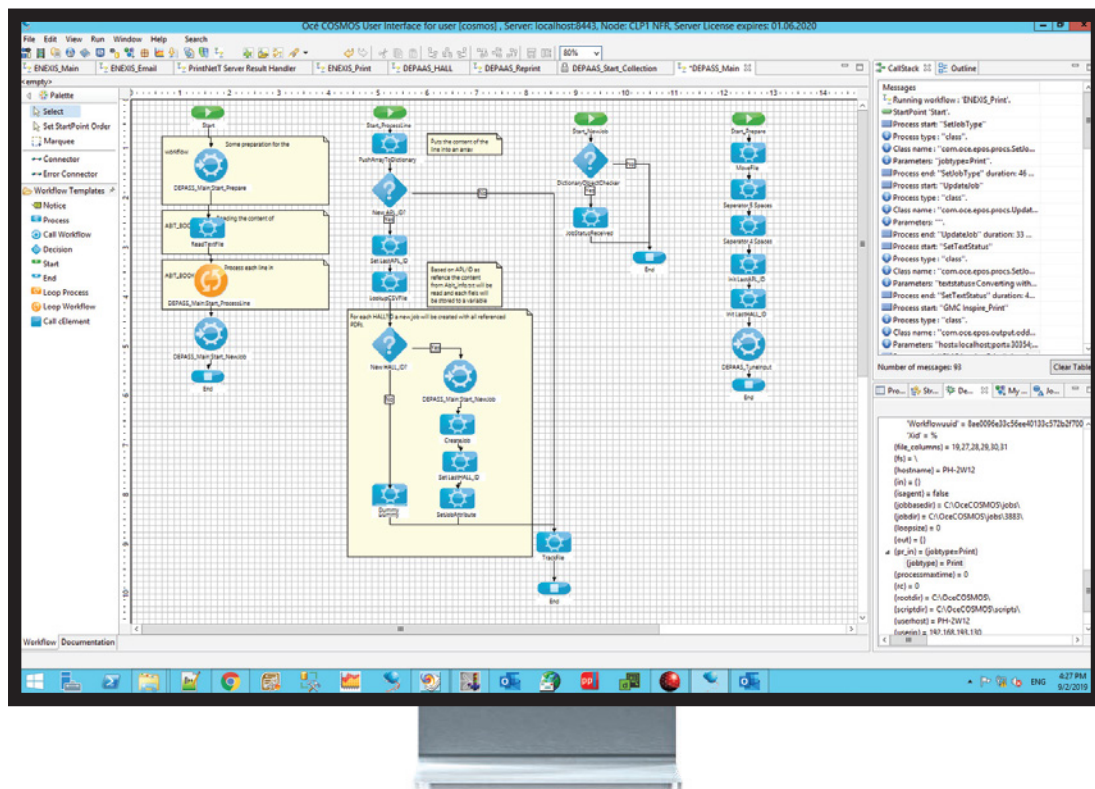
uniFLOW sysHUB solves your information logistics challenges by integrating and managing individual applications in one platform with a single point of control and by automating repetitive processes in configurable workflows. It comprises two major application areas:

Document process platform

- Unmatched performance and scalability
- Central process monitoring
- Track and trace
- Integrating isles of automation

Automation and integration toolbox

- Easy workflow configuration
- Pre-defined connectors
- Based on industry standards
- Economic and efficient customisation



uniFLOW sysHUB HIGHLIGHTS AT A GLANCE

Easy to integrate

uniFLOW sysHUB acts as a standardised central hub for all applications involved in your document management workflow, handling a wide range of inputs and outputs while managing connected applications.

If an application is added or removed, uniFLOW sysHUB can be adapted to suit any new processes, applications or middleware.

Production Printing capabilities

uniFLOW sysHUB allows printer integration to ease printing from various applications. Besides superior print job management, the sysHUB printing adapter provides print job queueing and monitoring, a detailed device overview, device operation capabilities and a powerful PDL converting process. The adapter capabilities perfectly fit the cut sheet and digital presses from the Canon production and commercial printing portfolios like the Canon imagePRESS and varioPRINT series.

Real-time visibility

uniFLOW sysHUB automates every step in your document management workflow, giving you realtime visibility of all job statuses and complete control over every process.

- Automated and on demand reports on every aspect of your document workflows - from historical logs and throughput performance to error rate and costs.
- Automated errorcorrection reduces the need for human intervention, while intelligent resource monitoring ensures optimal use of all available resources.

Maximum compatibility

No matter what platforms your organisation uses or how many different applications it runs, uniFLOW sysHUB talks their language. It is built on the Java programming language, an industry standard that's light on system resources yet flexible enough to communicate with any number of applications - even in the most complex document management workflows.



Robust system architecture

uniFLOW sysHUB offers the scalability and high availability your business needs to ensure resilient business-critical document management processes.

- Multiple uniFLOW sysHUB servers can be linked in a 'grid' to work seamlessly together. This ensures the entire platform remains functional.
- The number of job processors can be enhanced to increase throughput and system performance, as the system load is spread upon the amount of job processors.
- uniFLOW sysHUB can also load balance multiple other applications to ensure high throughput and guarantee uptime should any of these applications fail.

Certified SAP connections

uniFLOW sysHUB integrates seamlessly with your organization's SAP ERP system (cloud or on-premise) to improve your whole document output process. It can accept, analyse and transfer any data output from SAP, convert it into nice looking documents, or receive well prepared documents before being sent for printing, email distribution or archiving - all accurately routed and tracked by uniFLOW sysHUB.

Fully customisable interface

You can quickly create or amend workflows using the intuitive uniFLOW sysHUB interface - an easy-to-use drag-and-drop environment with quick-start shortcuts. Working with your trusted Canon systems integration partner, you can tailor the intuitive user interface to suit any scenarios - all with a consistent design that helps operators complete tasks quickly and easily.



www.syshub.global
www.uniflow.global
www.uniflowonline.com

Canon Inc.
canon.com

SAP Certified
Integration with SAP S/4HANA

SAP® Certified
Integration with Cloud Solutions

Canon Europe
canon-europe.com

English edition
© Canon Europa N.V., 2022

Canon

sysHUB

uniFLOW

uniFLOW
online