



PRISMAprepare

ACCELERATING DOCUMENT
PREPARATION AND PRINTING

Canon

PERFECTING PREPARATION

AT-A-GLANCE

The power of seven make-ready capabilities



Composition

Fast and easy document preparation, including integrated variable data print preparation.



Content

Easily adjust text, images, and more.



Image

Optimise photos or scans.



Colour

Built-in tools give you the control to adjust and change colours as needed.



Layout

Refine layout— including finishing options—and visualise changes in true WYSIWYG.*



Media

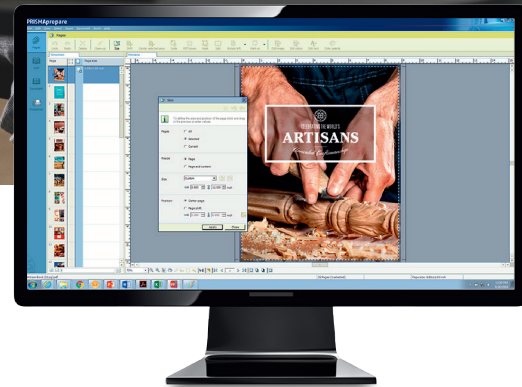
Select media for every page of every job.



Production

Optimise settings for the speed and efficiency of your total production process—every time!

* WYSIWYG stands for What You See Is What You Get.



PRISMAprepare DOCUMENT PREPARATION SOLUTION

Helps accelerate make-ready from composition through production

Reclaim your productivity

In the real world, customer jobs are rarely received in the correct ready to print format, and the extra time and effort needed to get these documents perfect can impact your business considerably. Fortunately, PRISMAprepare can help to significantly improve your productivity.

Effortless document preparation

PRISMAprepare is an easy-to-use, all-in-one document preparation solution that helps you optimise the composition, content, image, colour, layout, media, and production make-ready aspects of every job. It helps streamline your prepress workflow, reduce the time needed to prepare documents, lower your production and labour costs, and minimise waste.

Versatile, powerful tool

With PRISMAprepare, you can collect and clean up pages from digital or hard-copy sources, PDF, or Microsoft® Office* native files. You can enhance documents, assign media attributes, create inserts, and more. Preview—on screen—every step in the preparation process and virtually eliminate the need for hard-copy layout proofing.

Outstanding colour control

PRISMAprepare makes it easy to optimise image colour brightness and saturation. In fact, the integrated colour management capabilities let you replace, change, or modify colours, as well as quickly access PANTONE® MATCHING SYSTEM® and spot colour libraries.

Challenging tasks simplified

Now, tasks such as creating booklets, imposition, creating single- or double-sided tabs, colour splitting, and composing documents for variable data printing (VDP) can be done easily and cost-effectively. And, since the software uses open standards, although it is optimised for production Canon presses, you have the ability to print to any digital press accepting PDF, PCL, and Adobe® PostScript® files, protecting your previous investment.

Superb performance at low cost

With PRISMAprepare, you benefit from simplified job preparation from composition all the way through production. This can help you generate the maximum volume of work with optimal quality, while meeting the toughest deadlines your customers can impose—all while more tightly controlling your operating costs.

IMPROVE YOUR OPERATIONS

WYSIWYG Interface

Reduce errors and decrease proof prints with powerful previews that let you see on screen exactly how the end print product will be printed. Finishing options included!

Advanced colour capabilities

Optimise image colour, brightness and saturation, change colours, create custom spot colours, access standard PANTONE MATCHING SYSTEM, spot colour libraries, and more.

Time savings

Save time and accelerate turnaround by creating and applying templates for jobs that use the same layout and settings.**

Easy to use

Simple user interface helps ensure that even an inexperienced operator can master any document preparation task quickly—and deliver high-quality results every time.

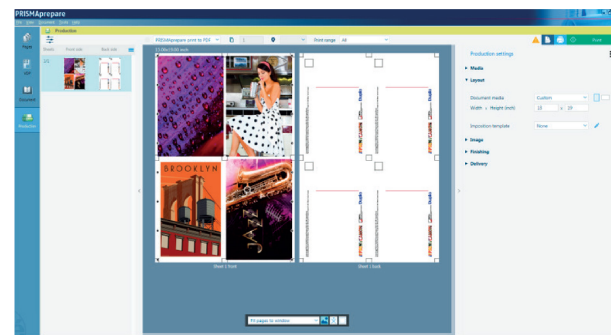
* Microsoft Office suite 2010 or higher is required to be installed on the workstation from which PRISMAprepare is operated.
** Software capabilities described in this brochure relate to PRISMAprepare configured with Automation and Preflight options.

EASY PREPARATION

Powerful make-ready capabilities help you produce great work with ease

Composition make-ready

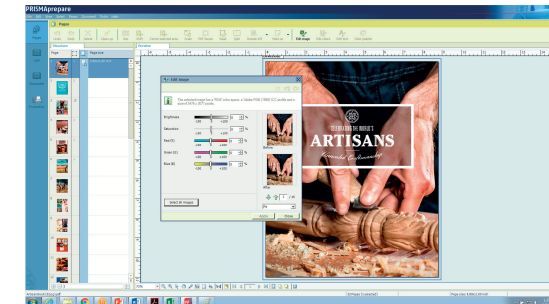
File conversion NOT necessary! Collect and combine PDF and Microsoft Office documents* from a variety of sources into a single document with multiple sections. Save even more time with the ability to correct the document using preflight checks and an advanced subset handling capability that makes navigation through the document fast and easy. In addition, variable data printing (VDP) make-ready is easily performed within PRISMAprepare, further enhancing your productivity and allowing you to offer personalised service to your customers.



* Microsoft Office Suite 2010 or higher is required to be installed on the workstation from which PRISMAprepare is operated.

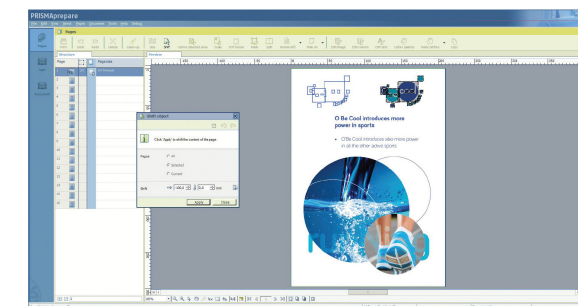
Image make-ready

Get greater control over the quality of every image, with the power to correct imperfections in scanned or digital documents—black and white and colour alike. Align margins and scale content to provide consistent appearance on every page, and remove staple and hole-punch marks or other undesirable artifacts. Deskew and despeckle to restore clarity to imperfectly scanned pages. Use the powerful stack and mirror stack views to process multiple pages instantly.



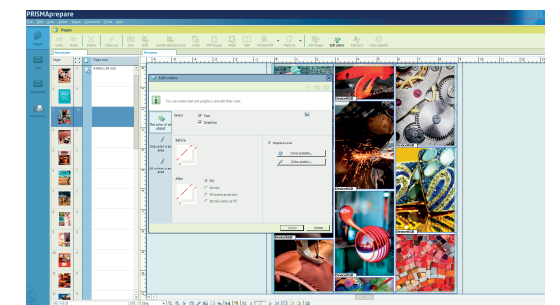
Content make-ready

Reduce the need for costly customer resubmissions. Powerful content editing functions let you quickly and easily make a variety of last-minute adjustments to text, images, object placement, colour, and more. PDF bleed, trim, and crop boxes can be visualised in Page Workspace, where you can modify size and position and define bleed colour.



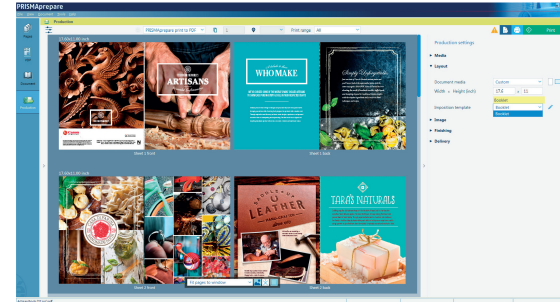
Colour make-ready

The integrated colour management tools in PRISMAprepare software make it easy to delight your customers with high-quality colour. You can quickly modify image colour, brightness, and saturation, and replace or change spot colours with the click of a mouse. Easily create custom spot colours or access standard PANTONE MATCHING SYSTEM and spot colour libraries. And all this can be done without having to send the entire job back to the customer—even at the last minute.



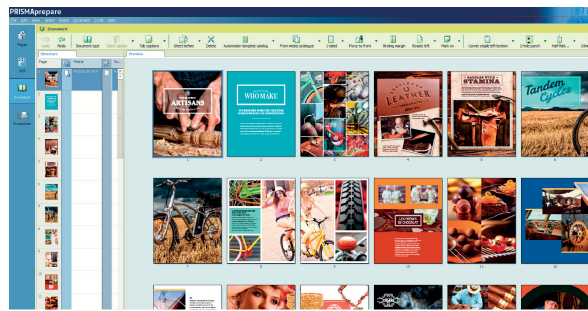
Layout make-ready

Define the final document layout quickly and easily, and see the final preview as you work. Prepare booklets at the touch of a button, with the width of the spine and creep compensation calculated automatically. Create single- or double-sided pre-cut tabs, with up to three lines of text, using section file names, PDF bookmarks, or text files. Print square or rounded full-bleed tabs in black or colour, even making each section a different colour, if desired. Add stamps, watermarks, logos, or signature to pages, and images to tabs or spine. WYSIWYG fold lines help you align image positions, making multi-folded document preparation easy.



Media make-ready

PRISMAprepare gives you total control over selecting the most suitable and cost-effective media type for each job. You can assign specific media to individual pages and sections or complete documents. Media selection is quick and easy from the PRISMAprepare device-independent media catalogue.



Production make-ready

Easily add gutters, margin shifts, colour control and information bars with remarks, file name/date, and more. Use advanced colour marks to automatically detect colour in the whole document or in selected page areas, controlling what prints in colour. For mixed documents, use the automatic colour split capability to print the colour pages on a colour device, then insert and print the remainder of the document using an often faster or more cost-effective black-and-white digital press.

Add barcodes or print marks, or automate the setup of supported nearline finishers* by using the optional Prepare to Finish Connector to Ultimate Bindery software.

With soft proofing capability, there's no more printing out and mailing layout proofs; just send PDF soft proofs right to the client's email inbox for fast, on-screen approvals.

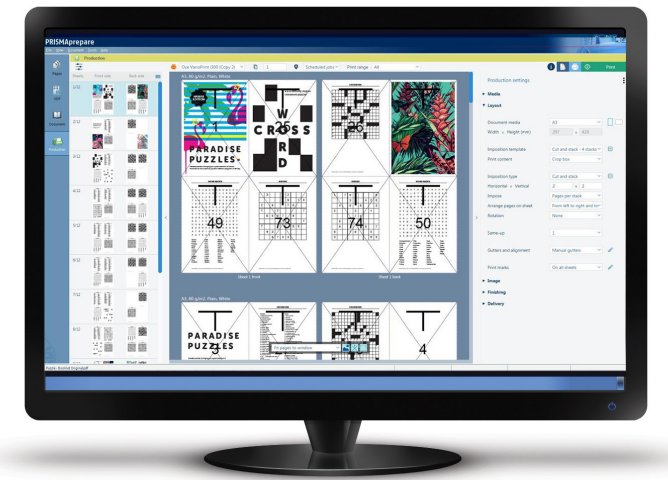
* Ultimate TechnoGraphics maintains the latest finishing devices support list, which is available via this link to Ultimate TechnoGraphics' webpage <http://imposition.com/en-us/Ultimate-Bindery-Supported-Finishing-Devices>. Ultimate Bindery V4 or higher is required subject to third-party service provider's terms and conditions.

SIMPLE, YET POWERFUL

One powerful view

Production Work Space was developed to help enhance operational efficiencies and provide the user with all the tools required to simply create documents from composition to production. Within this one powerful view, you have the ability to:

- Switch between different workspaces without losing your settings
- Access Sheet Preview
- Access production dedicated settings that are present and available on sheet preview
- Measure the imposed file using guidelines without having to print the PDF in the page work space
- Select the imposed page with just one click with the Structure View



PRODUCTION WORK SPACE

WYSIWYG ACCURACY

Help enhance accuracy, reduce waste

With the software's WYSIWYG job preparation capabilities, what you see on the screen is exactly what will print. Help reduce wasted time, effort, or hard-copy layout proofs needed before they are ready.

Details are accounted for

WYSIWYG applies to layout and finishing options as well. You can display the position of staples, hole-punches, and folds, and shift page content to accommodate fold lines and other finishing artifacts on the fly and you can position spine captions or text on tabs as desired.

Oversight at a glance

Using thumbnail view to navigate through the document can make it fast and easy to select, insert, or arrange pages.



MAXIMIZE YOUR INVESTMENT

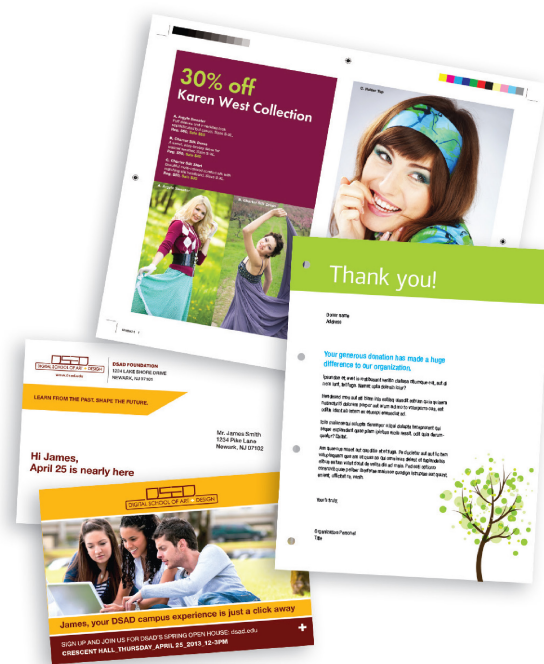
OPEN STANDARDS

Help unleash the full power of your entire fleet

PRISMAprepare make-ready software is virtually device independent, allowing you to prepare documents for production on the varioPRINT DP Line, the varioPRINT 6000 series TITAN, the imagePRESS, imageRUNNER ADVANCE DX series, or other printers accepting PDF, PCL, PS files.

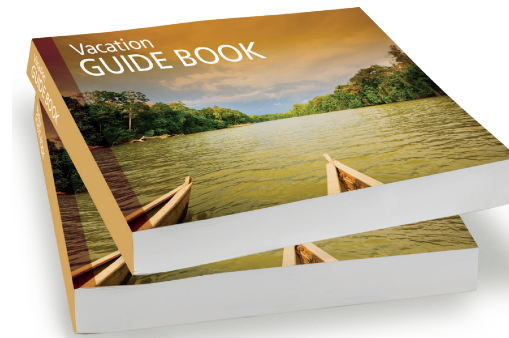
Open interface

Leverage many existing creative tools for detailed content editing. PRISMAprepare supports direct linking of up to 10 different Windows®- based stand-alone PDF applications. You can open a page of your document from PRISMAprepare in Adobe® Photoshop®, Adobe Illustrator®, or another compatible PDF-based editing tool. After making the desired edits, the changes are directly applied to your document in PRISMAprepare.



Integrated workflow

Although PRISMAprepare is a stand-alone solution, it can also be integrated into a broader workflow solution such as PRISMAdirect, which is designed to help streamline the order and production management from job submission to finished product. All PRISMA workflow solutions share a common user interface that's designed for added ease of use and shorter learning curve. Pairing PRISMA workflow solutions with Canon's PRISMAsync family of print servers for digital production presses offers maximum integration and productivity.



AUTOMATED WORKFLOW

Automated make-ready from start to finish

With the optional PRISMAprepare automation capabilities, you can automate your prepress workflow by creating and applying templates for jobs that use the same layout and settings. Templates can be easily exported from, and imported to, other PRISMAprepare systems.

Powerful flexibility

For added flexibility, PRISMAprepare's powerful hot folder functionality and a command-line interface let you automate make-ready and reprint documents without the need to even open PRISMAprepare.

Prepare once, print virtually anywhere

Because PRISMAprepare software is virtually device independent, you can reduce setup time and accelerate turnaround to help improve customer service, all while unleashing the full power of your production operation.



PRISMAprepare V8 SYSTEM REQUIREMENTS

Infrastructure Supported

Operating System:	64-bit OS <ul style="list-style-type: none"> • Microsoft Windows 11 • Microsoft Windows 10* (Professional, Enterprise) 1803 or higher • Microsoft Windows 8/8.1 or Update 1 (Professional, Enterprise)
Windows Components installed automatically:	<ul style="list-style-type: none"> • Microsoft .NET Framework v4.8 • Microsoft Core XML Services (MSXML) 6.0
Native files supported:	Any file format accepted by Microsoft Office can be used. Microsoft Office suite 2013 Microsoft Office suite 2016 Microsoft Office suite 2019
File System:	NTFS >= 40 GB Free Space
Network:	TCP/IP (IPv4 and IPv6), 100/1000 MB/s LPR Protocol enabled, if needed, to drive printer
Other	Latest critical updates from Windows update

Hardware Requirements

Processor:	Performance >= Intel Core i5 An Intel equivalent (like AMD) or VMware Gx server that conforms to this performance demand can also be used. No restrictions concerning 32/64-bit hardware and single/dual core.
Memory:	>= 2 GB (On VMware servers more memory may be required)
Hard Disk:	>= 80 GB (UDMA, SATA / SCSI U320), RPM >= 7.2 K Average Seek <= 10ms, Average Latency <= 5ms
Video:	>= 1280 x 1024, True colors (24/32-bit)
Screen:	19", native monitor resolution 1024 x 768
Scanner:	TWAIN-compatible scanner (for import of paper originals) The Product is tested with the following scanners: <ul style="list-style-type: none"> • Fuji fi-6670 • Canon DR-510C • Kodak i370

* Sideload apps (For developers) must be enabled in Windows 10 version 2004. This is a hidden feature, enabled by default

PRISMAprepare V8 Configurations

Make-Ready Capabilities	Image, Composition, Content, Colour, Layout, Media, Production
Advanced Document Creation	Optional
Advanced Imposition	Optional
Spot Color Editing	Optional
Scanning Clean Up	Optional
VDP	Optional
Automation	Optional
Preflight	Optional
Prepare to Finish*	Optional
Concurrent Users	Up to 99
Supported Number of Printing Systems	Unlimited
Supported Engines (Canon)	Canon sheet-fed digital presses as well as high-end office printing and multifunctional systems supported
Supported Engines (Other)	Output toward any printer using the standard Windows driver technology is supported. Limitations for media selection and finishing support apply

* Prepare to Finish is a connector. Ultimate Bindery V4 Software has to be purchased separately.

Canon and imagePRESS are registered trademarks of Canon Inc. in the United States and may also be registered trademarks or trademarks in other countries. All other referenced product names and marks are trademarks of their respective owners. All printout images and effects are simulated. Neither Canon Inc. nor Canon U.S.A., Inc. represents or warrant any third-party product or feature referenced hereunder. Specifications and availability subject to change without notice. Not responsible for typographical errors.

Canon Inc.
Canon.com

Canon Europe
canon-europe.com

English Edition 0147W156
© Canon Europa N.V., 2023

