

# imageRUNNER ADVANCE 6500 III series

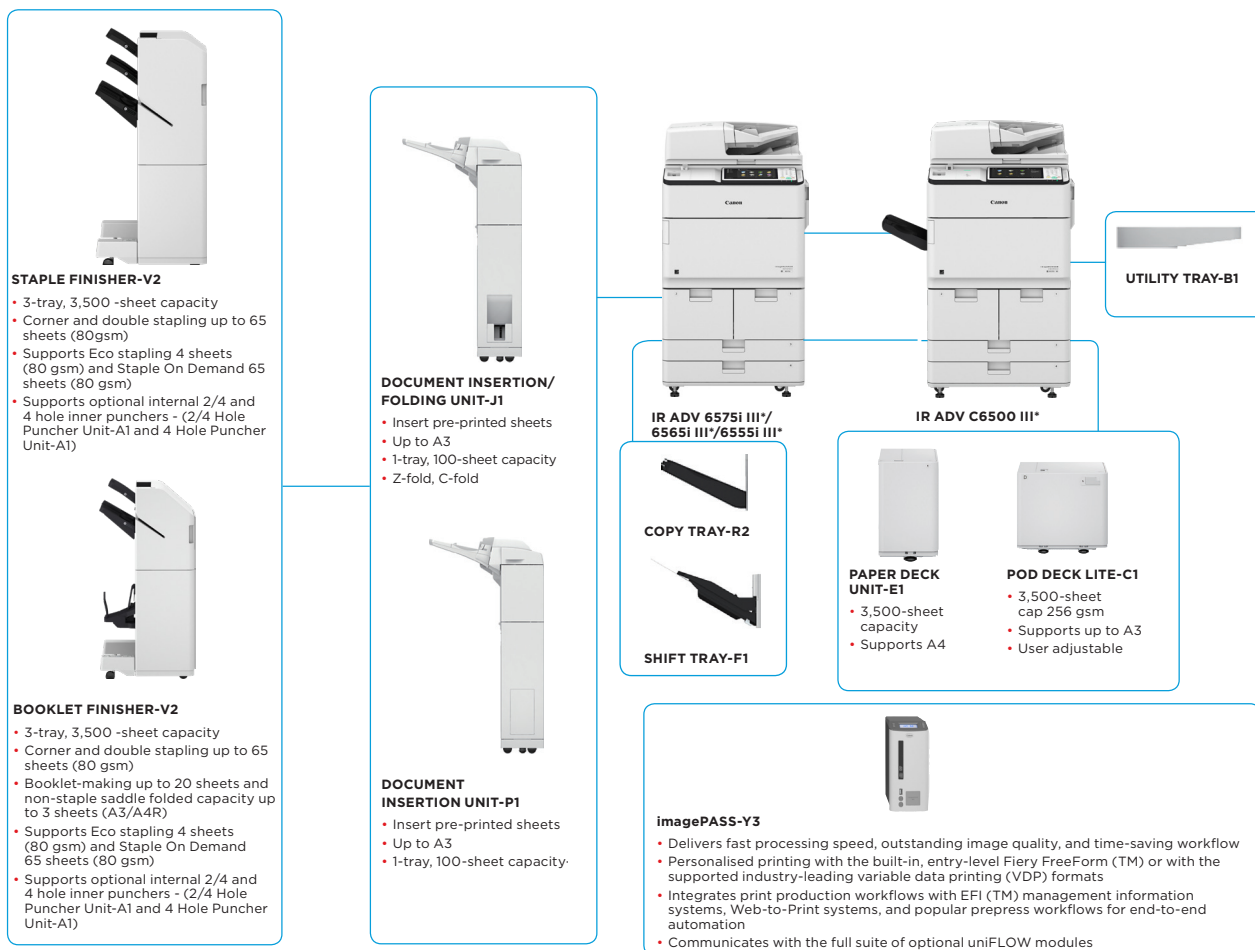
## HIGH QUALITY, EFFICIENT AND DEPENDABLE



Canon uniFLOW Online  
Outstanding Cloud Output Management Solution



### MAIN CONFIGURATION OPTIONS



This flat configuration is for illustration purpose only. For a complete list of options and the exact compatibility relationships, please refer to the online product configurator.

III\* indicates that this model has been upgraded to new system software and includes additional security features as standard.



# TECHNICAL SPECIFICATIONS

# imageRUNNER ADVANCE 6500 III series

<b>MAIN UNIT</b>	A3 Monochrome Laser Multifunctional	<b>Page description languages</b>	Standard: UFR II, PCL 6 Optional: Genuine Adobe PostScript Level 3
<b>Machine type</b>	Print, Copy*, Scan*, Send*, Store and Optional Fax* * Not available on iR-ADV 6555i III PRT model	<b>Direct Print</b>	Direct printing available from USB memory, Advanced space, Remote UI and Web Access* Supported file types: TIFF, JPEG, PDF, EPS, and XPS * Only PDF print from websites is supported
<b>Core functions</b>	Canon Dual Custom Processor (Shared)	<b>Printing from mobile and cloud</b>	AirPrint, Mopria, Google Cloud Print, and Canon PRINT Business, and uniFLOW Online A range of software and MEAP-based solutions are available to provide printing from mobile devices or internet-connected devices and cloud-based services depending on your requirements. Please contact your sales representative for further information
<b>Processor</b>	Standard: 25.6 cm (10.1 inch) TFT LCD WSVG Colour Touch panel Optional: 26.4 cm (10.4 inch) TFT LCD SVGA Colour Upright Touch panel for MFP Model	<b>Fonts</b>	PCL fonts: 93 Roman, 10 Bitmap fonts, 2 OCR fonts, Andalé Mono WTJ/K/S/T*1 (Japanese, Korean, Simplified and Traditional Chinese), Barcode fonts*2 PS fonts: 136 Roman *1 Requires optional PCL International Font Set-A1 *2 Requires optional Barcode Printing Kit-D1
<b>Control Panel</b>	Standard: 3.0GB RAM Maximum: 1TB	<b>Print Features</b>	Suspend Job Timeout, Subset Finishing (PS only), Profile Settings, Secured Print, Watermark, Header/Footer, Page Layout, Two-sided Printing, Collating, Booklet Printing, Grouping, Mixed Paper Sizes/ Orientations, Offsetting, Front/Back Covers, Toner Reduction, Poster Printing, Forced Hold Printing
<b>Memory</b>	Standard: 250GB Maximum: 1TB	<b>Operating System</b>	UFR/II: Windows / 7 / 8.1/10 / Server 2008 / Server 2008 R2 / Server 2012 / Server 2012 R2 / Server 2016, MAC OS X (10.7 or later) PCL: Windows / 7 / 8.1 / 10 / Server 2008 / Server 2008 R2 / Server 2012 / Server 2012 R2 / Server 2016 PS: Windows / 7 / 8.1 / 10 / Server 2008 / Server 2008 R2 / Server 2012 / Server 2012 R2 / Server 2016, MAC OS X (10.7 or later) PPD: MAC OS X (10.7 or later), Windows 7 / 8.1/10
<b>Hard Disk drive</b>	Optional: 250GB, 1TB		McAfee Embedded Control Software
<b>Mirroring Hard Disk Drive</b>	Network		SAP Device Types are available via the SAP Market Place. Please refer to <a href="http://www.canon-europe.com/support/business-product-support">http://www.canon-europe.com/support/business-product-support</a> for availability of print solutions for other operating systems and environments including AS/400, UNIX, Linux and Citrix. Some of these solutions are chargeable.
<b>Interface Connection</b>	Standard: 1000Base-T/100Base-TX/10Base-T, Wireless LAN (IEEE 802.11 b/g/n) Optional: NFC, Bluetooth Low Energy OTHERS Standard: USB 2.0 (Host) x2, USB 3.0 (Host) x1; USB 2.0 (Device) x1 Optional: Serial Interface, Copy Control Interface		
<b>Paper Supply Capacity (A4, 80gsm)</b>	Standard: 4,200 sheets 1,500-sheet cassette x 2, 550-sheet cassette x 2, 100-sheet Multi-purpose tray Maximum: 7,700 sheets (with POD Deck Lite-C1 or Paper Deck Unit-E1)	<b>COPY SPECIFICATIONS<sup>1</sup></b>	
<b>Paper output capacity (A4, 80gsm)</b>	250 Sheets (with Copy Tray-R2) Maximum: 3,500 Sheets (with Staple Finisher-V2 or Booklet Finisher-V2)	<b>Copy Speed</b>	iR-ADV 6575i III: 75 ppm (A4), 37 ppm (A3), 54 ppm (A4R), 35 ppm (A5R) iR-ADV 6565i III: 65 ppm (A4), 32 ppm (A3), 47 ppm (A4R), 35 ppm (A5R) iR-ADV 6555i III: 55 ppm (A4), 32 ppm (A3), 40 ppm (A4R), 35 ppm (A5R)
<b>Finishing capabilities</b>	Standard: Collate, Group With External finisher: Collate, Group, Offset, Staple, Saddle Stitch*1, Hole Punch*2, Staple-Free Staple*3, Staple on Demand*3, Document Insertion*4, Fold (C-, Z- folding*3) *1 Requires Booklet Finisher-V2 *2 Requires 2/4 Hole Puncher Unit-A1 or 4 Hole Puncher Unit-A1 (with Staple Finisher-V2 or Booklet Finisher-V2) *3 Requires Staple Finisher-V2 or Booklet Finisher-V2 *4 Requires Document Insertion Unit-P1 or Document Insertion/Folding Unit-J1 (with Staple Finisher-V2 or Booklet Finisher-V2) *5 Requires Document Insertion/Folding Unit-J1 (with Staple Finisher-V2 or Booklet Finisher-V2)	<b>First-Copy-Out Time (A4)</b>	iR-ADV 6575i III: Approx. 3.1 seconds or less iR-ADV 6565i III: Approx. 3.3 seconds or less iR-ADV 6555i III: Approx. 3.3 seconds or less
<b>Supported media types</b>	Upper Left/Right Decks (1/2): Thin, Plain, Recycled, Colour, Thick, Pre-punched, Letterhead, Bond Lower Cassettes (3/4): Thin, Plain, Recycled, Colour, Thick, Pre-punched, Letterhead, Bond, Tab* * Requires Tab Feeding attachment Kit-B1 Multi-purpose tray: Thin, Plain, Recycled, Colour, Thick, Pre-punched, Bond, Transparency, Labels, Letterhead, Tab, Tracing* * Some types of tracing paper cannot be used	<b>Copy resolution (dpi)</b>	Reading: 600 x 600 Printing: 1,200 x 1,200 Up to 9,999 copies Automatic or Manual (9 Levels)
<b>Supported media sizes</b>	Upper Left/Right Decks (1/2): Standard size: A4, B5 Lower Cassettes (3/4): Standard size: A3, A4, A4R, A5R, B4, B5, B5R Custom size: 139.7 mm x 182 mm to 297 mm x 487.7 mm Multi-purpose tray: Standard size: A3, A4, A4R, A5, A5R, A6R, B4, B5, B5R Custom size: 100.0 x 148.0 mm to 297.0 x 487.7 mm Free size: 100.0 x 182.0 mm to 297 x 487.7 mm	<b>Multiple Copies</b>	25% - 400% (1% Increments)
<b>Supported media weights</b>	Paper Decks / Paper Cassettes: 52 to 220 gsm Multi-purpose tray: 52 to 256 gsm Duplex: 52 to 220 gsm	<b>Copy Density</b>	25%, 50%, 70%
<b>Warm-up Time</b>	From Power On: 30 Seconds or Less* *Time from device power-on, until copy ready (no print reservation) From Sleep Mode: 30 Seconds or Less Quick Start-up Mode: 4 Seconds or less* * Time from device power-on to when key operations can be performed on the touch panel display.	<b>Magnification</b>	141%, 200%, 400%
<b>Dimensions (W x D x H)</b>	Standard (MFP model): 670 x 779 x 1,220 mm With optional Upright Touch Panel: 1,481 x 770 x 1,252 mm iR-ADV 6555i III Printer model: 670 x 779 x 1,052 mm	<b>Preset Reductions</b>	141%, 200%, 400%
<b>Installation Space(W x D)</b>	Basic: 1,533 x 1,353 mm (With Multi-purpose tray/upper-right cover open + Front cover open + Copy Tray) Fully configured: 2,436 x 1,353 mm (with POD Deck Lite-C1 + Document Insertion / Folding Unit-J1 + Booklet Finisher-V2 or Staple Finisher-V2 + Main unit Front cover open)	<b>Preset Enlargements</b>	Preset R/E Ratios by Area, Paper Setting, Previous Setting, Favourite Setting, Finishing, Two-Sided, Density Adjustment, Original Type Selection, Interrupt Mode, Setting Confirmation/Cancel
<b>Weight</b>	iR-ADV 6575i III/6565i III/iR-ADV 6555i III: Approx. 234 kg*1, Approx. 238 kg*2 iR-ADV 6555i III PRT: Approx. 204 kg*3 *1 Including ADF, Flat Touch Panel and the toner bottle. *2 Including ADF, optional Upright touch panel and the toner bottle. *3 Including Flat panel, printer cover and the toner bottle.	<b>Basic Copy Features</b>	Book to Two Pages, Two-sided Original, Finishing, Booklet, Job Build, N on 1, Add Cover, Insert Sheets, Different Size Originals, Density Adjustment, Original Type Selection, Transparency Cover Sheets, Page Numbering, Copy Set Numbering, Sharpness, Erase Frame, Secure Watermark, Print Date, Shift, Gutter, Print & Check, Negative/Positive, Repeat Images, Merge Job Blocks, Job Done Notice, Mirror Image, Print on Tab, Store in Mail Box, Superimpose Image, Cascade Copy, Copy ID Card, Skip Blank Pages, Detect Feeder Multi Sheet Feed, Free Size Original
<b>PRINT SPECIFICATIONS</b>	Including the toner bottle.	<b>Special Copy Features</b>	
<b>Print Speed</b>	iR-ADV 6575i III: 75 ppm (A4), 37 ppm (A3), 54 ppm (A4R), 35 ppm (A5R) iR-ADV 6565i III: 65 ppm (A4), 32 ppm (A3), 47 ppm (A4R), 35 ppm (A5R) iR-ADV 6555i III PRT: 55 ppm (A4), 32 ppm (A3), 40 ppm (A4R), 35 ppm (A5R)	<b>SCAN SPECIFICATIONS</b>	Colour flatbed scan unit plus 300-sheet duplex automatic document feeder* (1-Pass duplex Colour scan) [2-sided to 2-sided (Automatic with DADF)] * Detect Feeder Multi Sheet Feed is supported.
<b>Print Resolution (dpi)</b>	1,200 x 1,200, 600 x 600	<b>Type</b>	300 Sheets
		<b>Document Feeder Paper Capacity (80 gsm)</b>	Platen: Sheet, Book, 3-Dimensional Objects (Height: Up to 50 mm, Weight: up to 2kg) Document Feeder Media weight: 1-sided scanning: 38 to 220 gsm (BW), 64 to 220 gsm (CL) 2-sided scanning: 50 to 220 gsm (BW), 64 to 220 gsm (CL) Platen: max. scanning size: 297.0 x 431.8 mm Document Feeder media size: A3, A4, A4R, A5, A5R, B4, B5, B5R, B6R, Custom size: 128.0 x 139.7 mm to 304.8 x 431.8 mm



# TECHNICAL SPECIFICATIONS

# imageRUNNER ADVANCE 6500 III series

<b>Scan Speed (ipm: BW/CL; A4)</b>	1-sided Scanning: 120 /120 (300 dpi), 120 (BW: 600 dpi) 2-sided Scanning: 240 /220 (300 dpi), 150 (BW: 600 dpi)	<b>Data</b>	Standard: Trusted Platform Module (TPM), Hard Disk Password Lock, Hard Disk Drive Erase, Mail Box Password Protection, Hard Disk Drive Encryption (FIPS140-2 Validated), Common Criteria Certification (DIN ISO 15408) Optional: Hard Disk Drive Mirroring, Hard Disk Drive removal, Data Loss Prevention (Requires uniFLOW)
<b>Scan Resolution (dpi)</b>	600 x 600, 400 x 400, 300 x 300, 200 x 400, 200 x 200, 200 x 100i, 150 x 150, 100 x 100	<b>Network</b>	Standard: IP/Mac Address Filtering, IPSEC, TLS Encrypted Communication, SNMP V3.0, IEEE 802.1X, IPv6, SMTP Authentication, POP Authentication before SMTP, S/MIME
<b>Pull Scan Specifications</b>	Colour Network ScanGear2. For both TWAIN and WIA Supported OS: Windows 7/8.1/10 Windows Server 2008/Server 2008 R2/Server 2012/Server 2012 R2/Server 2016	<b>Document</b>	Standard: Secure Print, Adobe LiveCycle® Rights Management ES2.5 Integration, Encrypted PDF, Encrypted Secure Print, Device signature, Secure Watermarks Optional: User signature, Document Scan lock
<b>Scan Method</b>	Send functionality available on all models Scan to USB Memory Key: Available on all models Scan to Mobile Devices and cloud-based services: A range of solutions is available to provide scanning to mobile devices or cloud-based services depending on your requirements. Please contact your sales representative for further information. TWAIN/WIA Pull scanning available on all models	<b>ENVIRONMENTAL SPECIFICATIONS</b>	
<b>SEND SPECIFICATIONS</b>		<b>Operating Environment</b>	Temperature: 10 to 30 °C Humidity: 20 to 80 % RH (Relative Humidity) 220-240V(±10%), 50/60Hz (±2 Hz), 10Amp CEE 7/7 (230V)
<b>Destination</b>	E-Mail/Internet FAX (SMTP), SMB v3.0, FTP, WebDAV, Mail Box, Super G3 Fax (Optional), IP Fax (Optional)	<b>Power source</b>	Maximum: Approx. 2,400 W Printing: Approx. 1,397.9 W*1 Standby: Approx. 260.4 W*1 Sleep mode: Approx. 0.9 W*2 Plugin Off: Approx. 0.3 W*3
<b>Address Book</b>	LDAP (2,000)/Local (1,600)/Speed dial (200)	<b>Plug (Main Unit)</b>	*1 Reference value: measured one unit *2 0.9W sleep mode may not be possible in all circumstances due to certain settings. *3 Reference value, Quick startup mode OFF
<b>Send resolution (dpi)</b>	600 x 600, 400 x 400, 300 x 300, 200 x 400, 200 x 200, 200 x 100, 150 x 150, 100 x 100	<b>Power consumption</b>	Sound Power Level (LwAd) Active: 75 dB or Less*1 Standby: 53 dB *2
<b>Communication protocol</b>	File: FTP (TCP/IP), SMB v3.0, WebDAV E-mail/I-Fax: SMTP, POP3	<b>Noise levels</b>	Sound Pressure (LpAm) (Reference) Bystander's position: Active: iR-ADV 6575i III: 58 dB*2, iR-ADV 6565i III: 56 dB*2, iR-ADV 6555i III/6555i III PRT: 54 dB*2 Standby: 36 dB or Less*2
<b>File Format</b>	Standard: TIFF, JPEG, PDF (Compact, Searchable, Apply Policy, Optimise for Web, PDF A/1-b, Encrypted), XPS (Compact, Searchable), Office Open XML (PowerPoint, Word), PDF/XPS (Device Signature) Optional: PDF (Trace&Smooth), PDF/XPS (User Signature)	<b>Standards</b>	*1 DE-UZ205 (2017) compliant (Data taken from Blue Angel Standard value) *2 Reference value: measured with ISO7779, described with ISO9296 (1988)
<b>Universal Send Features</b>	Original Type Selection, Two-sided Original, Book to Two Pages, Different-size Originals, Density Adjustment, Sharpness, Copy Ratio, Erase Frame, Job Build, Sender's Name (TTI), Delayed Send, Preview, Job Done Notice, File Name, Subject/Message, Reply-to, E-mail Priority, TX Report, Original Content Orientation, Skip Blank Pages, Detect Feeder Multi Sheet Feed	<b>CONSUMABLES</b>	Blue Angel
<b>FAX SPECIFICATIONS</b>		<b>Toner Cartridge/s</b>	C-EXV 36 TONER BK
<b>Optional / Standard</b>	Optional on all models	<b>Toner (Estimated Yield @ 6% Coverage)</b>	56,000 pages
<b>Maximum Number of Connection Lines</b>	2	<b>SOFTWARE AND PRINTER MANAGEMENT</b>	
<b>Modem Speed</b>	Super G3: 33.6 kbps G3: 14.4 kbps	<b>Tracking and reporting</b>	Universal Login Manager* (ULM): Manage your costs easily by using the embedded reporting capability to identify and control costs on a user-based level by device. *Installation, activation & registration required uniFLOW Online Express: Combining with ULM you can gain further control and highlight expenditures per users/department and pinpoint where costs can be scaled down from a central cloud based location.
<b>Compression Method</b>	MH, MR, MMR, JBIG	<b>Remote management tools</b>	iW Management Console: Server-based software for centralised management of a fleet of devices (includes monitoring or consumables, status monitoring and alerts, distribution of address books, configuration settings, firmware and MEAP applications, meter capture and reporting, driver and resource management) eMaintenance: Compatible with eMaintenance services via embedded RDS (Enables meter capture, automatic consumables management, remote diagnostics and reporting for service providers to offer efficient, fast and proactive maintenance) Content Delivery System: Allows the Remote distribution of firmware, iR options and MEAP applications; Remote User Interface (RUI) Web based interface to each device that helps to provide remote device management and control
<b>Resolution (dpi)</b>	400 x 400, 200 x 400, 200 x 200, 200 x 100	<b>Scanning software</b>	Network ScanGear: TWAIN-compliant scanner driver that enables computers on a network to use the pull scan functionality of the device
<b>Sending/Recording Size</b>	A3, A4, A4R, A5*1, A5R*1, B4, B5*2, B5R*1 *1 Sent as A4 *2 Sent as B4	<b>FIERY PRINT CONTROLLER SPECIFICATIONS</b>	
<b>FAX memory</b>	Up to 30,000 pages	<b>Optional/Standard</b>	Optional on all models
<b>Speed dials</b>	Max. 200	<b>Name</b>	imagePASS-Y3 (External)
<b>Group dials/destinations</b>	Max. 199 dials	<b>Print Resolution (dpi)</b>	1200 x 1200, 600 x 600
<b>Sequential broadcast</b>	Max. 256 addresses	<b>Standard Page Description Language(s)</b>	PCL6, Adobe PostScript 3
<b>Memory backup</b>	Yes	<b>Memory</b>	8GB (2 x4GB)
<b>Fax Features</b>	Original Type Selection, Two-sided Original, Book to Two Pages, Different-size Originals, Density (for Scanning), Sharpness, Copy Ratio, Erase Frame, Job Build, Sender's Name (TTI), Selecting the Telephone Line, Direct Send, Delayed Send, Preview, Job Done Notice, TX Report, Detect Feeder Multi Sheet Feed		
<b>STORE SPECIFICATIONS</b>			
<b>Mail Box (Number supported)</b>	100 User Inboxes, 1 Memory RX Inbox, 50 Confidential Fax Inboxes 30,000 Maximum Pages Stored		
<b>Advanced Space</b>	Communication Protocol: SMB or WebDAV Supported Client PC: Windows (Windows 7/8.1/10) Concurrent Connections (Max.): SMB: 64, WebDAV: 3 (Active Sessions)		
<b>Advanced Space available disc space</b>	Approx. 16GB (Standard HDD) Approx. 480GB (with option 1TB HDD)		
<b>Advanced Space Features</b>	Authentication for Advanced space Log-in, Sort Function, Printing a PDF File with a Password, imageWARE Secure Audit Manager Support		
<b>Memory Media</b>	Standard: USB Memory		
<b>SECURITY SPECIFICATIONS</b>			
<b>Authentication</b>	Standard: Universal Login Manager (Device and Function Level Log-in), uniFLOW Online Express*, User Authentication, Department ID Authentication, Access Management System Optional: My Print Anywhere secure print (Requires uniFLOW) * No charge for this solution; however activation is required.		

# TECHNICAL SPECIFICATIONS

# imageRUNNER ADVANCE 6500 III series

<p><b>Hard Disk Drive</b></p> <p><b>Processor Speed</b></p> <p><b>System</b></p> <p><b>Fonts</b></p> <p><b>Supported Operating Systems</b></p> <p><b>Interface</b></p> <p><b>Network protocols</b></p> <p><b>Direct Print</b></p> <p><b>VDP</b></p> <p><b>Standard Features</b></p> <p><b>Fiery Print Controller Options</b></p> <p><b>HW Platform</b></p> <p><b>Base OS</b></p> <p><b>Power source</b></p> <p><b>Maximum Power consumption</b></p> <p><b>Dimensions (W x D x H)</b></p> <p><b>Weight</b></p> <p><b>PAPER SUPPLY OPTIONS</b></p> <p><b>PAPER DECK UNIT-E1</b></p> <p><b>POD DECK LITE-C1</b></p> <p><b>OUTPUT OPTIONS</b></p> <p><b>COPY TRAY-R2</b></p> <p><b>SHIFT TRAY-F1</b></p>	<p>500 GB SATA</p> <p>Intel Pentium G4400 (3.3 GHz)</p> <p>Fiery FS350Pro</p> <p>PS: 138 Fonts PCL: 113 Fonts</p> <p>Windows 7 32 and 64 bit / Windows 8.1 32 and 64 bit / Windows 10 32 and 64 bit / Windows Server 2012 64bit only / Windows Server 2012 R2 64bit only / Windows Server 2w016 64 bit only, MAC OS</p> <p>2 x Ethernet (1000Base-T/100Base-TX/10Base-T), USB 3.0 x 2 (rear), x 3 (front on Fiery Quick Touch TM), USB 2.0 x 4 (rear)</p> <p>TCP/IP (FTP, SMTP, POP, HTTP, SNMP, LDAP, SLP, SMB, LPD, IPP, WS-Discovery, Bonjour, Direct Mobile Printing, Port9100, SNTTP, 802.1X, DHCP, DNS, NTP)</p> <p>PDF1.7, EPS, TIFF6, JDF1.4/JMF(OP)</p> <p>FreeForm v1, v2.1, PPML, PDF/VT-1, PDF/VT-2, Creo VPS</p> <p>Fiery Command WorkStation6 / Paper Catalog Fiery Remote Scan / Fiery Hot Folders &amp; Virtual Printers / Fiery JDF</p> <p>Fiery Impose / Fiery Compose / Fiery Impose and Compose / Removable HDD kit</p> <p>NX One</p> <p>Windows 10 IoT Enterprise 2016 LTSB</p> <p>AC100-240V, 50Hz/60Hz, 3.0A (100V) - 1.5A (240V)</p> <p>53 W</p> <p>203 x 248 x 384 mm</p> <p>Server unit only: 5.9 kg</p> <p>Paper Capacity: 3,500 sheets (80 gsm) Paper Type: Thin, Plain, Recycled, Colour, Thick, Pre-punched, Letterhead, Bond Paper Size: A4, B5 Paper Weight: 52 to 256 gsm Power Source: From the Main Unit Dimensions (W x D x H): 340 x 630 x 572 mm Weight: Approx. 34 kg</p> <p>Paper Capacity: 3,500 sheets (80 gsm) Paper Type: Thin, Plain Recycled, Colour, Thick, Pre-punched, Letterhead, Bond, Tab, Transparency, Labels Paper Size: A3, A4, A4R, A5R, B4, B5, B5R, and Custom Size (139.7 x 182 mm to 297 x 487.7 mm) Paper Weight: 52 to 256 gsm Power Supply: 220-240V, 50/60Hz, 1.2A Dimensions (W x D x H): 633 x 686 x 574 mm Weight: Approx. 68 kg</p> <p>Provides a simple tray for basic output needs. Capacity: 250/100 sheets (1-sided/2-sided, 80 gsm)</p> <p>Capacity (80 gsm): 250sheets (Straight delivery) / 500 sheets (Shift)</p>	<p><b>STAPLE FINISHER-V2 (External)</b></p> <p><b>BOOKLET FINISHER-V2 (External)</b></p> <p><b>2/4 HOLE PUNCHER UNIT-A1</b></p> <p><b>DOCUMENT INSERTION UNIT-P1</b></p> <p><b>DOCUMENT INSERTION / FOLDING UNIT-J1</b></p> <p><b>OTHER OPTIONS</b></p> <p><b>STAPLE CARTRIDGE</b></p>	<p>Number of Trays: 3 Upper Tray Capacity*: A4, A5, A5R, A6R, B5: 250 sheets, A3, A4R, B4, B5R: 125 sheets Middle Tray Capacity*: A4, A5, A5R, A6R, B5: 250 sheets, A3, A4R, B4, B5R: 125 sheets Lower Tray Capacity*: A4, A5R, B5: 3,000 sheets, A3, A4R, A5, B4, B5R 1,500 sheets, A6R: 250 sheets (52 to 105 gsm), 50 sheets (105 gsm to 256 gsm) *with 81.4 gsm paper</p> <p>Paper Weight: 52 to 256 gsm Staple Position: Corner, Double Staple Capacity: Corner and Double Stapling: A4, B5: 65 sheets (90 gsm) A3, A4R, B4: 30 sheets (90 gsm) Eco Staple: A3, A4: 5 sheets (52 to 64 gsm) 4 sheets (65 to 81.4 gsm) 3 sheets (81.5 to 105 gsm) Staple On Demand: 65 sheets (90 gsm) Dimensions (W x D x H): 656 x 623 x 1,195 mm (when the extension tray and rotary tray are extended) Weight: Approx. 35 kg (Includes the above STAPLE FINISHER-V2 basic staple specifications.) Saddle Stitch paper size: A3, A4R, B4, Custom Size (195 x 270 mm to 297 x 431.8 mm) Saddle Stitch Staple Capacity: 20 sheets x 10 sets (52 to 81.4 gsm) (including 1 cover sheet up to 256 gsm) Non-staple saddle folded capacity up to 3 sheets (52 to 105 gsm) Dimensions (W x D x H): 656 x 623 x 1,195 mm (when the extension tray and rotary tray are extended) Weight: Approx. 58 kg</p> <p>(Requires either the STAPLE FINISHER-V2 or BOOKLET FINISHER-V2) Two or Four Holes Acceptable Punch Paper Weight: 52 to 256 gsm Acceptable Punch Paper Size: Two holes: A3, A4, A4R, A5, B4, B5, B5R; Four holes: A3, A4 Power Source: From the main unit</p> <p>(Requires either the STAPLE FINISHER-V2 or BOOKLET FINISHER-V2) Number of insertion trays: 1 Tray Insertion Tray Capacity: 100 sheets (80 gsm) Acceptable Insertion Paper Type: Thin, Plain, Recycled, Colour, Thick, Letterhead, Bond, Coated, Tab Acceptable Insertion Paper Size: A3, A4, A4R, B4, B5, B5R Acceptable Insertion Paper Weight: 60 to 256 gsm Power Source: 100-240V, 50/60Hz, 1.0 Amp Dimensions (W x D x H): 247 x 679 x 1,242mm (width excluding document tray) Weight: Approx. 40kg</p> <p>(Requires either the STAPLE FINISHER-V2 or BOOKLET FINISHER-V2) Number of insertion trays: 1 Tray Insertion Capacity: 100 sheets (80 gsm) Acceptable Insertion Paper Type: Thin, Plain, Recycled, Colour, Thick, Letterhead, Bond, Coated, Tab Supported Folding Type: C-Fold, Z-Fold Acceptable Insertion Paper Size: A3, A4, A4R, B4, B5, B5R Acceptable Insertion Paper Weight: 60 to 256 gsm Acceptable Folding Paper Size: C-Fold: A4R, Z-Fold: A3, A4R, B4 Acceptable Folding Paper Weight: C-Fold / Z-Fold: 60 to 105 gsm Folding Paper Output Capacity: C-Fold: sheets (80 gsm), Z-Fold: 30 sheets (80 gsm) Power Source: 100-240V, 50/60Hz, 1.0 A Dimensions (W x D x H): 247 x 679 x 1,242mm (width excluding document tray) Weight: Approx. 76kg</p> <p>STAPLE CARTRIDGE-X1 (for stapling 5000 pcs x 3) (for Staple Finisher-V2 and Booklet Finisher-V2) STAPLE CARTRIDGE-Y1 (for saddle stitching 2000 pcs x 2) (for Booklet Finisher-V2)</p>
--	--	--	---

For a complete list of all Hardware accessories, please refer to our website specifications page or online product configurator.

## Software & Solutions



## Certifications and compatibility



**Canon Ireland**  
3006 Lake Drive  
Citywest, Saggart  
Co. Dublin, Ireland  
Telephone No: 01 2052400  
2052400  
Facsimile No: 01 2052525  
canon.ie

**Canon (UK) Ltd**  
Woodhatch  
Reigate  
Surrey RH2 8BF  
Telephone No: 01737 220000  
220000  
Facsimile No: 01737 220022  
canon.co.uk

**Canon Inc.**  
canon.com  
**Canon Europe**  
canon-europe.com  
English edition  
© Canon Europa N.V., 2019