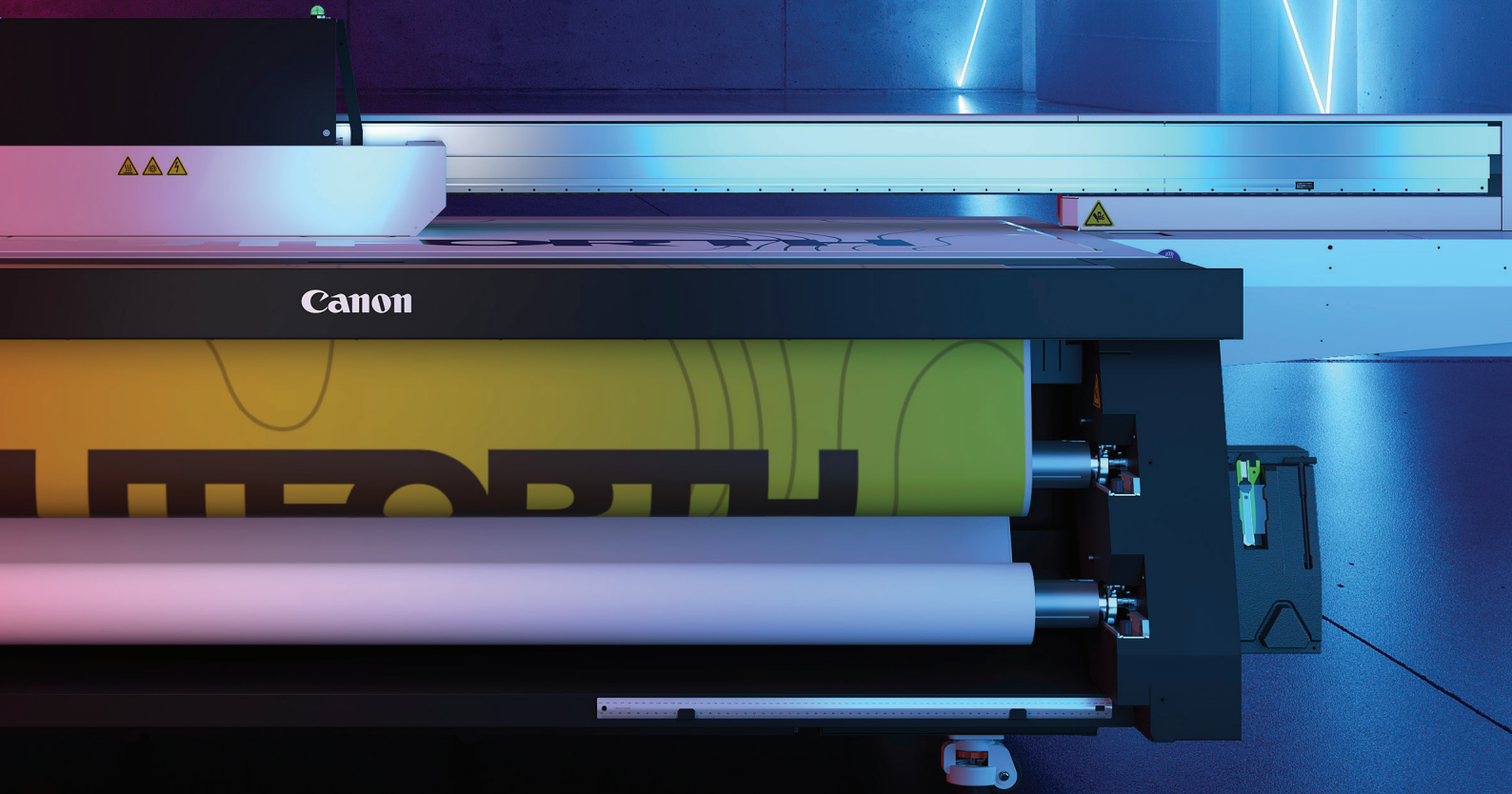


TRUE FLATBED PRINTERS FOR TRUE PROFESSIONALS

Meet the Arizona family



Canon

EXCEPTIONAL PRINT QUALITY ON RIGID AND FLEXIBLE MEDIA

Take your Large Format Graphics capabilities to the next level with the Arizona series. These UV curable true flatbed printers allow you to produce flawless photo-realistic prints on virtually any media imaginable. With a completely renewed range of models to choose from, the Arizona series offer fantastic opportunities to boost your Large Format Graphics revenue.

World-renowned

Ever since its inception, the Arizona has been widely acclaimed. The original Arizona 250 GT was honored with the DPI Vision Award, given to the digital imaging product development most likely to have a profound and positive effect on the industry. Since then, the series has gone from strength to strength, collecting more than 35 industry awards for its exceptional print quality, versatility and productivity. The Arizona series are truly the Best Selling Flatbed printers in the market in the last decade, with more than 8,000 units installed worldwide.

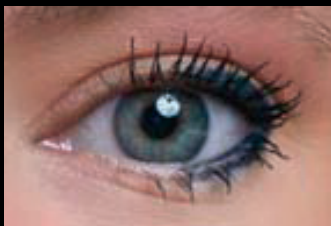
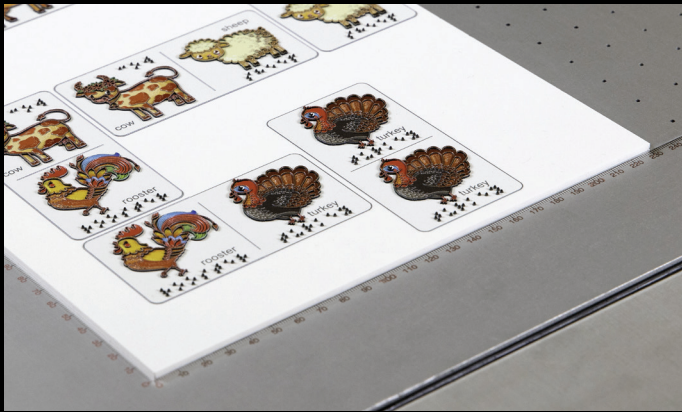
VariaDot imaging technology

With their outstanding image quality, Arizona series printers give you the ability to offer premium printing services. The photo-realistic print quality is due to VariaDot imaging technology. It uses variable-sized droplets and delivers finer details and smoother gradients in highlight areas, as well as crisp colours in the mid-tones and incredible density in shadows and solid colour areas. Images look far superior to those printed on a conventional, fixed-droplet, 6-colour inkjet printer, while consuming up to 50 percent less ink.

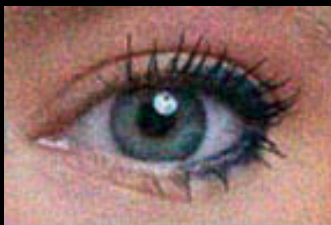
4-colour/6-colour VariaDot

4-colour VariaDot imaging technology gives you photo-realistic print quality perfect for interior décor and sign- & display applications, while enjoying excellent ink economy. For even higher quality photo and fine art applications optional Light Cyan and Light Magenta inks are available in the Arizona 1300, 2300 and 6100 Mark II printers.





Variable Dot Printing



Fixed Dot Printing

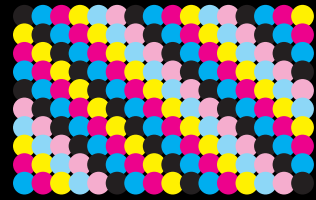
Less is more

VariaDot imaging technology enables a printhead to produce droplets in different sizes instead of a typical single large droplet. It means images always appear less grainy than those printed on a 6-colour, fixed dot printer - regardless of the resolution. Varying the droplet size to as little as 6 picolitres also produces sharper images with smoother gradients and quarter tones.

Conversely, the ability to create bigger droplets produces dense, solid colours. The net result is photo-realistic print quality with sharpness usually expected at resolutions of 1.440 dpi or higher.

Every Arizona printer can print perfectly registered, 4-colour text lines with 6-point font size and models equipped with High Definition print mode can even produce perfect text lines with 2-point font size all day long.

In addition, the Arizona 135 GT, 1300, 2300 and 6100 Mark II series printers offer Active Pixel Placement Compensation.



Fixed 6-colour printing



4-colour VariaDot Imaging Technology



6-colour VariaDot Imaging Technology

The flatbed table is mapped to determine system flatness and actively adjusts pixel placement to guarantee uniform, extra-sharp printing over the entire flatbed table.

On the Roll Media Option (RMO) the mapping is done dynamically, during printing. This is to compensate for heating up of the platen by the UV lamps and to guarantee optimum print quality on the RMO.

Reduce ink costs by up to 50 percent

Because VariaDot imaging technology can jet exactly the right size droplet, it uses up to 50 percent less ink than fixed-droplet, 6-colour printers. For every square meter of printing this equates to less than 8 ml/m² (or 0.74 ml/ft²) of ink using 4-colour VariaDot imaging technology or less than 10 ml/m² (or 0.93 ml/ft²) of ink using 6-colour VariaDot imaging technology - cost savings that really count in today's business climate.



PRODUCE STUNNING POINT-OF-SALES MATERIALS, WALL PANELS FOR INTERIOR DÉCOR, BACKLIT IMAGES, BANNERS, EXHIBITION GRAPHICS, DISPLAY & PACKAGING MATERIALS, INDUSTRIAL APPLICATIONS AND MORE.



PRECISION PRINTING WITHOUT COMPROMISE

An array of powerful features and innovative technology ensures that the Arizona series is the ideal true flatbed printer for a huge diversity of rigid and flexible media applications.

VariaDot imaging technology

- True greyscale: 6-30 picolitre droplets for every possible image element
- Exceptional photo-realistic print quality
- Finer details, smoother gradients plus dense and uniform, solid colours
- Active pixel placement compensation to guarantee uniform, razor-sharp printing

Roll Media Option

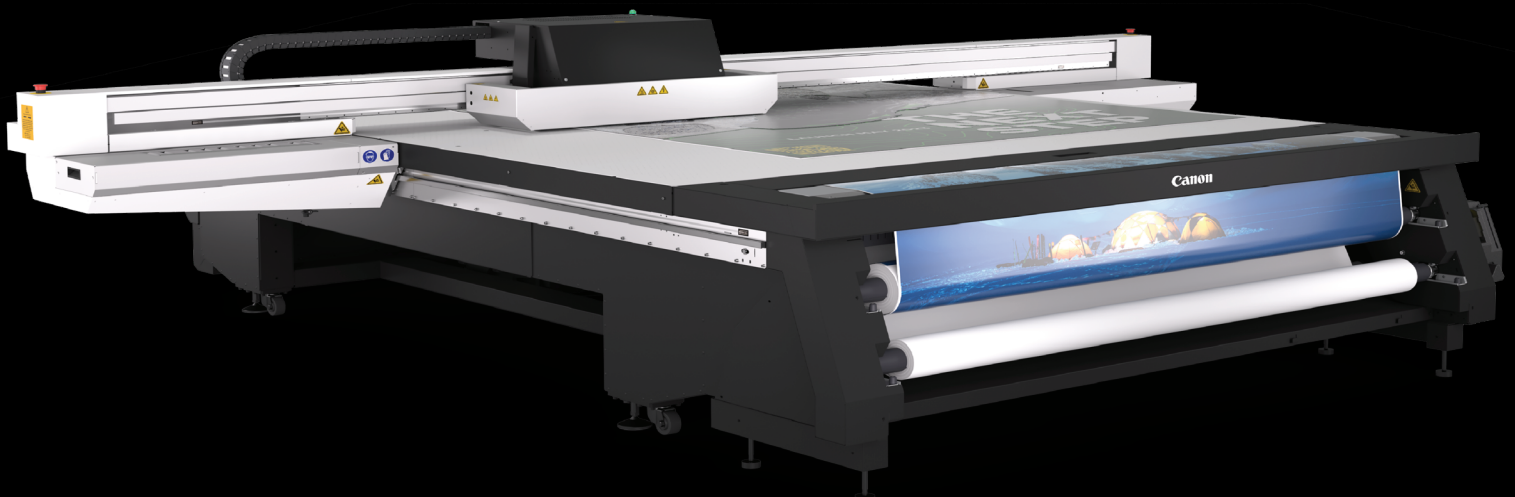
- Available as a factory order or field-upgrade on Arizona 135 GT, 1300 and 2300 series.
- Supports flexible roll media up to 2.2m (or 86.6 inches) wide
- Proven reliability for unattended overnight operation

Independent rigid and roll systems

- Print on roll media while preparing your next rigid media job – no need to stop to change modes
- Compact roll media handling reduces overall footprint and reduces roll media waste

Four, five, six, seven or eight independent ink channels (model dependent)

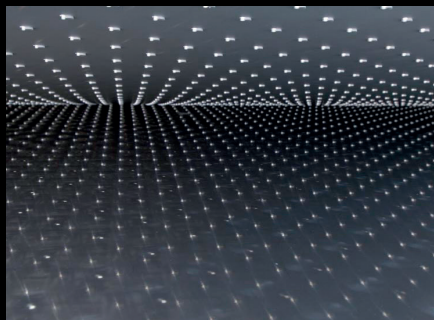
- Use white ink to print on coloured media, create Backlit, Day-Night and Opaque applications
- Print varnish applications with spot and flood gloss effects
- Utilize Light Cyan and Light Magenta for even higher quality photo and fine art applications





Safety features

- Shuttered lamp area protects the operator and printheads from excessive UV exposure
- Carriage guard protects the printer from media collisions by stopping motion if interrupted



Easy operation

- Single-phase electrical power (model dependent)
- Reprint a job with just one click
- Batch mode for efficient production of complex multilayer jobs
- Pneumatic driven self-retracting media registration pins (model dependent)
- Advanced operator functions to adjust print settings at the printer

True flatbed

- Support for rigid media or objects up to 50.8 mm (2 inches) thick
- Edge-to-edge (full bleed) printing
- Easy, precise double-sided printing
- The 6 or 7 zone vacuum system holds the media in place with far less masking and taping being required

Bulk ink system

- Inks in quick-release bags
- Easy replacement on-the-fly
- Temperature-regulated system maintains consistent ink viscosity
- Low-ink warning system
- GREENGUARD Gold certified inks



ENDLESS PRODUCTION POSSIBILITIES

The Arizona series opens the door to a world of specialized applications that can command premium prices. Unlike conventional rigid capable printers that use friction or belt feed systems, the Arizona series can print on just about anything. That means irregular shaped or non-square items, heavy substrates and materials that have an uneven surface, such as wood. They are also perfect for complex technical or industrial printing applications where accurate, repeatable print geometry is critical.

Perfect registration

Align media in perfect registration using the pneumatic, self-retracting media registration pins (model dependent). A vacuum system holds rigid media stationary on the printer's flat table surface, ensuring perfect registration even on multiple imaging passes or double-sided printing applications. Print edge-to-edge (full bleed) to save time and labor cost in finishing. A time-saving batch mode is provided in certain models for the efficient production of complex, multilayer jobs.



“

THE LATEST ARIZONA SERIES PRINTERS ENABLE EXCITING NEW APPLICATIONS USING FEATURES SUCH AS INSTANT-ON LED LAMP TECHNOLOGY, ELEVATED PRINTING AND JOB-AUTOMATION SOFTWARE TO UNLEASH YOUR CUSTOMERS CREATIVITY.

”

Flexible media printing

With the Roll Media Option (available on the Arizona 135 GT, 1300 and 2300 series) you can print on a wide range of flexible media without compromising the rigid printing workflow in any way. These include banners, textiles, films, self-adhesive vinyls and various indoor and outdoor papers. And unlike most systems, the two printing areas do not interfere with each other: while printing on the Roll Media Option, the operator can set up the next rigid media job on the flatbed without disrupting the printing process. The Roll Media Option directly increases profitability by enabling unattended overnight printing on flexible media up to 2.2 meters (or 86.6 inches) wide. Using the Roll Media Option, Print Service Providers can print continuously on rigid media during the day and roll media at night, maximizing return on investment and minimizing the lead time of critical orders.

Six or eight independent channels

The Arizona 1300 and 2300 series introduce new levels of versatility. Six or eight independent ink channels allow varnish applications for spot and flood gloss effects, as well as White and even double-opacity White ink if varnish is not required. White ink enables printing on non-white media or objects (under-printing), creating backlit applications and using White as a spot colour. It allows you to simultaneously print white between layers of colour for a Day-Night image that can be backlit or not, depending on the time of day. Six or eight ink channels means that optional support for 6-colour printing using Light Cyan and Light Magenta for even better print quality for photographic or fine art applications, is available.

Extra productivity

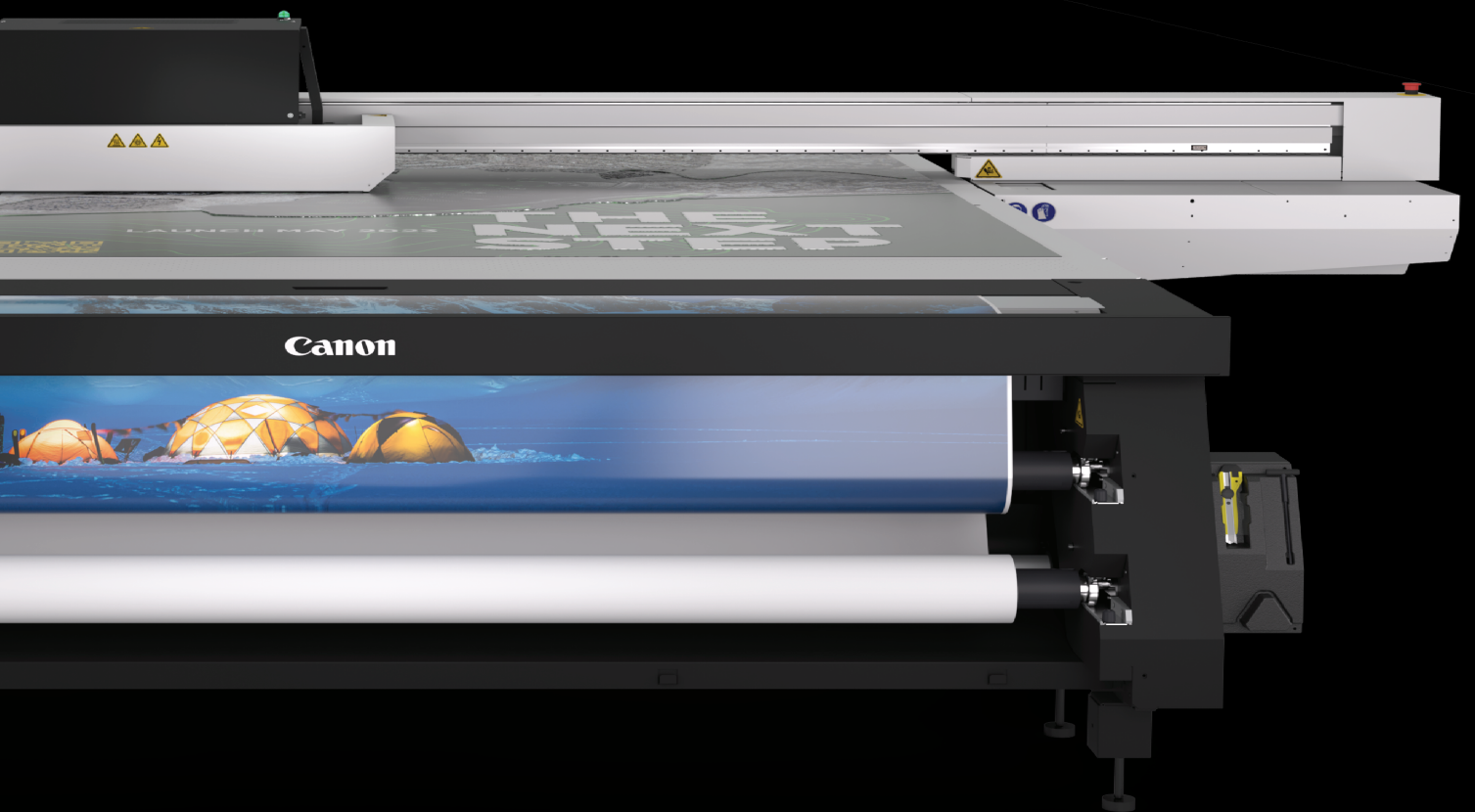
The extra width of the Arizona XT models enables usage of continuous imaging modes for rigid media up to 1.25 by 2.5 meters (or 49.2 by 98.4 inches), or a standard 4 by 8-foot board. Two rigid boards of this size can be mounted on separate vacuum areas of the flatbed table. While one board is being printed, the operator can change the other. Since the printer never has to stop printing for a media change, operators can significantly increase their net print production.

Arizona FLOW technology

As an alternative to the successful Arizona Classic flatbed architecture, the Arizona 1300 and 2300 series feature Arizona FLOW technology. The ideal choice for flexible and productive double-sided printing and switching between application types. Less masking and taping is required.



MEET THE ARIZONA FAMILY



	Arizona 135 GT	Arizona 13x0 GTF	Arizona 13x0 XTF	Arizona 23x0 GTF	Arizona 23x0 XTF	Arizona 61x0 XTS Mark II	Arizona 61x0 XTHF Mark II
Applications							
POP displays Posters Signage & banners Wall panels Transit advertising Backlit displays Fine art Special applications and more				●			
Rigid media size							
1.25m x 2.50m (49.2" x 98.4") 2.50m x 3.08m (98.4" x 121.3") <small>Note: 320 cm x N cm permitted w/308 cm vacuum</small>	●	●	-	●	-	-	-
Rigid media thickness							
25.4 mm (1.0")	●	●	●	●	●	●	●
50.8 mm (2.0")	●	●	●	●	●	●	-
VariADot imaging technology							
6 to 30 picolitre droplets 636 nozzles per head				●			
Printhead per colour	1			2		6	
High-Key print speed	-	50.9 m ² /hr - 548 ft ² /hr	52.8 m ² /hr - 568 ft ² /hr	89.0 m ² /hr - 958 ft ² /hr	95.0 m ² /hr - 1,023 ft ² /hr	220.0 m ² /hr - 2,368 ft ² /hr	220.0 m ² /hr - 2,368 ft ² /hr
Express print speed	34.2 m ² /hr - 368 ft ² /hr	34.2 m ² /hr - 368 ft ² /hr	35.3 m ² /hr - 380 ft ² /hr	57.6 m ² /hr - 620 ft ² /hr	64.2 m ² /hr - 691 ft ² /hr	155.0 m ² /hr - 1,668 ft ² /hr	155.0 m ² /hr - 1,668 ft ² /hr
Production print speed	20.8 m ² /hr - 224 ft ² /hr	20.8 m ² /hr - 224 ft ² /hr	21.3 m ² /hr - 229 ft ² /hr	36.7 m ² /hr - 395 ft ² /hr	39.7 m ² /hr - 427 ft ² /hr	100.0 m ² /hr - 1,076 ft ² /hr	100.0 m ² /hr - 1,076 ft ² /hr
Quality print speed	14.6 m ² /hr - 157 ft ² /hr	14.6 m ² /hr - 157 ft ² /hr	15.0 m ² /hr - 161 ft ² /hr	26.0 m ² /hr - 280 ft ² /hr	27.6 m ² /hr - 297 ft ² /hr	72.0 m ² /hr - 775 ft ² /hr	72.0 m ² /hr - 775 ft ² /hr
Table Technology							
Classic FLOW High FLOW	● - -	- ● -	- ● -	- ● -	- ● -	● - -	- - ●
Pneumatic Registration Pins							
Single origin Dual origin Quadruple origin User-definable origins	- - - -	● - - ●	- ● - ●	- ● - -	- - ● -	- ● - -	- ● - -
Automatic Printhead Maintenance System							
Included as standard equipment for hands-free printhead maintenance, restoring nozzle function in seconds				●			
UV curing technology							
LED-UV Low heat UV halide lamp	● -	● -	● -	● -	● -	● -	● -
Printer configurations							
4-ink channels 5-ink channels 6-ink channels 7-ink channels 8-ink channels	- 135 GT - - -	1340 GTF - 1360 GTF - 1380 GTF	1340 XTF - 1360 XTF - 1380 XTF	2340 GTF - 2360 GTF - 2380 GTF	2340 XTF - 2360 XTF - 2380 XTF	- 6160 XTS Mark II 6170 XTS Mark II -	- 6160 XTHF Mark II 6170 XTHF Mark II -
Ink configurations							
CMYK CMYK & W CMYK & WW CMYK & WV CMYK & cm CMYK & cm & W CMYK & cm & WW CMYK & cm & WV	- 135 GT - - - - - -	1340 GTF - 1360 GTF 1360 GTF - - 1380 GTF 1380 GTF	1340 XTF - 1360 XTF 1360 XTF - - 1380 XTF 1380 XTF	2340 GTF - 2360 GTF 2360 GTF - - 2380 GTF 2380 GTF	2340 XTF - 2360 XTF 2360 XTF - - 2380 XTF 2380 XTF	- - - 6160 XTS Mark II 6170 XTS Mark II -	- - - 6160 XTHF Mark II 6170 XTHF Mark II -
Ink types							
IJC357 IJC358 IJC255 IJC261 IJC262	● ● - - -	● ● - - -	● ● - - -	● ● - - -	● ● - - -	- ● ● ● ●	- ● ● ● ●
Ink certification	GREENGUARD Gold						
Field-upgrade of printer configurations							
1-ink channel upgrade 2-ink channel upgrade Kit additional 2 pedals Static Suppression option	- ○ ○ ○	- 1340 / 1360 GTF ○ ○	- 1340 / 1360 XTF ○ ○	- 2340 / 2360 GTF ○ ○	- 2340 / 2360 XTF ○ ○	6160 XTS Mark II - ○ ○	6160 XTHF Mark II - ○ ○
Durability of output	2+ years						
Roll Media Option	○	○	○	○	○	-	-
Elevated printing							
by PRISMAelevate XL by PRISMAguide XL	- ○	○ ○	○ ○	○ ○	○ ○	- ○	- ○
Job-automation							
by PRISMAguide XL PRISMAservice Advanced Image Layout Control (trimming, snap & align)	- - -	● - ●	● - ●	- ● -	- - -	- - -	- - -

● Standard ○ Optional - Not available

Do it smarter



PRISMAelevate XL

PRISMAelevate XL is a sophisticated yet easy-to-use software application that enables you to create tactile print applications and produce outstanding-quality elevated prints up to 2 mm and so enhance and expand your product offering. PRISMAelevate XL is compatible with Arizona 1300 series and 2300 series.

PRISMAguide XL

PRISMAguide XL is a prepress-stage software optimization that saves you time and money by making complex multi-layered jobs easy and predictable, automating the process for future jobs using the same recipe. PRISMAguide XL is compatible with Arizona 135 GT, 1300 series, 2300 series and 6100 Mark II series.

Designed To Work Together

Canon offers the ONYX Workflow Suite to get the most out of an Arizona series flatbed printer. Canon and the Arizona series flatbed printers preferably use the ONYX Thrive workflow solution. ONYX Thrive and ONYX Connect can drive all your current and future printers and connects your production environment to the rest of your company and most importantly, to your customers.

The RIP solution

To prepare files for printing, a RIP or “raster image processor” is a vital part of the flatbed printing workflow. A RIP is powered by Adobe technologies including the Adobe PDF Print Engine and Adobe Normalizer, which maintain fidelity of the creative intent and eliminate late-stage surprises. It can also process the colour information in the file so you can properly colour manage the entire process using an ICC workflow. ONYX Thrive is the preferred RIP solution for the Arizona flatbed printers.



ONYX Thrive

ONYX Thrive workflow software is a scalable print production solution based on Adobe PDF Print Engine technology. ONYX Thrive is a true end-to-end PDF workflow from digital file submission through colour management, printing and cutting. ONYX Thrive software manages the wide format print production workflow process offering you accurate, predictable, high quality printing results, and reducing costly errors. ONYX Thrive offers plug-in options such as ONYX Textile, ONYX Connect, ProCut Prepress to connect to your production and finishing workflow and to your customers.

ONYX Connect

ONYX Connect is an open system that provides a simple developer interface to connect your current business workflow solutions to ONYX production software, without needing to replace existing business workflows with a proprietary or RIP-specific solution. ONYX Thrive can seamlessly integrate with your Enfocus Switch production workflow to automate repetitive tasks and integrate with popular applications from industry leading providers. This is an optional Plug-In module available for ONYX Thrive.

PRISMAservice

Our ongoing commitment to innovation embraces the development of not only outstanding quality products but also advanced service concepts and solutions. PRISMAservice is the ultimate platform for all service activities and provides faster, more efficient and more effective customer support. The central point of entry for all service activities, to maximise the uptime and performance of Canon's production printing devices.

PRISMAservice is the central service knowledge platform integrating a wide range of Canon service tools in one unified portal, consistent and always up-to-date. Also available for servicing partners and self-servicing customers.

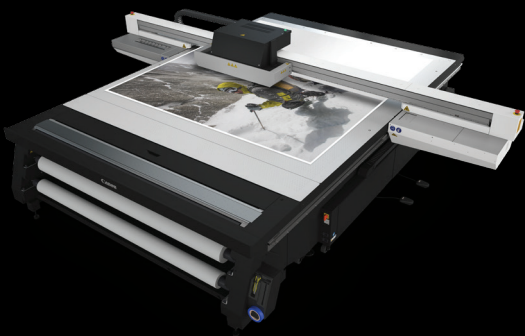




graphiPLAZA

LARGE FORMAT GRAPHICS COMMUNITY

graphiPLAZA is home to Canon Production Printing's Large Format Graphics user community. It keeps users informed of the latest market trends, inspires them with best practices around the world and allows them to discover new applications. You can also search an extensive database of manufacturer-independent media profiles that are compatible with the Arizona printer family. User documentation, technical documentation and firmware and software upgrades are available in a few mouse clicks. You can also order print samples, whitepapers, guides and more. Would you like to discuss with peers about a variety of topics? Join the interactive graphiPLAZA forum.



Unlock new possibilities with Canon

Canon is a world leader in professional imaging. In 2023, we are ranked 5th in the list of most reputable companies, marking a decade in the top-15 rankings. Canon Production Printing has over a century of experience in printing and is one of the main innovation centres of Canon. Our aim is to create a global network of expertise for visual communication and industrial printing.

Together, we are shaping tomorrow

At Canon Large Format Graphics, we believe in the power of the visual world. We share a passion for printing and are dedicated to making sure you stand out.

Imagine what's next, guided by you

We learn first-hand from the people who are changing the world we live in. Supported by your feedback, we work with our partners to develop next-generation technologies and products. Can you dare to imagine what you're going to do next? Let's do it together! Together, we can shape tomorrow: experts working with experts, accelerating innovation.



graphiPLAZA is an online community for Large Format Graphics printers. Come join us!

Scan the QR code to learn more.



© 2023 Canon Production Printing. Canon is a registered trademark of Canon Inc., Arizona is a registered trademark of Canon Production Printing Netherlands B.V., Adobe and Photoshop are either registered trademarks or trademarks of Adobe in the United States and/or other countries. All other trademarks are the property of their respective owners and hereby acknowledged. No part of this publication may be copied, modified, reproduced or transmitted in any form or by any means, electronic, manual, or otherwise, without the prior written permission of Canon Production Printing. Illustrations and printer output images are simulated and do not necessarily apply to products and services offered in each local market. The content of this publication should neither be construed as any guarantee or warranty with regard to specific properties or specifications nor of technical performance or suitability for particular applications. The content of this publication may be subject to changes from time to time without notice. Canon Production Printing shall not be liable for any direct,

Canon

Canon Europe
 canon-europe.com
 English edition